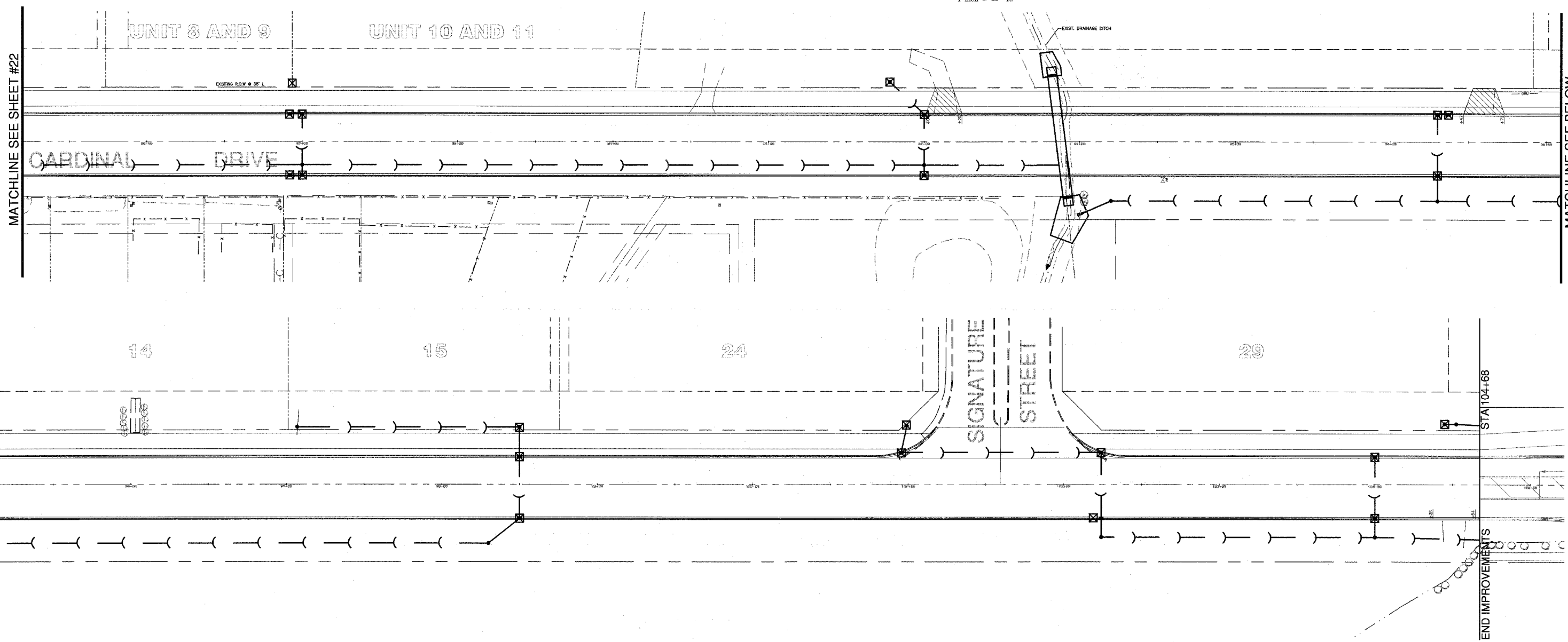
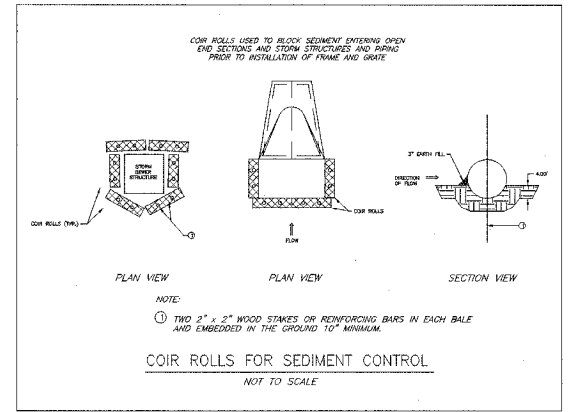
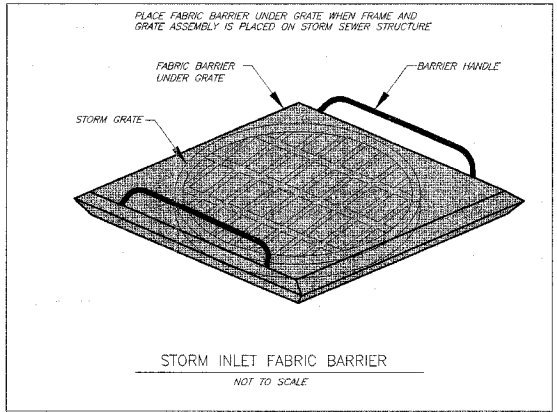


| | | | | |
|--------------|----------------|---------------------|--------------|-----------|
| F.A.U. RTE. | SECTION | COUNTY | TOTAL SHEETS | SHEET NO. |
| 6208 | 07-00093-00-RP | KANKAKEE | 43 | 23 |
| MG2A# M2-096 | | CONTRACT NO.: 87342 | | |



- TEMPORARY EROSION CONTROL NOTES:
1. EROSION AND SEDIMENT CONTROL MEASURES SHALL BE IN ACCORDANCE WITH ILLINOIS URBAN MANUAL AND THE VILLAGE DESIGN STANDARDS.
 2. INLET AND PIPE PROTECTION SHALL BE INSTALLED IMMEDIATELY AFTER DITCH EXCAVATION AND STORM SEWER CONSTRUCTION. CONTRACTOR SHALL PLACE FILTER FABRIC UNDER LID OF ALL PROPOSED DRAINAGE STRUCTURES LOCATED WITHIN PAVEMENT AREAS.
 3. RUNOFF FROM EXCAVATED AREAS SHALL LEAVE THE SITE THROUGH SEDIMENT CONTROL DEVICES. THE CONTRACTOR SHALL ADJUST HIS OPERATION AND IMPLEMENT EROSION CONTROL MEASURES ACCORDINGLY.
 4. THE CONTRACTOR SHALL SEED ALL DISTURBED AREAS AS SOON AS PRACTICAL AFTER CONSTRUCTION ACTIVITIES IN THAT AREA HAVE BEEN CONCLUDED. AREAS THAT HAVE STEEP SLOPES OR WILL NOT RECEIVE PERMANENT LANDSCAPING SHALL BE TEMPORARILY SEEDED.



LEGEND

- ☒ - STORM INLET PROTECTION
- ⌋ - COIR ROLL

M. GINGERICH, GEREUX & ASSOCIATES

| REVISIONS | | |
|-----------|---------|-----------------|
| DATE | BY | DESCRIPTION |
| 2/11/08 | AJC/JWP | PER IDOT REVIEW |
| 3/27/08 | JWP | PER IDOT REVIEW |
| 4/1/08 | JWP | PER REVIEWS |

ILLINOIS DEPARTMENT OF TRANSPORTATION
STORMWATER POLLUTION PREVENTION PLAN SHEET
CARDINAL DRIVE
STA 85+20 TO STA 104+68
SCALE: 1" = 30'
DRAWN BY: MJO/AJC
DATE: 1/4/08
CHECKED BY: JWP