

ROUTE NO.	SECTION	COUNTY	TOTAL SHEETS	SHEET NO.
F.A.S. 321	05-00205-02-RS	IROQUOIS	76	1
FED. ROAD DIST. NO.		ILLINOIS	CONTRACT NO. 87363	

STATE OF ILLINOIS DEPARTMENT OF TRANSPORTATION DIVISION OF HIGHWAYS PLANS FOR PROPOSED SURFACE TRANSPORTATION PROGRAM – RURAL

INDEX OF SHEETS

1. COVER SHEET
2. GENERAL NOTES AND MIXTURE REQUIREMENTS
3. SUMMARY OF QUANTITIES
- 4.-5. SCHEDULE OF QUANTITIES
- 6.-8. TYPICAL SECTIONS
- 9.-22. PLAN AND PROFILE
23. ENTRANCE DETAILS
24. I-57 RAMP DETAILS
- 25.-26. PAVEMENT MARKINGS
- 27.-76. STATION CROSS SECTIONS

HIGHWAY STANDARDS

- 000001-05 STANDARD SYMBOLS, ABBREVIATIONS, AND PATTERNS
- 630001-07 STEEL PLATE BEAM GUARDRAIL
- 635006-02 REFLECTOR AND TERMINAL MARKER PLACEMENT
- 635011-01 REFLECTOR MARKER AND MOUNTING DETAILS
- 667101 PERMANENT SURVEY MARKERS
- 701301-02 LANE CLOSURE, 2L, 2W, SHORT TIME OPERATIONS
- 701306-01 LANE CLOSURE, 2L, 2W, SLOW MOVING OPERATIONS - DAY ONLY FOR SPEEDS ≥ 45 MPH
- 701311-02 LANE CLOSURE, 2L, 2W, MOVING OPERATIONS-DAY ONLY
- 701901 TRAFFIC CONTROL DEVICES
- 780001-01 TYPICAL PAVEMENT MARKINGS
- BLR 24-1 MAILBOX TURNOUT FOR LOCAL ROADS

UTILITIES

NICOR GAS
1844 FERRY ROAD
NAPERVILLE, IL 60563-9600
ATTN: CONSTANCE LANE (630)388-3830

VERIZON NORTH
KALIN HINSHAW
110E MONROE
BLOOMINGTO, IL 61701-2675
(MAIL CODE) ILLLBON

EASTERN ILLINI ELECTRIC
330 W OTTAWA ST
P.O. BOX 96
PAXTON, IL 60957
ATTN ALAN SCHWEIGHART 217-379-2131-17

COMCAST
688 INDUSTRIAL DRIVE
ELMHURST, IL 60015
ATTN MARTHA GIERAS 630-600-6352

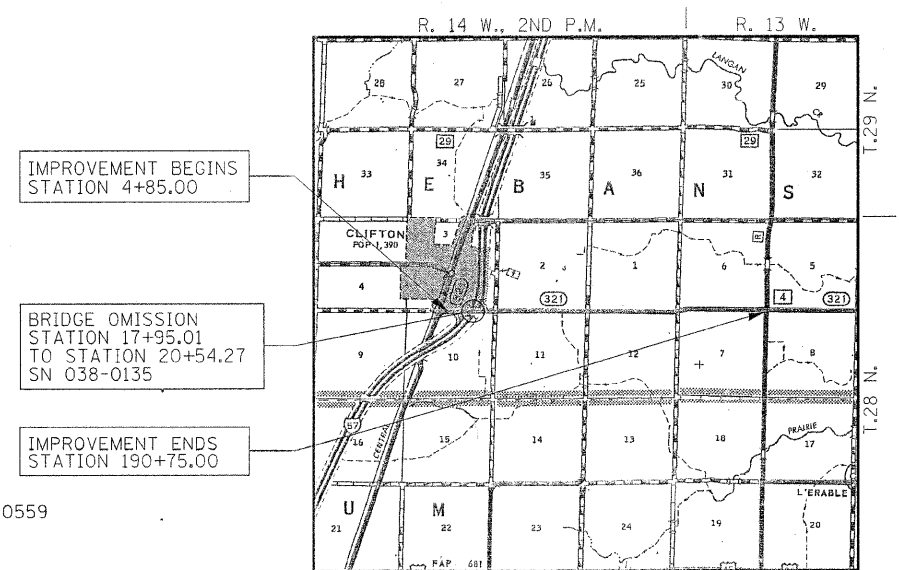
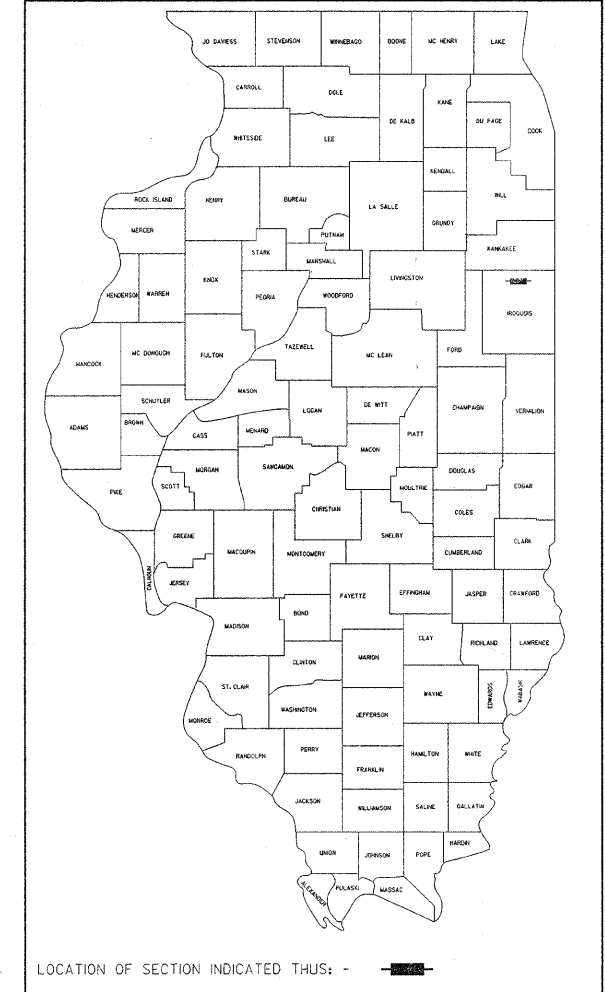
AMEREN CIPS
P.O. BOX 566
711 S 9TH STREET
MATON, IL 61938
ATTN MIKE TIPTON 217-234-0559

MCLEOD USA
102 E SHAFER
FORSYTH, IL 62535
ATTN MARK MILLS 217-876-7194

SCALES

PLAN	0' = 1" = 50'
PROFILE HORIZ.	0' = 1" = 50'
PROFILE VERT.	0' = 1" = 5'
CROSS SECTIONS	0' = 1" = 5'

F.A.S. 321 E 2900 NORTH ROAD (C.H. 4) SECTION 05-00205-02-RS IROQUOIS COUNTY PROJECT – RS-321(115) C-93-046-08



APPROVED May 16, 2008
COUNTY ENGINEER

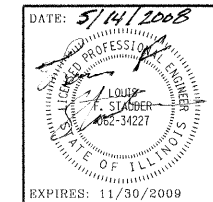
PASSED 05/19 2008
DISTRICT THREE ENGINEER OF LOCAL ROADS & STREETS

Releasing For Bid Based on Limited Review 05/19 2008
DEPUTY DIRECTOR OF HIGHWAYS REGION TWO ENGINEER
STATE OF ILLINOIS DEPARTMENT OF TRANSPORTATION

DESIGN FUNCTIONAL CLASSIFICATION: MAJOR COLLECTOR (NON-URBAN)
DESIGN TRAFFIC: 3300 (2002) 5133 (2028) ADT
 1200 (2002) 1866 (2028) ADT
DESIGN SPEED: 50 M.P.H. 50 M.P.H.
CONTRACT NO. 87363

LAYOUT
APPROXIMATE SCALE: 0 1 MILE

GROSS NET LENGTH OF SECTION = 18590.00 FEET = 3.521 MILES
BRIDGE OMISSION = 259.24 FEET = 0.049 MILES
NET LENGTH OF SECTION = 18330.74 FEET = 3.472 MILES



HAMPTON, LENZINI & RENWICK, INC.
CIVIL & STRUCTURAL ENGINEERS
LAND SURVEYORS

3085 STEVENSON DRIVE, SUITE 201
SPRINGFIELD, ILLINOIS 62703
(217) 548-3400

ELGIN • SPRINGFIELD

PROJECT NUMBER: 07 0120.320 DATE: 05/06/08