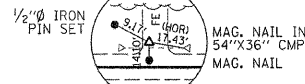
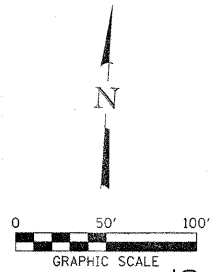


SEC 6, T. 28 N., R. 13 W., 2ND P.M.



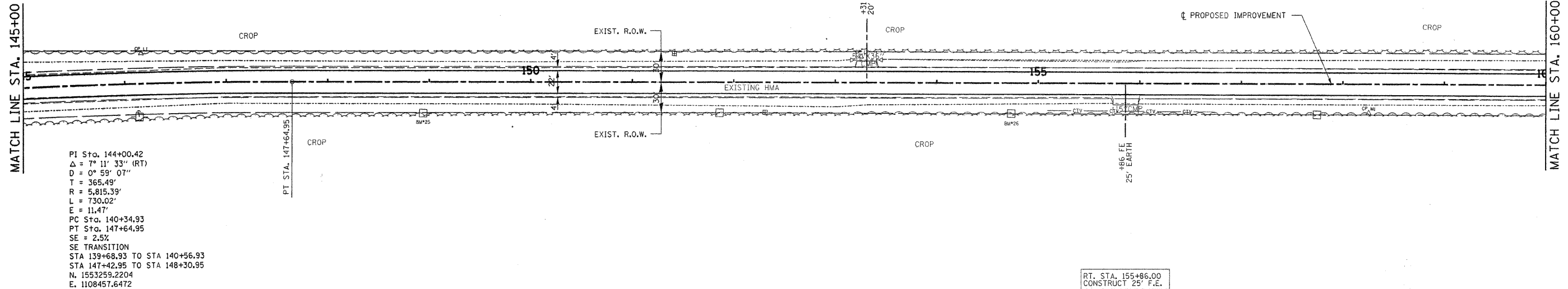
CP L  
25.10' LT. STA. 153+25.35  
1/2" Ø IRON PIN (SET)  
N. 1553311.0123  
E. 1109382.4308

LT. STA. 153+31.00  
CONSTRUCT 20' F.E.



DATE	BY
SURVEYED	ALIGNED
GRADES CHECKED	NOTED
NOTE BOOK NO.	FILE NAME

MATCH LINE STA. 145+00

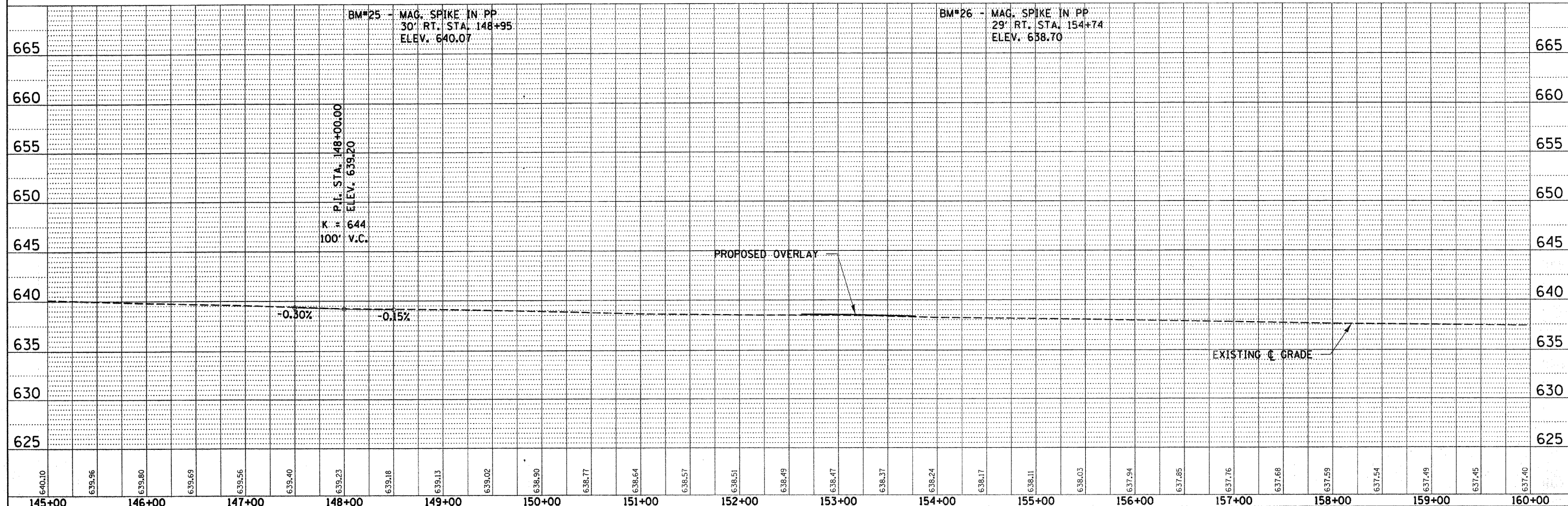


PI Sta. 144+00.42  
Δ = 7° 11' 33" (RT)  
D = 0° 59' 07"  
T = 365.49'  
R = 5,815.39'  
L = 730.02'  
E = 11.47'  
PC Sta. 140+34.93  
PT Sta. 147+64.95  
SE = 2.5%  
SE TRANSITION  
STA 139+68.93 TO STA 140+56.93  
STA 147+42.95 TO STA 148+30.95  
N. 1553259.2204  
E. 1108457.6472

RT. STA. 155+86.00  
CONSTRUCT 25' F.E.

SEC 7, T. 28 N., R. 13 W., 2ND P.M.

DATE	BY
SURVEYED	GRADES CHECKED
NOTE BOOK NO.	FILE NAME



640.10	639.96	639.80	639.69	639.56	639.40	639.23	639.18	639.13	639.02	638.90	638.77	638.64	638.57	638.51	638.49	638.47	638.37	638.24	638.17	638.11	638.03	637.94	637.85	637.76	637.68	637.59	637.54	637.49	637.45	637.40
145+00	146+00	147+00	148+00	149+00	150+00	151+00	152+00	153+00	154+00	155+00	156+00	157+00	158+00	159+00	160+00															

FILE NAME = 46002-ah-rp11.dgn  
USER NAME =  
DESIGNED -  
DRAWN -  
PLOT SCALE =  
PLOT DATE = 5/13/2008

REVISOR -  
CHECKED -  
DATE -

STATE OF ILLINOIS  
DEPARTMENT OF TRANSPORTATION

HAMPTON, LENZINI & RENWICK, INC.  
CIVIL & STRUCTURAL ENGINEERS  
LAND SURVEYORS

PLAN & PROFILE  
F.A.S. 321 / CH 4

F.A.S.	SECTION	COUNTY	TOTAL SHEETS	SHEET NO.
321	05-00205-02-RS	IROQUOIS	76	19
FED. ROAD DIST. NO.		ILLINOIS FED. AID PROJECT		

SCALE: SHEET NO. OF SHEETS STA. 145+00.00 TO STA. 160+00.00 CONTRACT NO. 87363