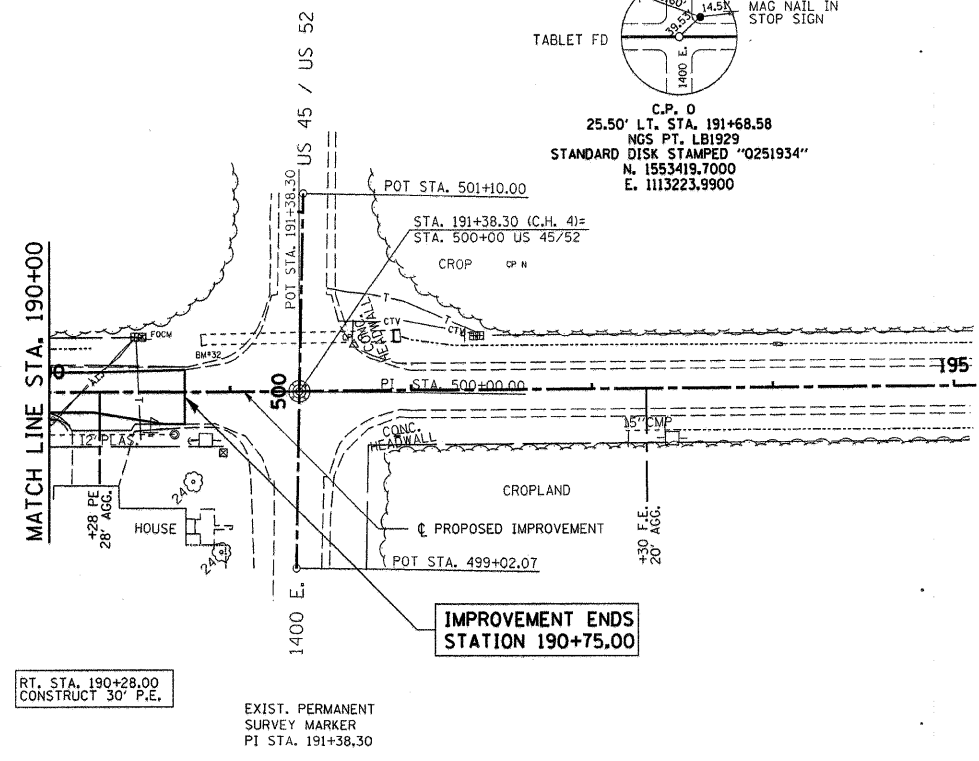
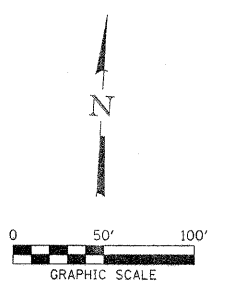
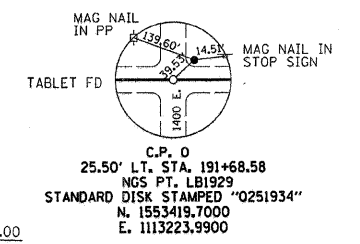


SEC 6, T. 28 N.,
R. 13 W., 2ND P.M.

SEC 5, T. 28 N., R. 13 W., 2ND P.M.



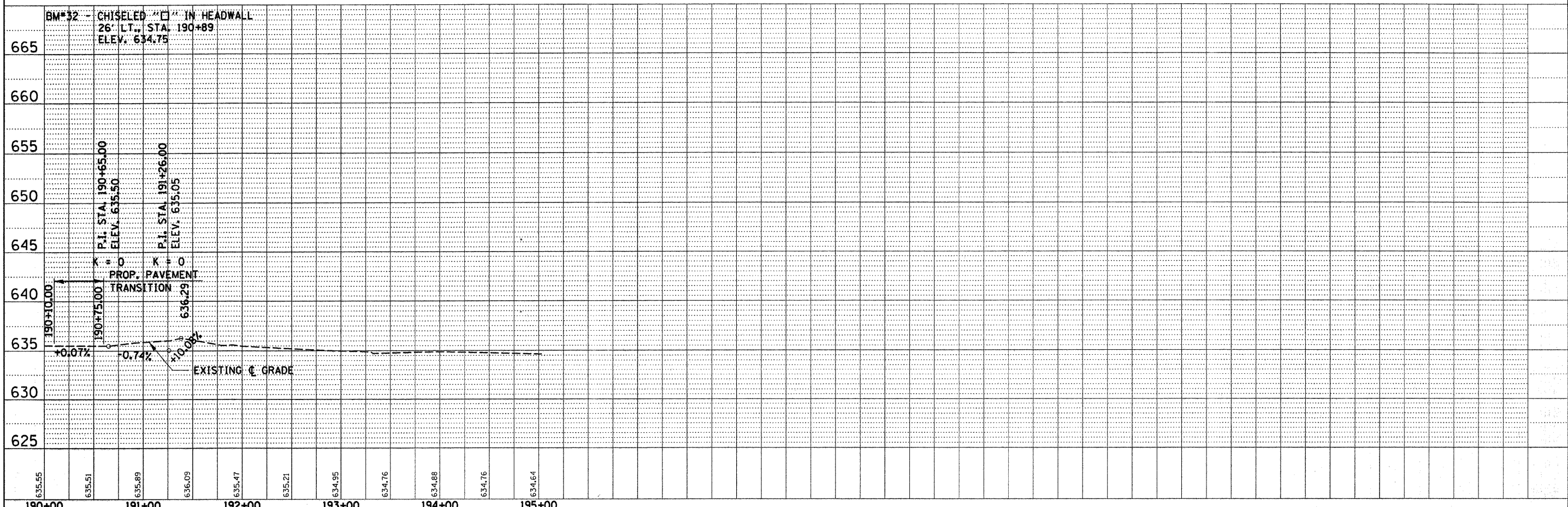
RT. STA. 190+28.00
CONSTRUCT 30' P.E.

SEC 7, T. 28 N.,
R. 13 W., 2ND P.M.

SEC 8, T. 28 N., R. 13 W., 2ND P.M.

DATE	
BY	
REVIEWED	
ALIGNMENT CHECKED	
NOTE BOOK NO.	
FILE NAME	

DATE	
BY	
REVIEWED	
GRADES CHECKED	
NOTE BOOK NO.	
PROFILE NOTATION CHFD	



190+00	191+00	192+00	193+00	194+00	195+00
635.55	635.51	635.89	636.09	635.47	635.21
634.95	634.76	634.88	634.76	634.64	

FILE NAME =	USER NAME =	DESIGNED -	REVISED -
46002-sht-pp14.dgn		DRAWN -	REVISED -
PLOT SCALE =		CHECKED -	REVISED -
PLOT DATE = 5/13/2008		DATE -	REVISED -

STATE OF ILLINOIS
DEPARTMENT OF TRANSPORTATION

HLR HAMPTON, LENZINI & RENWICK, INC.
CIVIL & STRUCTURAL ENGINEERS
LAND SURVEYORS

PLAN & PROFILE
F.A.S. 321 / CH 4

F.A.S.	SECTION	COUNTY	TOTAL SHEETS	SHEET NO.
321	05-00205-02-RS	ILLINOIS	76	22
CONTRACT NO. 87363				
SCALE:	SHEET NO.	OF	SHEETS	STA. 190+00.00 TO STA. 190+75.00
FED. ROAD DIST. NO. ILLINOIS FED. AID PROJECT				