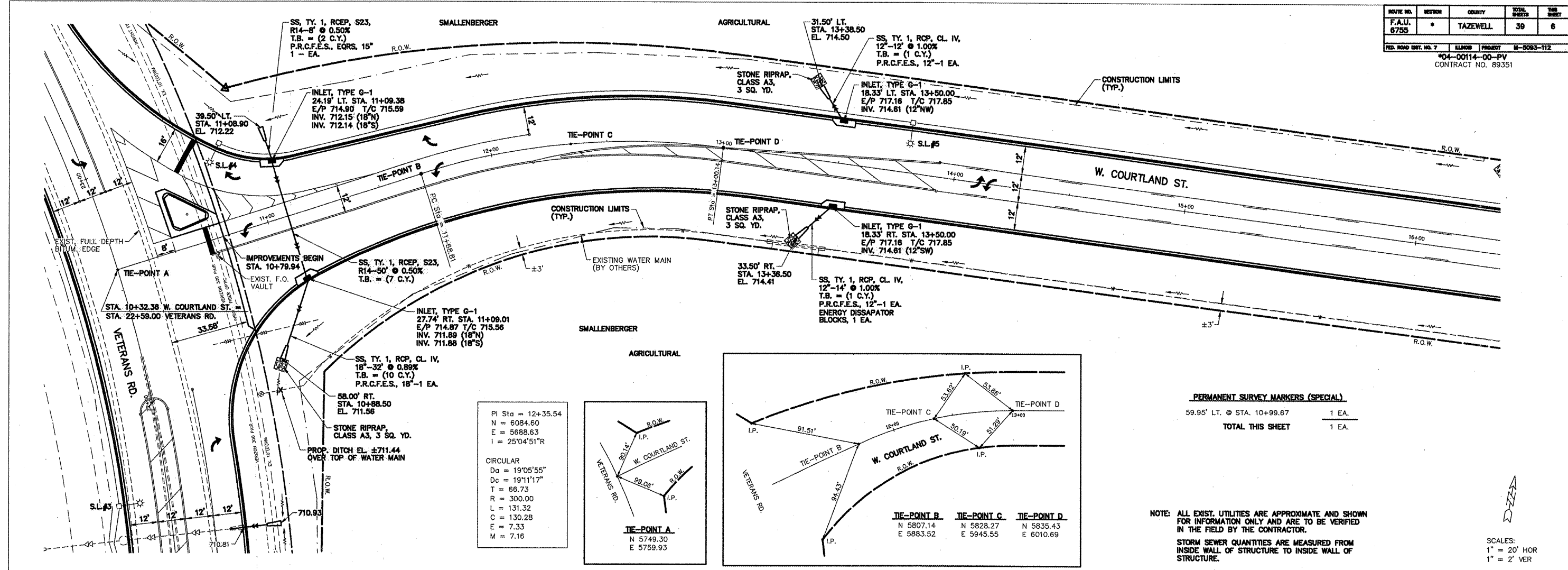
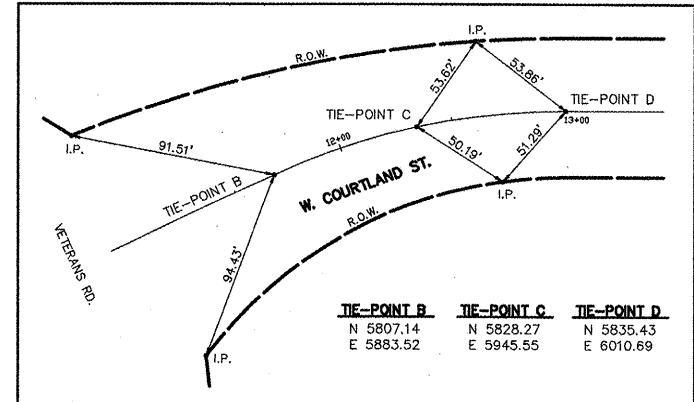
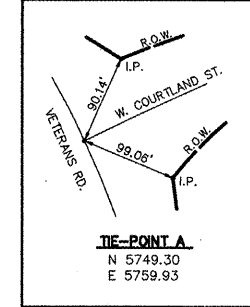


PROJECT NO.	SHEET	COUNTY	TOTAL SHEETS	TITLE SHEET
F.A.U. 6755	*	TAZEWELL	39	6
FED. ROAD DIST. NO. 7	ILLINOIS	PROJECT	N-5063-112	
*04-00114-00-PV				
CONTRACT NO. 89351				



PI Sta = 12+35.54
 N = 6084.60
 E = 5688.63
 I = 25°04'51"R

CIRCULAR
 Da = 19°05'55"
 Dc = 19°11'17"
 T = 66.73
 R = 300.00
 L = 131.32
 C = 130.28
 E = 7.33
 M = 7.16



PERMANENT SURVEY MARKERS (SPECIAL)

59.95' LT. @ STA. 10+99.67	1 EA.
TOTAL THIS SHEET	1 EA.

NOTE: ALL EXIST. UTILITIES ARE APPROXIMATE AND SHOWN FOR INFORMATION ONLY AND ARE TO BE VERIFIED IN THE FIELD BY THE CONTRACTOR.

STORM SEWER QUANTITIES ARE MEASURED FROM INSIDE WALL OF STRUCTURE TO INSIDE WALL OF STRUCTURE.

SCALES:
 1" = 20' HOR
 1" = 2' VER

