

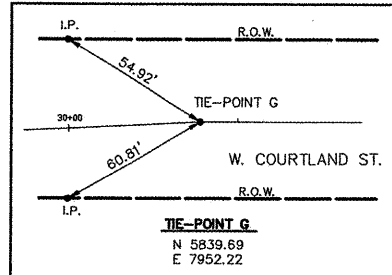
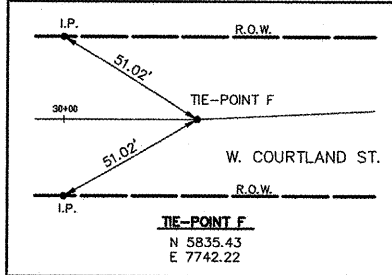
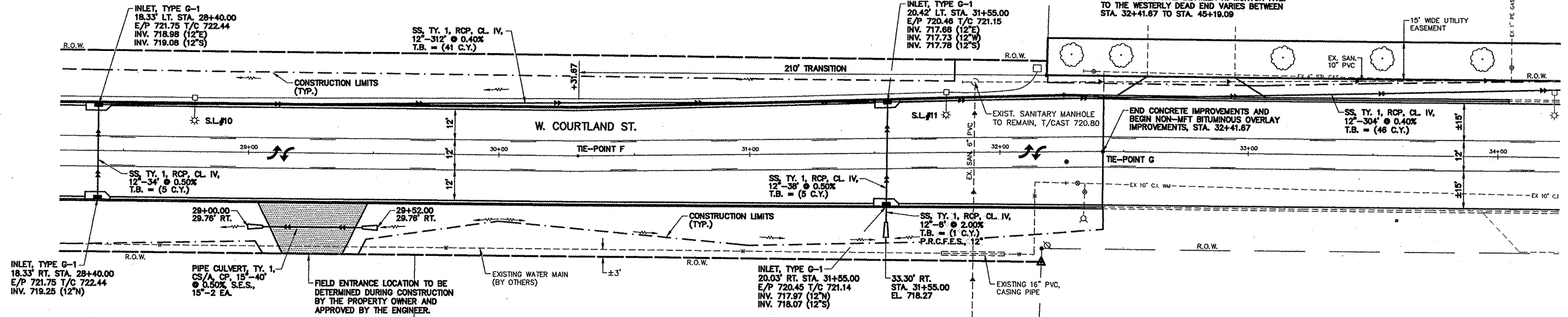
NOTE: ALL EXIST. UTILITIES ARE APPROXIMATE AND SHOWN FOR INFORMATION ONLY AND ARE TO BE VERIFIED IN THE FIELD BY THE CONTRACTOR.

STORM SEWER QUANTITIES ARE MEASURED FROM INSIDE WALL OF STRUCTURE TO INSIDE WALL OF STRUCTURE.

ROUTE NO.	SECTION	COUNTY	TOTAL SHEETS	THIS SHEET
F.A.U. 6755	*	TAZEWELL	39	9

FED. ROAD DIST. NO. 7 ILLINOIS PROJECT M-5063-112
 *04-00114-00-PV
 CONTRACT NO. 89351

THE APPROXIMATE CENTERLINE OF EXISTING W. COURTLAND AVE. BETWEEN N. MORTON AVE. TO THE WESTERLY DEAD END VARIES BETWEEN STA. 32+41.67 TO STA. 45+18.09



PERMANENT SURVEY MARKERS (SPECIAL)

43.75' RT. @ STA. 32+16.10	1 EA.
TOTAL THIS SHEET	1 EA.

P.C.C. DRIVEWAY PAVEMENT, 8"

LOCATION	QUANTITY
LT. STA. 32+78	50 S.Y.
PROJECT TOTAL	50 S.Y.

SCALES:
 1" = 20' HOR
 1" = 2' VER

