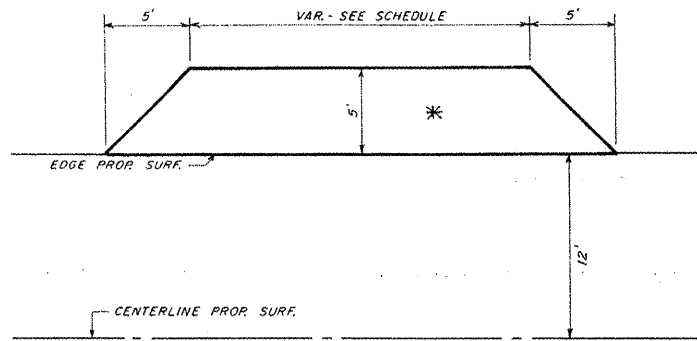


**ENTRANCE DETAIL**  
SCALE: 1" = 5'



**SCHEDULE OF ENTRANCES**

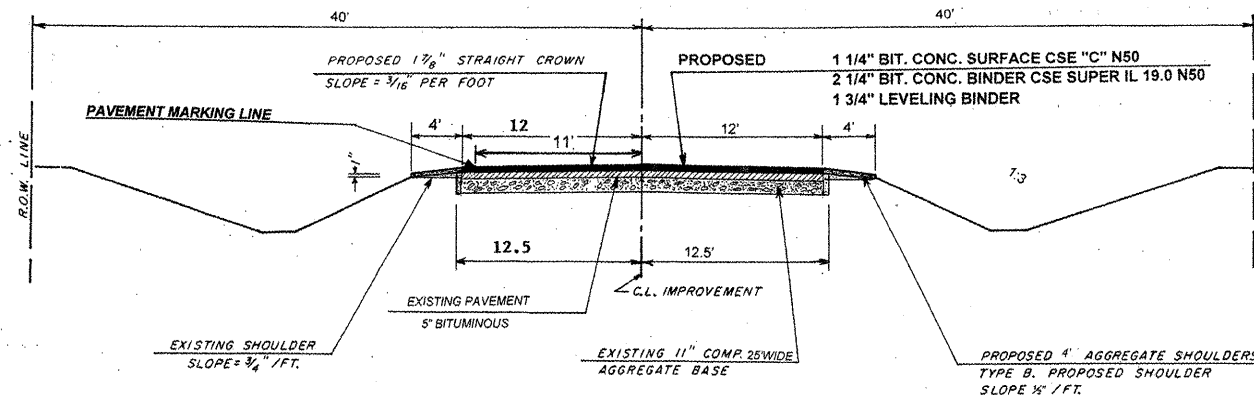
STATION	WIDTH	SQ YDS	TONS MIXT. REQUIRED
LT 16+75	22'	15.0	4.2
RT 22+10	22'	15.0	4.2
LT 24+40	22'	15.0	4.2
RT 43+60	22'	15.0	4.2
LT 43+70	22'	15.0	4.2
RT 55+60	22'	15.0	4.2
LT 55+85	22'	15.0	4.2
		105.0	29.4
		SQ YD	TON

\*CONSISTS OF 5" BITUMINOUS CONCRETE SURFACE COURSE, SUPERPAVE MIX "C" N50

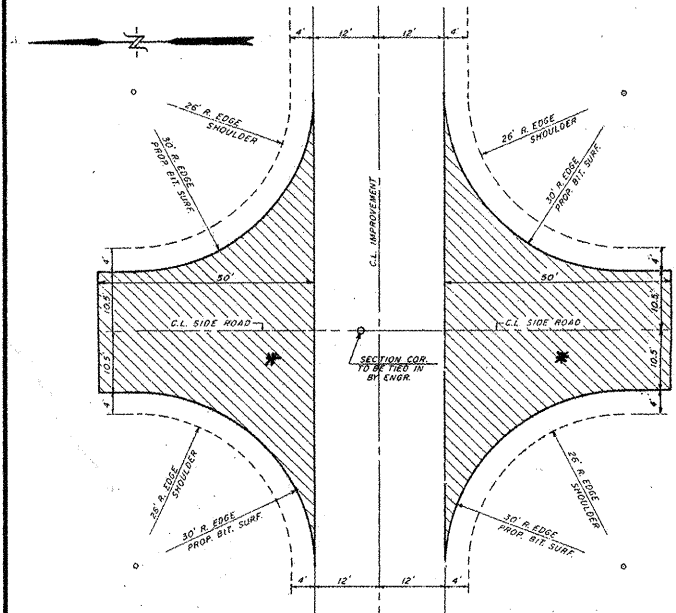
FAS ROUTE NO.	COUNTY	SECTION	CONTRACT	CO. HWY. NO.	SHEET NO.	TOTAL SHEETS
368	MARSHALL	06-00082-00-RS	89442	4	3	3

**TYPICAL CROSS SECTION**

THE THICKNESS OF BITUMINOUS MIXTURE SHOWN ON THE PLANS IS THE NOMINAL THICKNESS. DEVIATION FROM THE NOMINAL THICKNESS WILL BE PERMITTED WHEN SUCH DEVIATIONS OCCUR DUE TO IRREGULARITIES IN THE EXISTING SURFACE OR BASE ON WHICH THE BITUMINOUS MIXTURE IS PLACED.



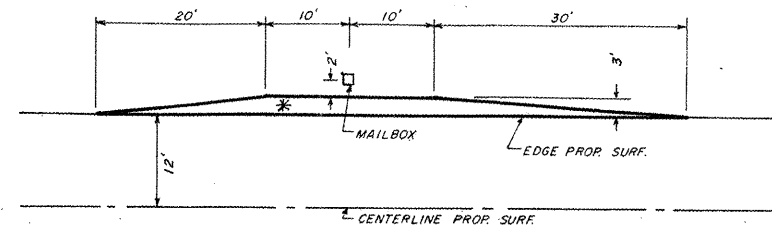
**INTERSECTIONAL DETAIL**  
STA. 3+35



Total Area LT.	159.7 SQ YDS
Total Area RT.	159.7 SQ YDS
Thickness Required	5" COMP
Incidental Hot-Mix Asphalt Surfacing Required LT.	44.7 TON
Incidental Hot-Mix Asphalt Surfacing Required RT.	44.7 TON
Hot-Mix Asphalt Surface Removal Butt Joint LT. & RT.	122.2 SQ YDS

\*CONSISTS OF 5" BITUMINOUS CONCRETE SURFACE COURSE, SUPERPAVE MIX "C" N50

**MAILBOX TURNOUT DETAIL**  
SCALE: 1" = 10'

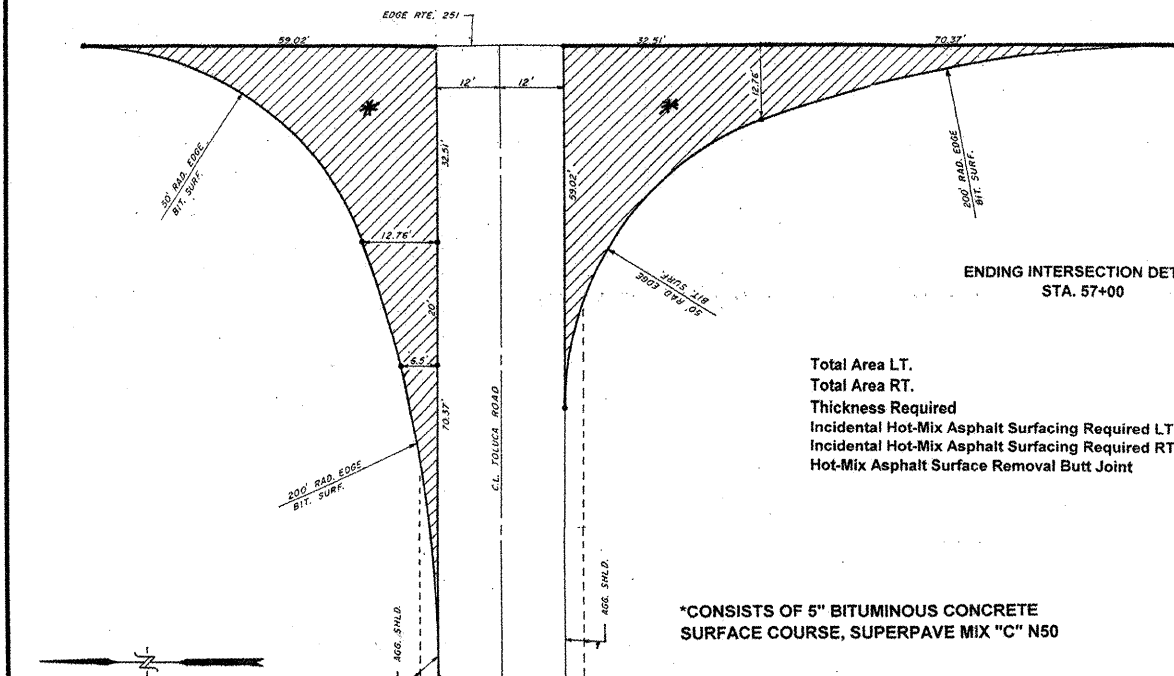


**MAILBOX TURNOUTS**

STATION	SQ YDS	TONS MIXT. REQUIRED
LT 16+50	15.0	4.2
LT 43+40	15.0	4.2
	30.0	8.4
	SQ YD	TON

\*CONSISTS OF 5" BITUMINOUS CONCRETE SURFACE COURSE, SUPERPAVE MIX "C" N50

**ENDING INTERSECTION DETAIL**  
STA. 57+00



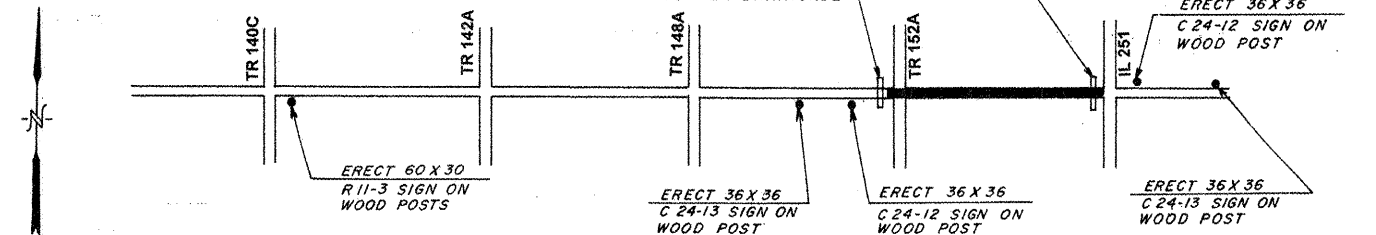
Total Area LT.	126.0 SQ YDS
Total Area RT.	127.0 SQ YDS
Thickness Required	5" COMPL.
Incidental Hot-Mix Asphalt Surfacing Required LT.	35.3 TON
Incidental Hot-Mix Asphalt Surfacing Required RT.	35.6 TON
Hot-Mix Asphalt Surface Removal Butt Joint	166.6 SQ YDS

\*CONSISTS OF 5" BITUMINOUS CONCRETE SURFACE COURSE, SUPERPAVE MIX "C" N50

**LOCATION MAP SHOWING REQUIRED BARRICADE AND SIGN PLACEMENTS**

**SIGN LEGEND**

- C24-12 ROAD CLOSED 500 FT.
- C24-13 ROAD CLOSED 1000 FT.
- R11-4 ROAD CLOSED TO THRU TRAFFIC (WHITE)
- R11-3 ROAD, CLOSED 3 MILES AHEAD (WHITE)



NOTE: REFER TO STANDARD 701901 FOR ERECTION OF SIGNS AND PLACEMENT OF TYPE III BARRICADES. TYPE A LOW INTENSITY LIGHTS ARE REQUIRED ABOVE THE FIRST TWO WARNING SIGNS FROM EACH DIRECTION AS PER STANDARD BLR 22-5