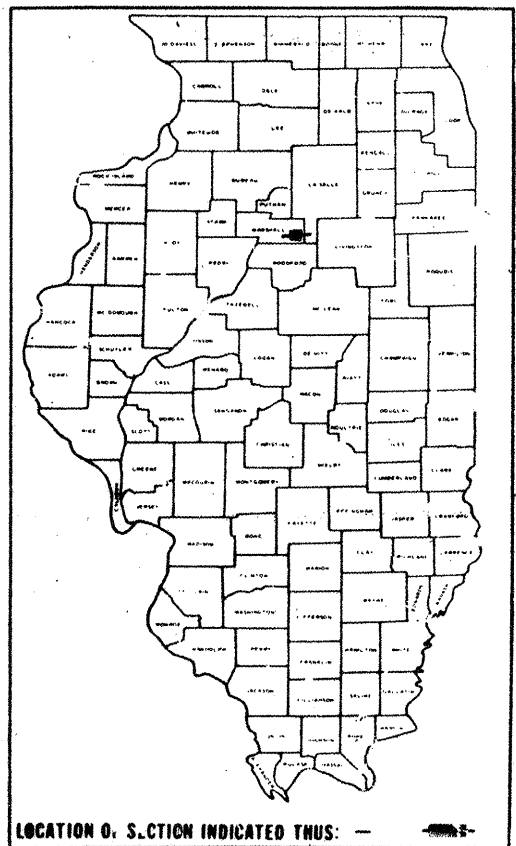


FAS ROUTE NO.	COUNTY	SECTION	CONTRACT	CO. HWY. NO.	SHEET NO.	TOTAL SHEETS
368	MARSHALL	06-00082-00-RS	89442	4	1	3

**STATE OF ILLINOIS  
DEPARTMENT OF TRANSPORTATION  
DIVISION OF HIGHWAYS  
PLANS FOR PROPOSED FEDERAL AID  
SECONDARY  
FEDERAL AID SECONDARY 368 (C.H. 4)**

**SECTION 06-00082-00-RS  
PROJECT RS-0368 (101)  
MARSHALL COUNTY  
JOB #C94-141-06  
CONTRACT #89442**



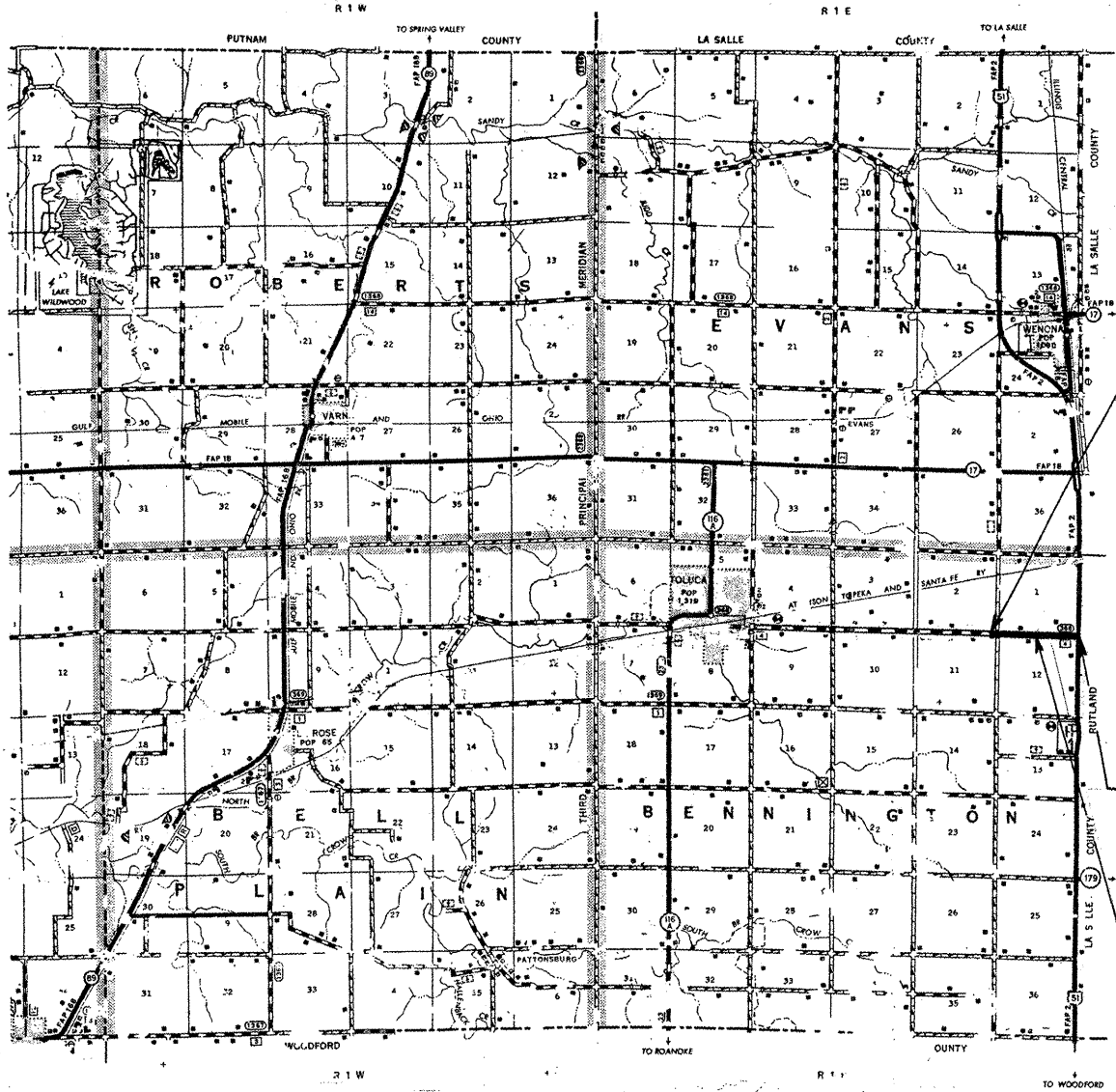
LOCATION OF SECTION INDICATED THUS: —

INDEX OF SHEETS

SHEET NO. 1	COVER SHEET AND SUMMARY OF QUANTITIES
SHEET NO. 2	TABULATION OF QUANTITIES, BUTT JOINT DETAIL
SHEET NO. 3	TYPICAL CROSS SECTION, MAILBOX TURNOUT, ENTRANCE DETAILS, BARRICADE AND SIGN PLACEMENT MAP

STANDARDS:

701306-01	LANE CLOSURE TWO LANE, TWO WAY SLOW MOVING OPERATIONS - DAY ONLY
701311-02	LANE CLOSURE TWO LANE, TWO WAY MOVING OPERATIONS - DAY ONLY
701901	TRAFFIC CONTROL DEVICES
780001-01	TYPICAL PAVEMENT MARKINGS
BLR 22-5	TYPICAL APPLICATION OF TRAFFIC CONTROL DEVICES TWO LANE, TWO WAY, RURAL, OVER ONE DAY



SUMMARY OF QUANTITIES  
CONSTRUCTION CODE 1000

CODE NO.	UNIT	ITEM	QUANTITY
40600100	GALLON	BITUMINOUS MATERIALS (PRIME COAT)	1529.0
40600982	SQ YD	HOT-MIX ASPHALT SURFACE REMOVAL BUTT JOINT	729.0
40800050	TON	INCIDENTAL HOT-MIX ASPHALT SURFACING	184.0
48101200	TON	AGGREGATE SHOULDERS, TYPE B	1484.0
* 78001110	FOOT	PAINT PAVEMENT MARKING-LINE 4"	15055.0
40603310	TON	HOT-MIX ASPHALT SURFACE COURSE MIX "C" N50	1059.0
40603080	TON	HOT-MIX ASPHALT BINDER COURSE IL 19.0 N50	1764.0
40600625	TON	LEVELING BINDER (MACHINE METHOD) N50	1348
67100100	LS	MOBILIZATION	1

\* SPECIALTY ITEM

PROPOSED IMPROVEMENT  
BEGINS STATION 0+00

CLASS III ROAD 20 YEAR DESIGN  
FUNCTIONAL CLASSIFICATION = MAJOR COLLECTOR

CURRENT ADT (2000)	650
(20 year) DESIGN ADT (2026)	840
SDT (2017)	770
P.C. 75%	ADT 576
S.U. 7%	ADT 54
M.U. 18%	ADT 140
T.F. =	0.5934
I.B.R. =	3.0
Dt =	3.88
Provided	4.00

PROPOSED BITUMINOUS RESURFACING:  
1 1/4" SURFACE CSE.  
2 1/4" BINDER CSE.  
1 3/4" LEVEL BINDER CSE.

PROPOSED IMPROVEMENT  
ENDS STATION 57+00

OMISSION - BRIDGE  
STATION 31+10 TO 33+38

GROSS LENGTH OF SECTION 5700.00 FEET = 1.0795 MILES  
NET LENGTH OF SECTION 5472.00 FEET = 1.0363 MILES

PLANS PREPARED BY:  
GEORGE P. MEISTER  
REGISTERED PROFESSIONAL ENGINEER  
*George P. Meister*  
Reg. No. 62-35763  
Exp. Date 11-30-09



J.U.L.I.E. 1-800-892-0123

APPROVED *January 25 2008*  
*George P. Meister*  
REGISTERED PROFESSIONAL ENGINEER  
MARSHALL COUNTY ENGINEER

PASSED *5-30 2008*  
*Dorel C. Parish*  
DISTRICT ENGINEER OF LOCAL ROADS & STREETS

Released For Bid Based on Limited Review  
*June 2 2008*  
*Julius*  
REGIONAL DIRECTOR FOR HIGHWAYS  
REGION THREE ENGINEER  
STATE OF ILLINOIS  
DEPARTMENT OF TRANSPORTATION

FAS ROUTE NO.	COUNTY	SECTION	CONTRACT	CO. HWY. NO.	SHEET NO.	TOTAL SHEETS
368	MARSHALL	06-00082-00-RS	8942	4	2	3

**TABULATION OF QUANTITIES**

**40600100 BITUMINOUS MATERIALS (PRIME COAT)**

LOCATION	WIDTH	QUANTITY REQUIRED
STA. 0+00 TO 57+00 (MAIN LANES)	24'	1459.2 GAL
ENTIRE SECTION (INTERSECTIONS)	VAR	57.0 GAL
ENTIRE SECTION (ENTRANCES/MAILBOX TURNOUTS)	VAR	13.0 GAL
		1529.2 GAL
RATE OF APPL = 0.1 GAL/SQ YD		TOTAL 1529.2 (USE 1529 GAL)

**78001110 PAINT PAVEMENT MARKING 4"**

LOCATION	WIDTH	QUANTITY REQUIRED
STA. 0+00 TO 57+00 (EDGE LINES)	4"	11400.0 FT
STA. 0+00 TO 57+00 (CENTERLINE)	4"	1400.0 FT
ENTIRE SECTION (NO PASSING ZONES)	4"	2255.0 FT
		15055.0 FT
TOTAL		15055.0 (USE 15055 FT)

**40600982 HOT-MIX ASPHALT SURFACE REMOVAL BUTT JOINT**

LOCATION	WIDTH	QUANTITY REQUIRED
STA. 0+00 (MAIN LANES)	22'	146.6 SQ YD
STA. 31+10 (MAIN LANES)	22'	146.6 SQ YD
STA. 33+38 (MAIN LANES)	22'	146.6 SQ YD
STA. 57+00 (MAIN LANES)	150'	166.6 SQ YD
LT STA. 3+35 (INTERSECTION)	22'	61.1 SQ YD
LT STA. 3+35 (INTERSECTION)	22'	61.1 SQ YD
		728.6 SQ YD
TOTAL		728.6 (USE 729 SQ YD)

**40603310 HOT-MIX ASPHALT SURFACE COURSE MIX "C" N50**

LOCATION	WIDTH	QUANTITY REQUIRED
STA. 0+00 TO 31+10 (MAIN LANES) 1 1/4"	24'	580.5 TON
STA. 33+38 TO 57+00 (MAIN LANES) 1 1/4"	24'	440.9 TON
ENTIRE SECTION (ENTRANCES) 5"	VAR.	29.4 TON
ENTIRE SECTION (MAILBOX TURNOUTS) 5"	VAR.	8.4 TON
		1059.2 TON
RATE OF APPL. = 112 LB./S.Y./IN.		TOTAL 1059.2 (USE 1059 TON)

**40603080 HOT-MIX ASPHALT BINDER COURSE IL 19.0 N50**

LOCATION	WIDTH	QUANTITY REQUIRED
STA. 0+60 TO 30+50 (MAIN LANES) 2 1/4"	24'	1004.6 TON
STA. 34+00 TO 56+58 (MAIN LANES) 2 1/4"	24'	758.7 TON
		1763.3 TON
RATE OF APPL. = 112 LB./S.Y./IN.		TOTAL 1763.3 (USE 1764 TON)

**4080050 INCIDENTAL HOT-MIX ASPHALT SURFACING**

LOCATION	WIDTH	QUANTITY REQUIRED
LT STA 2+32 (ENTRANCE) 10' deep	35'	12.4 TON
LT STA 2+87 (ENTRANCE) 10' deep	35'	12.4 TON
LT STA 3+35 (INTERSECTION)	VAR.	44.7 TON
RT STA 3+35 INTERSECTION	VAR.	44.7 TON
LT STA 57+00 (INTERSECTION)	VAR.	35.3 TON
RT STA 57+00 (INTERSECTION)	VAR.	35.6 TON
		185.1 TON
RATE OF APPL. = 112 LB./S.Y./IN.		TOTAL 185.1 (use 185 ton)

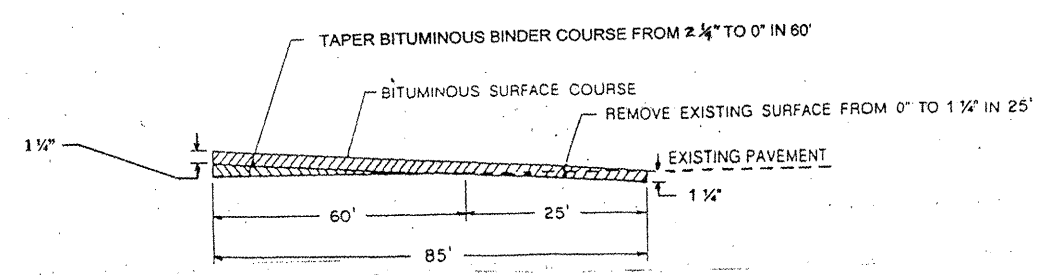
**40600625 LEVELING BINDER (MACHINE METHOD) N50**

LOCATION	WIDTH	QUANTITY REQUIRED
STA. 0+85 TO 30+25 (MAIN LANES) 1 3/4"	24'	768.3 TON
STA. 34+25 TO 56+42 (MAIN LANES) 1 3/4"	24'	579.4 TON
		1347.7 TON
RATE OF APPL. = 112 LB./S.Y./IN.		TOTAL 1347.7 TON (USE 1348 TON)

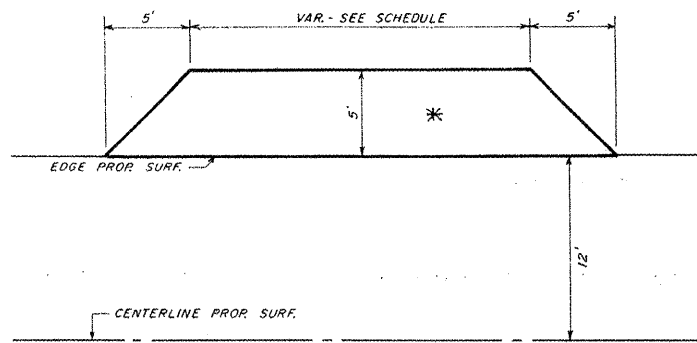
**48101200 AGGREGATE SHOULDERS, TYPE B**

LOCATION	WIDTH	QUANTITY REQUIRED
STA. 0+00 TO 31+10 (MAIN LANES)	4'	843.3 TON
STA. 33+38 TO 57+00 (MAIN LANES)	4'	640.5 TON
		1483.8 TON
RATE OF APPL. = 2.08T/C.Y.		TOTAL 1483.8 (USE 1484 TON)

**BUTT JOINT & TAPER DETAIL**



**ENTRANCE DETAIL**  
SCALE: 1" = 5'



**SCHEDULE OF ENTRANCES**

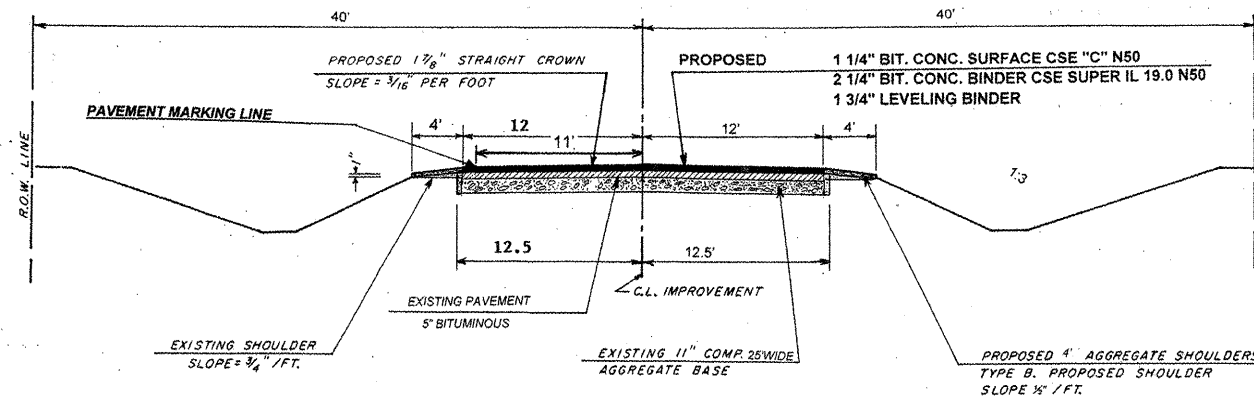
STATION	WIDTH	SQ YDS	TONS MIXT. REQUIRED
LT 16+75	22'	15.0	4.2
RT 22+10	22'	15.0	4.2
LT 24+40	22'	15.0	4.2
RT 43+60	22'	15.0	4.2
LT 43+70	22'	15.0	4.2
RT 55+60	22'	15.0	4.2
LT 55+85	22'	15.0	4.2
		105.0	29.4
		SQ YD	TON

\*CONSISTS OF 5" BITUMINOUS CONCRETE SURFACE COURSE, SUPERPAVE MIX "C" N50

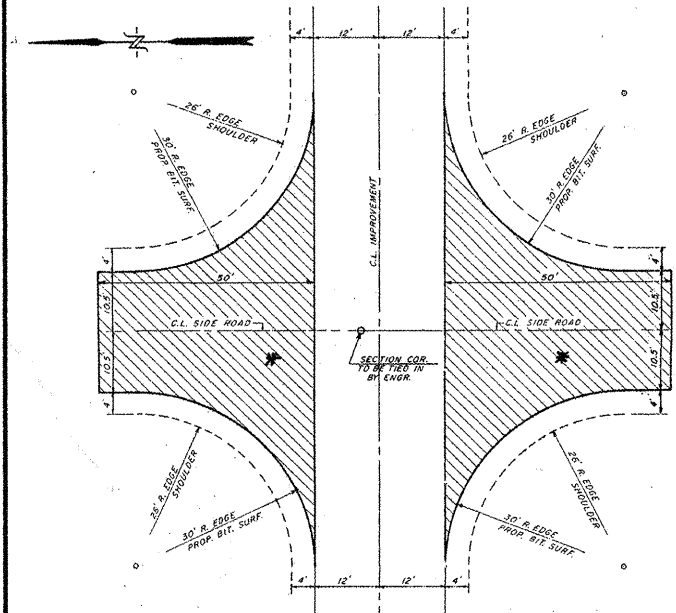
FAS ROUTE NO.	COUNTY	SECTION	CONTRACT	CO. HWY. NO.	SHEET NO.	TOTAL SHEETS
368	MARSHALL	06-00082-00-RS	89442	4	3	3

**TYPICAL CROSS SECTION**

THE THICKNESS OF BITUMINOUS MIXTURE SHOWN ON THE PLANS IS THE NOMINAL THICKNESS. DEVIATION FROM THE NOMINAL THICKNESS WILL BE PERMITTED WHEN SUCH DEVIATIONS OCCUR DUE TO IRREGULARITIES IN THE EXISTING SURFACE OR BASE ON WHICH THE BITUMINOUS MIXTURE IS PLACED.



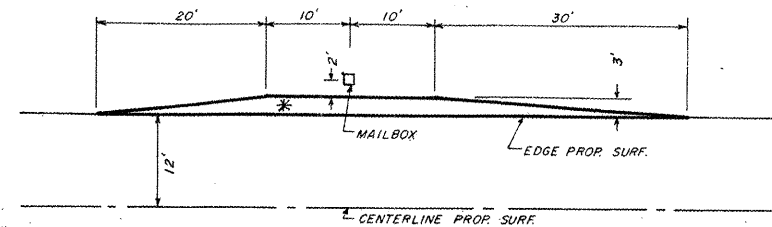
**INTERSECTION DETAIL**  
STA. 3+35



Total Area LT.	159.7 SQ YDS
Total Area RT.	159.7 SQ YDS
Thickness Required	5" COMP
Incidental Hot-Mix Asphalt Surfacing Required LT.	44.7 TON
Incidental Hot-Mix Asphalt Surfacing Required RT.	44.7 TON
Hot-Mix Asphalt Surface Removal Butt Joint LT. & RT.	122.2 SQ YDS

\*CONSISTS OF 5" BITUMINOUS CONCRETE SURFACE COURSE, SUPERPAVE MIX "C" N50

**MAILBOX TURNOUT DETAIL**  
SCALE: 1" = 10'

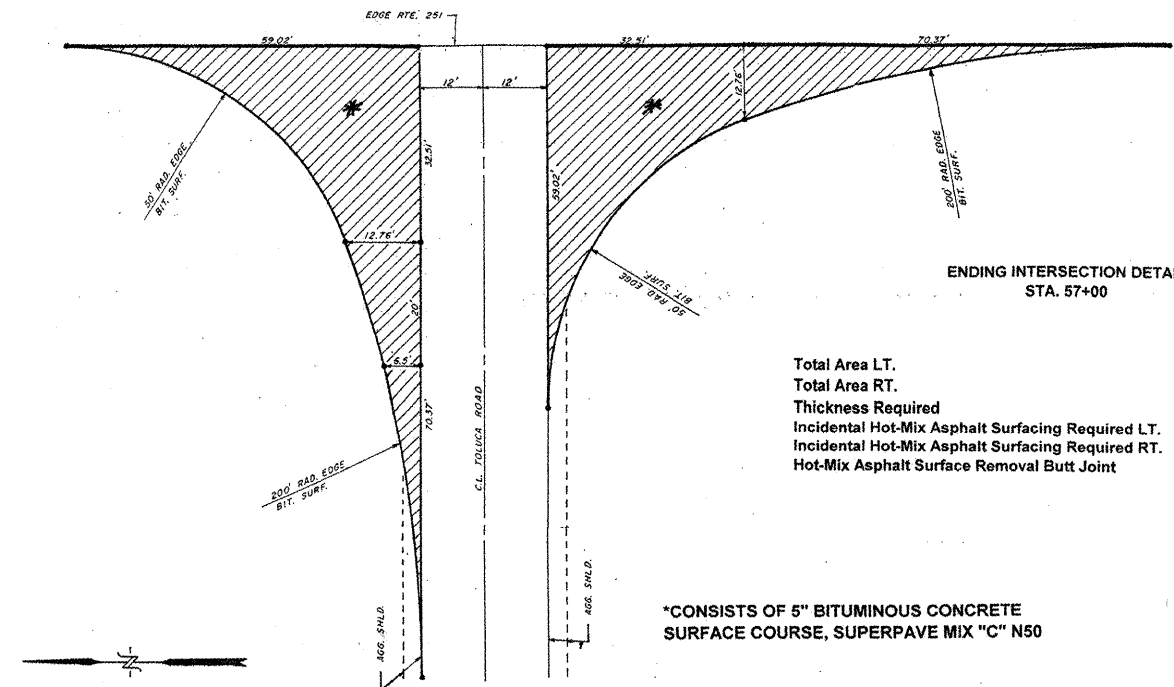


**MAILBOX TURNOUTS**

STATION	SQ YDS	TONS MIXT. REQUIRED
LT 16+50	15.0	4.2
LT 43+40	15.0	4.2
	30.0	8.4
	SQ YD	TON

\*CONSISTS OF 5" BITUMINOUS CONCRETE SURFACE COURSE, SUPERPAVE MIX "C" N50

**ENDING INTERSECTION DETAIL**  
STA. 57+00



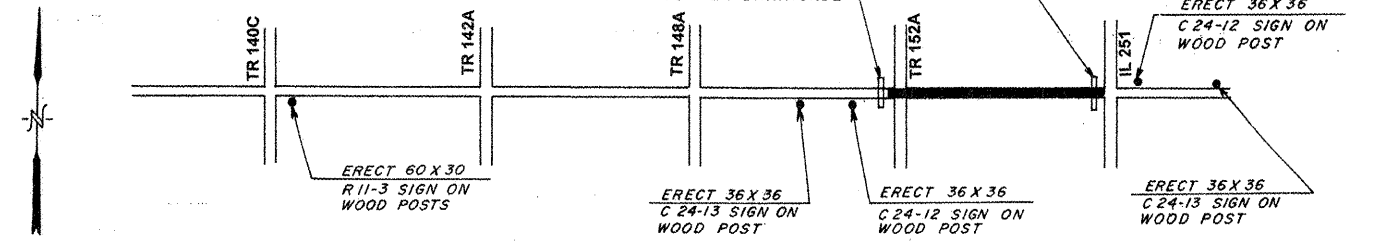
Total Area LT.	126.0 SQ YDS
Total Area RT.	127.0 SQ YDS
Thickness Required	5" COMPL.
Incidental Hot-Mix Asphalt Surfacing Required LT.	35.3 TON
Incidental Hot-Mix Asphalt Surfacing Required RT.	35.6 TON
Hot-Mix Asphalt Surface Removal Butt Joint	166.6 SQ YDS

\*CONSISTS OF 5" BITUMINOUS CONCRETE SURFACE COURSE, SUPERPAVE MIX "C" N50

**LOCATION MAP SHOWING REQUIRED BARRICADE AND SIGN PLACEMENTS**

**SIGN LEGEND**

- C24-12 ROAD CLOSED 500 FT.
- C24-13 ROAD CLOSED 1000 FT.
- R11-4 ROAD CLOSED TO THRU TRAFFIC (WHITE)
- R11-3 ROAD, CLOSED 3 MILES AHEAD (WHITE)



NOTE: REFER TO STANDARD 701901 FOR ERECTION OF SIGNS AND PLACEMENT OF TYPE III BARRICADES. TYPE A LOW INTENSITY LIGHTS ARE REQUIRED ABOVE THE FIRST TWO WARNING SIGNS FROM EACH DIRECTION AS PER STANDARD BLR 22-5