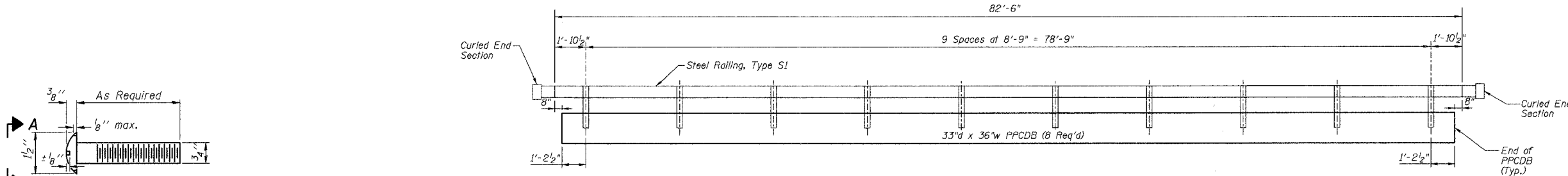
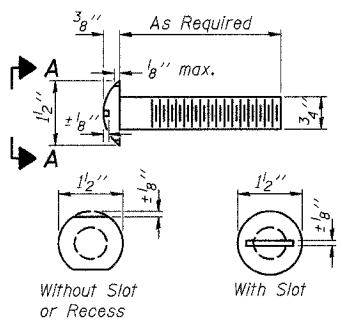


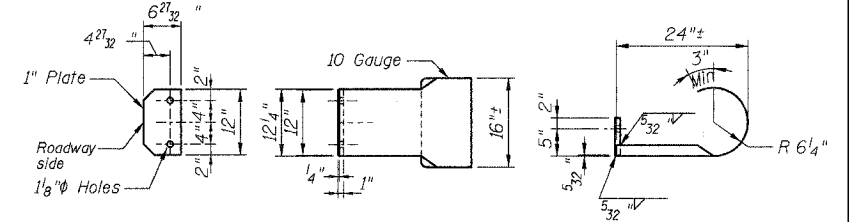
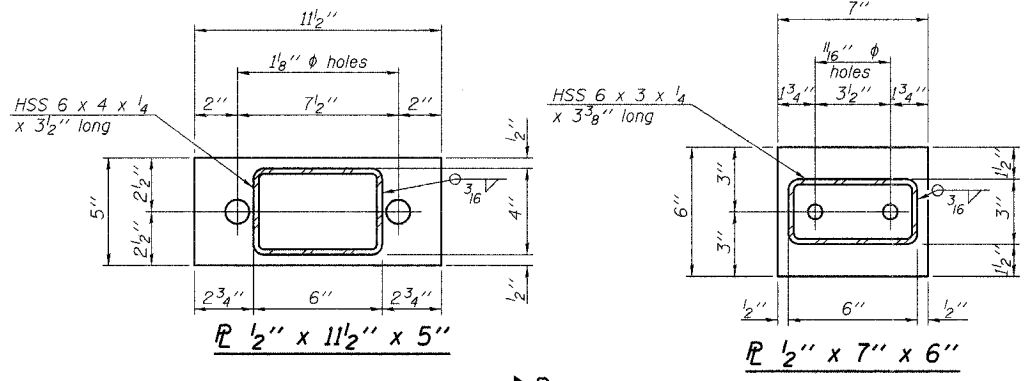
ROUTE	SECTION	COUNTY	TOTAL SHEETS	SHEET NO.
TR 454	06-19125-00-BR	FAYETTE	9	8
FED. ROAD DIST. NO. 7	ILLINOIS	FED. AID PROJECT		
CONTRACT NO. 95532				



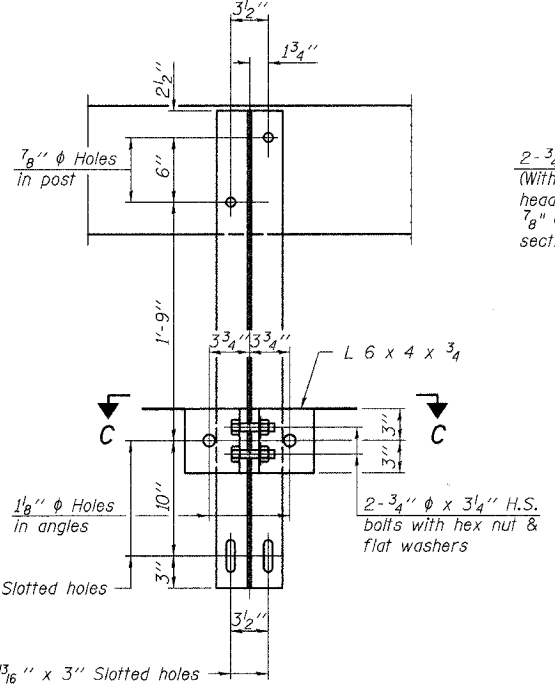
ELEVATION



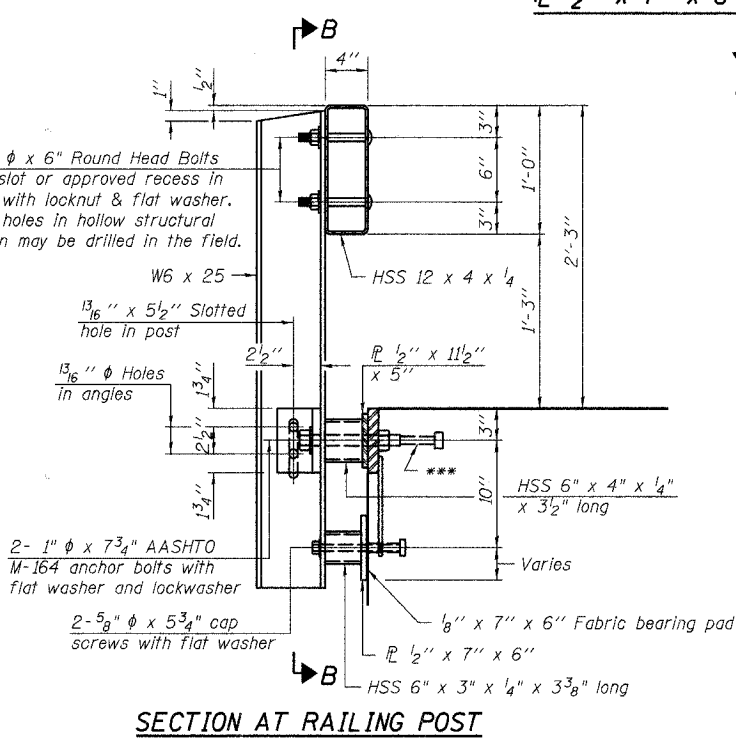
**VIEW A-A
ROUND HEAD BOLT**



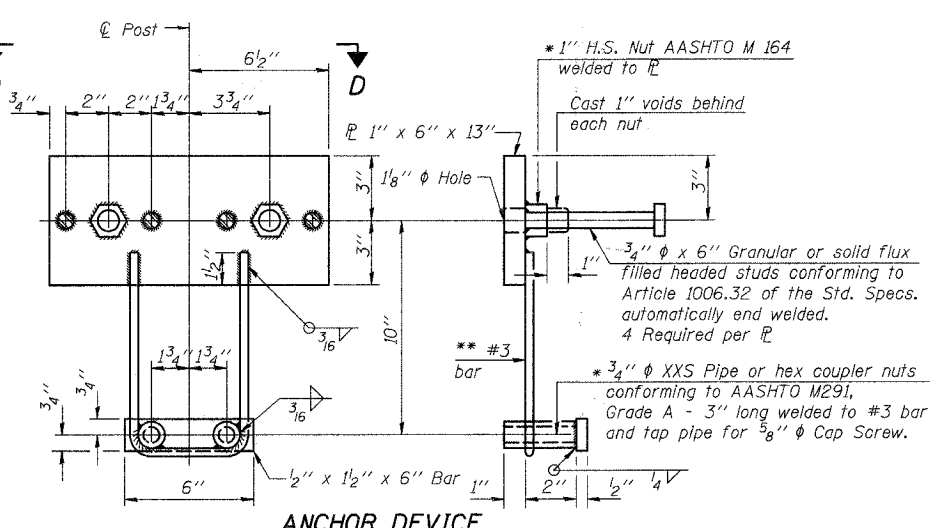
CURLED END SECTION DETAILS
The cost of the Curled End Section is included in the cost of the "STEEL RAILING, TYPE S1", and no additional compensation will be allowed.



SECTION B-B

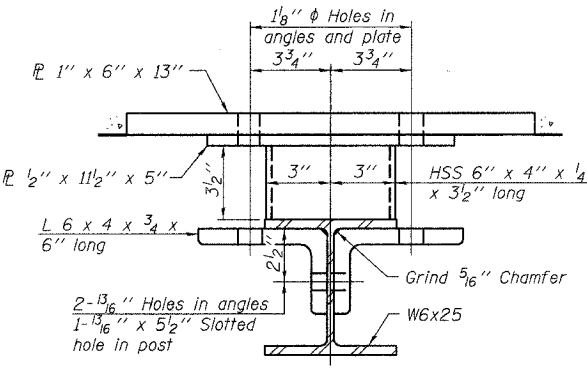


SECTION AT RAILING POST

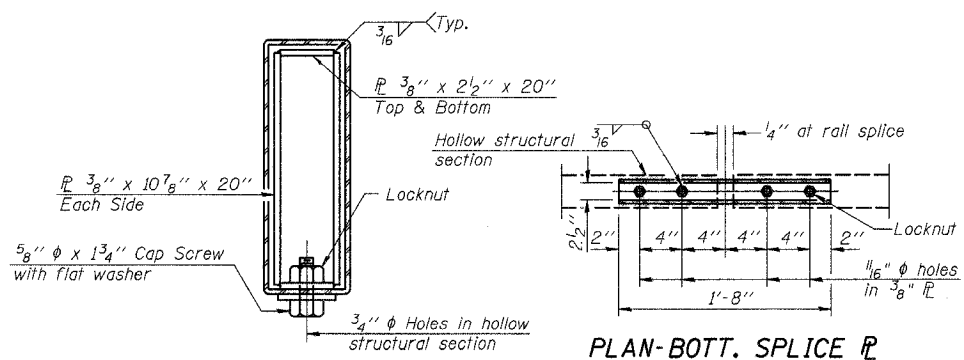


ANCHOR DEVICE

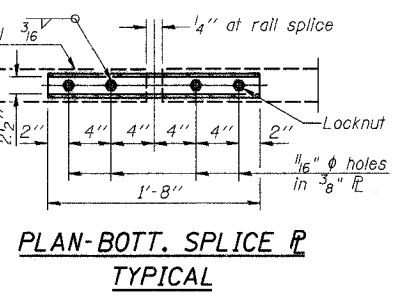
Notes:
All field drilled holes shall be coated with an approved zinc rich paint before erection.
For multi-span bridges, sufficient 1/4" x 6" x 1'-2" galvanized steel shims shall be provided to align rail between adjacent spans. Cost included with Steel Railing, Type S1.
All steel rail elements shall be galvanized according to Article 509.05 of the Standard Specifications.
*** The studs of the anchor devices shall be placed below the top reinforcement bars and the outermost longitudinal reinforcement bar shall be placed directly above the studs of the rail post anchor device.



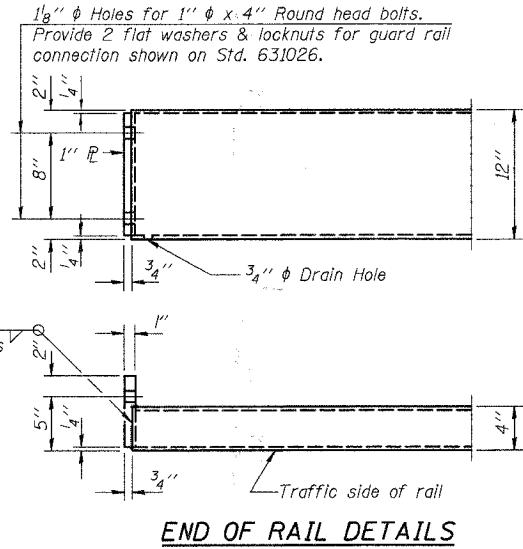
SECTION C-C



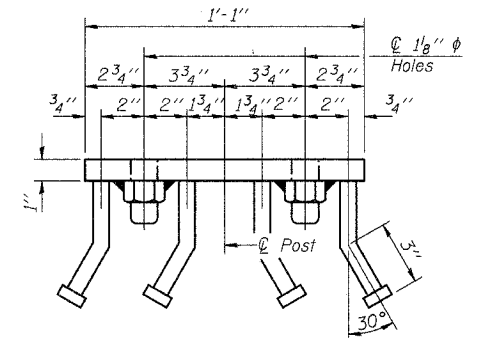
SECTIONS AT RAIL SPLICE



PLAN-BOTT. SPLICE TYPICAL



END OF RAIL DETAILS



VIEW D-D

BILL OF MATERIAL

Item	Unit	Quantity
Steel Railing, Type S1	Foot	165

STEEL RAILING, TYPE S1 DETAILS
PROPOSED BRIDGE OVER
HICKORY CREEK
TR 454
SECTION 06-19125-00-BR
FAYETTE COUNTY, ILLINOIS

10/31/2007