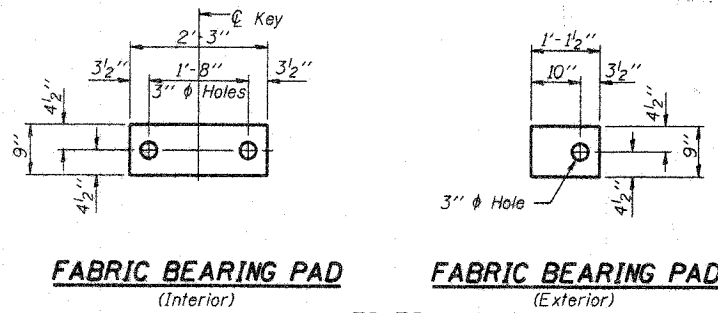


ROUTE NO.	SECTION	COUNTY	SHEETS	SHEET NO.
F.A.S. 1705	08-00110-00-BR	JASPER	15	7
FED. ROAD DIST. NO. 7		ILLINOIS	FED. AID PROJECT	

Contract # 95559

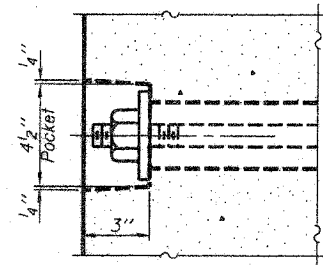


FABRIC BEARING PAD
(Interior)

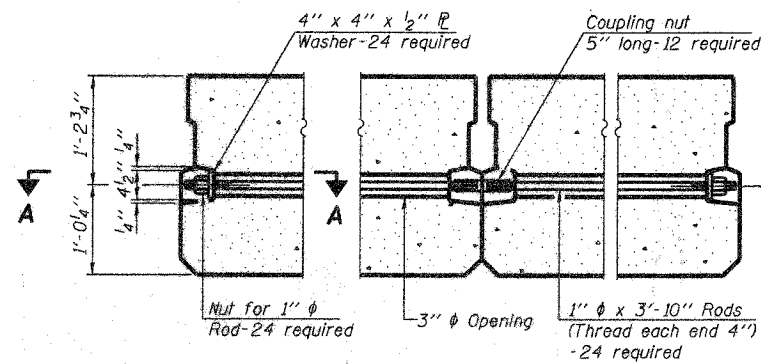
FABRIC BEARING PAD
(Exterior)

FIXED

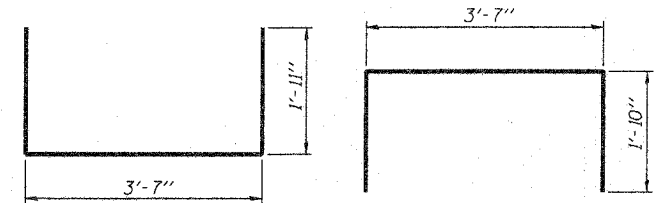
Note: Omit holes when using expansion bearings.



SECTION A-A

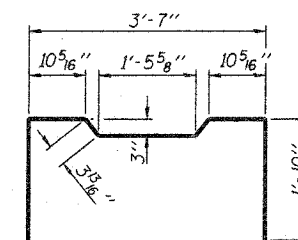


TYPICAL TRANSVERSE TIE ASSEMBLY

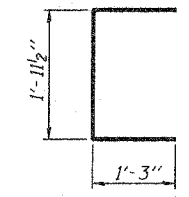


BAR S(E)

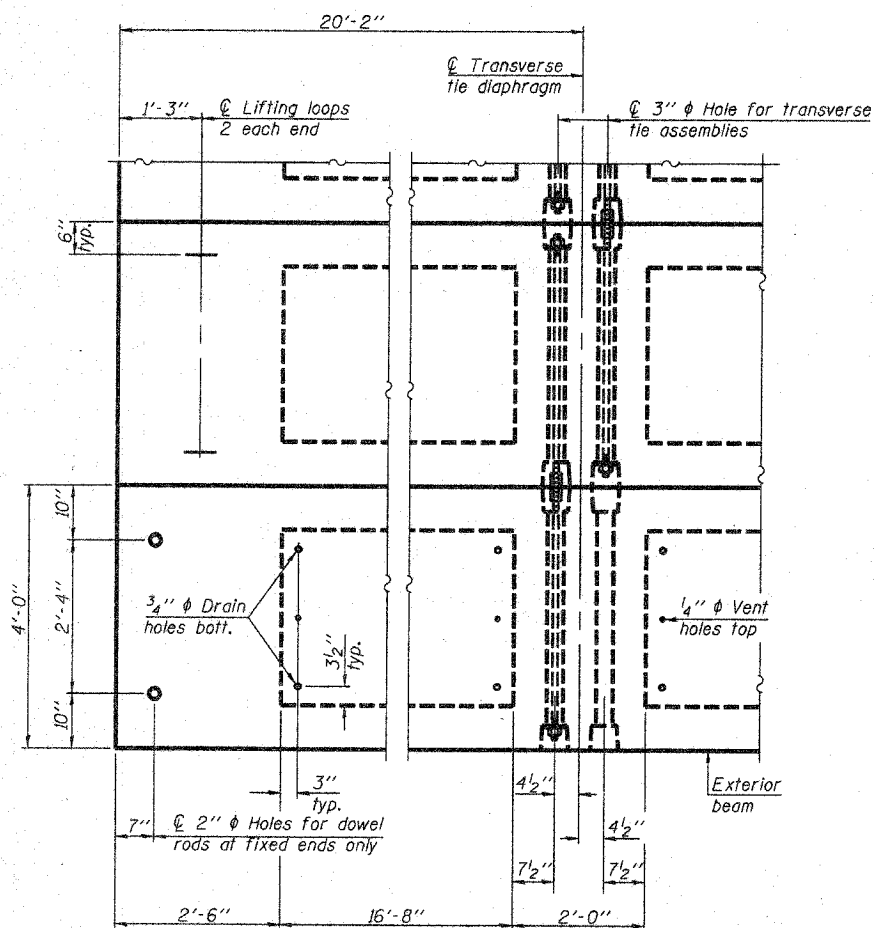
BAR S1(E)



BAR S2(E)

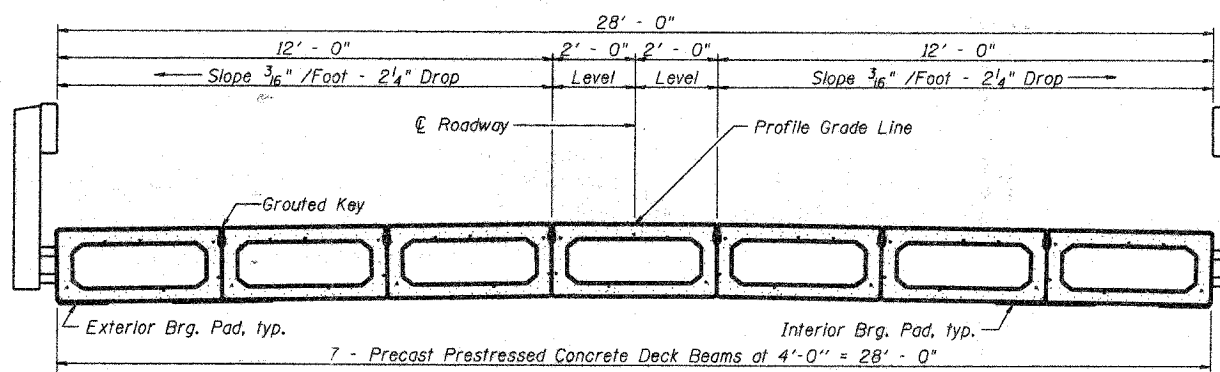


BAR U1(E)



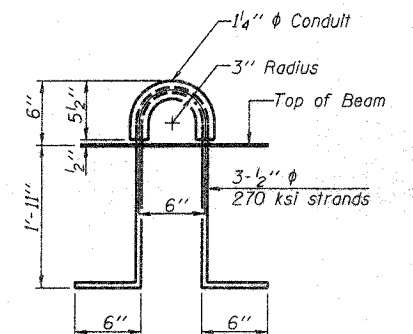
PLAN VIEW

Note: Connect beams in pairs with the transverse tie configuration shown.



CROSS SECTION

Steel Bridge Rail, Type S-1, See Sheet 4 of 7 for details



LIFTING LOOP DETAIL

BILL OF MATERIAL

Precast Prestressed Conc. Deck Bms. (27" depth)	Sq. Ft.	1680
---	---------	------

27" X 48" PPC DECK BEAM DETAILS

NOTES

- Prestressing steel shall be uncoated high strength, low relaxation 7-wire strand, Grade 270. The nominal diameter shall be 1/2" and the nominal cross-sectional area shall be 0.153 sq. in. The 1" rods in the transverse tie assembly shall be tightened to a snug fit and the threads set. Pockets on exterior faces of bridge shall be filled with grout after transverse tie assembly is in place.
- Reinforcement bars shall conform to ASTM A 706 (IL MOD), Grade 60. (See Special Provisions)
- Two 1/8" fabric adjusting shims of the dimensions of the exterior bearing pad shall be provided for each bearing pad location.
- A minimum 2 1/2" diameter lifting pin shall be used to engage the lifting loops during handling.
- Corrosion Inhibitor, per Article 1020.05(b)(12) and 1021.06 of the Standard Specifications, shall be used in the concrete for precast prestressed concrete deck beams.
- Compressive strength of prestressed concrete, f'c, shall be 6000 psi.
- Compressive strength of prestressed concrete at release, f'cl, shall be 5000 psi.

ESI CONSULTANTS, LTD
753 WINSTON ROAD
CHARLESTON, IL 61920
(217) 348-1800
WWW.ESICONSULTANTS.LTD.COM
ILLINOIS DEPARTMENT OF PROFESSIONAL REGULATION REGISTRATION #184-003685

SUPERSTRUCTURE DETAILS
F.A.S. 1705
OVER TURKEY CREEK
SECTION 08-00110-00-BR
JASPER COUNTY
STATION 5+00

DATE: 05-07-08 DRAWN BY: ADG CHECKED BY: DF