

ROUTE	SECTION	COUNTY	TOTAL SHEETS	SHEET NO.
F.A.S. 1705	08-00110-00-BR	JASPER	15	1
		ILLINOIS	PROJECT BRS-1705(102)	

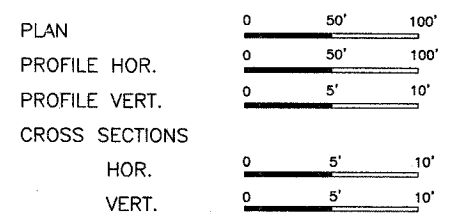
STATE OF ILLINOIS
DEPARTMENT OF TRANSPORTATION
DIVISION OF HIGHWAYS
PLANS FOR PROPOSED
HIGHWAY BRIDGE PROGRAM
SECTION 08-00110-00-BR JASPER COUNTY
PROJECT BRS-1705(102)
JOB NO. C-97-106-08
F.A.S. 1705

CONTRACT NO. 95559
Joint Utility Locating Information for Excavators
JULIE 1-800-892-0123

INDEX OF SHEETS

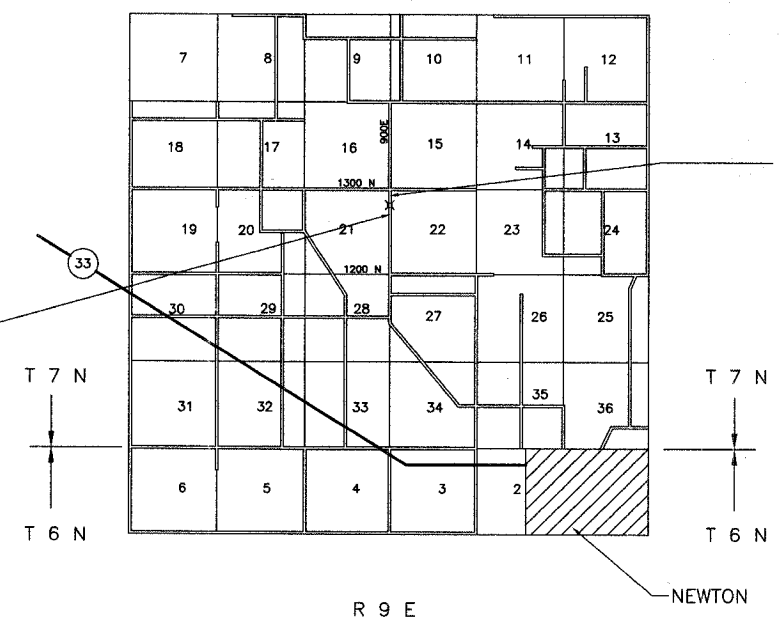
SHEET	ITEM
1	COVER SHEET
2	SUMMARY OF QUANTITIES
3	ROADWAY PLAN AND PROFILE
4	EROSION CONTROL PLAN
5	GENERAL PLAN AND ELEVATION
6	SUPERSTRUCTURE
7	SUPERSTRUCTURE DETAILS
8	STEEL RAILING, TYPE S-1
9	ABUTMENT DETAILS
10	PILE DETAILS
11	BORING LOGS
12-15	CROSS SECTIONS

- STANDARD DRAWINGS
- STANDARD 000001-05
 - STANDARD 280001-04
 - STANDARD 515001-02
 - STANDARD 666001
 - STANDARD 701901
 - STANDARD BLR 21-7
 - STANDARD BLR 22-5
 - STANDARD BLR 23-2
 - STANDARD BLR 26
 - STANDARD BLR 27



SECTION 08-00110-00-BR BEGINS STA. 0+50.00

SINGLE SPAN PRECAST PRESTRESSED CONCRETE DECK BEAM BRIDGE
61'-6" BK - BK ABUTMENTS
STEEL PILE / SPILLTHROUGH ABUTMENTS
28' DECK



SECTION 08-00110-00-BR ENDS STA. 9+50.00

NET LENGTH SECTION 08-00110-00-BR = 900.00 Ft. = 0.170 Mi.

FUNCTIONAL CLASSIFICATION - RURAL MAJOR COLLECTOR
ADT = 375
DESIGN SPEED = 40 MPH

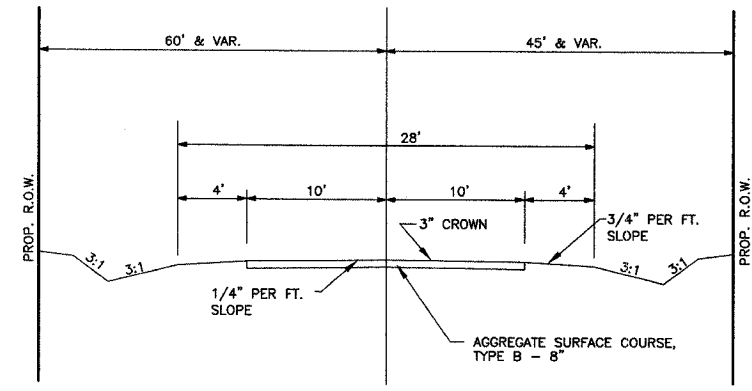
Robert A. Charlton
Ill. Reg. Prof. Eng. #29175
Licenses Expires 11/30/09
5/1/08

CHARLESTON ENGINEERING INCORPORATED
2818 REGISTERED PROFESSIONAL ENGINEER OF ILLINOIS
105 N. KITCHELL
P.O. BOX 397
OLNEY, ILLINOIS 62450
PH. 618-392-0736

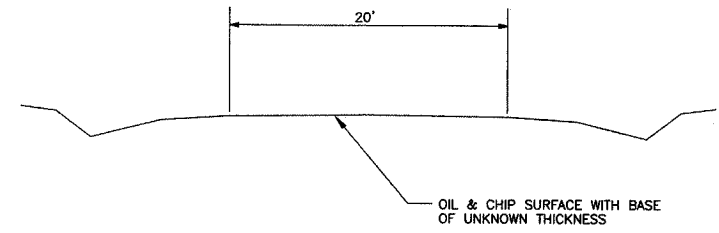
APPROVED	<i>May 9 2008</i> <i>Robert A. Charlton</i>	
	COUNTY ENGINEER	
PASSED	<i>5-21 2008</i> <i>Maureen Eastl</i>	
	DISTRICT SEVEN ENGINEER OF LOCAL ROADS AND STREETS	
Releasing For Bid Based on Limited Review	<i>May 27 2008</i> <i>Roger Z. Dinkel</i>	
	DEPUTY DIRECTOR OF HIGHWAYS REGION FOUR ENGINEER	
STATE OF ILLINOIS DEPARTMENT OF TRANSPORTATION		

ROUTE	SECTION	COUNTY	TOTAL SHEETS	SHEET NO.
F.A.S. 1705	08-00110-00-BR	JASPER	15	2
CONTRACT NO. 95559		ILLINOIS	PROJECT BRS-1705(102)	

DESIGN DATA
RURAL MAJOR COLLECTOR
ADT = 375



TYPICAL SECTION
PROPOSED



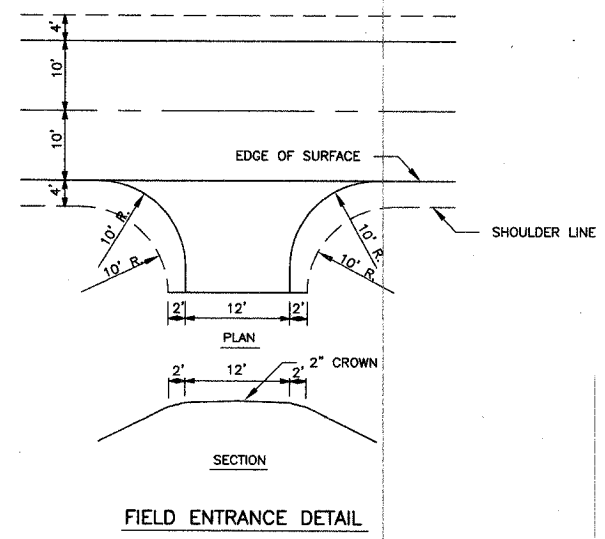
TYPICAL SECTION
EXISTING

GENERAL NOTES

- SEEDING: THIS WORK SHALL BE PERFORMED IN ACCORDANCE WITH THE APPLICABLE PORTIONS OF SECTION 250 OF THE STANDARD SPECIFICATIONS AND SHALL BE PAID FOR AT THE CONTRACT UNIT PRICE FOR SEEDING CLASS 2 (SPECIAL).
 - SPRING SEEDING SHALL EXTEND FROM JANUARY 1 TO JUNE 30
 - FALL SEEDING SHALL EXTEND FROM JULY 1 TO DECEMBER 31
 - FERTILIZER NUTRIENTS SHALL BE APPLIED AT THE RATE OF 100 LB/ACRE
 - MULCHING SHALL BE DONE IN ACCORDANCE WITH ARTICLE 251 OF THE STANDARD SPECIFICATIONS AND SHALL BE DONE BY METHOD 2, PROCEDURE 1 AT THE RATE OF 2 TONS PER ACRE.
2. NO PAYMENT FOR OVERHAUL WILL BE MADE ON THIS SECTION.

SUMMARY OF QUANTITIES			
CODE NO.	ITEM	UNIT	QUANTITY
20100210	TREE REMOVAL (OVER 15 UNITS DIAMETER)	UNIT	42
20200100	EARTH EXCAVATION	CU YD	865
20300100	CHANNEL EXCAVATION	CU YD	250
20400800	FURNISHED EXCAVATION	CU YD	1320
25001000	SEEDING, CLASS 2 (SPECIAL)	ACRE	1.45
28000300	TEMPORARY DITCH CHECKS	EACH	11
28000400	PERIMETER EROSION BARRIER	FOOT	250
28100208	STONE RIPRAP, CLASS A4 (SPECIAL)	TON	411
35101400	AGGREGATE BASE COURSE, TYPE B	TON	60
40200800	AGGREGATE SURFACE COURSE, TYPE B	TON	750
50100100	REMOVAL OF EXISTING STRUCTURES	EACH	1
50200100	STRUCTURE EXCAVATION	CU YD	80.9
50300225	CONCRETE STRUCTURES	CU YD	20.8
50300280	CONCRETE ENCASEMENT	CU YD	3.5
50400505	PRECAST PRESTRESSED CONCRETE DECK BEAMS (27" DEPTH)	SQ FT	1680
50800205	REINFORCEMENT BARS, EPOXY COATED	POUND	2580
* 50900205	STEEL RAILING, TYPE S1	FOOT	120
51201400	FURNISHING STEEL PILES HP 10X42	FOOT	295
51202305	DRIVING PILES	FOOT	295
51203400	TEST PILE STEEL HP 10X42	EACH	1
51500100	NAME PLATES	EACH	1
5420223	PIPE CULVERTS, CLASS A, TYPE 1 18"	FOOT	202
5420223	PIPE CULVERTS, CLASS D, TYPE 1 18"	FOOT	26
* 63100075	TRAFFIC BARRIER TERMINAL, TYPE 5A	EACH	4
66600105	FURNISHING AND ERECTING RIGHT-OF-WAY MARKERS	EACH	8
67100100	MOBILIZATION	L. SUM	1
* LR631020	TRAFFIC BARRIER TERMINAL, TYPE 1	EACH	4

* SPECIALTY ITEMS



FIELD ENTRANCE DETAIL

ROUTE	SECTION	COUNTY	TOTAL SHEETS	SHEET NO.
F.A.S. 1705	08-00110-00-BR	JASPER	15	3
CONTRACT NO. 93559		ILLINOIS		



SCALES:
1" = 50' HOR
1" = 5' VER

TELEPHONE LINE
MONTROSE MUTUAL TELEPHONE
DIETERICH, IL 62424
PH. 217-925-5242

STA. 5+00.00 PROPOSED STRUCTURE NO. 040-3258
SINGLE SPAN PRECAST PRESTRESSED CONCRETE DECK BEAM BRIDGE
51'-6" BK - BK. ABUTMENTS
STEEL H PILE / SPILLTHROUGH ABUTMENTS
28' DECK

STA. 5+00.00 EXISTING STRUCTURE NO. 040-3015
SINGLE SPAN CONCRETE DECK BEAM BRIDGE
26' BK - BK. ABUTMENTS
CLOSED TIMBER ABUTMENTS
20' CONCRETE DECK

TIES P.O.T. STA. 3+50.50

TIES P.O.T. STA. 0+00.00

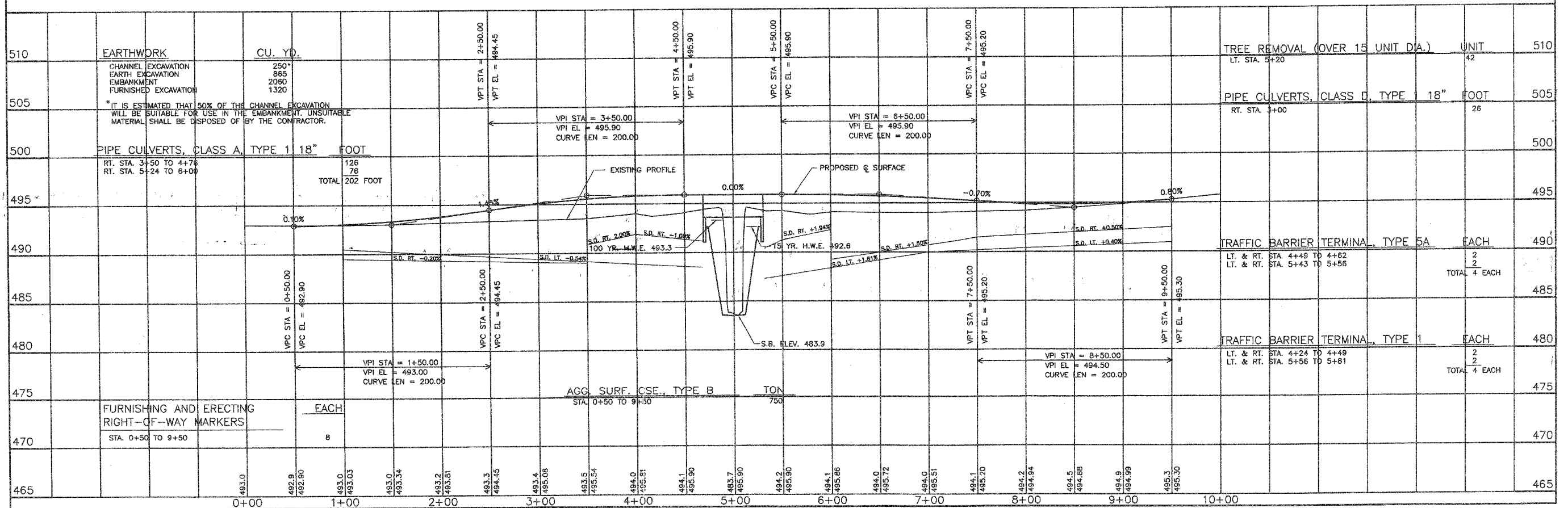
POWER LINE
NORRIS ELECTRIC CO-OP
NEWTON, ILLINOIS
PH. 618-783-8765

WATER LINE
E J WATER CORPORATION
DIETERICH, IL 62424
PH. 217-925-5566

SECTION 08-00110-00-BR ENDS STA. 9+50.00

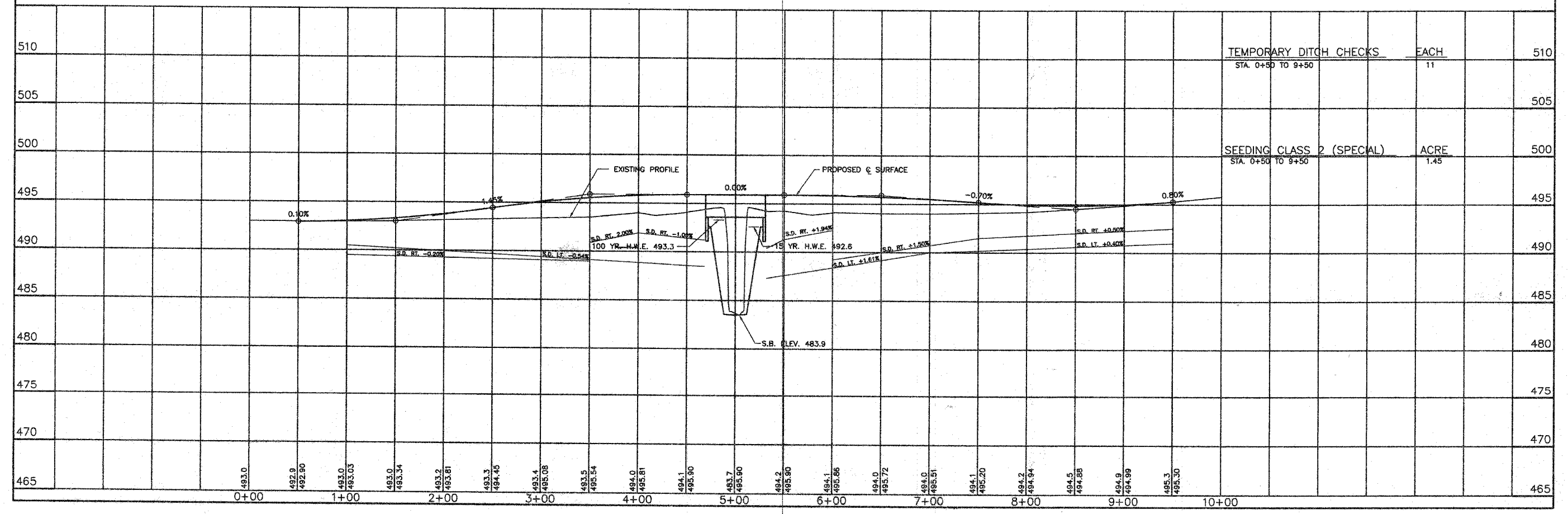
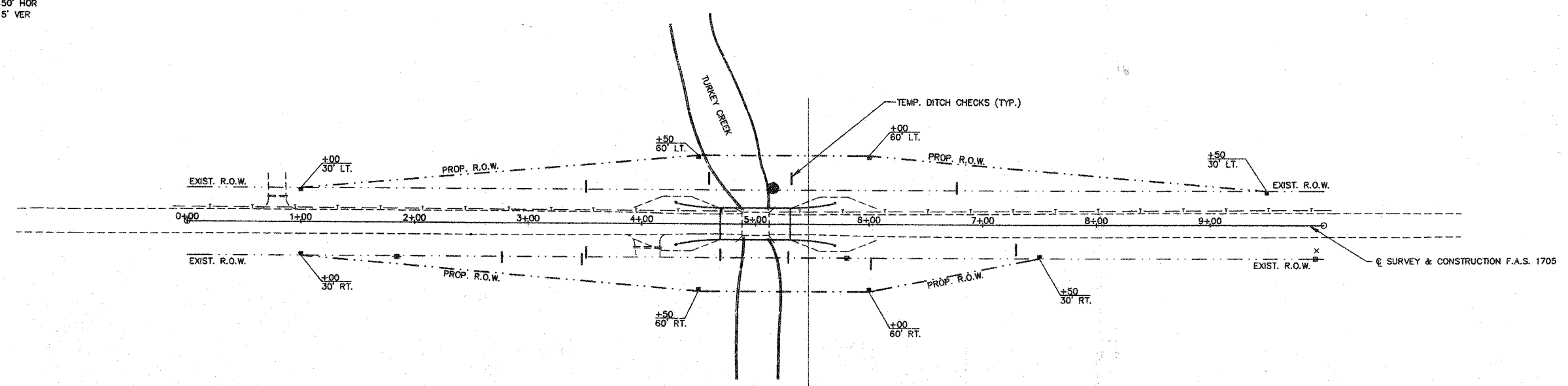
SECTION 08-00110-00-BR BEGINS STA. 0+50.00

PAUL E. & PAULA CLARK



SCALES:
 1" = 50' HOR
 1" = 5' VER

ROUTE	SECTION	COUNTY	TOTAL SHEETS	SHEET NO.
F.A.S. 1705	08-00110-00-BR	JASPER	15	4
CONTRACT NO. 95559		ILLINOIS		



TEMPORARY DITCH CHECKS	EACH	11
STA. 0+50 TO 9+50		
SEEDING CLASS 2 (SPECIAL)	ACRE	1.45
STA. 0+50 TO 9+50		

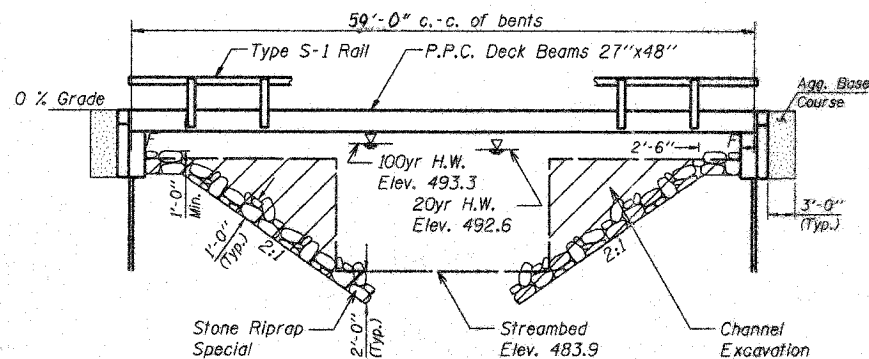
B.M. - Rt. Sta. 5+80, spike in power pole, elev. 494.44.

Existing Structure - Structure 040-3015 consists of single span Precast Channel Beams on closed timber abutments. The bk. to bk. of abutments length is 26' and the out-to-out width is 22.7'. The existing structure shall be completely replaced. Road closure shall be used during construction.

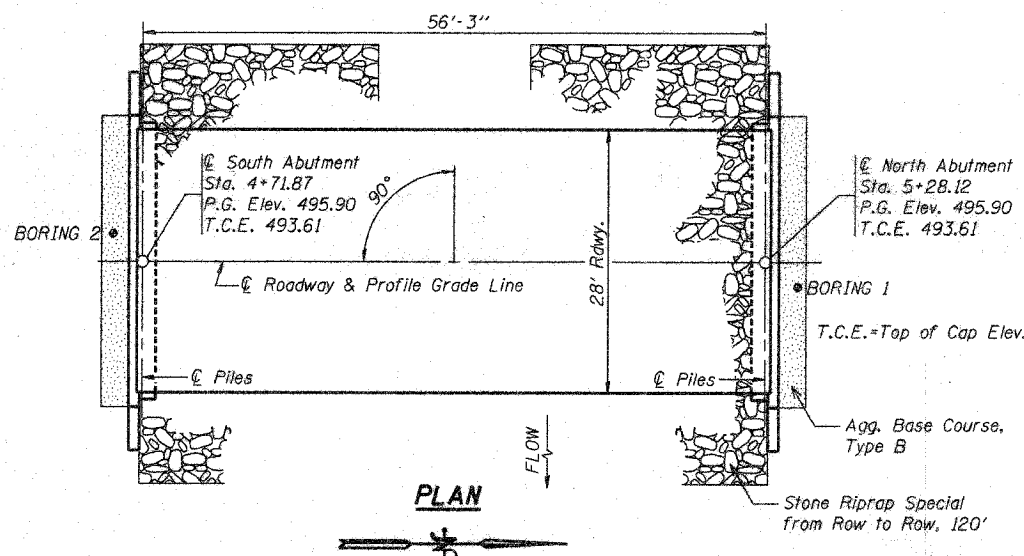
Salvage - Any material deemed salvageable by the Engineer shall be stockpiled on the R.O.W. and shall become the property of Jasper County. The Contractor shall dispose of all remaining material.

ROUTE NO.	SECTION	COUNTY	SHEET NO.	SHEET	SHEET NO.
F.A.S. 1705	08-00110-00-BR	JASPER	15	5	7 SHEETS
FED. ROAD DIST. NO. 7	ILLINOIS	FED. AID PROJECT			

Contract # 95559



ELEVATION



PLAN

GENERAL NOTES

- The Contractor shall drive 1 test pile, as specified, in a permanent location as directed by the Engineer before ordering the remaining piles.
- See Bridge Plan Sheet 7 for boring logs.
- A Corrosion inhibitor, as covered in the Special Provisions, shall be used in the concrete for precast prestressed concrete deck beams.
- Concrete sealer shall be applied to exterior face of each fascia beam. Reinforcement bars shall conform to the requirements of AASHTO M31 or M322 Grade 60.
- The Steel H-piles shall be according to AASHTO M270 grade 50.
- The test pile(s) shall be driven to 110 percent of the Nominal Required Bearing indicated in the pile data information.
- Reinforcement bars shall conform to the requirements of ASTM A 706 Fr 60 (IL Modified). See Special Provisions.
- Reinforcement bars designated (E) shall be epoxy coated.
- Layout of the slope protection system may be varied to suit ground conditions in the field as directed by the Engineer.

TOTAL BILL OF MATERIAL

Item	Unit	Super	Sub.		Total
			Piers	Abuts.	
Removal of Existing Structures	Each	-	-	-	1
Concrete Structures	Cu. Yd.	-	-	20.8	20.8
Precast Prestressed Concrete Deck Beams (27" Depth)	Sq. Ft.	1680	-	-	1680
Steel Bridge Railing, Type S-1	Foot	120	-	-	120
Reinforcement Bars, Epoxy Coated	Pound	-	-	2580	2580
Furnishing Steel Piles HP 10x42	Foot	-	-	295	295
Driving Piles	Foot	-	-	295	295
Test Piles Steel HP 10x42	Each	-	-	1	1
Name Plates	Each	1	-	-	1
Concrete Encasement	Cu. Yd.	-	-	3.5	3.5
Structure Excavation	Cu. Yd.	-	-	80.9	80.9
Stone Riprap Class A4 (Special)	Ton	-	-	411	411
Aggregate Base Course, Type B	Ton	-	-	60	60
Channel Excavation	Cu. Yd.	-	-	250	250

INDEX OF SHEETS

- General Plan & Elevation
- Superstructure
- Superstructure Details
- Steel Railing
- Abutment Details
- Pile Details
- Boring Logs



Daniel Feuerborn
Licensed Structural Engineer
State of Illinois No. 81-5933
License Expires 11-30-2008

Date

ESI CONSULTANTS, LTD
733 WINDSOR ROAD
CHARLESTON, IL 61820
(317) 548-1880
WWW.ESICONSULTANTS.LTD.COM
ILLINOIS DEPARTMENT OF PROFESSIONAL REGULATION REGISTRATION #184-003680

GENERAL PLAN & ELEVATION

F.A.S. 1705

OVER TURKEY CREEK

SECTION 08-00110-00-BR

JASPER COUNTY

STATION 5+00

DATE: 05-07-08 DRAWN BY: ADG CHECKED BY: DF

STA 4+50 ELEV 495.90	0% Grade	STA 5+00 ELEV 495.90	STA 5+50 ELEV 495.90
-------------------------	----------	-------------------------	-------------------------

PROFILE GRADE

DESIGN STRESSES

FIELD UNITS

f'c = 3,500 psi
Fy = 60,000 psi (reinforcement)

PRECAST PRESTRESSED UNITS

f'c = 6,000 psi
f'ci = 5,000 psi
F's = 270,000 psi (1/2" low relax. strands)
Fsi = 201,960 psi (1/2" low relax. strands)

DESIGN SPECIFICATIONS

2007 AASHTO LRFD Bridge
Design Specifications - 4th ed.

LOADING HL-93

Allow 25#/sq. ft. for future
wearing surface.

SEISMIC DATA

Seismic Performance Zone (SPZ) = 1
Bedrock Acceleration Coefficient (A) = 0.075g
Site Coefficient (S) = 1.0

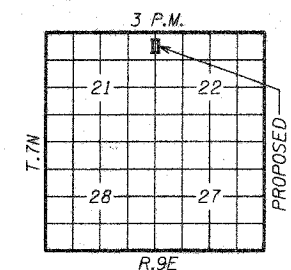
PILE DATA (2-ABUTS.)

Type	STEEL HP 10x42
Nominal Required Bearing	335 kips
Factored Resistance Available	167 kips
Estimated Pile Length	35 Feet North Abut. and 30 Feet South Abut.
Number of Production Piles	9
Number of Test Piles	1 (In South Abutment)

TURKEY CREEK
BUILT 200... BY
JASPER COUNTY
SEC. 08-00110-00-BR
PROJECT NO. BRS-1705(102)
F.A.S. 1705 STA. 5+00
STR. NO. 040-3258 LOADING HL-93

LETTERING FOR NAME PLATE

Locate Name Plate at Corner
of Bridge (See Std. 515001)



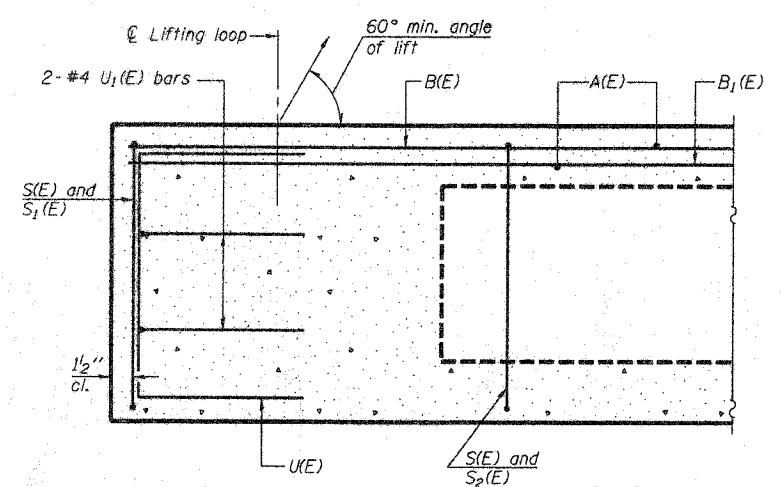
LOCATION SKETCH

WATERWAY INFORMATION

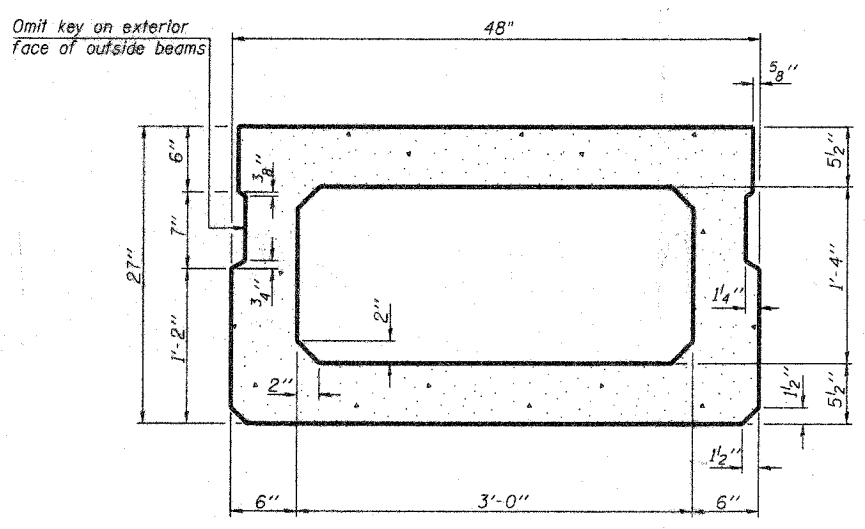
Drainage Area = 5.5 SQ MI		Low Grade Elev. = 495.9 @ Sta. 5+00							
Flood	Freq. Yr.	Q C.F.S.	Opening Sq. Ft.		Nat. Head - Ft.		Headwater El.		
			Exist.	Prop.	H.W.E. Exist.	Prop.	Exist.	Prop.	
Design	20	1965	148	340	492.6	0.1	0.1	492.7	492.7
Base	100	3060	166	380	493.3	2.2	0.7	495.5	494.0
Overlapping									
Max. Calc.	500								

ROUTE NO.	SECTION	COUNTY	DATE	SHEET	SHEET NO. 2 7 SHEETS
F.A.S. 1705	08-00110 -00-BR	JASPER	15	6	
FED. ROAD DIST. NO. 7	ILLINOIS	FED. AID PROJECT			

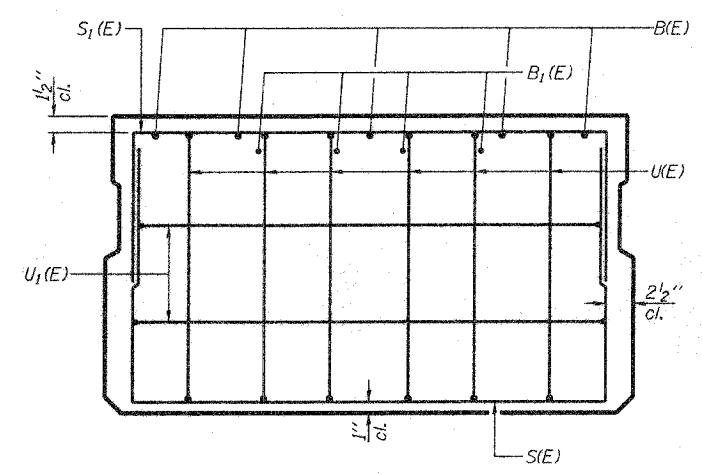
Contract # 95559



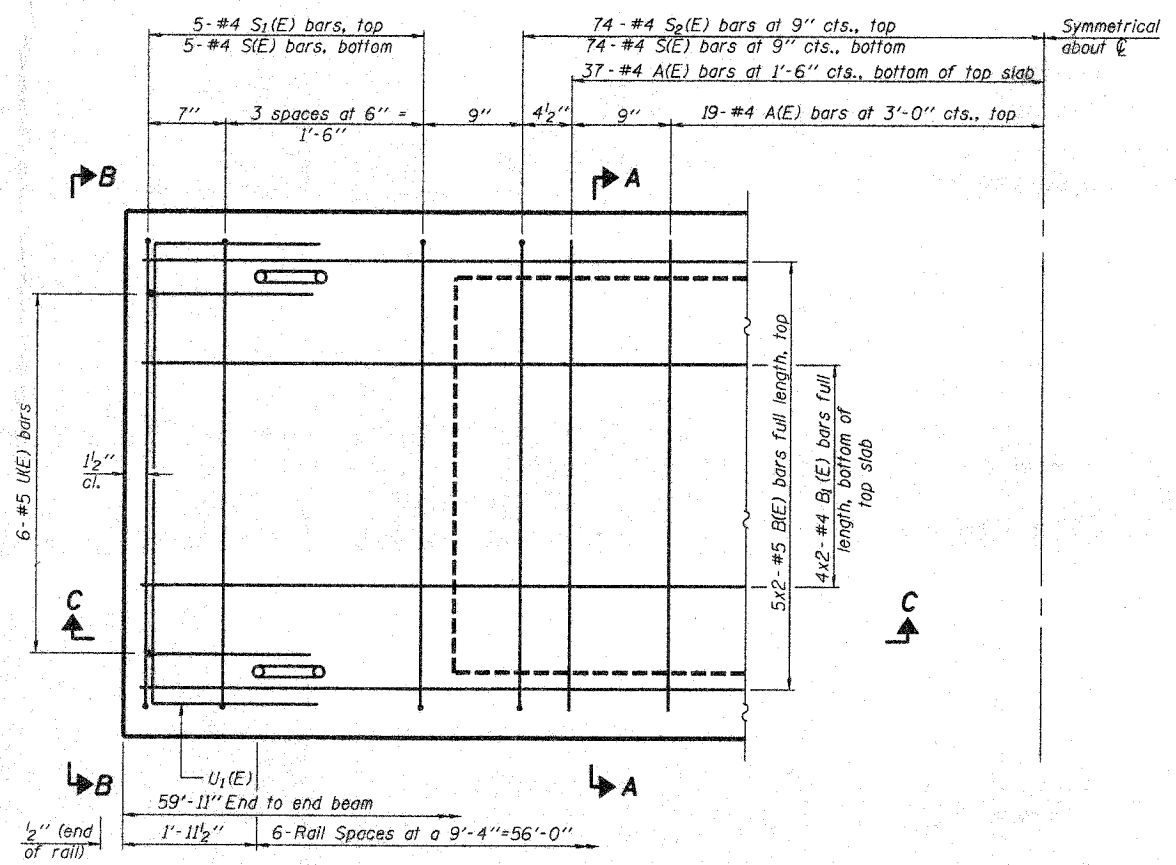
SECTION C-C



SECTION A-A
(Showing dimensions)

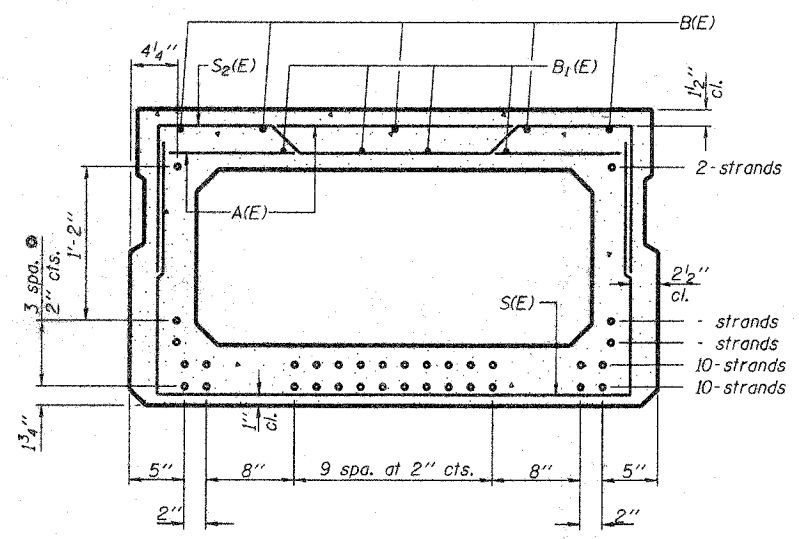


VIEW B-B



PLAN VIEW

Note: Spacing of S(E) and S2(E) bars may be adjusted up to 4" in the immediate area of the transverse tie diaphragms to miss the block outs for the transverse ties.
Bars indicated thus 5x2-#5 ect. indicates 5 lines of bars with 2 lengths per line.



SECTION A-A

(Showing reinforcement and permissible strand locations)
Note: Place the number of strands specified in each row symmetrically about the centerline of beam in the permissible strand locations shown.

BAR LIST
ONE BEAM ONLY
(For information only)

Bar	No.	Size	Length	Shape
A(E)	56	#4	3'-7"	—
B(E)	10	#5	30'-11"	—
B1(E)	8	#4	30'-8"	—
S(E)	72	#4	7'-5"	U
S1(E)	10	#4	7'-3"	U
S2(E)	74	#4	7'-6"	U
U(E)	12	#5	4'-6"	U
U1(E)	4	#4	6'-0"	U

Note: See sheet 3 of 7 for additional details and Bill of Material.

27" X 48" PPC DECK BEAM

MIN. BAR LAP

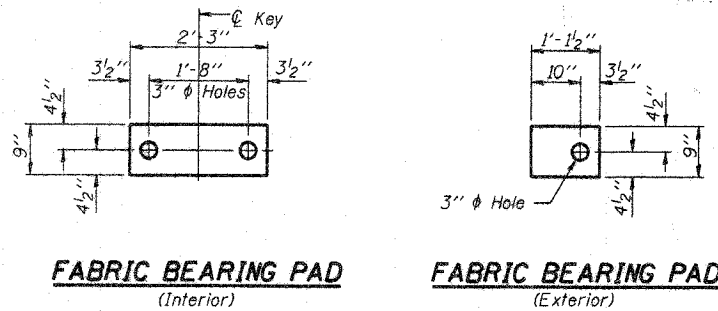
- #4 1'-8"
- #5 2'-2"

ESI CONSULTANTS, LTD
756 WINDSOR ROAD
CHARLESTON, IL 61920
(217) 348-1000
WWW.ESICONSULTANTSRLTD.COM
ILLINOIS DEPARTMENT OF PROFESSIONAL REGULATION REGISTRATION #184-003885

SUPERSTRUCTURE
F.A.S. 1705
OVER TURKEY CREEK
SECTION 08-00110-00-BR
JASPER COUNTY
STATION 5+00

DATE: 05-07-08 DRAWN BY: ADG
CHECKED BY: DF

ROUTE NO.	SECTION	COUNTY	SHEET	SHEET NO.
F.A.S. 1705	08-00110-00-BR	JASPER	15	7
SHEET NO. 3				
7 SHEETS				
Contract # 95559				

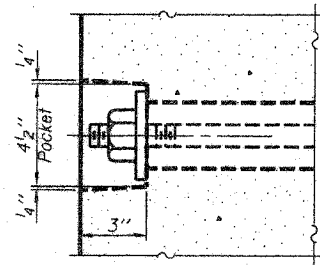


FABRIC BEARING PAD
(Interior)

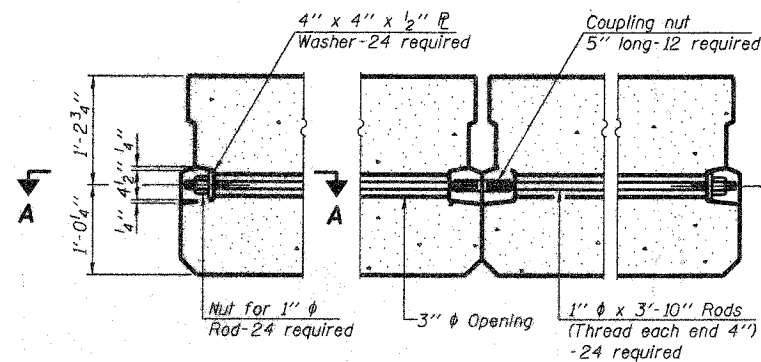
FABRIC BEARING PAD
(Exterior)

FIXED

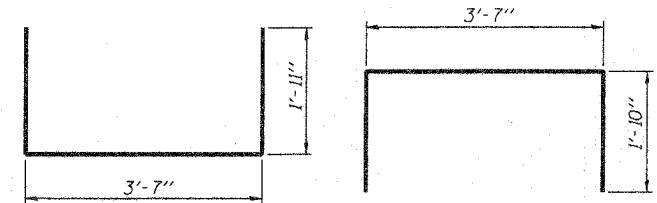
Note: Omit holes when using expansion bearings.



SECTION A-A

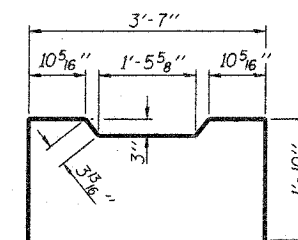


TYPICAL TRANSVERSE TIE ASSEMBLY

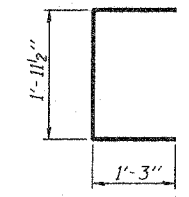


BAR S(E)

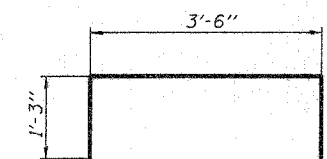
BAR S1(E)



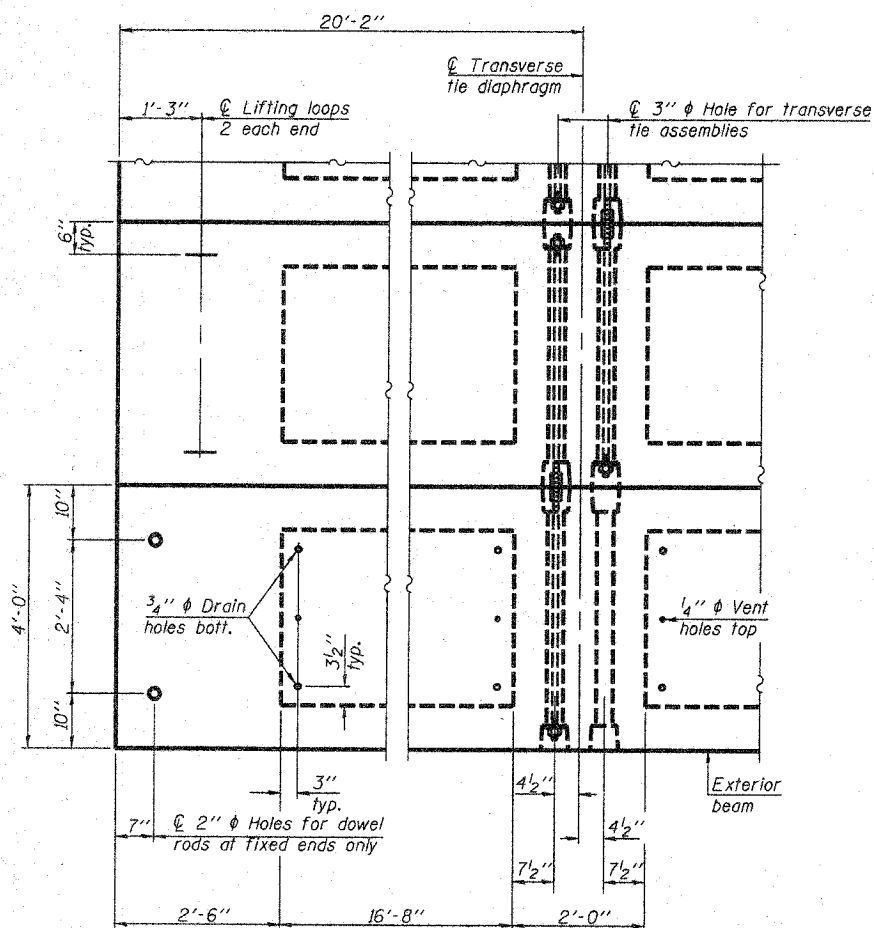
BAR S2(E)



BAR U(E)

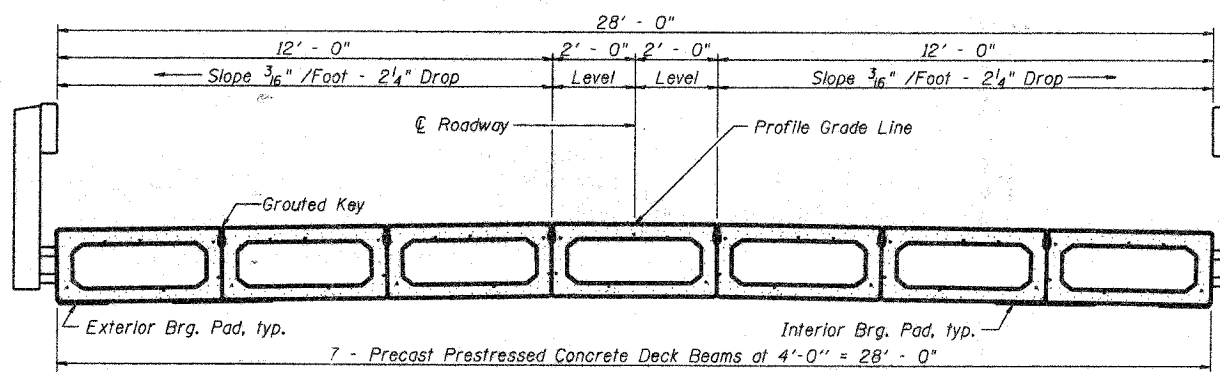


BAR U1(E)



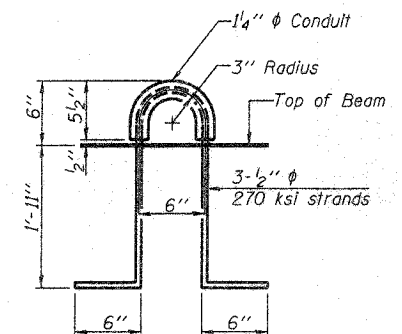
PLAN VIEW

Note: Connect beams in pairs with the transverse tie configuration shown.



CROSS SECTION

Steel Bridge Rail, Type S-1, See Sheet 4 of 7 for details



LIFTING LOOP DETAIL

BILL OF MATERIAL

Precast Prestressed Conc. Deck Bms. (27" depth)	Sq. Ft.	1680
---	---------	------

27" X 48" PPC DECK BEAM DETAILS

NOTES

- Prestressing steel shall be uncoated high strength, low relaxation 7-wire strand, Grade 270. The nominal diameter shall be 1/2" and the nominal cross-sectional area shall be 0.153 sq. in. The 1" rods in the transverse tie assembly shall be tightened to a snug fit and the threads set. Pockets on exterior faces of bridge shall be filled with grout after transverse tie assembly is in place.
- Reinforcement bars shall conform to ASTM A 706 (IL MOD), Grade 60. (See Special Provisions)
- Two 1/8" fabric adjusting shims of the dimensions of the exterior bearing pad shall be provided for each bearing pad location.
- A minimum 2 1/2" diameter lifting pin shall be used to engage the lifting loops during handling.
- Corrosion Inhibitor, per Article 1020.05(b)(12) and 1021.06 of the Standard Specifications, shall be used in the concrete for precast prestressed concrete deck beams.
- Compressive strength of prestressed concrete, f'c, shall be 6000 psi.
- Compressive strength of prestressed concrete at release, f'cl, shall be 5000 psi.

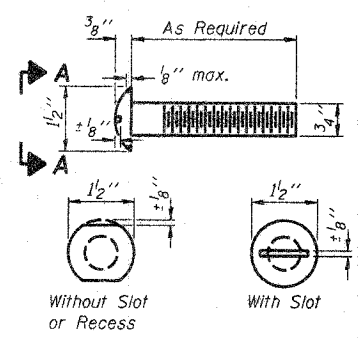
ESI CONSULTANTS, LTD
753 WINNEBAGO ROAD
CHARLESTON, IL 61920
(217) 348-1800
WWW.ESICONSULTANTS.LTD.COM
ILLINOIS DEPARTMENT OF PROFESSIONAL REGULATION REGISTRATION #184-003885

SUPERSTRUCTURE DETAILS
F.A.S. 1705
OVER TURKEY CREEK
SECTION 08-00110-00-BR
JASPER COUNTY
STATION 5+00

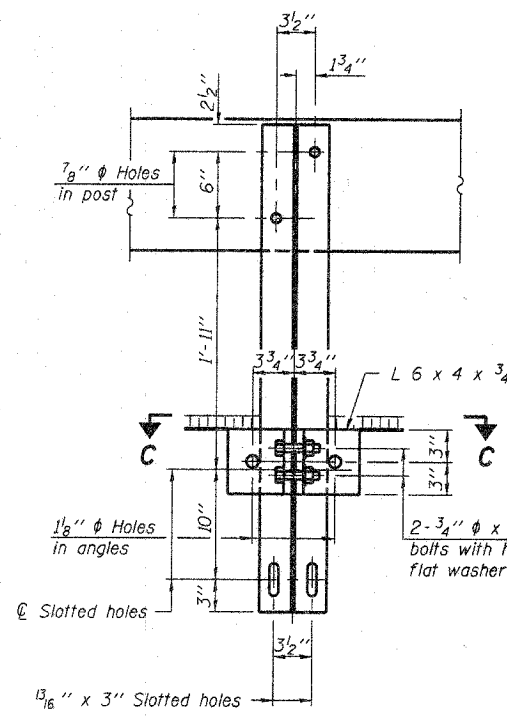
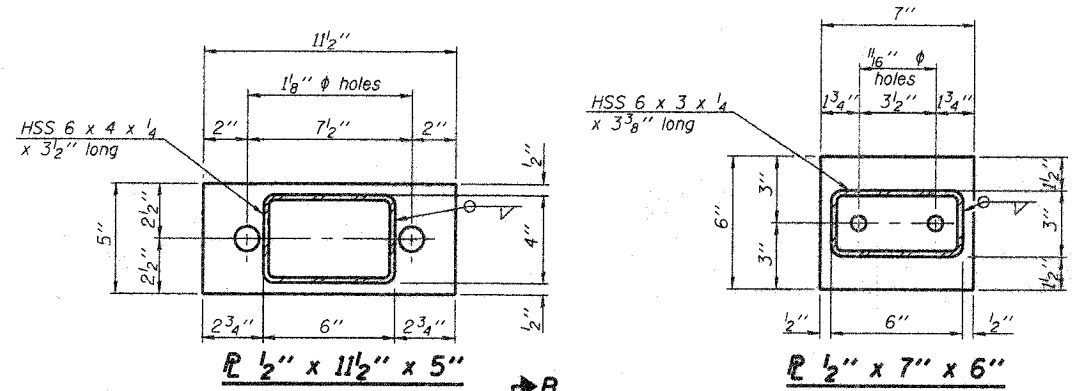
DATE: 05-07-08 DRAWN BY: ADG CHECKED BY: DF

ROUTE NO.	SECTION	COUNTY	DATE	SHEET	SHEET NO. 4 7 SHEETS
F.A.S. 1705	08-00110-00-BR	JASPER	15	8	
FED. ROAD DIST. NO. 7	ALWAYS	FED. AID PROJECT			

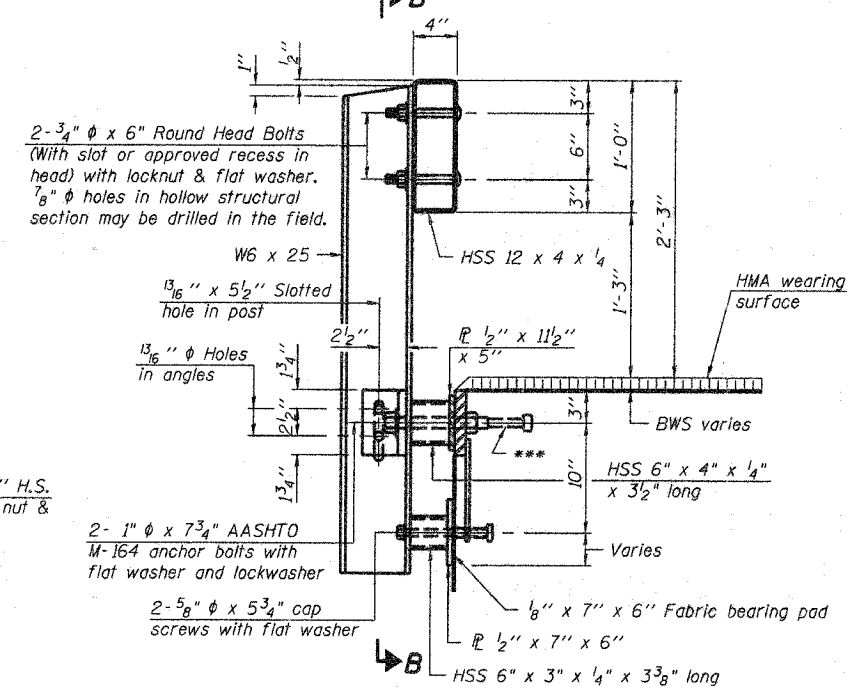
Contract # 95559



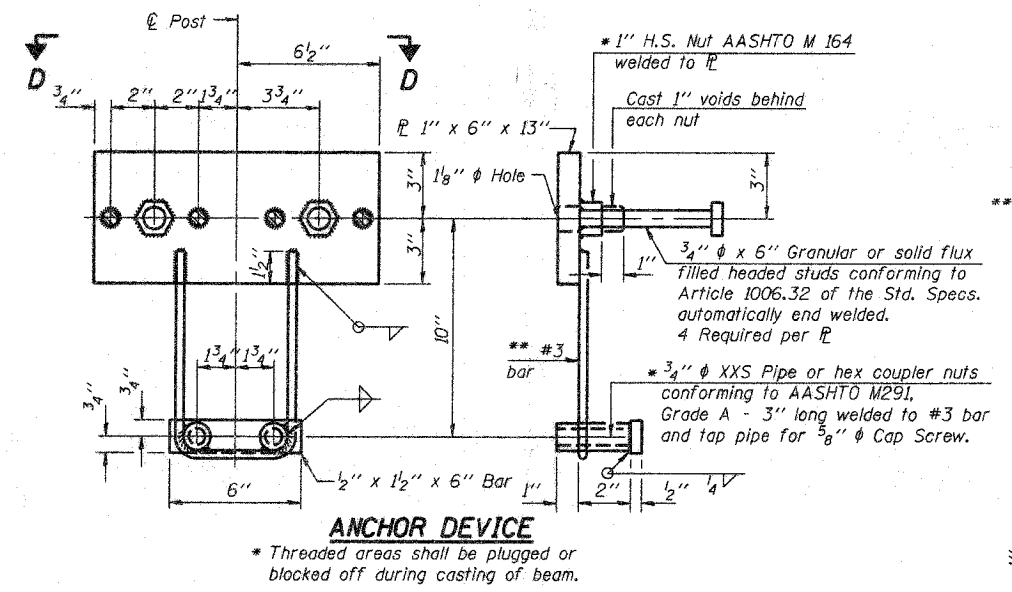
**VIEW A-A
ROUND HEAD BOLT**



SECTION B-B

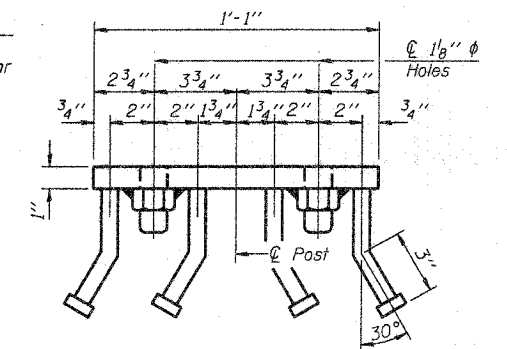


SECTION AT RAILING POST

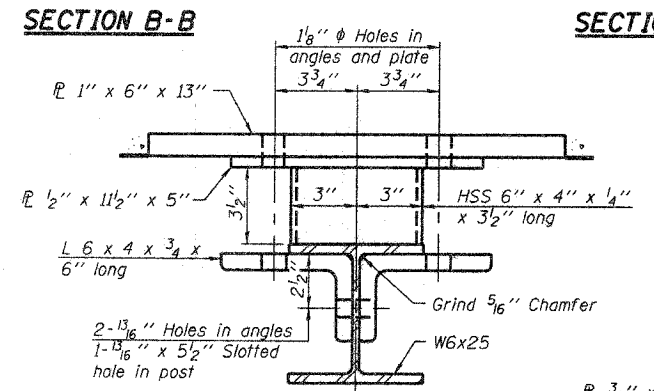


ANCHOR DEVICE

Notes:
 All field drilled holes shall be coated with an approved zinc rich paint before erection.
 For multi-span bridges, sufficient 1/4 inch x 6 inch x 1-2 inch galvanized steel shims shall be provided to align rail between adjacent spans. Cost included with Steel Railing, Type S-1.
 All steel rail elements shall be galvanized according to Article 509.05 of the Standard Specifications.
 *** The studs of the anchor devices shall be placed below the top reinforcement bars and the outermost longitudinal reinforcement bar shall be placed directly above the studs of the rail post anchor device.

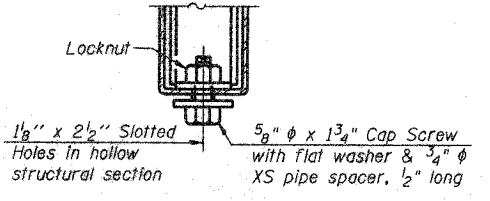


VIEW D-D

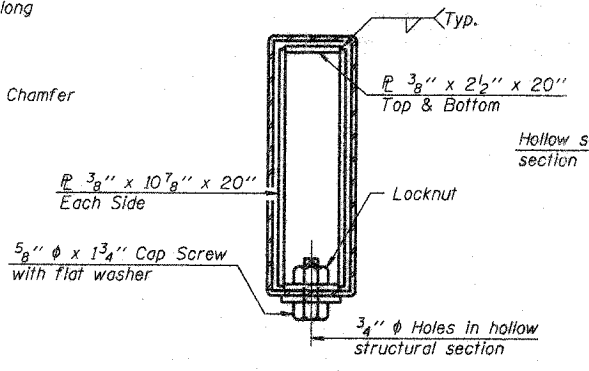


SECTION C-C

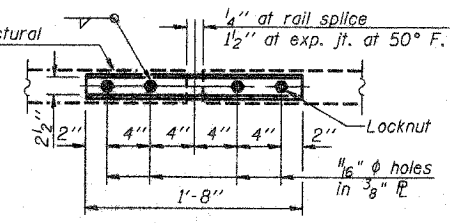
*** Whenever the lower insert assemblies interfere with strand locations, the #3 bars shall be cut and adjusted in order to allow raising or lowering of the lower inserts. Maximum adjustment not to exceed 1/2 inch.



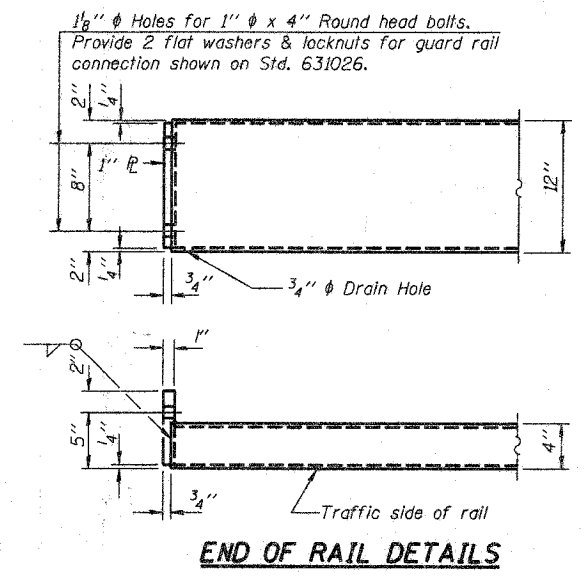
**RAIL SPLICE CONNECTION
AT EXPANSION JT.**



SECTIONS AT RAIL SPLICE



**PLAN-BOTT. SPLICE P
TYPICAL**



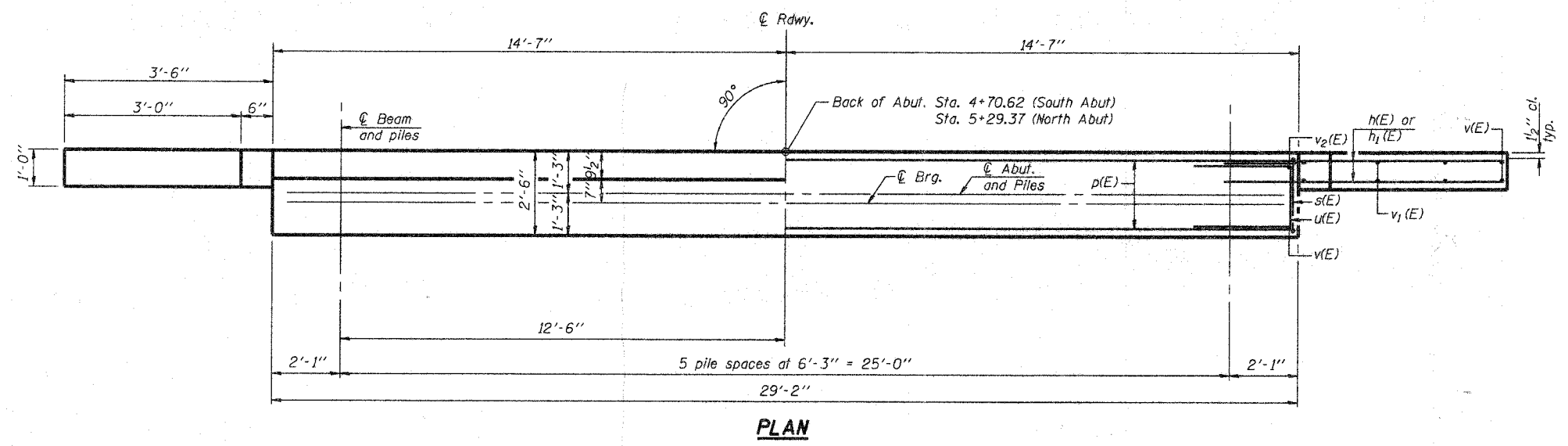
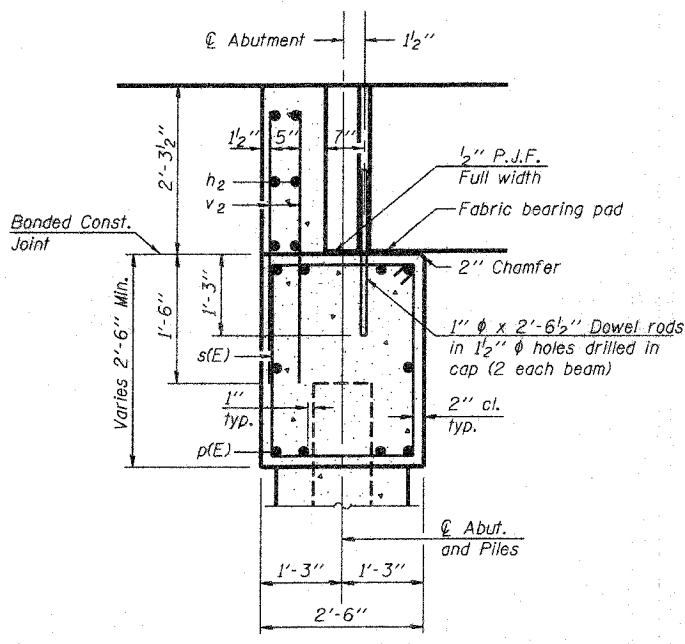
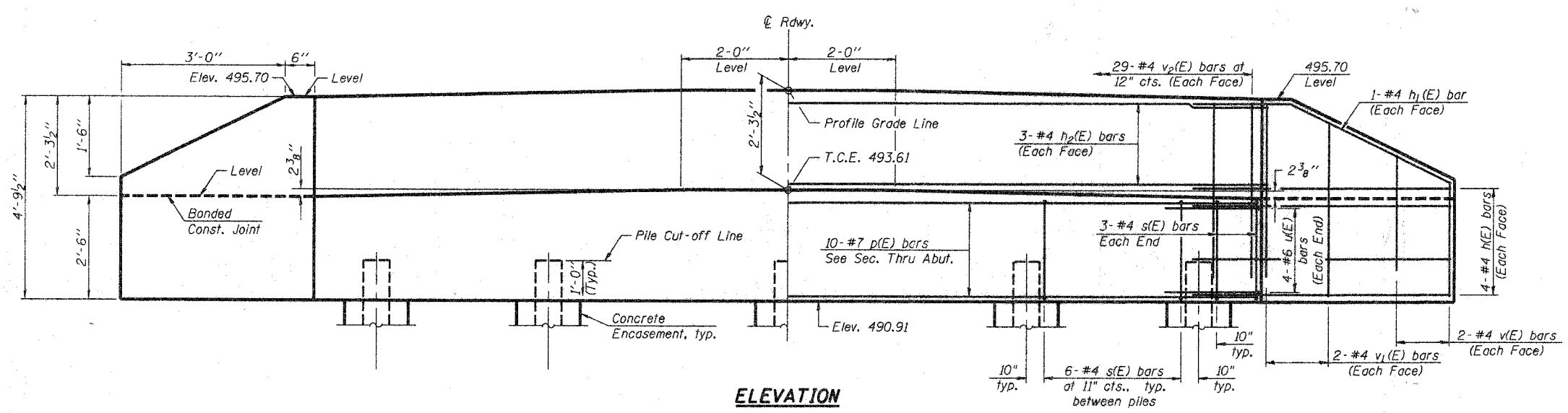
END OF RAIL DETAILS

BILL OF MATERIAL

Item	Unit	Quantity
Steel Railing, Type S-1	Foot	120

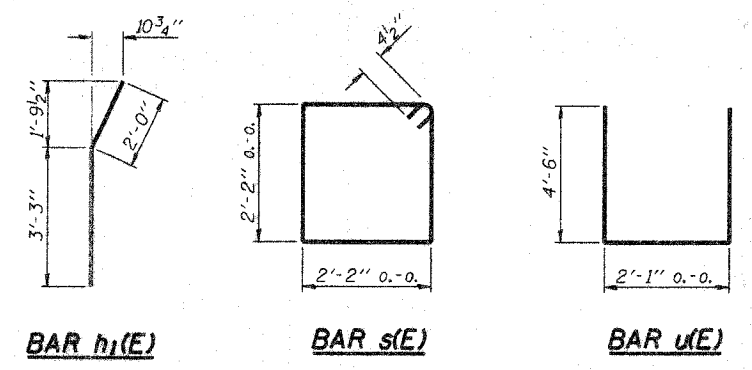
ESI CONSULTANTS, LTD
 753 WINDSOR ROAD
 CHARLESTON, IL 61920
 (217) 548-1800
 WWW.ESICONSULTANTS.LTD.COM
 ILLINOIS DEPARTMENT OF PROFESSIONAL REGULATION REGISTRATION #184-093885

STEEL RAILING, TYPE S-1
F.A.S. 1705
OVER TURKEY CREEK
SECTION 08-00110-00-BR
JASPER COUNTY
STATION 5+00



PILE DATA (2-ABUTS.)

Type	STEEL HP 10x42
Nominal Required Bearing	335 kips
Featured Resistance Available	167 kips
Estimated Pile Length	35 Feet North Abut. and 30 Feet South Abut.
Number of Production Piles	9
Number of Test Piles	1



Notes

The Backwall and the portion of the Wingwalls above the bonded construction joint shall be cast against the in-place beam.

Space reinforcement in cap to miss anchor bolts.

BILL OF MATERIAL
TWO ABUTMENTS

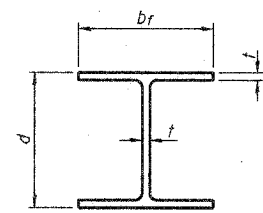
Bar No.	Size	Length	Shape
h ₁ (E)	#4	5'-0"	—
h ₂ (E)	#4	5'-3"	—
p(E)	#7	28'-10"	—
s(E)	#4	9'-5"	□
u(E)	#6	11'-1"	—
v(E)	#4	3'-2"	—
v ₁ (E)	#4	4'-2"	—
v ₂ (E)	#4	3'-11"	—
Structure Excavation	Cu. Yd.	80.9	
Concrete Structures	Cu. Yd.	20.8	
Reinforcement Bars, Epoxy Coated	Pound	2580	
Furnishing Steel Piles HP 10x42	Foot	295	
Driving Piles	Foot	295	
Concrete Encasement	Cu. Yd.	3.5	
Test Piles Steel HP 10x42	Each	1	

For details of piles and Concrete Encasement, see sheet 6 of 7.

ESI CONSULTANTS, LTD
 732 WINDSOR ROAD
 CHARLESTON, IL 61920
 (217) 345-1800
 WWW.ESICONSULTANTS.LTD.COM
 ILLINOIS DEPARTMENT OF PROFESSIONAL REGULATION REGISTRATION #164-033685

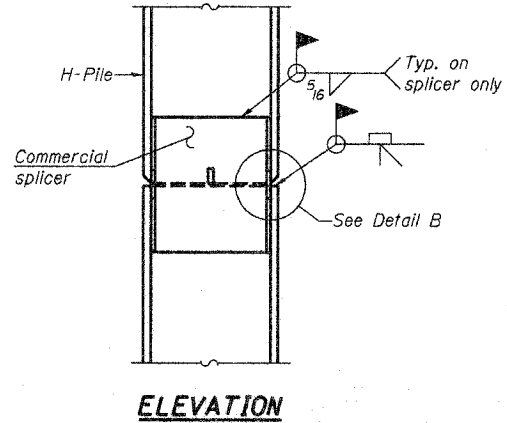
ABUTMENT DETAILS
 F.A.S. 1705
 OVER TURKEY CREEK
 SECTION 08-00110-00-BR
 JASPER COUNTY
 STATION 5+00

DATE: 05-07-08
 DRAWN BY: ADG
 CHECKED BY: DF

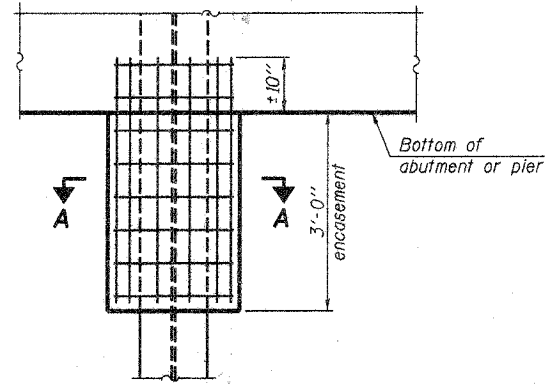


STEEL PILE TABLE

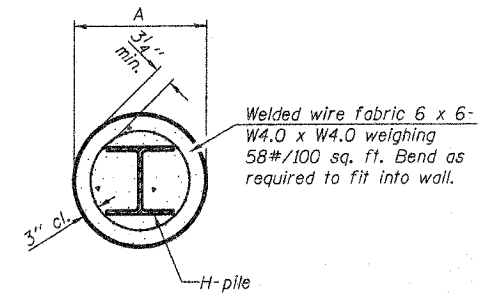
Designation	Depth d	Flange width br	Web and Flange thickness t	Encasement diameter A
HP 14x117	14 1/4"	14 7/8"	13/16"	30"
x102	14"	14 3/4"	1/16"	30"
x89	13 7/8"	14 3/4"	5/8"	30"
x73	13 5/8"	14 5/8"	1/2"	30"
HP 12x84	12 1/4"	12 1/4"	1/16"	24"
x74	12 1/2"	12 1/4"	5/8"	24"
x63	12"	12 1/8"	1/2"	24"
x53	11 3/4"	12"	7/16"	24"
HP 10x57	10"	10 1/4"	9/16"	24"
x42	9 3/4"	10 1/8"	7/16"	24"
HP 8x36	8"	8 1/8"	7/16"	18"



ELEVATION



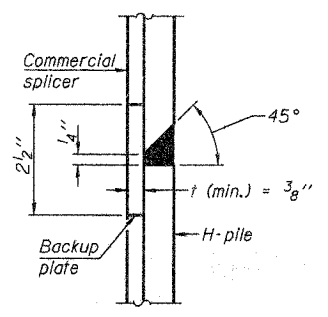
ELEVATION



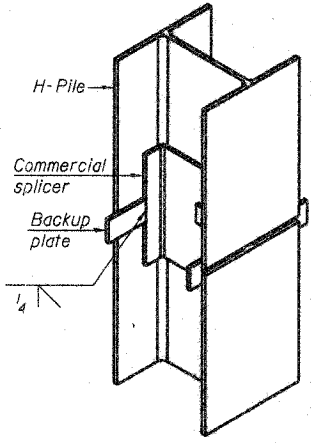
SECTION A-A

Note: Forms for encasement may be omitted when soil conditions permit.

PILE ENCASUREMENT

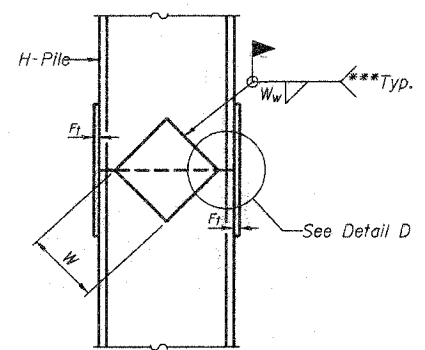


DETAIL "B"

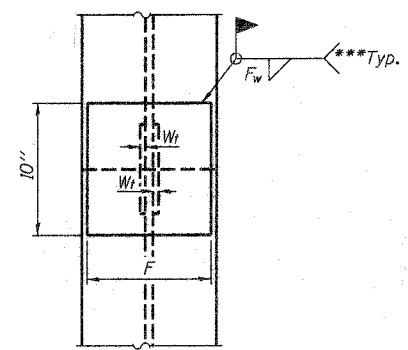


ISOMETRIC VIEW

WELDED COMMERCIAL SPLICE

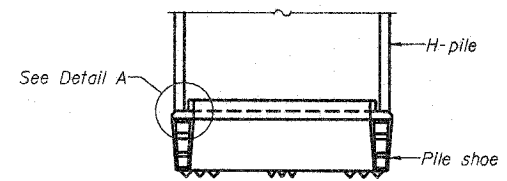


ELEVATION

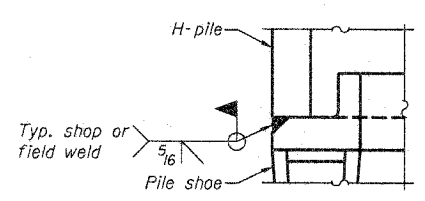


END VIEW

Designation	F	F _t	F _w	W	W _t	W _w
HP 14x117	12 1/2"	1"	7/8"	7 3/4"	5 1/2"	1 1/2"
x102	12 1/2"	7/8"	3/4"	7 3/4"	5 1/2"	1 1/2"
x89	12 1/2"	3/4"	1/16"	7 3/4"	5 1/2"	1 1/2"
x73	12 1/2"	5/8"	9/16"	7 3/4"	5 1/2"	1 1/2"
HP 12x84	10"	7/8"	1/16"	6 1/2"	5 1/2"	1 1/2"
x74	10"	7/8"	1/16"	6 1/2"	5 1/2"	1 1/2"
x63	10"	5/8"	1/2"	6 1/2"	1 1/2"	3/8"
x53	10"	5/8"	1/2"	6 1/2"	1 1/2"	3/8"
HP 10x57	8"	3/4"	9/16"	5 1/4"	1 1/2"	3/8"
x42	8"	5/8"	9/16"	5 1/4"	1 1/2"	3/8"
HP 8x36	7"	5/8"	7/16"	4 1/4"	1 1/2"	3/8"

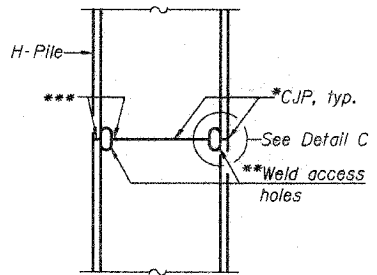


ELEVATION

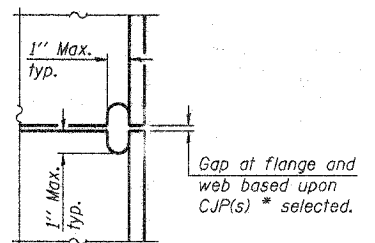


DETAIL A

H-PILE SHOE ATTACHMENT

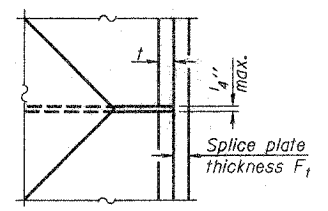


ELEVATION



DETAIL C

COMPLETE PENETRATION WELD SPLICE



DETAIL D

WELDED PLATE FIELD SPLICE

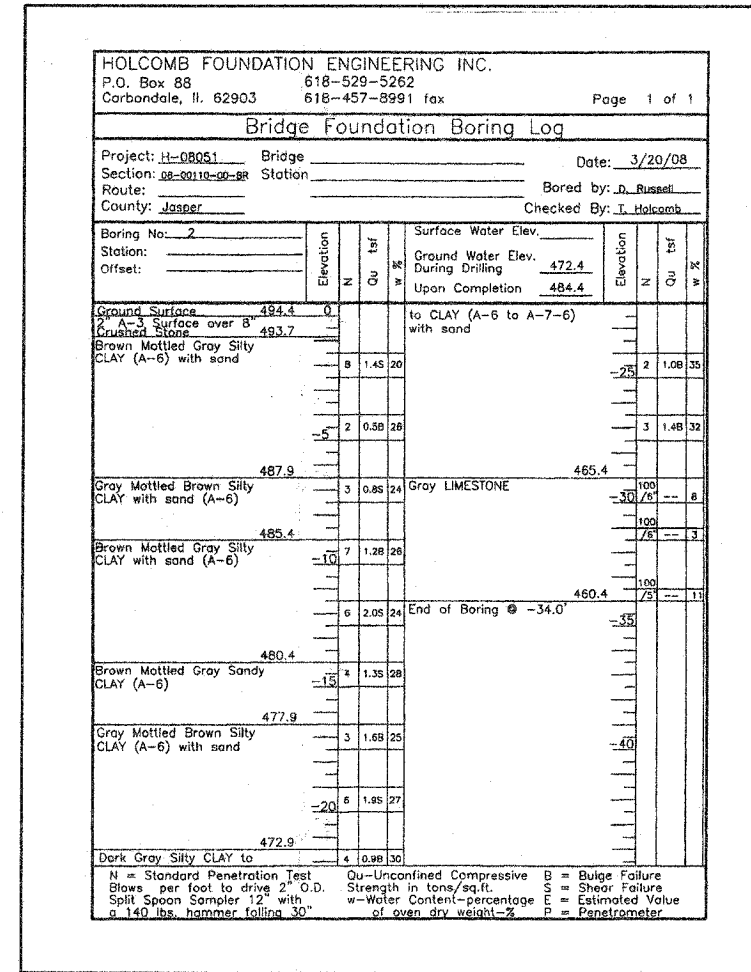
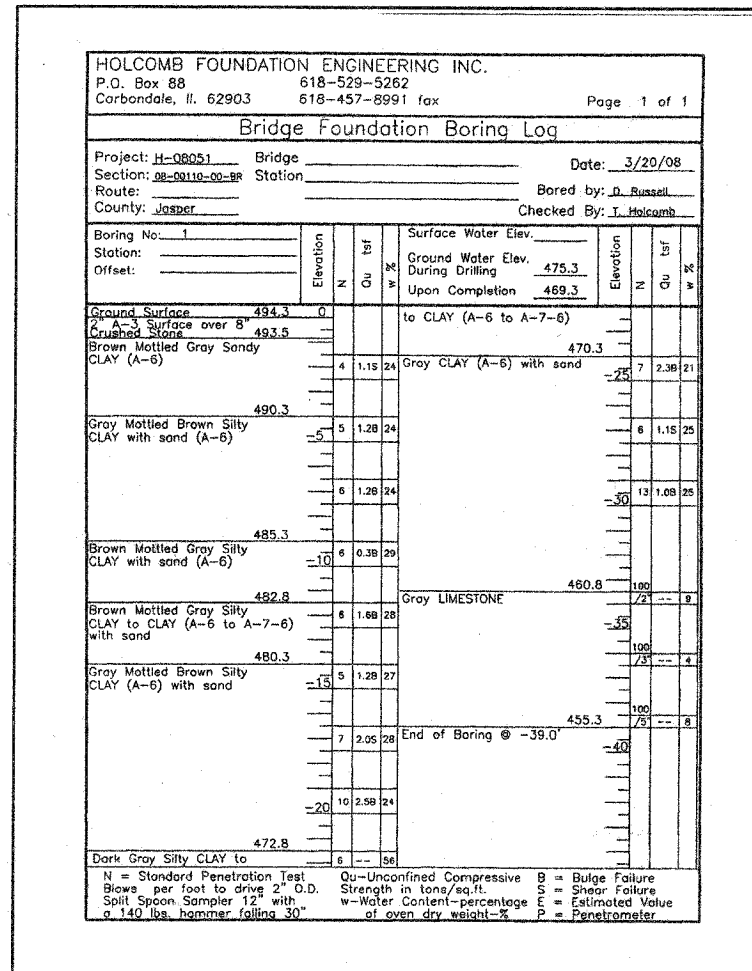
*Use joint conforming to Figure 3.4 in AWS D1.1, Structure Welding Code - Steel.
 **Preparation per Fig. 5.2 in AWS D1.1, Structure Welding Code - Steel.
 ***Interrupt welds 1/4" from end of each pile.

Note: The steel H-piles shall be according to AASHTO M270 Grade 50.

ESI CONSULTANTS, LTD
 783 WINDSOR ROAD
 CHARLESTON, IL 61920
 (217) 348-1590
 WWW.ESICONSULTANTS.LTD.COM
 ILLINOIS DEPARTMENT OF PROFESSIONAL REGULATION REGISTRATION #164-005865

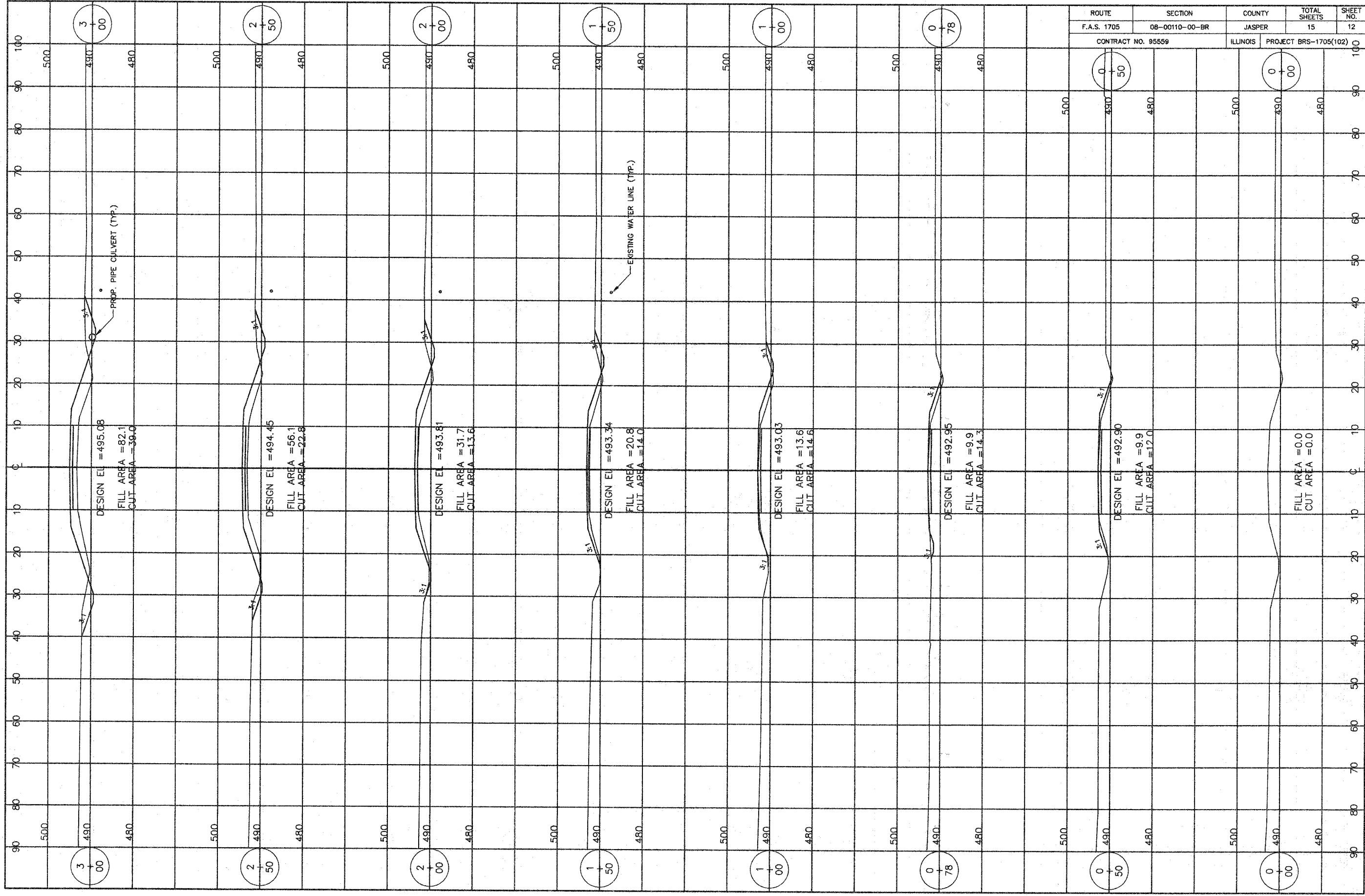
PILE DETAILS
 F.A.S. 1705
 OVER TURKEY CREEK
 SECTION 08-00110-00-BR
 JASPER COUNTY
 STATION 5+00

DATE: 05-07-08 DRAWN BY: ADG CHECKED BY: DF

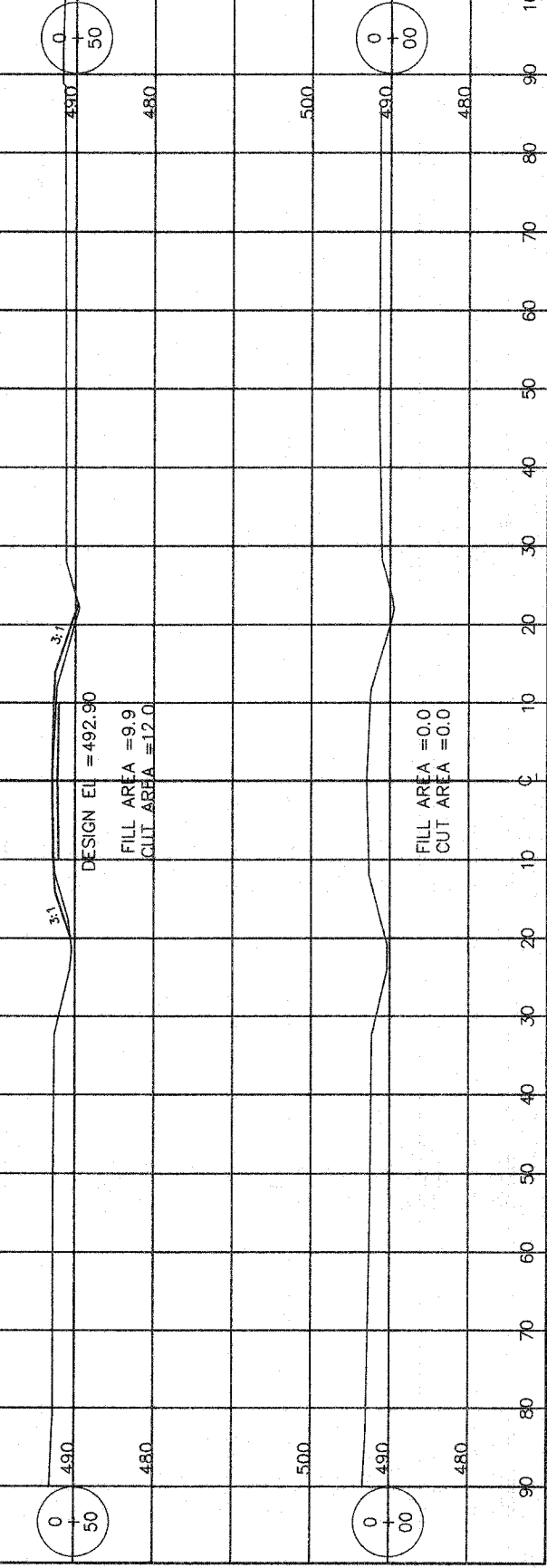


ESI ESI CONSULTANTS, LTD
753 WINDSOR ROAD
CHARLESTON, IL 61820
(217) 348-1900
WWW.ESICONSULTANTS.LTD.COM
ILLINOIS DEPARTMENT OF PROFESSIONAL REGULATION REGISTRATION #184-003885

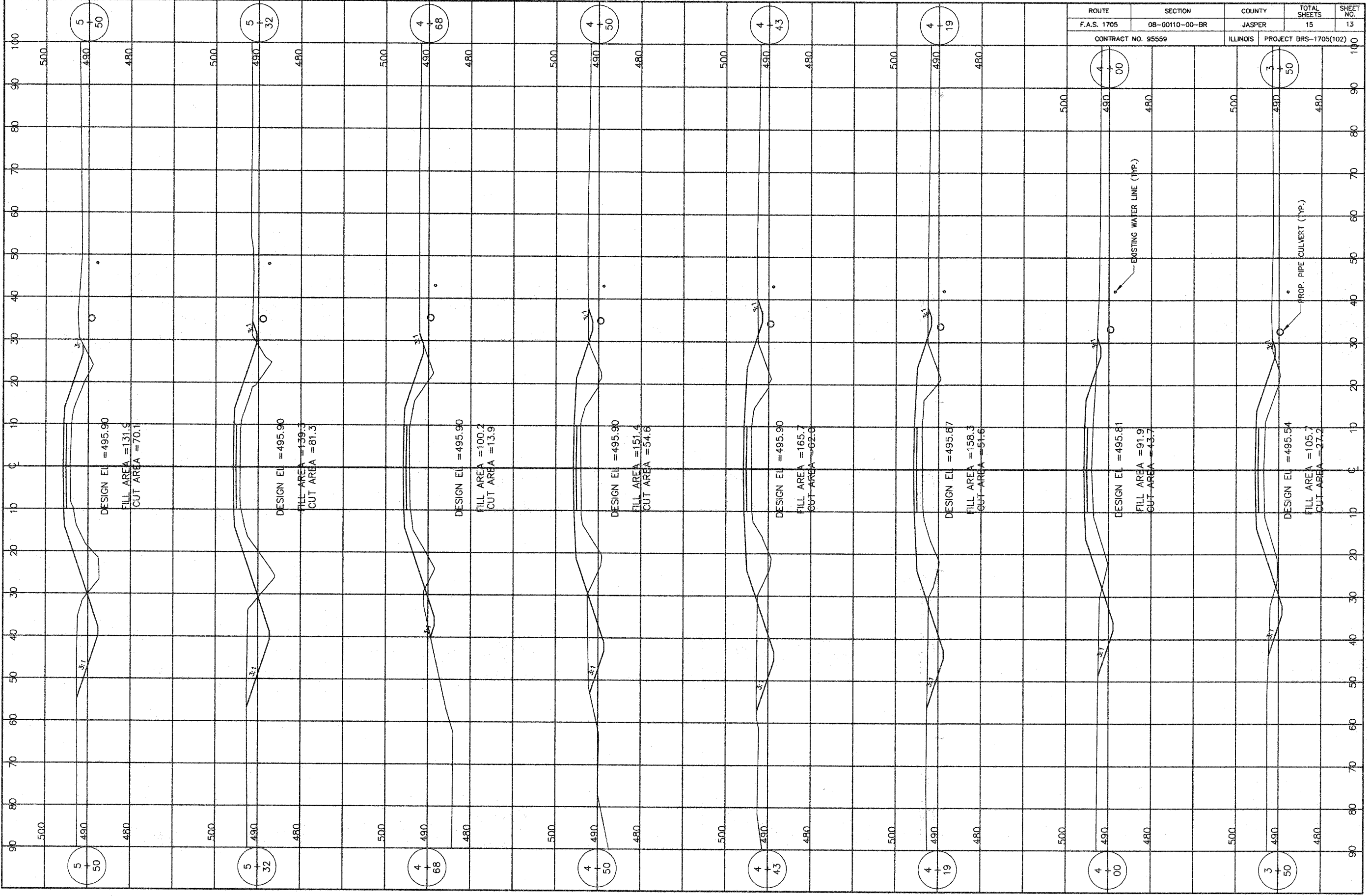
BORING LOGS
F.A.S. 1705
OVER TURKEY CREEK
SECTION 08-00110-00-BR
JASPER COUNTY
STATION 5+00 DRAWN BY: ADG
DATE: 05-07-08 CHECKED BY: DF

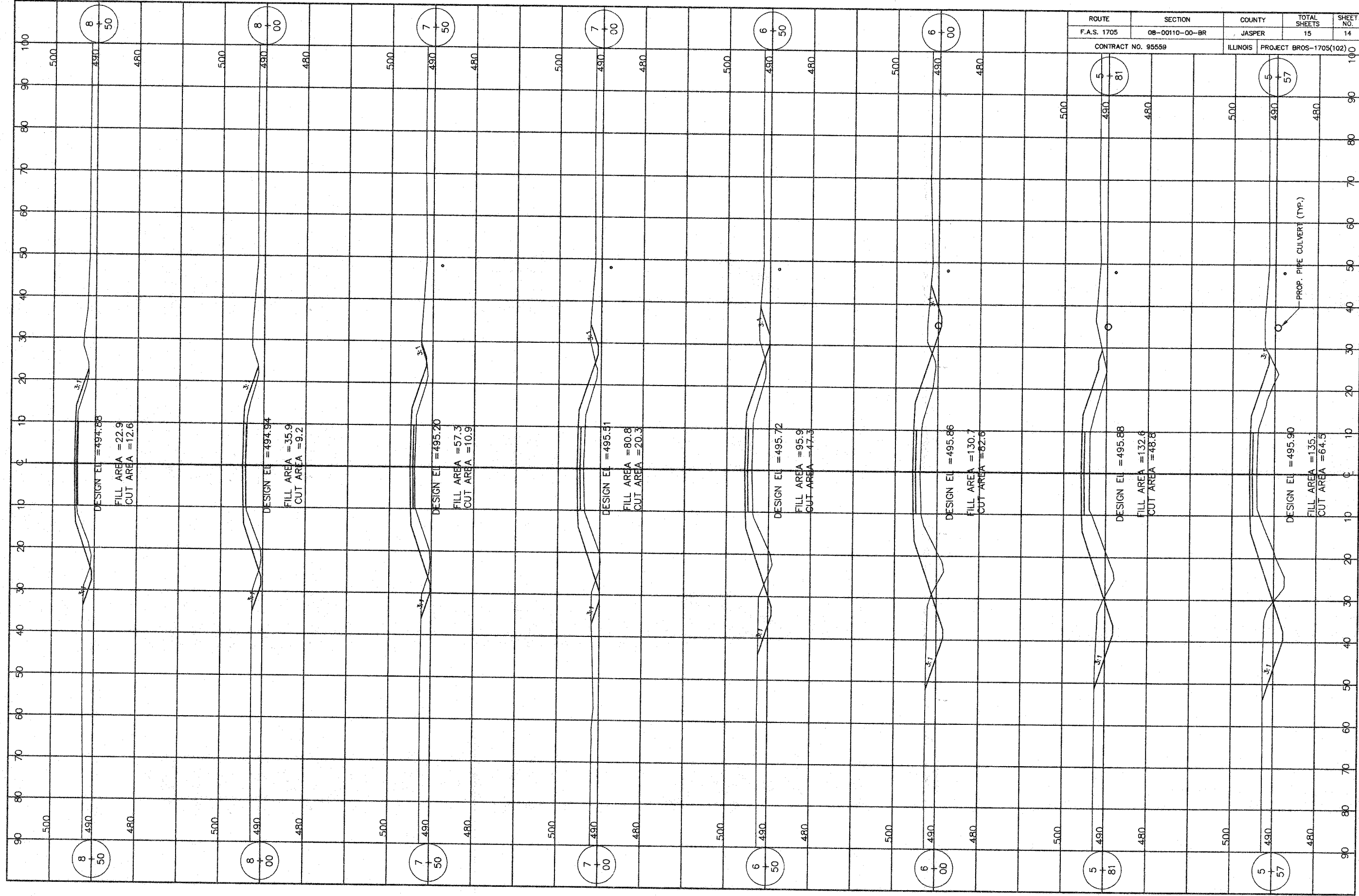


ROUTE	SECTION	COUNTY	TOTAL SHEETS	SHEET NO.
F.A.S. 1705	08-00110-00-BR	JASPER	15	12
CONTRACT NO. 95559		ILLINOIS	PROJECT BRS-1705(102)	

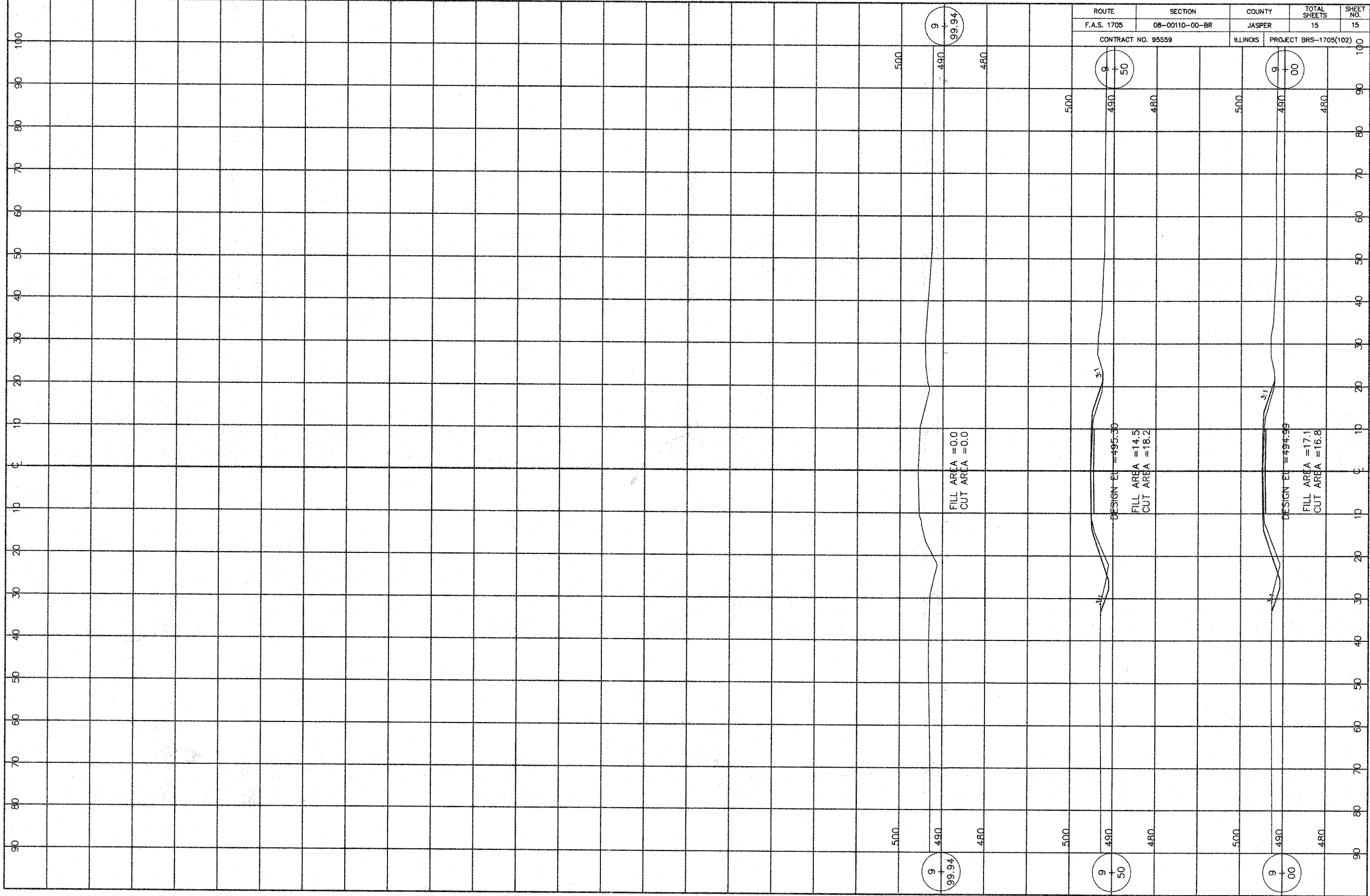


ROUTE	SECTION	COUNTY	TOTAL SHEETS	SHEET NO.
F.A.S. 1705	08-00110-00-BR	JASPER	15	13
CONTRACT NO. 95559		ILLINOIS	PROJECT BRS-1705(102)	





ROUTE	SECTION	COUNTY	TOTAL SHEETS	SHEET NO.
F.A.S. 1705	08-00110-00-BR	JASPER	15	14
CONTRACT NO. 95559		ILLINOIS	PROJECT BROS-1705(102)	



ROUTE	SECTION	COUNTY	TOTAL SHEETS	SHEET NO.
F.A.S. 1705	08-00110-00-BR	JASPER	15	15
CONTRACT NO. 95559		ILLINOIS	PROJECT BRS-1705(102)	

9
+
99.94

9
+
50

9
+
00

FILL AREA = 0.0
CUT AREA = 0.0

DESIGN EL = 494.99
FILL AREA = 14.5
CUT AREA = 18.2

DESIGN EL = 494.99
FILL AREA = 17.1
CUT AREA = 16.8

9
+
99.94

9
+
50

9
+
00