

REVISIONS  
A, DOT REVISIONS 07-17-2008

NO.	DESCRIPTION	DATE

**HORNER & SHIFRIN, INC.**  
**ENGINEERS**  
3200 OAKLAND AVE., ST. LOUIS, MO 63110-1490  
314-531-4331 • FAX 314-531-6966  
www.HornerShifrin.com

ALTON, ILLINOIS  
PEDESTRIAN OVERPASS AT LANGDON ST.

DWG. NO. PEDESTRIAN P-P ALT #1 DWG  
REF. BK 5000 PG 1  
JOB NO. 406024  
DSN. BY: JAB  
DWN. BY: JAB  
CHK. BY: JAB  
DATE: 03/26/08

SCALE: 1" = 20'  
SHEET 18 OF 54

### LIGHT FIXTURE SCHEDULE

MARK	MANUFACTURER	CATALOG	#	LAMP TYPE	FINISH	MOUNTING	REMARKS
SA	Antique Street Lamps	SLC1 BC13L 100M MACS 277 ANBK TYPE V DISTRIBUTION	1	100W MH	Black	Ground	TYPE V DISTRIBUTION
SB*	AMP	200QCL GUPRTO 32WPL-E22 (3") 277V (SEE DETAIL)	1	F3ZPL	Black	Post	See Detail
SC	Kim	AFL16 100MH 277 BLP HDS PHBLP WM2 WEB BLP	1	100W MH	Black	Wall	

\* EQUIVALENT FIXTURES AS MANUFACTURED BY "BASELIGHT & SPERO" WILL BE ACCEPTABLE UPON APPROVAL OF SPECIFIC MODEL NUMBER BY ENGINEER.

PANELBOARD MP (EXISTING) VOLTS 277/480		MOUNTED EXTERIOR PHASE/WIRE 3/4					LOCATION PARKING LOT MANS 400A MCB					AMPB 400						
LOAD	LIGHT	LOAD, KW	REC	O/M	OCF	A	P	CIR	A	P	OCF	A	P	OCF	LOAD, KW	REC	LIGHT	LOAD
Parking Lot (Existing)					40	3	1	A	2	3	40						Parking Lot (Existing)	
								3	B	4								
								5	C	6								
Parking Lot (Existing)					40	3	7	A	6	3	60						XFMR	
								9	B	10								
								12	A	14								
								15	B	16								
								17	C	18								
								19	A	20								
								21	B	22								
SUB-TOTAL, CL, KW 0.00 0.00 0.00																		
* ADD NEW 100 AMP THREE POLE BREAKER TO EXISTING SIEMENS PANEL																		

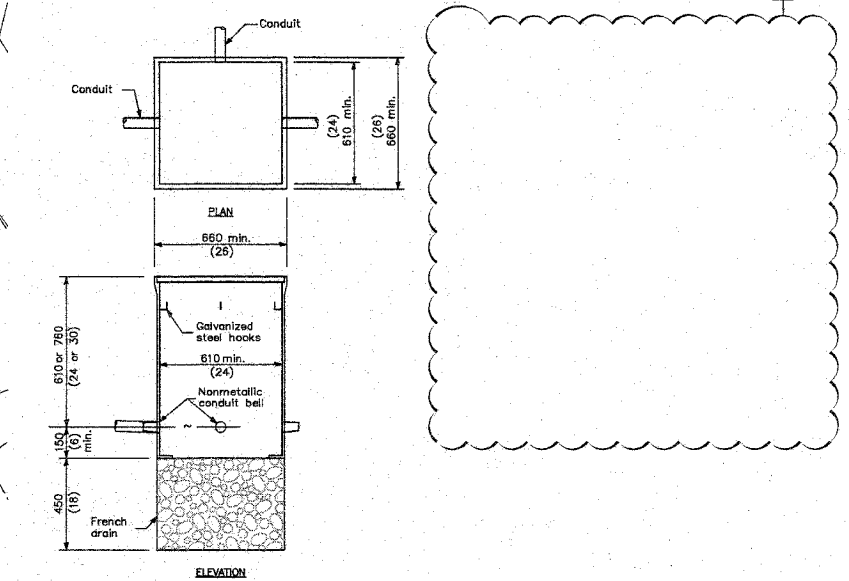
### KEYED NOTES (THIS SHEET ONLY):

- 1 SEE "IN-SIDEWALK" BASE DETAIL. LEAVE 4" CLEARANCE BETWEEN BASE EDGE AND CHEEK WALL.
- 2 BASE DEPTH SHALL BE 18" DEEP TO AVOID PENETRATING LEVEE SOIL.
- 3 ROUTE CONDUIT BELOW CONCRETE TO AVOID PENETRATING LEVEE SOIL.
- 4 EXISTING PANEL MP, ADD (1) 100 AMP, THREE POLE BREAKER TO EXISTING 277/480 VOLT THREE PHASE PANEL.
- 5 EXISTING 120/208 VOLT PANEL.
- 6 BASE MOUNTED RELAY CONTROLLER.
- 7 SEE "NEXT TO SIDEWALK BASE" DETAIL.
- 8 EXISTING EQUIPMENT.

- ELECTRIC ENGINEERING SYMBOLS
- ⊙ WALL MOUNTED FIXTURE
  - ⊙ BOLLARD
  - CONDUIT CONCEALED IN FLOOR/BELOW SLAB/BELOW GRADE
  - ||||| WIRE IN CONDUIT LEFT TO RIGHT 1 GROUND, 1 NEUTRAL, 3 HOTS
  - ⊞ HAND HOLE
  - ▩ PANELBOARD - WALL MOUNTED
  - ⊞ ELECTRIC METER
  - ⊞ BASE MOUNTED CONTROLLER
  - ① KEYED NOTE

### GENERAL NOTE:

- ALL CONDUCTORS SHALL BE #8 AWG.
- DO NOT PENETRATE EXISTING LEVEE SOIL FOR INSTALLATION FIXTURES & CONDUITS.



COMPOSITE CONCRETE HANDHOLE  
NO SCALE

Revised 7-18-08

### PEDESTRIAN OVERPASS LIGHTING - AREA "A"

SCALE: 1" = 20'-0"

