

REVISIONS

NO.	DATE	DESCRIPTION
1	07-17-08	ISSUED FOR BIDDING

**HORNER & SHIFRIN, INC.**  
ENGINEERS  
3200 OAKLAND AVE., ST. LOUIS, MO 63110-1490  
314-531-4331 • FAX 314-531-6966  
www.HornerShifrin.com

ALTON, ILLINOIS  
PEDESTRIAN OVERPASS AT LANGDON ST.

DWG. NO. PEDESTRIAN P-P ALT # DWG  
REV. BK 5000 PG 1  
JOB NO. 406924  
DSN. BY: JAB  
DWN. BY: JAB  
CHK. BY: JAB  
DATE: 03/28/08  
SCALE: 1" = 20'  
SHEET 18 OF 54

**LIGHT FIXTURE SCHEDULE**

MARK	MANUFACTURER	CATALOG	LAMPS	FINISH	MOUNTING	REMARKS
SA	Antique Street Lamps	SLE1 BC13L 100M MACS 277 ANBK TYPE V DISTRIBUTION	1 100W MH	Black	Ground	TYPE V DISTRIBUTION
SB*	AMP	200QCL GUPRTO 32WPL-E22 (3") 277V (SEE DETAIL)	1 F3ZPL	Black	Post	See Detail
SC	Kim	AFL16 100MH 277 BLP HDS FHBLP WM2 WEB BLP	1 100W MH	Black	Wall	

\* EQUIVALENT FIXTURES AS MANUFACTURED BY "BASELIGHT & SPERO" WILL BE ACCEPTABLE UPON APPROVAL OF SPECIFIC MODEL NUMBER BY ENGINEER.

PANELBOARD MP (EXISTING)		MOUNTED EXTERIOR PHASE/WIRE #/4				LOCATION PARKING LOT MAINS 400A MCB				AMPB 400			
LOAD		LOAD, KW	O/M	OCF	CIR	CIR	OCF	LOAD, KW	O/M	OCF	LOAD		
Parking Lot (Existing)			40	3	1	A 2	3	40			Parking Lot (Existing)		
					3	B 4							
					5	C 6							
Parking Lot (Existing)			40	3	7	A 8	3	60			XFRM		
					9	B 10							
					12								
Pedestrian Walk Controller		100	3	10	A 14						Space		
					15	B 16					Space		
					17	C 18					Space		
Space					19	A 20					Space		
Space					21	B 22					Space		
SUB-TOTAL, CL, KW		0.00	0.00	0.00				0.00	0.00	0.00	SUB-TOTAL, CL, KW		

\* ADD NEW 100 AMP THREE POLE BREAKER TO EXISTING SIEMENS PANEL.

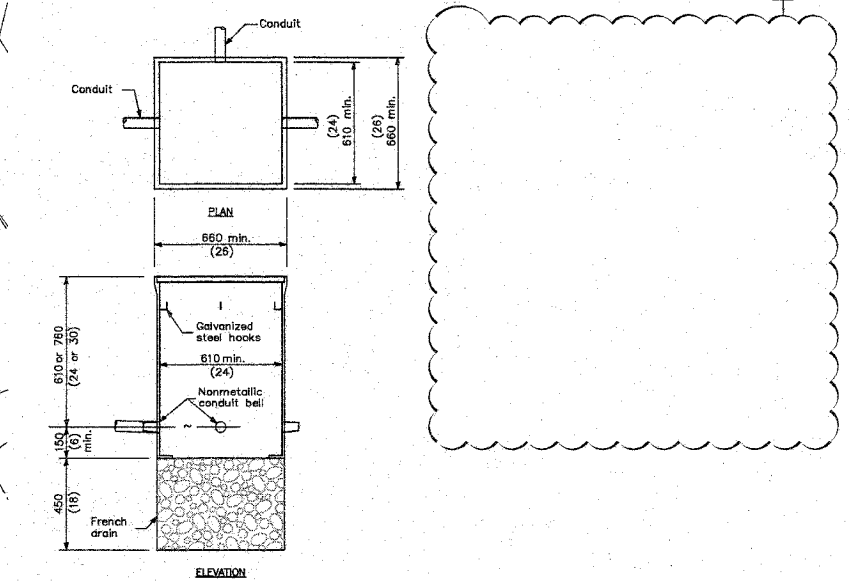
**KEYED NOTES (THIS SHEET ONLY):**

- SEE "IN-SIDEWALK" BASE DETAIL. LEAVE 4" CLEARANCE BETWEEN BASE EDGE AND CHEEK WALL.
- BASE DEPTH SHALL BE 18" DEEP TO AVOID PENETRATING LEVEE SOIL.
- ROUTE CONDUIT BELOW CONCRETE TO AVOID PENETRATING LEVEE SOIL.
- EXISTING PANEL MP, ADD (1) 100 AMP, THREE POLE BREAKER TO EXISTING 277/480 VOLT THREE PHASE PANEL.
- EXISTING 120/208 VOLT PANEL.
- BASE MOUNTED RELAY CONTROLLER.
- SEE "NEXT TO SIDEWALK BASE" DETAIL.
- EXISTING EQUIPMENT.

- ELECTRIC ENGINEERING SYMBOLS**
- ⊙ WALL MOUNTED FIXTURE
  - ⊙ BOLLARD
  - CONDUIT CONCEALED IN FLOOR/BELOW SLAB/BELOW GRADE
  - ||||| WIRE IN CONDUIT LEFT TO RIGHT 1 GROUND, 1 NEUTRAL, 3 HOTS
  - ⊞ HAND HOLE
  - ▭ PANELBOARD - WALL MOUNTED
  - ⊞ ELECTRIC METER
  - ⊞ BASE MOUNTED CONTROLLER
  - ① KEYED NOTE

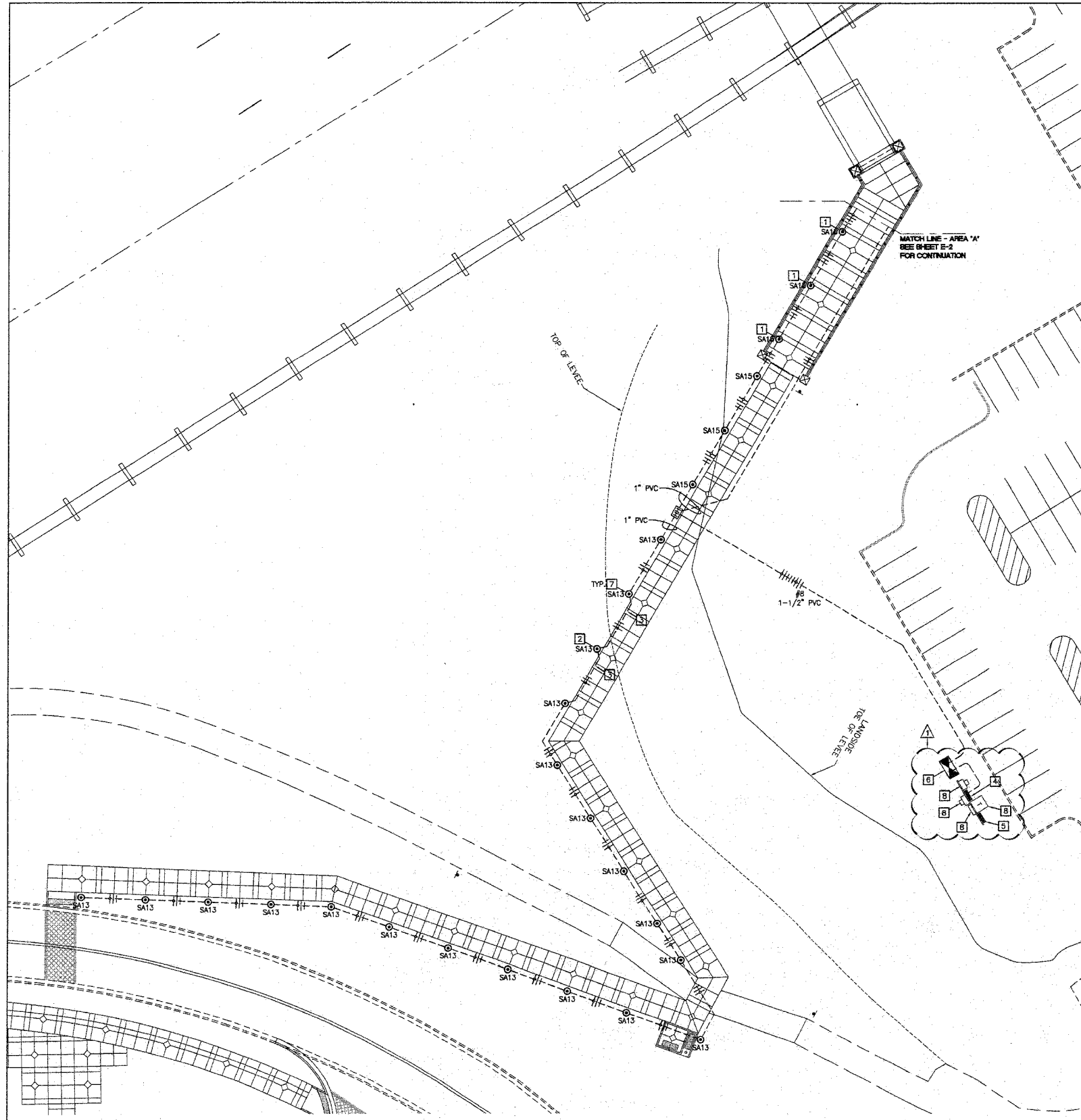
**GENERAL NOTE:**

- ALL CONDUCTORS SHALL BE #8 AWG.
- DO NOT PENETRATE EXISTING LEVEE SOIL FOR INSTALLATION FIXTURES & CONDUITS.

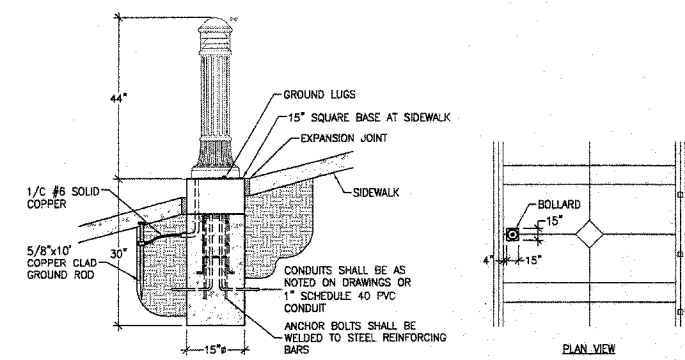
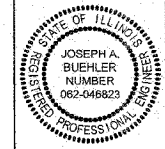


**COMPOSITE CONCRETE HANDHOLE**  
NO SCALE

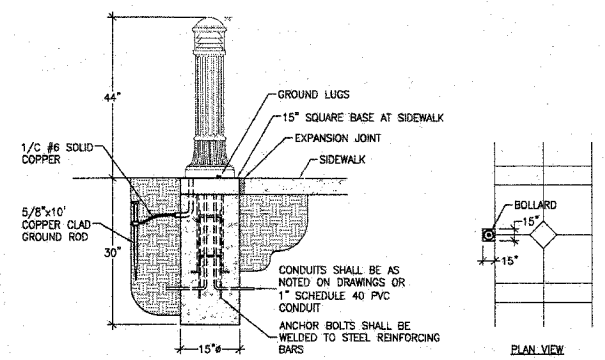
Revised 7-18-08



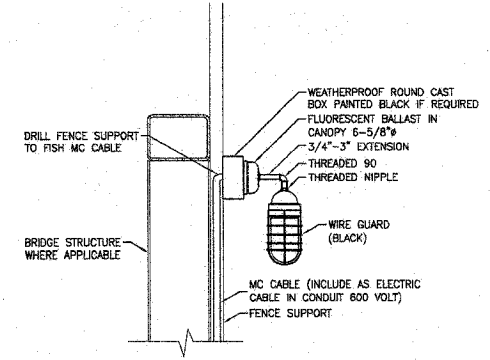
**PEDESTRIAN OVERPASS LIGHTING - AREA "A"**  
SCALE: 1" = 20'-0"



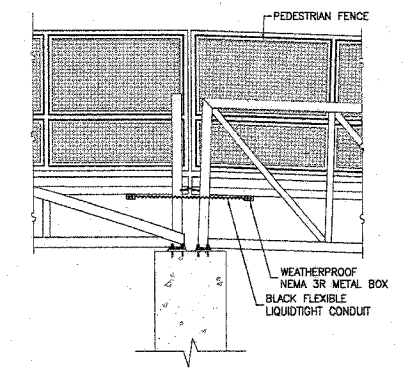
**FIXTURE SA 'IN SIDEWALK' MOUNTING DETAIL**  
NO SCALE



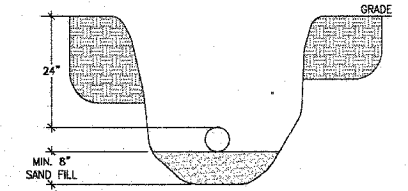
**FIXTURE SA 'NEXT TO SIDEWALK' MOUNTING DETAIL**  
NO SCALE



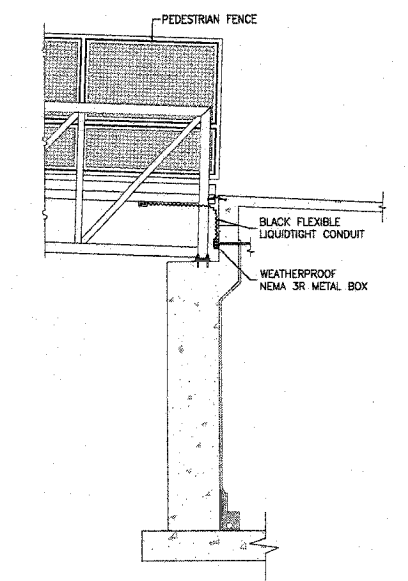
**FIXTURE SB DETAIL**  
NO SCALE



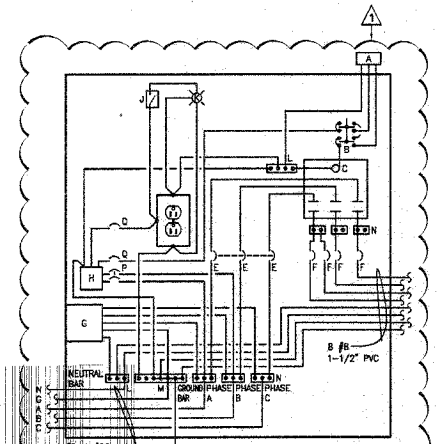
**PIER CONDUIT DETAIL**  
NO SCALE



**TYPICAL CONDUIT BURIAL DETAIL**  
NO SCALE  
DO NOT PENETRATE LEVEL FOR INSTALLATION. ALL CONDUIT INSTALLED IN FILL IF LESS THAN 24" BURIAL INSTALL 2" CONCRETE COVER.



**ABUTMENT CONDUIT DETAIL**  
NO SCALE

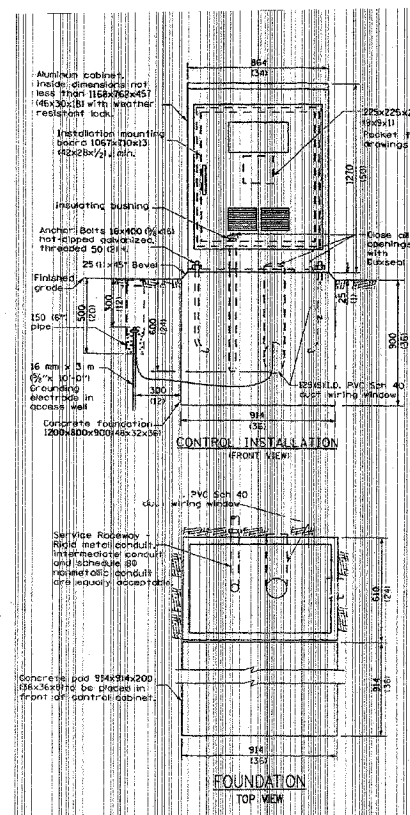


**MATERIALS:**

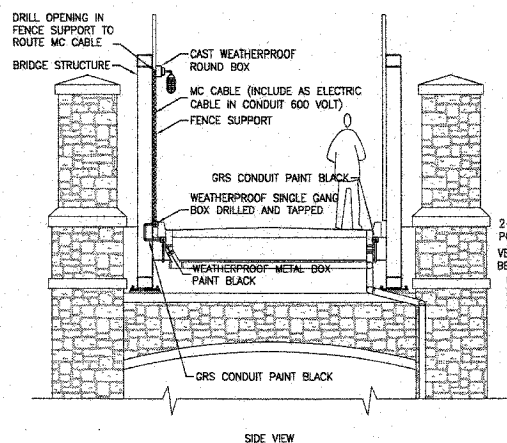
- A. PHOTOCELL W/ INTEGRAL SURGE ARRESTER.
- B. THREE POSITION SELECTOR SWITCH HAND/OFF/AUTO.
- C. 100 AMP ELECTRICALLY HELD CONTACTOR, 120 VOLT OPERATING COIL.
- D. 15 AMP SINGLE POLE CIRCUIT BREAKER.
- E. 100 AMP 3 POLE MAIN CIRCUIT BREAKER, 480 VOLT.
- F. 20 AMP SINGLE POLE BRANCH CIRCUIT BREAKER (TYP.) SPARE C.B. REQUIRED BUT NOT SHOWN, 480 VOLT.
- G. SURGE ARRESTER WITH DISC FUSED.
- H. TRANSFORMER (SEE NOTES) 1 KVA, 240/480 VOLT PRIMARY, 120/240 VOLT SECONDARY, SINGLE PHASE.
- I. GFCI DUPLEX RECEPTACLE.
- J. SINGLE POLE, SINGLE THROW SWITCH.
- K. SHIELDED SECURITY FIXTURE WITH 100W LAMP.
- L. NEUTRAL BAR.
- M. EQUIPMENT GROUND BAR.
- N. TERMINAL BLOCK (TYP.)
- O. 20 AMP, 2 POLE BREAKER, 480 VOLT.
- P. 20 AMP, SINGLE POLE BREAKER, 120 VOLT.

**GENERAL NOTES:**

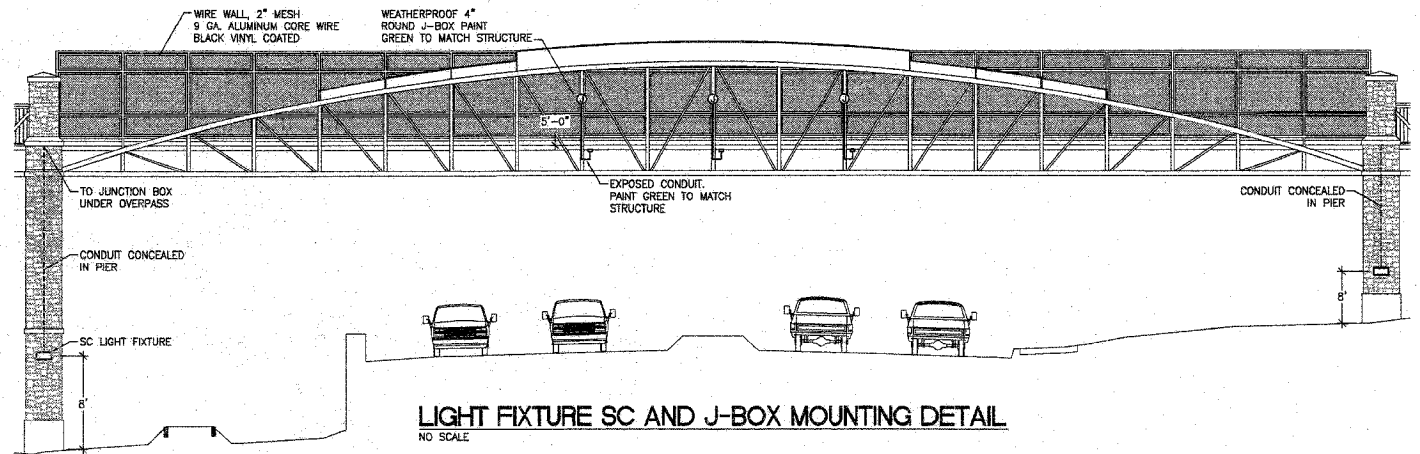
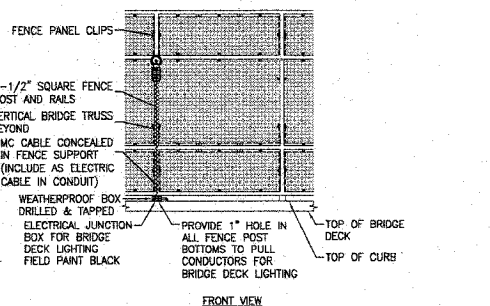
1. WIRING SHALL BE PANEL BOARD FASHION. ALL BENDS SHALL BE RIGHT ANGLES. ALL RUNS SHALL BE VERTICAL OR PARALLEL TO PANEL BOARD. WIRES SHALL BE GROUPED OR LACED.
2. ALL CONTROL INSTALLATION COMPONENTS SHALL BE U.L. LISTED.
3. RACEWAYS SHALL TERMINATE 75 (3) ABOVE TOP OF CONCRETE FOUNDATION.
4. LABEL EQUIPMENT GROUND BUSS AND NEUTRAL BUSS.
5. ALL DIMENSIONS ARE IN MILLIMETERS (INCHES) UNLESS OTHERWISE SHOWN.



**BASE MOUNTED RELAY CONTROLLER**  
NO SCALE



**FIXTURE SB BRANCH CIRCUIT DETAIL**  
NO SCALE



**LIGHT FIXTURE SC AND J-BOX MOUNTING DETAIL**  
NO SCALE

Revised 7-18-08

REVISIONS  
DATE REVISIONS BY

**HORNER & SHIFRIN, INC.**  
ENGINEERS  
5200 OAKLAND AVE. • ST. LOUIS, MO 63110-1490  
314-531-4371 • FAX 314-531-6966  
www.HornerShifrin.com

ALTON, ILLINOIS  
PEDESTRIAN OVERPASS AT LANGDON ST.

DWG. NO.	E3
PEDESTRIAN P-P ALT #1 DWG	
REF. BK 5080 PG	1
JOB NO.	406924
DES. BY:	JAB
DWN. BY:	JAB
CHK. BY:	JAB
DATE:	03/28/08
SCALE:	N/A
SHEET	20 OF 54