

T.R. RTE.	SECTION	COUNTY	TOTAL SHEETS	SHEET NO.
77	05-09111-00-BR	JERSEY	10	1
FED. ROAD DIST. NO. ILLINOIS FED. AID PROJECT			CONTRACT NO. 97344	

STATE OF ILLINOIS
DEPARTMENT OF TRANSPORTATION
**PLANS FOR PROPOSED
HIGHWAY BRIDGE PROGRAM**

PROJECT NO. BROS-0083(040)

T.R. 77 OVER STREAM
SECTION 05-09111-00-BR

RICHWOOD TOWNSHIP
JERSEY COUNTY

JOB NO. C-98-357-06

INDEX OF SHEETS

- 1 - TITLE SHEET
- 2 - SUMMARY OF QUANTITIES, DETAILS, TYPICAL SECTIONS & GENERAL NOTES
- 3 - PLAN & PROFILE
- 4 - GENERAL PLAN & ELEVATION
- 5 - SUPERSTRUCTURE
- 6 - RAILING
- 7 - ABUTMENTS
- 8-10 - CROSS SECTIONS

STANDARDS

STANDARD 515001-02
STANDARD 701901
STANDARD BLR 21-7

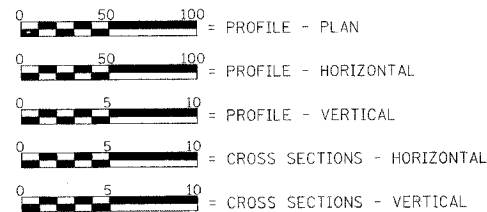
LIST OF UTILITIES

Frontier Communications
225 N. Broad Street
Carlinville, Illinois 62626
1-217-854-4013

M.J.M. Electric Cooperative, Inc.
P.O. Box 80
Carlinville, Illinois 62626
1-217-854-3137

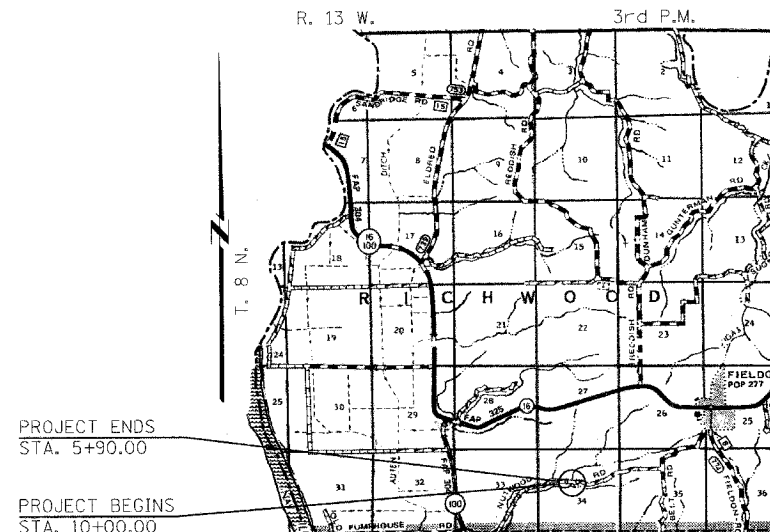
Jersey County Rural Water
1009 E. Shipman Road
Jerseyville, Illinois 62052
1-618-498-9534

SCALE IN FEET



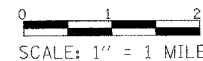
TOWNSHIP - RICHWOOD
LAND SECTION - 34
LAND QUARTER SECTION - N.W.
FUNCTIONAL CLASSIFICATION: LOCAL ROAD (NON-URBAN)
A.D.T. - 100 (2002)
A.D.T. - 180 (2023)
30 M.P.H. DESIGN SPEED

TOLL FREE
"JOINT UTILITY LOCATION INFORMATION FOR EXCAVATORS"
(J.U.L.I.E.) TELEPHONE NUMBER
1-800-892-0123



LOCATION PLAN

LENGTH OF SECTION - 410.00 FEET = 0.078 MILES



EXISTING STRUCTURE:
SINGLE SPAN POURED CONCRETE DECK
BRIDGE FOUNDED ON CLOSED CONCRETE
ABUTMENTS. ±18'-9" OUT.-OUT. DECK,
±22'-0" BK.-BK. ABUTMENTS. CONCRETE
RAILING. 0° SKEW.
EXISTING STRUCTURE NO. 042-3062.

PROPOSED STRUCTURE:
SINGLE SPAN PRECAST CONCRETE DECK
BEAM (21") BRIDGE ON OPEN CONCRETE
ABUTMENTS. 24'-0" OUT.-OUT. DECK,
49'-0" BK.-BK. ABUTMENTS. STEEL
RAILING TYPE S-1. 0° SKEW.
PROPOSED STRUCTURE NO. 042-3145.



Christopher P. Hollman 3/27/08
EXPIRATION: 11/30/2009

APPROVED 3/25, 2008
Keith Deering
TOWNSHIP HIGHWAY COMMISSIONER

APPROVED 3/24, 2008
Thomas E. Hollman
COUNTY ENGINEER

PASSED 4/9, 2008
[Signature]
DISTRICT EIGHT ENGINEER OF
LOCAL ROADS & STREETS

Releasing For
Bid Based on
Limited Review 4/9, 2008
[Signature]
DEPUTY DIRECTOR OF HIGHWAYS,
REGION FIVE ENGINEER

STATE OF ILLINOIS
DEPARTMENT OF TRANSPORTATION

FILE NAME	USER NAME - #USER#	DESIGNED	REVISED	<p>Allen Henderson & Associates, Inc. Civil and Structural Engineers Springfield, IL 62703 Phone: (217)544-8033 IL Design Firm No. 184-001907</p>	<p style="text-align: center;">TITLE SHEET</p> <p>SCALE: 1" = 1 MILE SHEET NO. 1 OF 10 SHEETS STA. 5+90.00 TO STA. 10+00.00</p>	T.R. RTE.	SECTION	COUNTY	TOTAL SHEETS	SHEET NO.
REF ID #	PLOT SCALE - #SCALE#	DRAWN	REVISED			77	05-09111-00-BR	JERSEY	10	1
	PLOT DATE - #DATE#	CHECKED	REVISED			CONTRACT NO. 97344				
		DATE	REVISED			FED. ROAD DIST. NO. ILLINOIS FED. AID PROJECT				