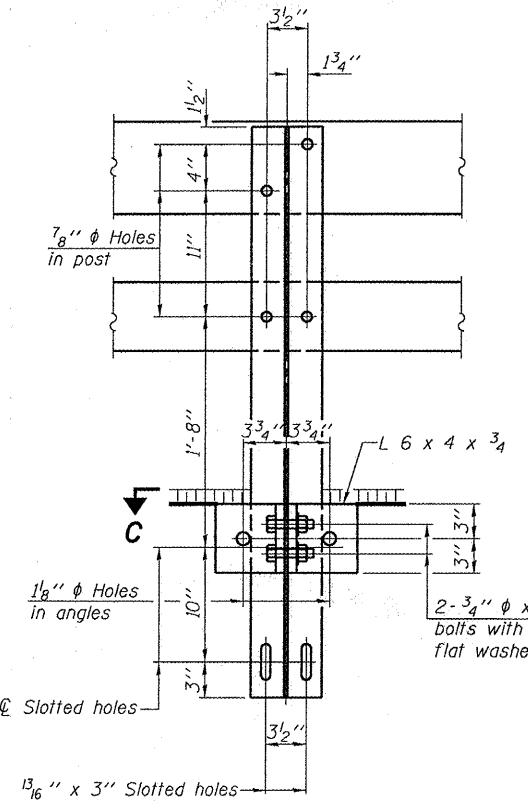
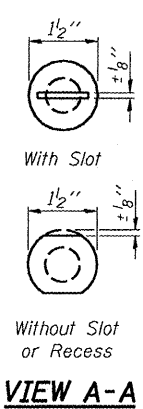
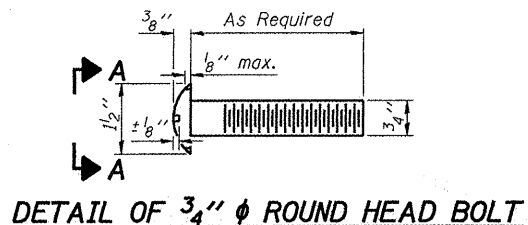
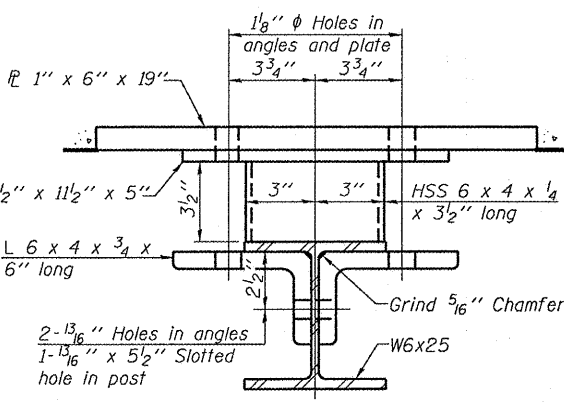


STATE OF ILLINOIS  
DEPARTMENT OF TRANSPORTATION

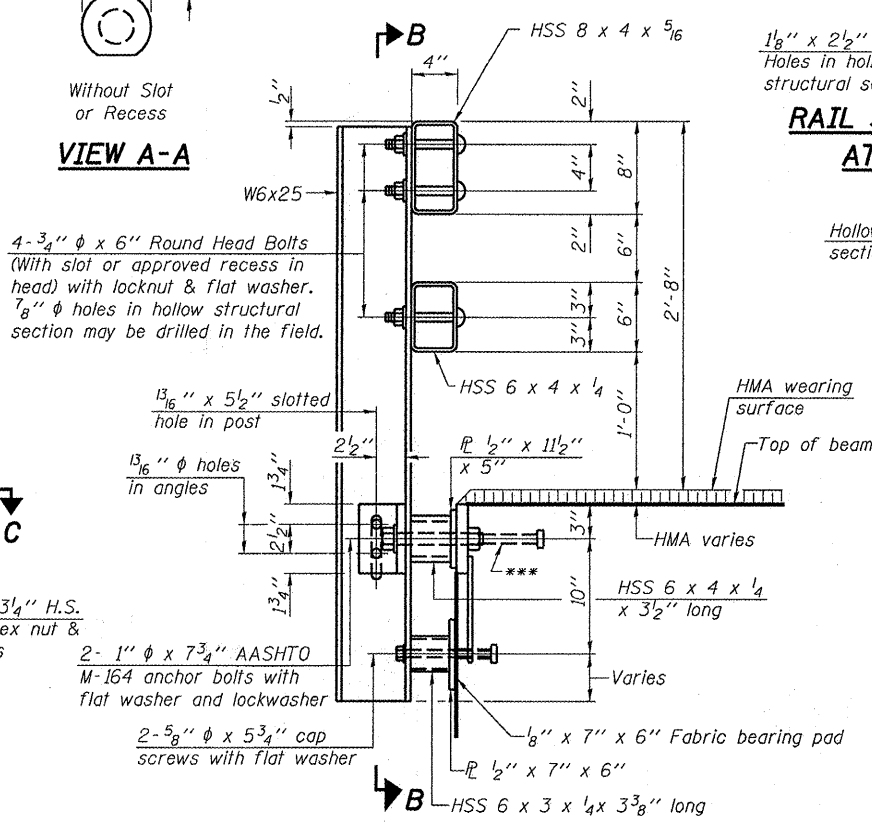
ROUTE NO.	SECTION	COUNTY	TOTAL SHEETS	SHEET NO.	SHEET NO. 10 14 SHEETS
F.A.S. 863	*	RANDOLPH			
FED. ROAD DIST. NO. 7	ILLINOIS	FED. AID PROJECT			
* 06-00039-05-BR					



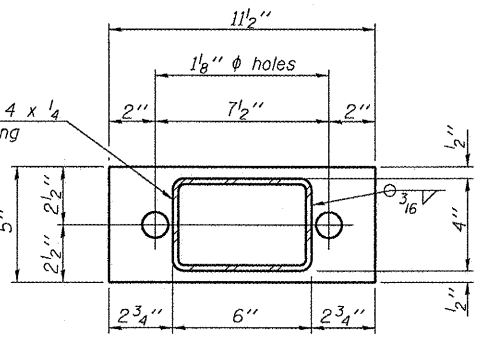
SECTION B-B



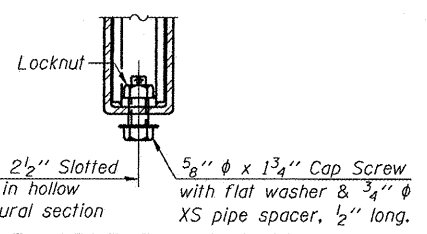
SECTION C-C



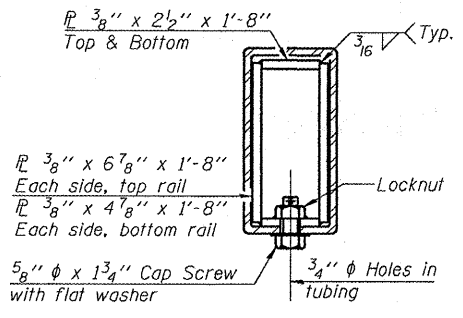
SECTION AT RAIL POST



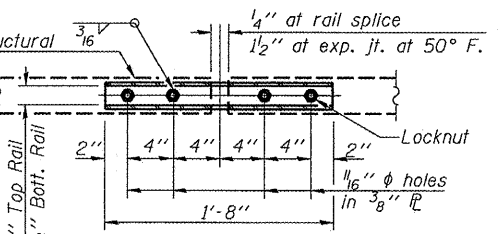
PLAN-BOTT. SPLICE P  
TYPICAL



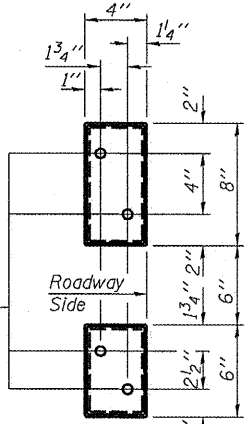
RAIL SPLICE CONNECTION  
AT EXPANSION JT.



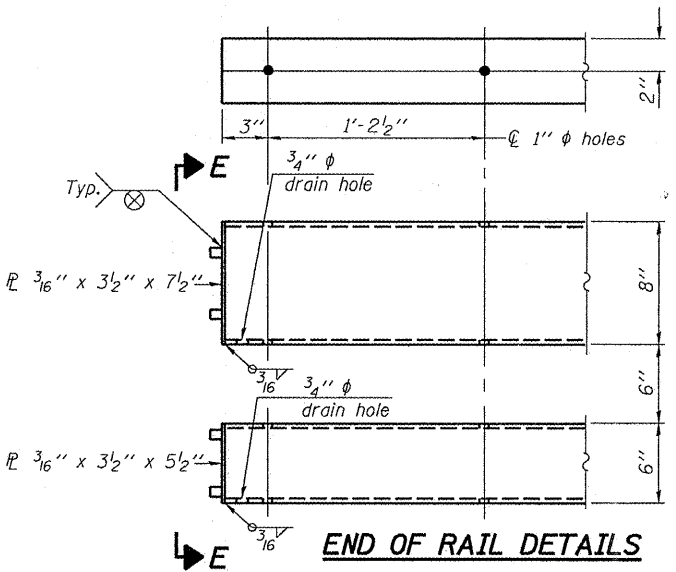
SECTION AT  
RAIL SPLICE



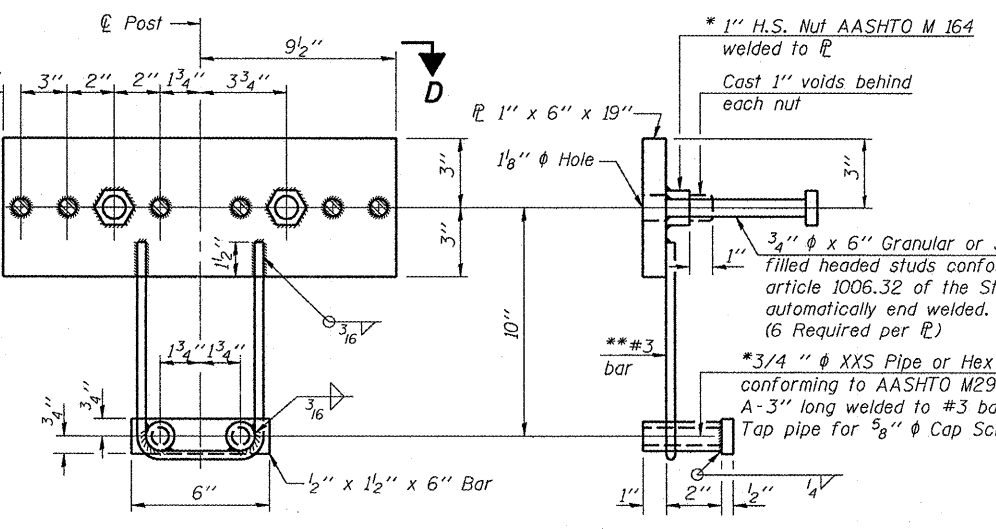
VIEW D-D



VIEW E-E



END OF RAIL DETAILS



ANCHOR DEVICE

Notes:  
All field drilled holes shall be coated with an approved zinc rich paint before erection.  
For multi-span bridges, sufficient 1/4" x 6" x 1'-2" galvanized steel shims shall be provided to align rail between adjacent spans. Cost included with Steel Railing, Type SM.  
All steel rail members shall be galvanized according to Article 509.05 of the Standard Specifications.  
\*\*\*The studs of the anchor devices shall be placed below the top reinforcement bars and the outermost longitudinal reinforcement bar shall be placed directly above the studs of the rail post anchor device.

BILL OF MATERIAL

Item	Unit	Quantity
Steel Railing, Type SM	Foot	180

STEEL RAILING, TYPE SM  
WITH HOT-MIX ASPHALT  
WEARING SURFACE  
STR. NO. 079-3195  
F.A.S. ROUTE 863 OVER  
COX CREEK DRAIN DITCH  
SECTION 06-00039-05-BR  
RANDOLPH COUNTY  
STA. 47+16.90

DESIGNED	MJT
CHECKED	JSB
DRAWN	SMS
CHECKED	JSB

May 1, 2008  
EXAMINED *Carl Perry*  
ENGINEER OF STRUCTURAL SERVICES  
PASSED *Ralph E. Anderson*  
ENGINEER OF BRIDGES AND STRUCTURES

\*Threaded areas shall be plugged or blocked off during casting of beam. Galvanized after fabrication.

\*\*Whenever the lower insert assemblies interfere with strand locations, the #3 bars shall be cut and adjusted in order to allow raising or lowering of the lower inserts. Maximum adjustment not to exceed 1/2".