

ROUTE	SECTION	COUNTY	TOT. SHTS.	SHT.
FAS 824	07-00194-00-RS	JEFFERSON	2	1
JEFFERSON COUNTY ROAD DISTRICT				

CONTRACT # 99334

INDEX OF SHEETS

- COVER SHEET, LOCATION MAP
- GENERAL NOTES, TYPICAL EXISTING AND PROPOSED CROSS-SECTIONS, SUMMARY OF QUANTITIES, BITUMINOUS MIXTURE BREAKDOWN, STRIPING, DETAILS OF SIDE ROADS, PRIVATE ENTRANCES, AND MAILBOX TURN-OUTS

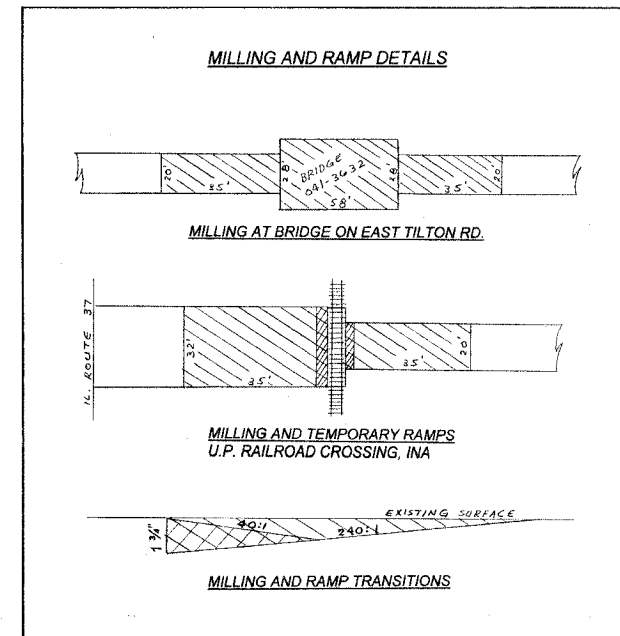
STANDARDS

- 000001-05
- 442201-03
- 701006-02
- 701306-01
- 701311-02
- 701336-04
- 701901
- 780001-01
- B.L.R. 21-7
- B.L.R. 22-5

STATE OF ILLINOIS DEPARTMENT OF TRANSPORTATION

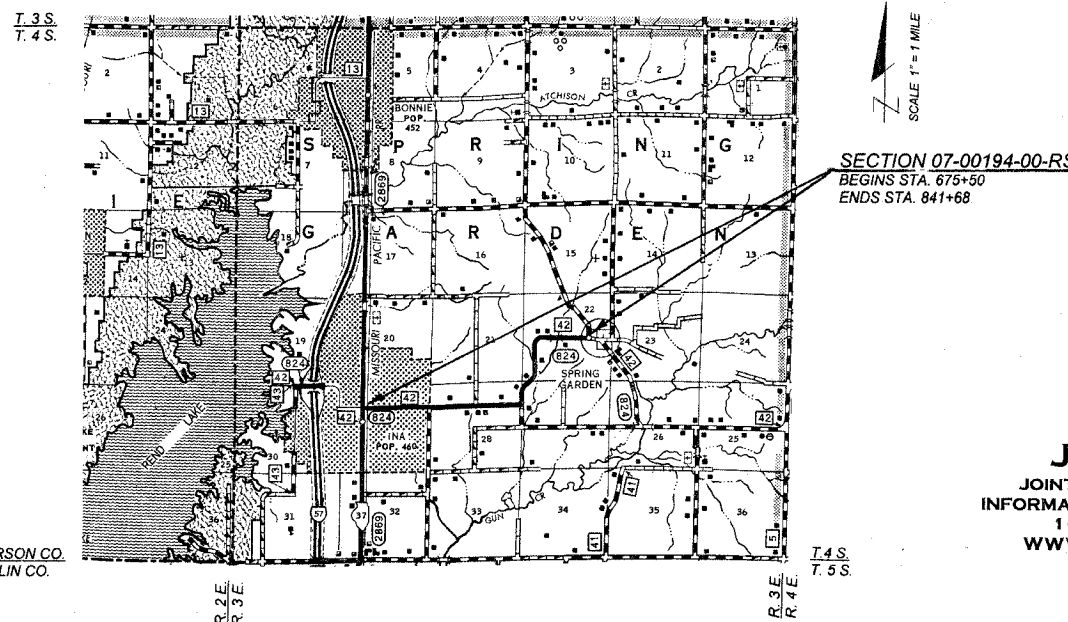
PLANS FOR PROPOSED FEDERAL AID SECONDARY PROJECT

F.A.S. 824 C.H. 42
SECTION 07-00194-00-RS
JEFFERSON CO.
PROJECT NO. RS-824 (106)
JOB NO. C-99-539-07



SCHEDULE OF QUANTITIES			
Quantity	Unit	Item	Code Number
1662	FOOT	SHORT-TERM PVT MKG REM	XX003140
542	SQ YD	COLD MILLING	Z0010700
375	TON	AGG SURF CSE B	40200800
3876	GALLON	BIT MATLS PR CT	40600100
2230	TON	LEV BIND MM N50	40600625
91	SQ YD	TEMPORARY RAMP	40600990
4240	TON	HMA SC "C" N50	40603310
39	SQ YD	CL D PATCH T2 9	44201753
20	SQ YD	CL D PATCH T3 9	44201757
191	SQ YD	CL D PATCH T4 9	44201759
36929	SQ YD	AREA REF CR CON TR A	44300300
1080	TON	AGGREGATE SHLDS B	48101200
1	L SUM	MOBILIZATION	67100100
1	L SUM	TRAF CONT-PROT 701306	70100460
1	L SUM	TRAF CONT-PROT 701336	70100600
3324	FOOT	SHORT-TERM PVT MKING	70300100
45595	FOOT	THPL PVT MK LINE 4	78000200
1	L SUM	RR PROT LIABILITY INS	Z0048665

* SPECIALTY ITEMS



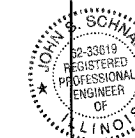
JEFFERSON CO.
FRANKLIN CO.

J. U. L. I. E.
JOINT UTILITY LOCATING
INFORMATION FOR EXCAVATION
1-800-892-0123
WWW.ILLINOIS1CALL.COM

TOTAL SECTION LENGTH=16,618=3.147 MILES
OMISSION=10'
NET SECTION LENGTH=16,608=3.145 MILES

FUNCTIONAL CLASSIFICATION=LOCAL ROAD
DESIGN SPEED =50 M.P.H.

APPROVED 3-12 2008



John Schwanke
COUNTY ENGINEER
JEFFERSON COUNTY HIGHWAY DEPT.
750 OLD FAIRFIELD RD.
MT. VERNON, IL 62864
PH: (618)244-8031
LICENSE EXP. 11-30-09

PASSED MARCH 20 2008

Dennis W. Hillman
DISTRICT NINE ENGINEER OF
LOCAL ROADS AND STREETS

Releasing for
Bid based on
limited review 3-26 2008

Henry C. Lewis
DEPUTY DIRECTOR OF HIGHWAYS
REGION FIVE ENGINEER

STATE OF ILLINOIS
DEPARTMENT OF TRANSPORTATION