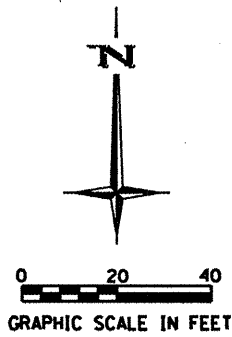
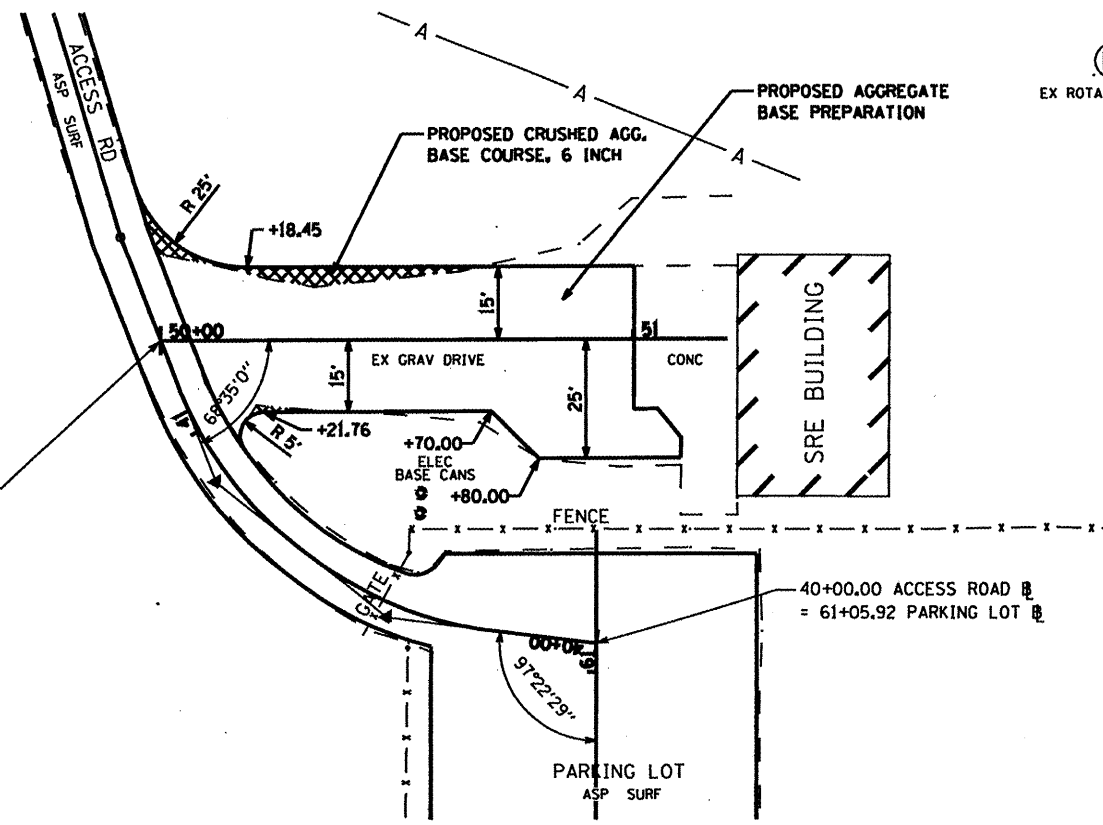


GENERAL NOTES

1. THE EXISTING AGGREGATE BASE SHALL BE BLADED AND SHAPED AS REQUIRED TO PROVIDE FOR THE APPLICATION OF A 2" THICKNESS OF PROPOSED BITUMINOUS SURFACE TO THE FINISHED ELEVATION INDICATED IN THE PLANS. THE COST OF REMOVAL OF THE EXISTING AGGREGATE BASE MATERIAL, WHERE NECESSARY, SHALL BE CONSIDERED INCLUDED IN THE PRICE BID FOR PAY ITEM AR209650 "AGGREGATE BASE PREPARATION" AND NO ADDITIONAL COST WILL BE ALLOWED.
2. ALL BLADED/REMOVED AGGREGATE BASE MATERIAL SHALL BE LAWFULLY DISPOSED OF BY THE CONTRACTOR OFF THE AIRPORT SITE.
3. IN LOCATIONS WHERE NO AGGREGATE BASE COURSE EXISTS, THESE AREAS SHALL BE EXCAVATED AND THE REMOVED MATERIAL DISPOSED OF. THE AREAS SHALL BE REPLACED WITH A SIX (6) INCH DEPTH OF NEW AGGREGATE BASE MATERIAL MEETING THE REQUIREMENTS OF ITEM 209. THE COST OF THE REMOVAL AND DISPOSAL OF THE EXISTING BASE SHALL BE CONSIDERED INCIDENTAL TO THE AGGREGATE BASE PREPARATION, FURNISHING, PLACING AND COMPACTING NEW BASE MATERIAL SHALL BE PAID FOR AT THE UNIT PRICE BID FOR CRUSHED AGGREGATE BASE COURSE.
4. THE CONTRACTOR SHALL EXERCISE CAUTION DURING CONSTRUCTION OPERATIONS SO AS NOT TO DAMAGE THE EXISTING SRE BUILDING, ANY DAMAGE TO BUILDINGS SHALL BE REPAIRED BY THE CONTRACTOR AT HIS/HER OWN EXPENSE TO THE SATISFACTION OF THE ENGINEER AND THE AIRPORT MANAGER.



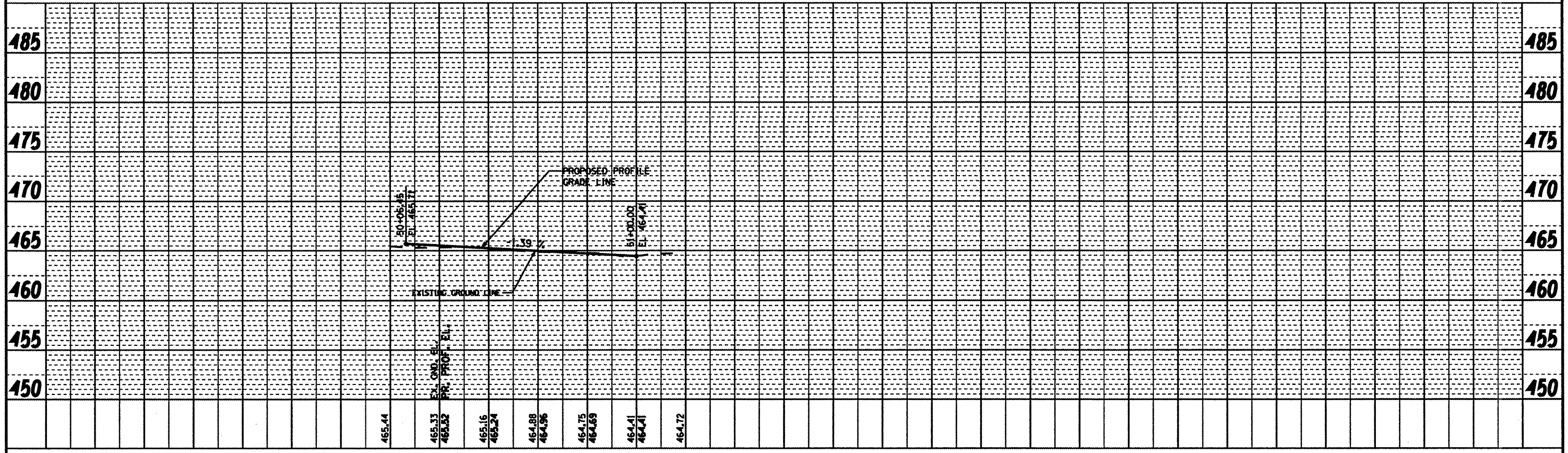
50+00.00 SRE DRIVE = 41+20.53 ACCESS ROAD



EX ROTATING BEACON

OVERLAY QUANTITIES

ITEM NO.	DESCRIPTION	UNIT	QUANTITY
AR209510	CRUSHED AGGREGATE BASE COURSE	TON	9
AR209650	AGGREGATE BASE PREPARATION	S.Y.	338
AR401610	BITUMINOUS SURFACE COURSE	TON	41
AR602510	BITUMINOUS PRIME COAT	GAL.	127



DATE	REVISION

GREATER BEARDSTOWN MUNICIPAL AIRPORT
CITY OF BEARDSTOWN, BEARDSTOWN, ILLINOIS

FILENAME	Plan & Profile Sheets.dgn	
PLOT SCALE	40,000' / IN.	
DATE	JULY 8, 2008	
SHEET 11 OF 40 SHEETS		
LAYOUT	MGM	04/10/08
DRAWN	MGM	04/10/08
REVIEWED	RH3	05/06/08



BENTON & ASSOCIATES, INC.
1970 W. LAFAYETTE AVE., JACKSONVILLE IL 62650
(217) 245-4146 (217) 245-4149 FAX

SRE DRIVE PLAN AND PROFILE

ILL. PROJ. NO. K06-3749 A.I.P. PROJ. NO. 3-17-0004-B12

PLAN

DATE	
BY	
REVISIONS	
DATE	
BY	
REVISIONS	
DATE	
BY	
REVISIONS	
DATE	
BY	
REVISIONS	

PROFILE

DATE	
BY	
REVISIONS	
DATE	
BY	
REVISIONS	
DATE	
BY	
REVISIONS	
DATE	
BY	
REVISIONS	

FILE NAME: P:\B7\899\Design\Plans\Plan & Profile Sheets.dgn