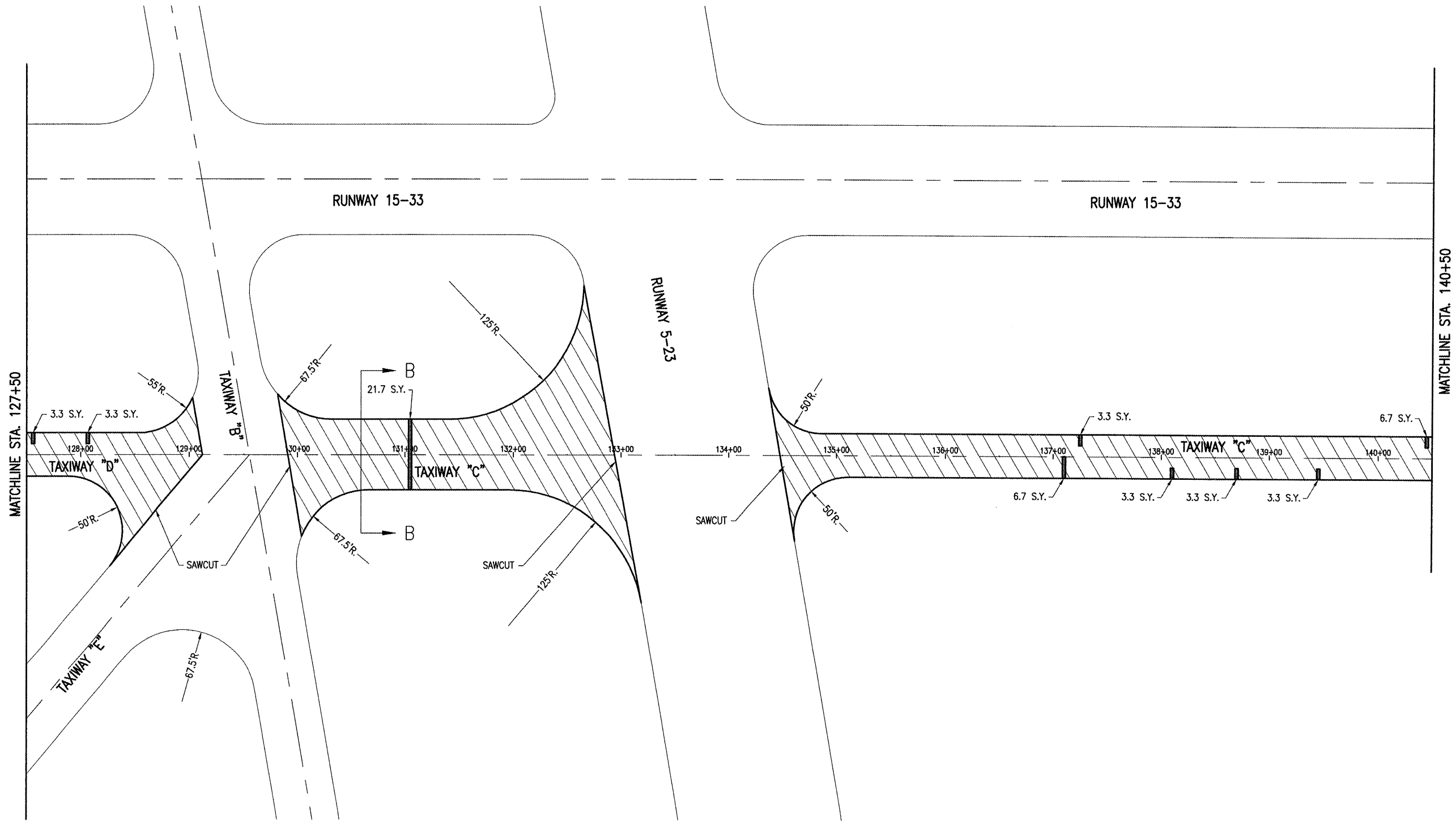


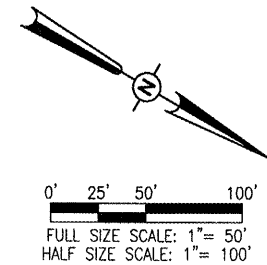
JUN 30, 2008 6:04 PM WALLE00723
 I:\AIRPORTS\MTVERNON\08A0003\DESIGN\CAD\SHEETS\R-111PRP.DWG - 127+50 to 140+50

MV056



TYPICAL SECTION NOTE
 TYPICAL SECTIONS SHOWN ON SHEET 4.

- LEGEND**
- EXISTING PAVEMENT
 - PROPOSED REMOVE & REPLACE BIT. PAVEMENT
 - PROPOSED MILLING



DATE	REVISION	BY

MT. VERNON AIRPORT

 MT. VERNON, ILLINOIS
 IL. PROJ.: MWV-3818 A.I.P. PROJ.: 3-17-0074-B18

Hanson Project No.	08A0003D
Filename	R-111PRP.DWG
Scale	1" = 50'
Date	08/18/08
LAYOUT	02/15/08
DRAWN	MLH
REVIEWED	RAW
	06/24/08

HANSON

 Hanson Professional Services Inc.
 12501 E. Lincoln Ave.
 Springfield, Illinois 62703-2886
 Offices Nationwide

REHABILITATE TAXIWAYS
 "C" AND "D"
 INSTALL ELECTRICAL
 EQUIPMENT
 PROPOSED PAVEMENT
 PREPARATION PLAN
 STA. 127+50 TO STA. 140+50