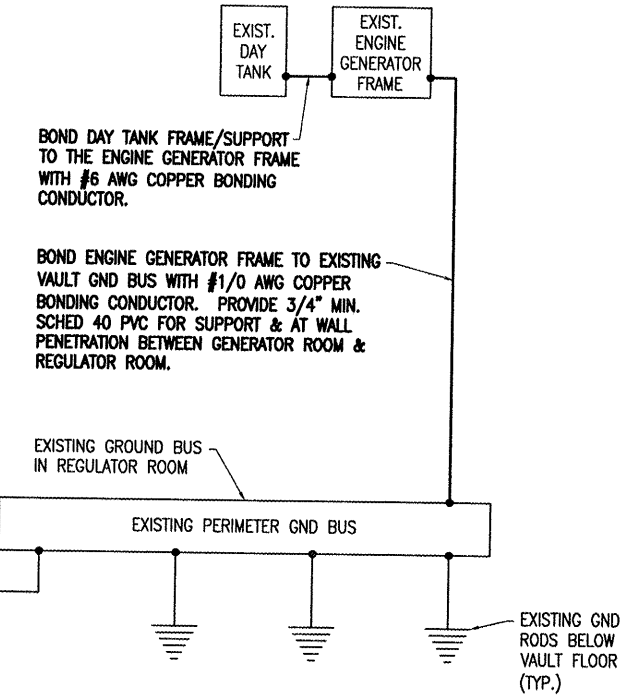


CCR GROUND BUS RISER

BOND HIGH VOLTAGE & LOW VOLTAGE WIREWAYS TO NEW GROUND BUS WITH A #6 AWG (MIN.) COPPER BONDING JUMPER. SEE NOTE 1.

BOND STRUT SUPPORT RACK AT CCR'S TO NEW GROUND BUS WITH A #6 AWG (MIN.) COPPER BONDING JUMPER.

1/4" THICK x 2" HIGH COPPER GROUND BUS WITH STANDOFF INSULATORS. LENGTH TO MATCH EXISTING GND BAR LENGTH WHICH IS APPROXIMATELY 17 FEET, 10 INCHES. GND BUS SHALL REPLACE EXISTING 1/4" x 1.25" HIGH BUS BEHIND CONSTANT CURRENT REGULATORS. GROUND BUS SHALL BE AS MANUFACTURED BY HARGER OR APPROVED EQUAL. GROUND BUS SPLICES SHALL BE EXOTHERMIC WELD OR WITH MANUFACTURER SPLICE PLATES (MIN. DIMENSIONS 1/4" THICK, 2" HIGH, 6" LENGTH WITH 4 BOLTS).



NOTES

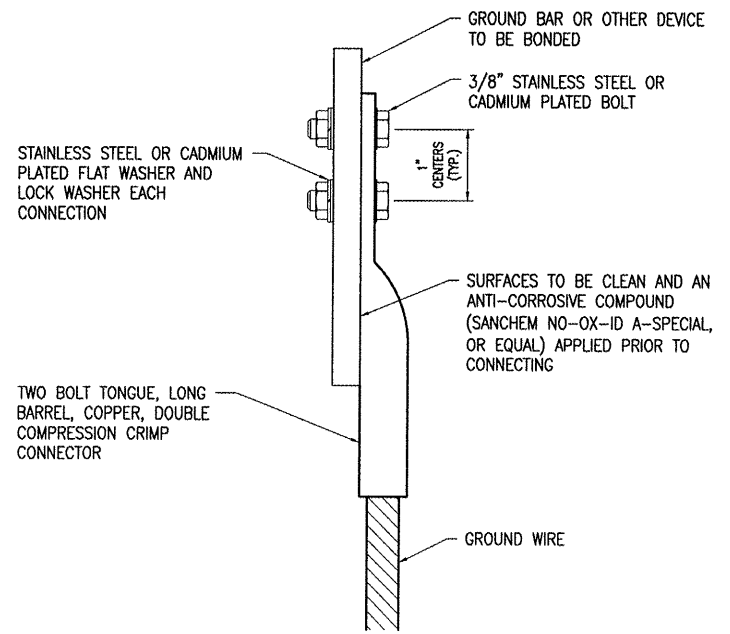
- CONNECTIONS TO GROUND BUS BARS SHALL BE WITH 2-HOLE TONGUE LONG BARREL COMPRESSION LUGS BOLTED TO THE BUS BAR.
- GROUND WIRES FOR INTENTIONAL GROUNDING SWITCH SHALL BE FAA L-824, TYPE C, 5000V CABLE. ALL OTHER INSULATED GROUND WIRES SHALL HAVE GREEN COLORED INSULATION FOR ALL CONDUCTOR AWG AND KCMIL.
- CONSTANT CURRENT REGULATORS SHALL BE SHUT OFF PRIOR TO DISCONNECTING EXISTING FRAME GROUNDS AND SHALL REMAIN OFF UNTIL GROUNDING UPGRADES AND NEW GROUND CONNECTIONS ARE COMPLETED.
- ALL WORK SHOWN ON THIS SHEET SHALL BE PAID FOR UNDER ITEM AS109200 "INSTALL ELECTRICAL EQUIPMENT" PER LUMP SUM.

WORK SHOWN ON THIS SHEET IS FOR BASE BID

2 HOLE LONG BARREL COMPRESSION LUG TABLE		
WIRE SIZE	BURNDY CAT. NO.	THOMAS & BETTS CAT. NO.
#8 AWG STRANDED	YA8C-2TC38	256-30695-1157
#6 AWG SOLID	YA8C-2TC38 OR YGA6C-2TC38E2G1	
#6 AWG STRANDED	YA6C-2TC38	256-30695-1158
#2 AWG STRANDED	YA2C-2TC38	256-30695-1160
#1/0 AWG STRANDED	YA25-2TC38	256-30695-1162
#2/0 AWG STRANDED	YA26-2TC38	256-30695-1116
#3/0 AWG STRANDED	YA27-2TC38	54816BE
#4/0 AWG STRANDED	YA28-2TC38	256-30695-1117

NOTES

- ALL CONNECTIONS TO GROUND BUS BAR SHALL BE WITH 2 HOLE TONGUE LONG BARREL COMPRESSION LUGS BOLTED TO THE BUS BAR.
- GROUND WIRE CONNECTIONS TO EQUIPMENT SHALL BE WITH 2 HOLE TONGUE LONG BARREL COMPRESSION LUGS BOLTED TO THE DEVICE OR WITH THE RESPECTIVE EQUIPT MANUFACTURER'S LUG OR TERMINAL WHERE APPLICABLE.
- GROUNDING ELECTRODE CONDUCTORS, BONDING JUMPERS, & INDIVIDUAL GROUND WIRES SHALL NOT BE INSTALLED IN METAL CONDUIT. WHERE PLASTIC CONDUIT IS USED FOR INDIVIDUAL GROUND WIRES, DO NOT COMPLETELY RENCIRCLE THE CONDUIT WITH FERROUS AND/OR MAGNETIC MATERIALS. WHERE METAL CLAMPS ARE INSTALLED USE NYLON BOLTS, NUTS, WASHERS, & SPACERS TO INTERRUPT A COMPLETE METALLIC PATH FROM ENCIRCLING THE CONDUIT.
- ALL CONNECTIONS SHALL BE COATED WITH A CORROSION PREVENTATIVE COMPOUND (SANCHEM INC. NO-OX-ID A-SPECIAL, OR BURNDY PENETROX E, OR APPROVED EQUAL) BEFORE JOINING. ALL COPPER BUS BARS SHALL BE CLEANED PRIOR TO MAKING CONNECTIONS TO REMOVE SURFACE OXIDATION. CLEAN SURFACES, OF RESPECTIVE DEVICES TO BE BONDED, TO BARE METAL, PER NEC 250-12.



GROUNDING LUG CONNECTION DETAIL

DATE	REVISION	BY
MT. VERNON, ILLINOIS A.I.P. PROJ.: 3-17-0074-B18 I.L. PROJ.: MW-3818		
Hanson Project No.	0840003D	LAYOUT
Estimate	E-608.DWG	DRAWN
Scale	NONE	REVIEWED
Date	06/18/08	
	KNL	02/15/08
	MY	02/15/08
	CAH	06/11/08
Hanson Professional Services Inc. 1525 South Sixth Street Springfield, Illinois 62703-2888 Offices Nationwide		
REHABILITATE TAXIWAYS "C" AND "D" EQUIPMENT CCR GROUND BUS RISER AND GROUNDING DETAILS		
20		
20 of 30 sheets		