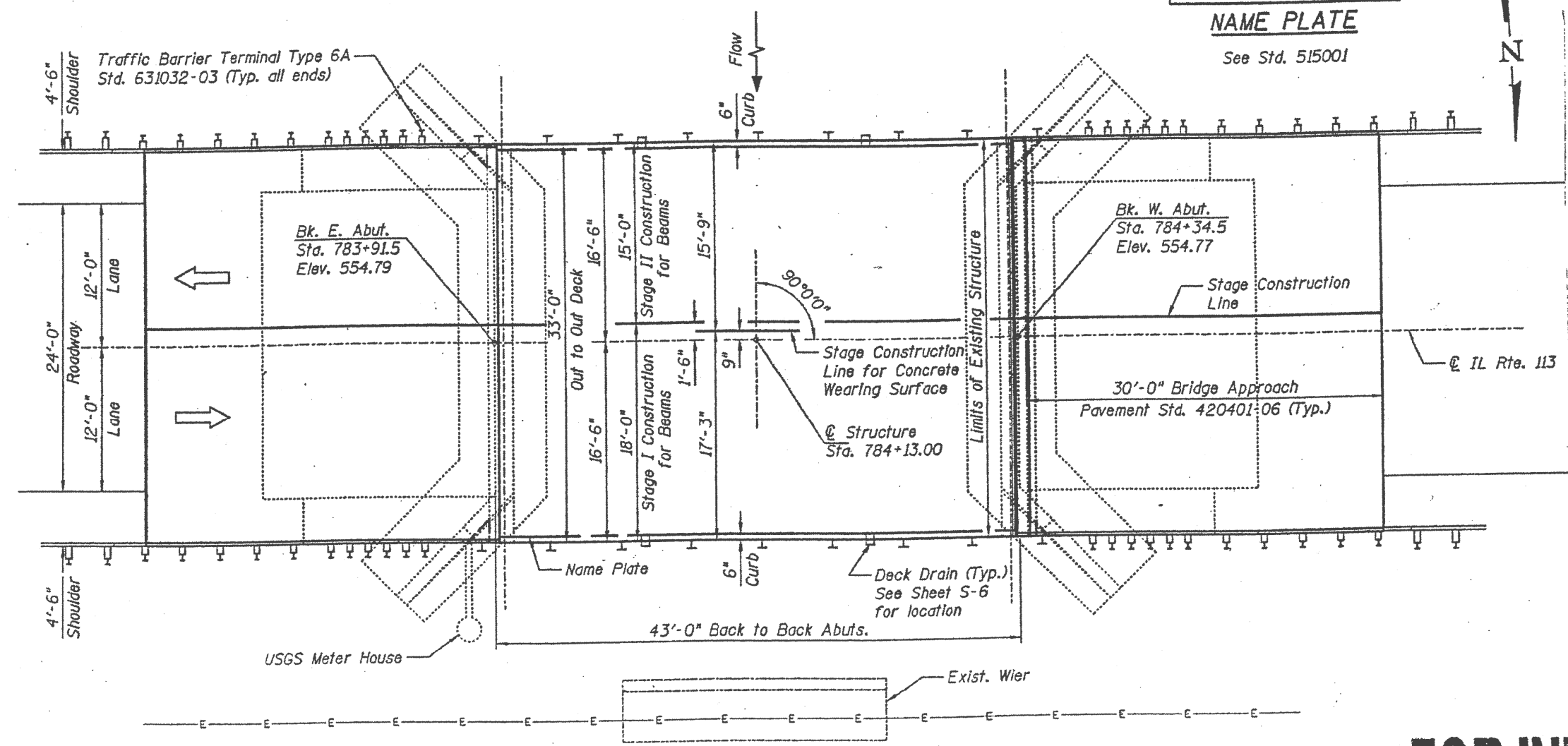


ELEVATION

STATION 784+13.00
 REBUILT 20 BY
 STATE OF ILLINOIS
 IL RT. 113 SEC. 111-B-2
 LOADING HL 93
 STR. NO. 099-0172

NAME PLATE

See Std. 515001



PLAN

FOR INFORMATION ONLY

FILE NAME =	USER NAME = pyrzenowskirb	DESIGNED -	REVISED -	STATE OF ILLINOIS DEPARTMENT OF TRANSPORTATION	FAS 1317 /IL 113 (RIVER ST) GRAY RD TO KANKAKEE CO. LINE EXISTING BRIDGE PLAN (SN 099-0172)	F.A.S. RTE.	SECTION	COUNTY	TOTAL SHEETS	SHEET NO.
et:\pw\work\p\dot\pyrzenowskirb\024944	ND132311-sht-plan.dgn	DRAWN -	REVISED -			1317	112A-R5	WILL	22	14
	PLOT SCALE = 100.0000' / in.	CHECKED -	REVISED -			CONTRACT NO. 60N53				
	PLOT DATE = 2/7/2013	DATE -	REVISED -			SCALE:	SHEET	OF	SHEETS	STA.