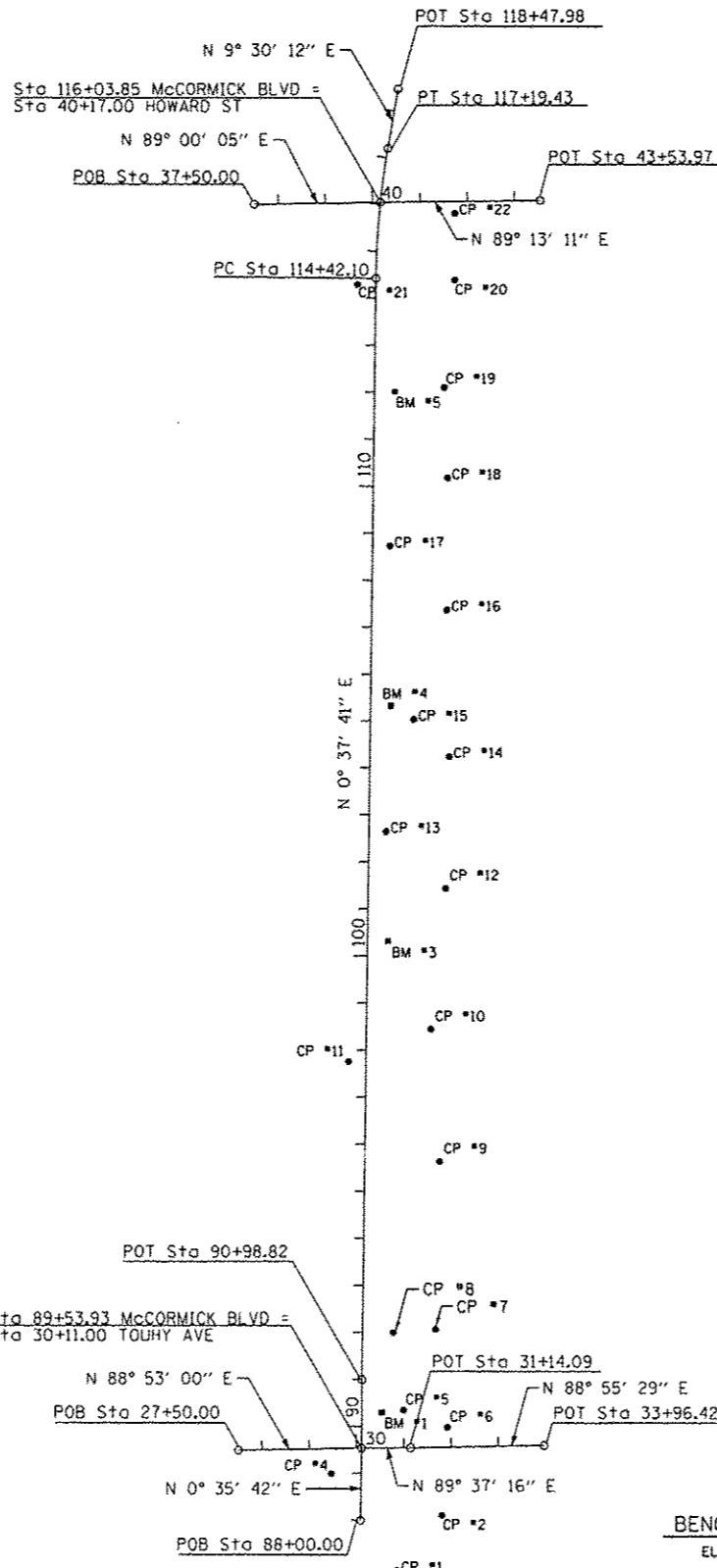


EXIST. CURVE E.MCCORM
 PI STA. = 115+81.04
 $\Delta = 8^\circ 52' 28''$ (RT)
 $D = 3^\circ 11' 59''$
 $R = 1,790.58'$
 $T = 138.95'$
 $L = 277.34'$
 $E = 5.38'$
 P.C. STA. = 114+42.10
 P.T. STA. = 117+19.43



CONTROL POINT	NORTHING	EASTING	ELEVATION	DESCRIPTION
1	1,947,258.40	1,153,326.28	601.05	FOUND PK NAIL IN ASPHALT PATH STA. 86+94.95, 77.66' RT
2	1,947,374.95	1,153,420.45		FOUND REBAR STA. 88+12.48, 170.61' RT
4	1,947,463.29	1,153,187.61	597.09	FOUND "X" CUT IN CONCRETE WALK AT THE S.W. CORNER OF MCCORMICK & TOUHY - STA. 88+98.39, 63.13' LT
5	1,947,598.88	1,153,339.36	598.48	FOUND PK NAIL IN ASPHALT PATH. STA. 90+34.97, 87.74' RT
6	1,947,562.58	1,153,431.74		FOUND REBAR STA. 89+99.02, 180.26' RT
7	1,947,771.02	1,153,406.19	598.43	FOUND PK NAIL IN ASPHALT PATH STA. 92+08.47, 153.14 RT
8	1,947,763.99	1,153,317.17	599.09	FOUND PK NAIL IN ASPHALT PATH STA. 92+00.46, 64.20' RT
9	1,948,127.98	1,153,414.02		FOUND REBAR STA. 95+65.48, 157.05' RT
10	1,948,409.26	1,153,395.43		FOUND REBAR STA. 98+46.55, 1035.38' RT
11	1,948,340.68	1,153,222.57	596.30	FOUND "X" CUT IN CONCRETE WALK STA. 97+76.07, 36.72' LT
12	1,948,708.40	1,153,425.85	599.65	FOUND PK NAIL IN ASPHALT PATH STA. 101+46.01, 162.62' RT
13	1,948,829.32	1,153,300.44	596.57	FOUND PK NAIL IN ASPHALT PATH STA. 102+65.54, 35.79' RT
14	1,948,988.72	1,153,433.47	599.26	FOUND PK NAIL STA. 104+26.39, 167.07' RT
15	1,949,068.17	1,153,358.56	600.27	FOUND PK NAIL IN ASPHALT PATH STA. 105+05.01, 91.29' RT
16	1,949,301.64	1,153,427.95	601.23	FOUND PK NAIL STA. 107+39.23, 158.12' RT
17	1,949,436.89	1,153,307.84		FOUND REBAR STA. 108+73.16, 36.54' RT
18	1,949,582.20	1,153,428.95		FOUND REBAR STA. 110+19.78, 156.05' RT
19	1,949,775.01	1,153,421.95		FOUND REBAR STA. 112+12.51, 146.93 RT
20	1,950,002.73	1,153,443.39		FOUND REBAR STA. 114+40.45, 165.87' RT
21	1,949,993.58	1,153,238.78	597.50	FOUND "X" CUT IN CONCRETE WALK STA. 114+29.05, 38.62' LT
22	1,950,145.07	1,153,443.48	600.39	FOUND "X" CUT IN CONCRETE WALK STA. 115+96.62, 158.33 RT

ALIGNMENT COORDINATES - MCCORMICK BOULEVARD

	STATION	NORTHING	EASTING
POB	88+00.00	1,947,364.25	1,153,249.71
POT	89+53.93	1,947,518.17	1,153,251.31
POT	90+98.82	1,947,663.06	1,153,251.86
PC	114+42.10	1,950,006.20	1,153,277.54
PI	115+81.04	1,950,145.13	1,153,279.07
PT	117+19.43	1,950,282.17	1,153,302.01
POT	118+47.98	1,950,408.96	1,153,323.23

ALIGNMENT COORDINATES - TOUHY AVENUE

	STATION	NORTHING	EASTING
POB	27+50.00	1,947,513.08	1,152,990.36
POT	30+11.00	1,947,518.17	1,153,251.31
POT	31+14.09	1,947,518.85	1,153,354.41
POT	33+96.42	1,947,524.15	1,153,636.68

ALIGNMENT COORDINATES - HOWARD STREET

	STATION	NORTHING	EASTING
POB	37+50.00	1,950,163.00	1,153,019.66
POT	40+17.00	1,950,167.66	1,153,286.62
POT	43+53.97	1,950,172.25	1,153,623.55

BENCHMARK #1
 ELEV. 597.71'
 CHISELED SQUARE ON W. SIDE OF CONCRETE BASE OF TRAFFIC SIGNAL AT NE CORNER OF MCCORMICK AND TOUHY STA. 90+29.94, 42.17' RT.

BENCHMARK #3
 ELEV. 597.53'
 CHISELED SQUARE ON THE W. SIDE OF CONCRETE BASE OF THE 7TH LIGHT POLE N. OF TOUHY AVE ON THE E. SIDE OF MCCORMICK STA. 100+31.93, 43.12' RT.

BENCHMARK #4
 ELEV. 598.66'
 CHISELED SQUARE IN W. SIDE OF CONCRETE BASE OF THE 7TH LIGHT POLE S. OF HOWARD ON E. SIDE OF MCCORMICK STA. 105+32.83, 42.60' RT.

BENCHMARK #5
 ELEV. 598.80'
 CHISELED SQUARE IN W. SIDE OF CONCRETE BASE OF THE 3RD LIGHT POLE S. OF HOWARD ON E. SIDE OF MCCORMICK STA. 112+01.23, 43.07' RT.

STATE OF ILLINOIS
 DEPARTMENT OF TRANSPORTATION

MCCORMICK BLVD - HOWARD STREET TO TOUHY AVENUE
 ALIGNMENT AND CONTROL POINTS

SCALE: 1"=200' SHEET 1 OF 1 SHEETS STA. TO STA.

F.A.U. RTE.	SECTION	COUNTY	TOTAL SHEETS	SHEET NO.
0378	3738-T	COOK	28	6

CONTRACT NO. 60RB7
 ILLINOIS FED. AID PROJECT

USER NAME	DESIGNED	REVISED
1485	RS	-
DRAWN	ED	REVISED
		-
CHECKED	RS	REVISED
		-
DATE	12/17/2013	REVISED
		-

12:40:44 PM
 12/17/2013