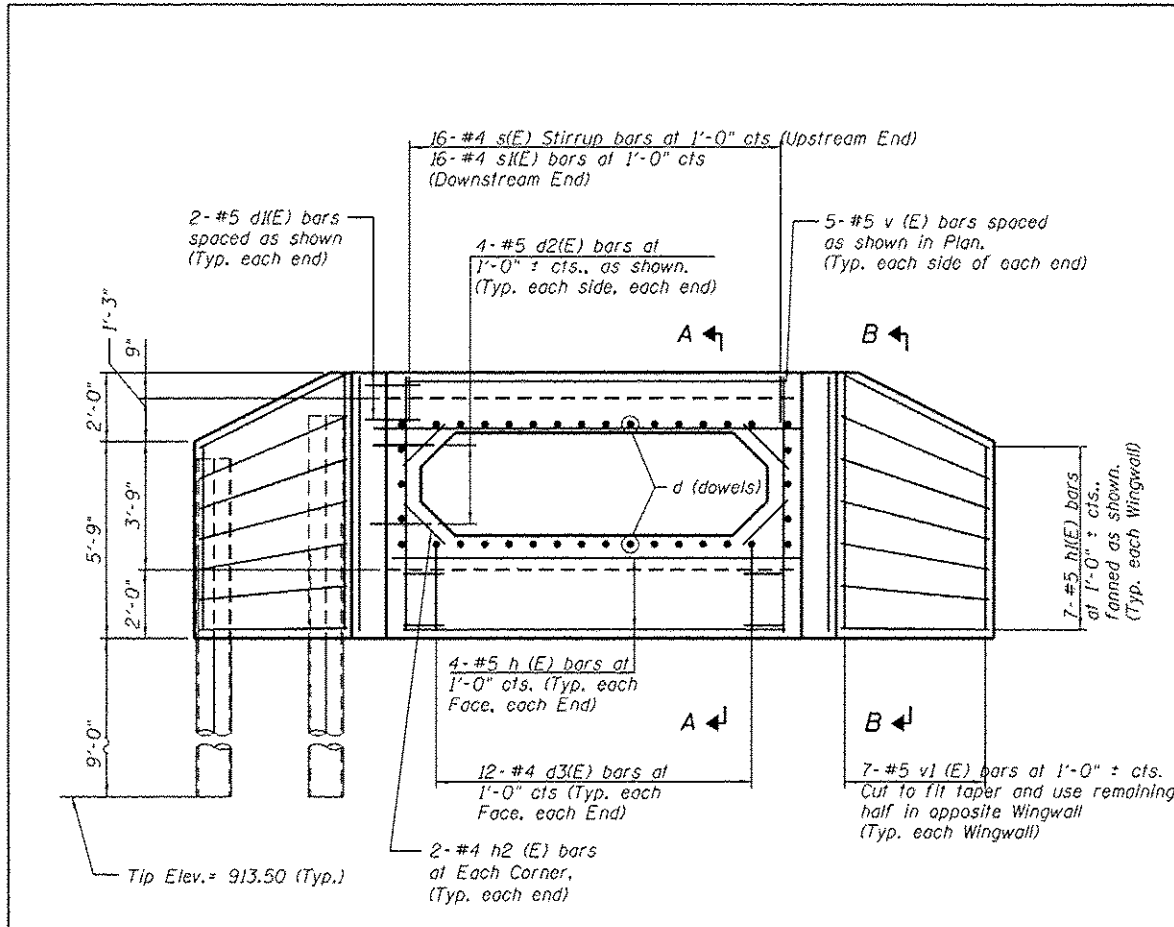


BILL OF MATERIAL

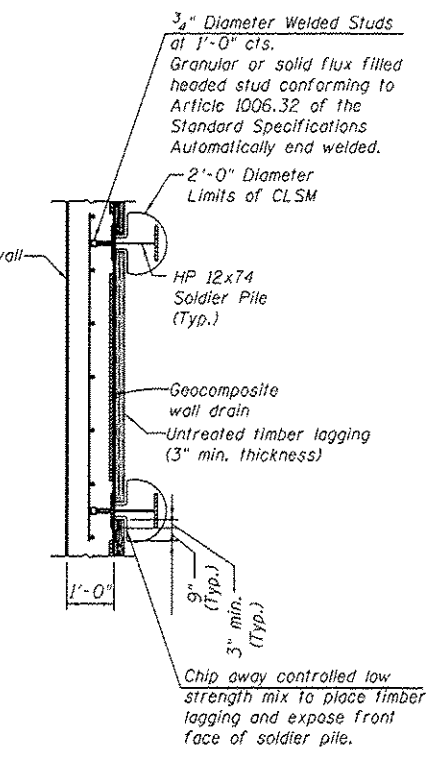
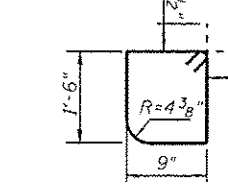
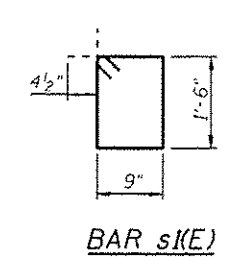
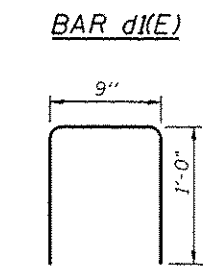
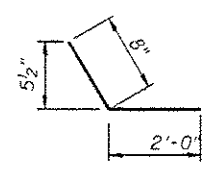
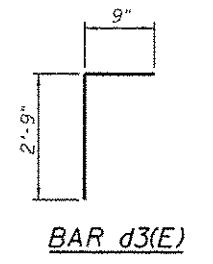
Bar	No.	Size	Length	Shape
d (E)	68	#5	1'-3"	—
d1 (E)	16	#5	2'-8"	—
d2 (E)	16	#5	2'-9"	—
d3 (E)	48	#4	3'-6"	—
h (E)	24	#5	13'-8"	—
h1 (E)	28	#5	5'-9"	—
h2 (E)	16	#4	3'-2"	—
v (E)	20	#5	7'-5"	—
v1 (E)	14	#5	12'-10"	—
s (E)	16	#4	5'-3"	—
s1 (E)	16	#4	5'-3"	—
Concrete Structures			Cu. Yd.	9.9
Reinforcement Bars, Epoxy Coated			Pound	1,290

Concrete Structures Cu. Yd. 9.9
Reinforcement Bars, Epoxy Coated Pound 1,290

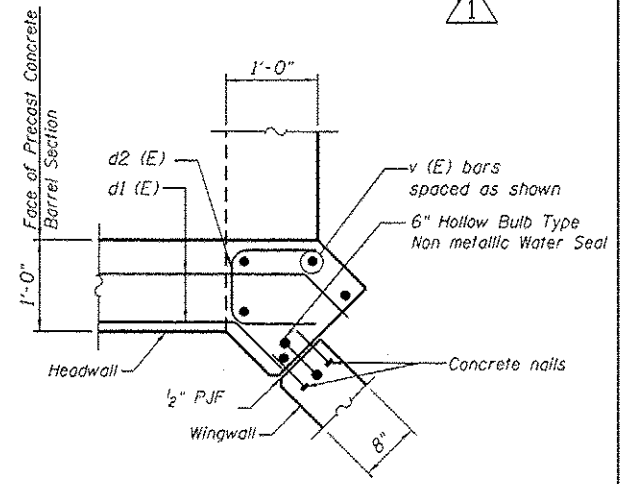


ELEVATION

Cast-in-Place Headwall and Wingwalls
(Typical Each End)

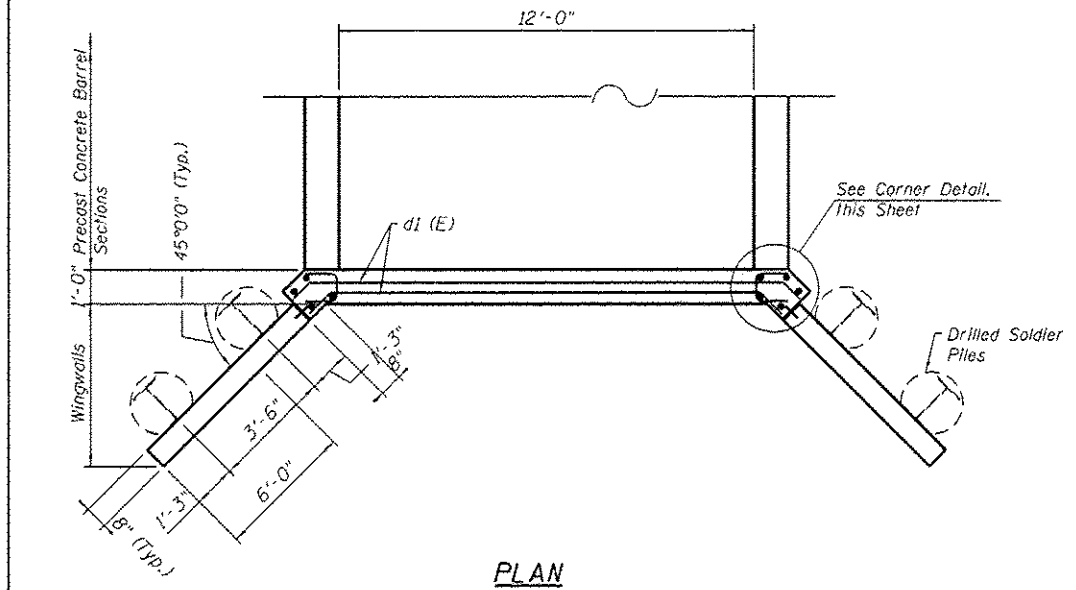


SOLDIER PILE DETAIL



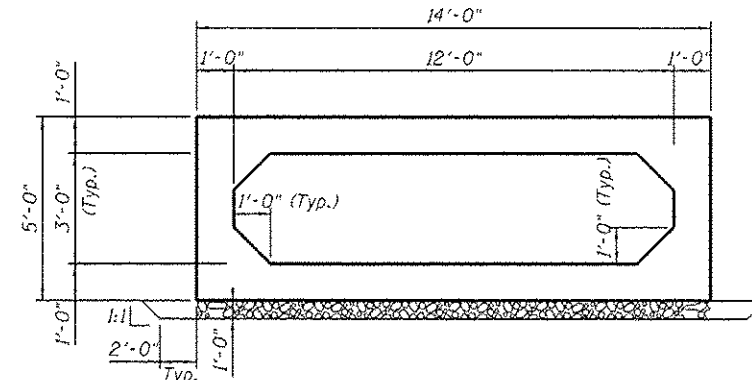
CORNER DETAIL

(Typical at each Wingwall)

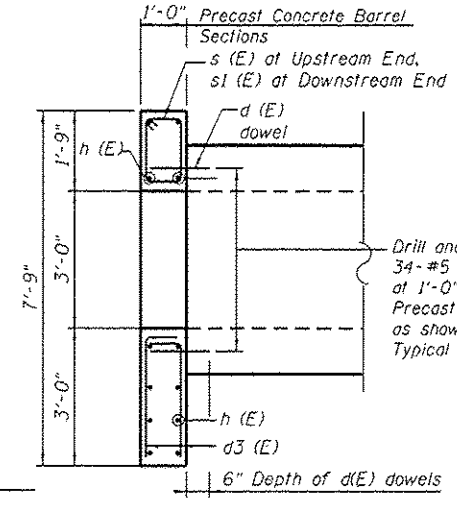


PLAN

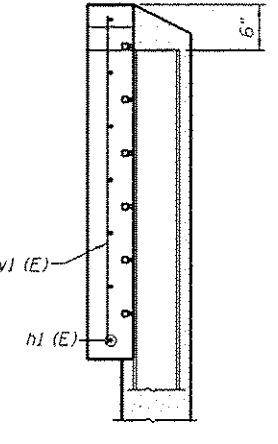
Cast-in-Place Headwall and Wingwalls
(Typical Each End)



SECTION THRU PRECAST CONCRETE BARREL



SECTION A-A AT HEADWALL



SECTION B-B AT WINGWALL

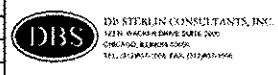
ADDENDUM 1 7-18-14

NOTES

See Notes on Sheet S2.

PLOT DATE = \$DATE\$
FILE NAME = \$FILE\$

USER NAME =	DESIGNED - MBC	REVISED -
PLOT SCALE =	DRAWN - BA/DS	REVISED -
PLOT DATE =	CHECKED - WPK	REVISED -
FILE NAME =	DATE - 5/19/2014	REVISED -



STATE OF ILLINOIS
DEPARTMENT OF TRANSPORTATION

CULVERT SECTION AND HEADWALL AND WINGWALL DETAILS
STRUCTURE NO. 045-0260

SHEET NO. S4 OF S6 SHEETS

F.A.P. RTE. 345	SECTION 106-S-N-2	COUNTY KANE	TOTAL SHEETS 147	SHEET NO. 101
CONTRACT NO. 60T09				
FED. ROAD DIST. NO. 1 ILLINOIS FED. AID PROJECT				