

CODE NO.	ITEM	UNIT	TOTAL QUANTITY	CONSTRUCTION CODE				
				0004	0021	0021	0021	0021
				80% FEDERAL 20% STATE ROADWAY	80% FEDERAL 20% STATE TRAFFIC SIGNALS	80% FEDERAL 20% STATE INTERCONNECT	100% VILLAGE OF PINGREE GROVE FIRE PROT. DIST. SAFETY (EVP)	80% FEDERAL 20% STATE LIGHTING
44201759	CLASS D PATCHES, TYPE IV, 9 INCH	SO YD	170	170				
44201833	CLASS D PATCHES, TYPE IV, 15 INCH	SO YD	345	345				
48101500	AGGREGATE SHOULDERS, TYPE B 6"	SO YD	2,447	2,447				
48203029	HOT-MIX ASPHALT SHOULDERS, 8"	SO YD	6,184	6,184				
50100100	REMOVAL OF EXISTING STRUCTURES	EACH	2	2				
50105220	PIPE CULVERT REMOVAL	FOOT	28	28				
50200100	STRUCTURE EXCAVATION	CU YD	166	166				
50200450	REMOVAL AND DISPOSAL OF UNSUITABLE MATERIAL FOR STRUCTURES	CU YD	72	72				
50800205	REINFORCEMENT BARS, EPOXY COATED	POUND	1290	1290				
50300225	CONCRETE STRUCTURES	CU YD	9.9	9.9				
50800515	BAR SPLICERS	EACH	148	148				
50300300	PROTECTIVE COAT	SQ YD	4	4				
51500100	NAME PLATES	EACH	1	1				
54003000	CONCRETE BOX CULVERTS	CU YD	118	118				
54011203	PRECAST CONCRETE BOX CULVERTS 12' x 3'	FOOT	104	104				
54010302	PRECAST CONCRETE BOX CULVERTS 3' x 2'	FOOT	20	20				
542A0217	PIPE CULVERTS, CLASS A, TYPE 1 12"	FOOT	80	80				
542A0229	PIPE CULVERTS, CLASS A, TYPE 1 24"	FOOT	70	70				



Rev. 7-21-14

Rev.

SHT. PLAN	USER NAME : #USER#	DESIGNED - MTM	REVISED -	STATE OF ILLINOIS DEPARTMENT OF TRANSPORTATION	SUMMARY OF QUANTITIES			F.A.P. RTE.	SECTION	COUNTY	TOTAL SHEETS	SHEET NO.
	PLOT SCALE : #SCALE#	DRAWN - MTM	REVISED -					345	106-S-N-2	KANE	147	7
	PLOT DATE : #DATE#	CHECKED - BA	REVISED -					CONTRACT NO. 60T09				
	DATE - 3/31/14	REVISED -		SCALE: N.T.S.	SHEET 4 OF 13 SHEETS	STA.	TO STA.	ILLINOIS FED. AID PROJECT				

FILE NAME: G:\Projects\ILLINOIS Department of Transportation\106-S-N-2\106-S-N-2.dwg - Item 7 - Various Various Work Drawings No. 11 (South) US 28 at IL 47 & IL-72\Civil\Cadd Sheets\106S-N-2-106.dwg

CODE NO.	ITEM	UNIT	TOTAL QUANTITY	CONSTRUCTION CODE						
				0004 80% FEDERAL 20% STATE ROADWAY	0021 80% FEDERAL 20% STATE TRAFFIC SIGNALS	0021 80% FEDERAL 20% STATE INTERCONNECT	0021 100% VILLAGE OF PINGREE GROVE FIRE PROT. DIST. SAFETY (EVP)	0021 80% FEDERAL 20% STATE LIGHTING		
X5401203	PRECAST CONCRETE BOX CULVERTS 12' X 3' (SPECIAL)	FOOT	104	104						
X7010216	TRAFFIC CONTROL AND PROTECTION, (SPECIAL)	L SUM	1	1						
Δ X8140215	HEAVY-DUTY HANDHOLE TO BE ADJUSTED	EACH	1			1				
Δ X8570231	FULL-ACTUATED CONTROLLER AND TYPE V CABINET, SPECIAL	EACH	1		1					
Δ X8620200	UNINTERRUPTIBLE POWER SUPPLY, SPECIAL	EACH	1		1					
Δ X8600105	MASTER CONTROLLER (SPECIAL)	EACH	1			1				
Δ X8710024	FIBER OPTIC CABLE IN CONDUIT, NO. 62.5/125, MM12F SM24F	FOOT	2,815			2,815				
Z0005216	HOT-MIX ASPHALT STABILIZATION 6" AT STEEL PLATE BEAM GUARD RAIL	SO YD	83	83						
⊙ Z0010614	CLEANING EXISTING MANHOLE OR HANDHOLE	EACH	2			2				
Z0013798	CONSTRUCTION LAYOUT	L SUM	1	1						
Z0026402	FURNISH SOLDIER PILES (HP SECTION)	FOOT	108	108						
⊙ Z0018500	DRAINAGE STRUCTURES TO BE CLEANED	EACH	5	5						
Z0026407	TEMPORARY SHEET PILING	SO FT	989	989						
Z0028450	GEOTEXTILE FABRIC FOR RAILROAD CROSSING	SO YD	1,508	1,508						
Z0030850	TEMPORARY INFORMATION SIGNING	SO FT	51	51						
Δ Z0033020	LUMINAIRE SAFETY CABLE ASSEMBLY	EACH	30						30	
Δ Z0033028	MAINTENANCE OF LIGHTING SYSTEM	CAL MO	12						12	
Δ Z0033056	OPTIMIZE TRAFFIC SIGNAL SYSTEM	EACH	1			1				

Δ SPECIALTY ITEM

⊙ 100% STATE (NP)

Rev. 7-21-14

Rev.

SMT_PLAN	USER NAME = chrstfish	DESIGNED - MTM	REVISED -	STATE OF ILLINOIS DEPARTMENT OF TRANSPORTATION	SUMMARY OF QUANTITIES	F.A.P. RTE.	SECTION	COUNTY	TOTAL SHEETS	SHEET NO.
	PLOT SCALE = 100.0000 1" = 50'	DRAWN - MTM	REVISED -			345	106-S-N-2	KANE	147	15
	PLOT DATE = 4/2/2014	CHECKED - BA	REVISED -	SCALE: N.T.S.	SHEET 12 OF 13 SHEETS STA. TO STA.	ILLINOIS FED. AID PROJECT				
		DATE - 3/31/14	REVISED -	CONTRACT NO. 60T09						

CODE NO.	ITEM	UNIT	TOTAL QUANTITY	CONSTRUCTION CODE					
				0004 80% FEDERAL 20% STATE ROADWAY	0021 80% FEDERAL 20% STATE TRAFFIC SIGNALS	0021 80% FEDERAL 20% STATE INTERCONNECT	0021 100% VILLAGE OF PINGREE GROVE FIRE PROT. DIST. SAFETY (EVP)	0021 80% FEDERAL 20% STATE LIGHTING	
Z0055905	TEMPORARY CONSTRUCTION FENCE	FOOT	2,310	2,310					
Z0062456	TEMPORARY PAVEMENT	SO YD	3,721	3,721					
Z0064800	SELECTIVE CLEARING	UNIT	3	3					
Δ Z0073510	TEMPORARY TRAFFIC SIGNAL TIMING	EACH	1		1				
∅ Z0076600	TRAINEES	HOUR	500	500					
∅ Z0076604	TRAINEES-TRAINING PROGRAM GRADUATE	HOUR	500	500					
X0323201	TEMPORARY SEDIMENT BASIN	EACH	7	7					
54011203	PRECAST CONCRETE BOX CULVERTS 12' X 3'	FOOT	109	109					
* 66900200	NON-SPECIAL WASTE DISPOSAL	CU YD	60	60					
* 66A00450	SPECIAL WASTE PLANS AND REPORTS	L SUM	1	1					
* 66900530	SOIL DISPOSAL ANALYSIS	EACH	1	1					

00042 TRAINEES

Rev 7-17-14

Rev,

FILE NAME * BFILEL *

USER NAME * #USER#	DESIGNED - MTM	REVISED -
DRAWN - MTM	REVISED -	
CHECKED - BA	REVISED -	
DATE - 3/31/14	REVISED -	

STATE OF ILLINOIS
DEPARTMENT OF TRANSPORTATION

SUMMARY OF QUANTITIES

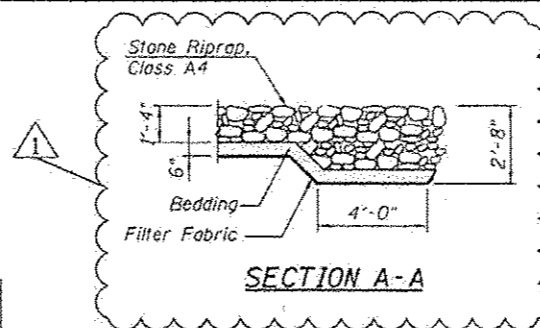
SCALE: N.T.S. SHEET 13 OF 13 SHEETS STA. TO STA.

F.A.P. RTE.	SECTION	COUNTY	TOTAL SHEETS	SHEET NO.
345	106-S-N-2	KANE	147	16
CONTRACT NO. 60T09			ILLINOIS FED. AID PROJECT	

Bench Mark: BM #2 Set at Sta. 71+61.8, Elev. 931.030. Spike in the northwesterly face of 32-inch tree at the northeast corner of U.S. Route 20 and IL Route 47 ±110' foot north of utility pole w/ transformer.

Existing Structure: SN 045-0251 was built as part of US Route 20, Section 106-S-N-2. The structure is a single cast-in-place concrete box culvert approximately 12 feet in length and 55 feet in width. The structure is not skewed to the roadway centerline and carries two 12-foot traffic lanes and two 6-foot shoulders. Structure to be removed and replaced. Traffic to be maintained utilizing stage construction.

No Salvage.



WATERWAY INFORMATION

Drainage Area = 1.06 Sq. Mi.		Existing Low Grade Elev. = 929.3 ft. @ Sta. 75+00		Proposed Low Grade Elev. = 929.3 ft. @ Sta. 75+00		
Flood	Freq. Yr.	Q C.F.S.	Opening Sq. Ft.	Natural H.W.E.	Head - Ft.	Headwater El.
			Exist.	Prop.	Exist.	Prop.
Design	10	131	35.6	35.9	926.41	926.41
Base	50	300	36.0	36.0	927.29	928.22
Overtopping	100	434	36.0	36.0	928.39	929.61
Max. Calc.	500	669	36.0	36.0	928.73	929.99

HIGHWAY CLASSIFICATION

F.A.P. Route 345, US Route 20.
 Function Class: Other Principal Arterial
 ADT: 7,550 vpd (2011)
 ADTT: 1025 (2011) 14%
 DHV: 755 (2007)
 Design Speed: 60 mph
 Posted Speed 55 mph

LOADING HL-93

Allow 50#/Sq Ft. for Future Wearing Surface

DESIGN SPECIFICATIONS

2012 AASHTO LRFD Bridge Design Specifications, 6th Edition

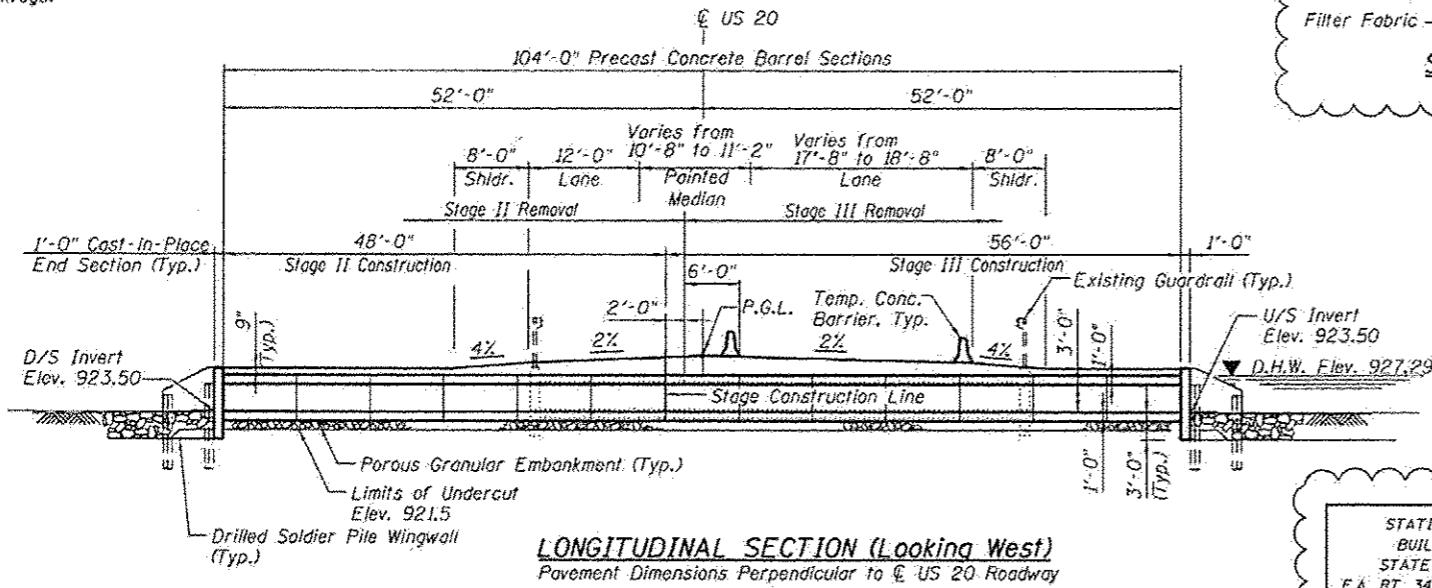
DESIGN STRESSES

FIELD UNITS
 f'c = 3,500 psi
 fy = 60,000 psi (Reinforcement)

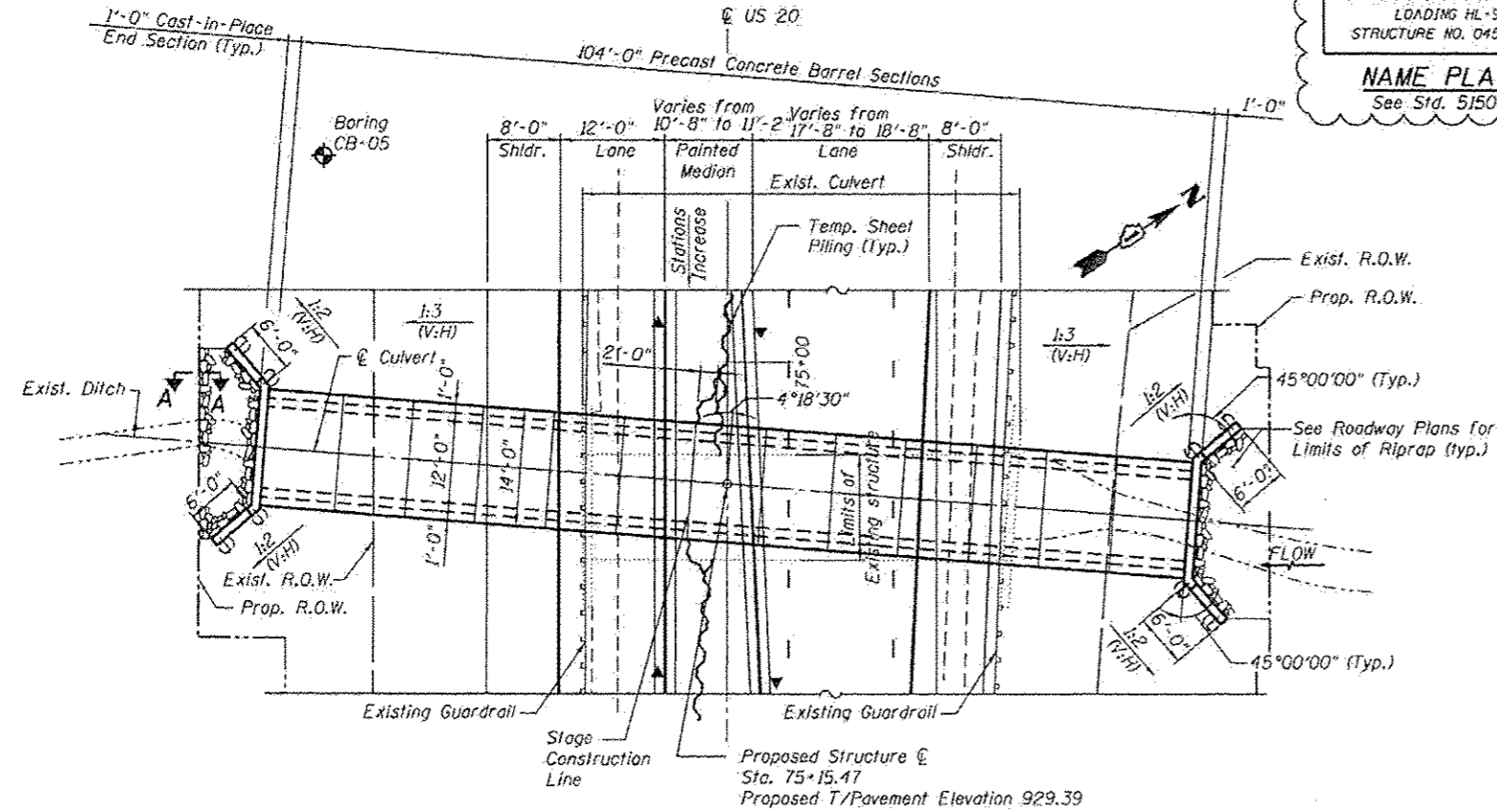
PRECAST UNITS
 f'c = 5,000 psi
 fy = 65,000 psi (Reinforcement)

TOTAL BILL OF MATERIAL

ITEM	UNIT	TOTAL
Porous Granular Embankment	Cu. Yd.	72
Stone Riprap, Class A4	Sq. Yd.	33
Filter Fabric	Sq. Yd.	36
Removal of Existing Structures	Each	1
Structure Excavation	Cu. Yd.	128
Removal and Disposal of Unsuitable Material for Structures	Cu. Yd.	72
Concrete Structures	Cu. Yd.	9.9
Protective Coat	Sq. Yd.	4
Reinforcement Bars, Epoxy Coated	Pound	1290
Drilling and Setting Soldier Piles (in soil)	Cu. Yd.	19.7
Precast Concrete Box Culverts 12'x3'	Foot	104
Furnishing Soldier Piles (HP Section)	Foot	108
Temporary Sheet Piling	Sq. Ft.	355



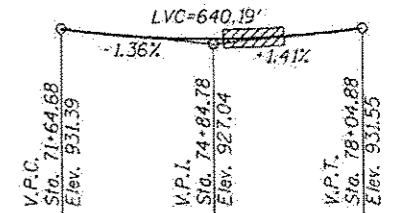
NAME PLATE
 See Sta. 515001



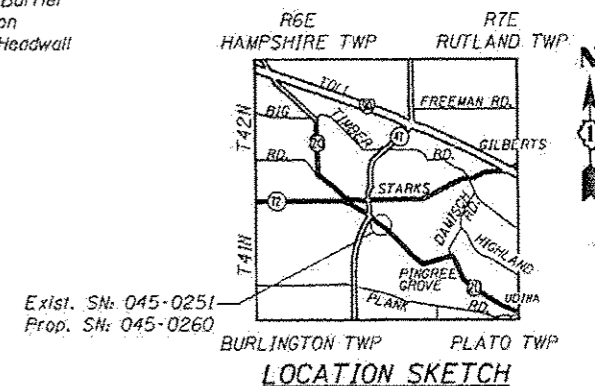
INDEX OF SHEETS

- S1 General Plan and Elevation
- S2 Stage Construction
- S3 Temporary Concrete Barrier for Stage Construction
- S4 Culvert Section and Headwall and Wingwall Details
- S5 Soil Boring Logs I
- S6 Soil Boring Logs II

PROFILE GRADE LINE
 (IL US 20, Along @ Roadway)



LOCATION SKETCH



GENERAL PLAN

US ROUTE 20 OVER UN-NAMED DITCH
F.A.P. ROUTE 345 - SECTION 106-S-N-2

KANE COUNTY

STATION 75+15.47

STRUCTURE NO. 045-0260



Signed *M. Basar Civelek*
 Mehmet Basar Civelek, P.E., S.E.
 Il. Lic. No. 081-005449
 Expires 11-30-2014

Date **7-18-2014**

Note:
 The contractor shall grade around the wingwalls in such manner to create a positive drainage away from the culvert.

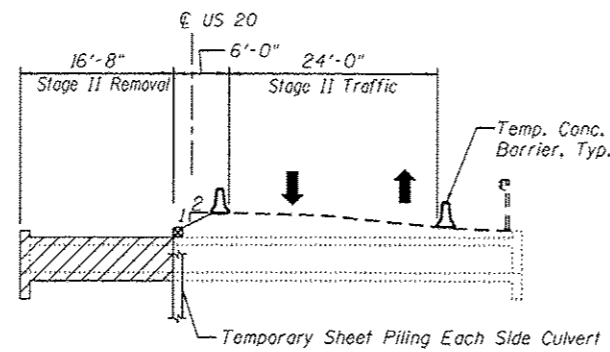
LEGEND

- Soil Boring
- Sheet Piling

ADDENDUM 1 7-18-14

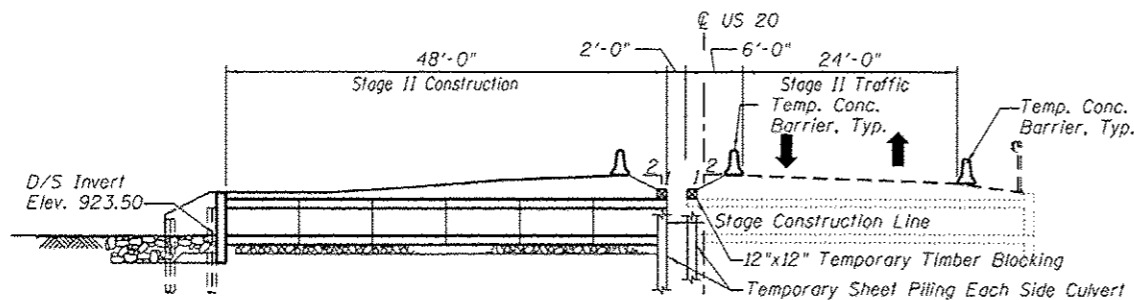
PLOT DATE = \$DATE\$ FILE NAME = \$FILEL\$

USER NAME =	DESIGNED - MBC	REVISED -	DIBS CONSULTANTS, INC. 1234 RIVERVIEW DRIVE, SUITE 200 CHICAGO, IL 60606 TEL: (773) 555-1234 FAX: (773) 555-1234	STATE OF ILLINOIS DEPARTMENT OF TRANSPORTATION	GENERAL PLAN AND ELEVATION STRUCTURE NO. 045-0260	F.A.P. RTE.	SECTION	COUNTY	TOTAL SHEETS	SHEET NO.
PLOT SCALE =	DRAWN - BA/DS	REVISED -				345	106-S-N-2	KANE	147	98
PLOT DATE =	CHECKED - WPK	REVISED -				CONTRACT NO. 60T09				
FILE NAME =	DATE - 5/19/2014	REVISED -				FED. ROAD DIST. NO. 1 ILLINOIS FED. AID PROJECT				
SHEET NO. 51 OF 56 SHEETS										



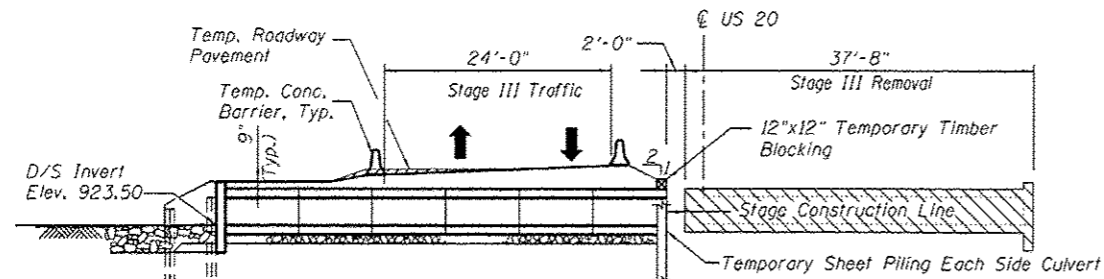
STAGE II REMOVAL

(Looking West)
(Pavement Dimensions Perpendicular to US 20 Roadway)



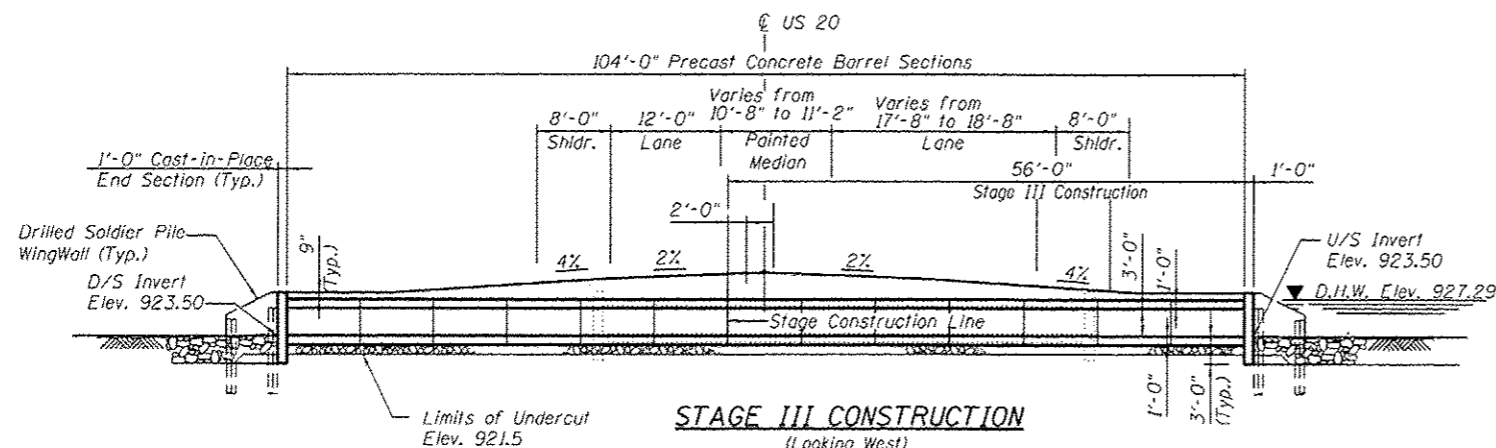
STAGE II CONSTRUCTION

(Looking West)
(Pavement Dimensions Perpendicular to US 20 Roadway)



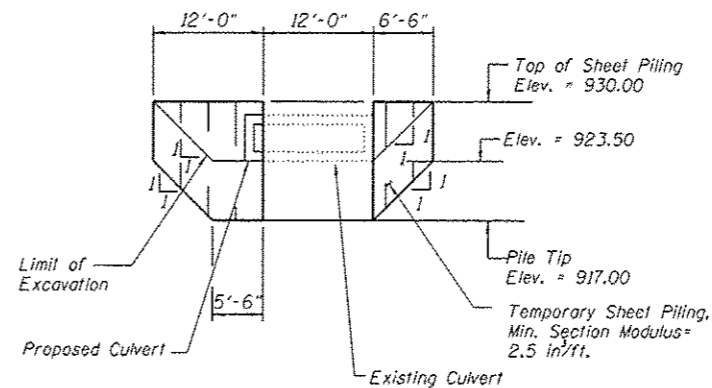
STAGE III CONSTRUCTION

(Looking West)
(Pavement Dimensions Perpendicular to US 20 Roadway)



STAGE III CONSTRUCTION

(Looking West)
(Pavement Dimensions Perpendicular to US 20 Roadway)



ELEVATION - TEMPORARY SHEET PILING

GENERAL NOTES

- Reinforcement bars designated (E) shall be epoxy coated.
- Protective Coat shall be applied to the top faces of the headwall.
- All exposed concrete edges shall be chamfered $\frac{3}{4}$ " except as noted.
- The limits and quantities of removal of the existing soil and replacement with the porous granular embankment materials shown are based on the boring data and may be modified by the District Geotechnical and Field Engineers for variable subsurface conditions encountered in the field.
- Layout of the slope protection system may be varied to suit ground conditions in the field as directed by the Engineer.
- If the Contractor chooses to alter the temporary cantilevered sheet piling design requirements shown on the plan, a design submittal including plan details and calculations will be required for review and acceptance by the Engineer.
- Hatched areas indicate "Removal of Existing Structures."
- Reinforcement bars shall conform to the requirements of AASHTO M322 Grade 60.
- Plan dimensions and details relative to existing structure have been taken from existing plans and are subject to nominal construction variations. Contractor should verify dimensions and make necessary approved adjustments prior to starting construction. Such variations shall not be cause for additional compensation for a change in scope of work, however, the Contractor will be paid for actual quantity furnished and approved by Engineer at unit price bid for the work.
- It shall be the responsibility of the Contractor to divert the stream flow during construction in order to keep the construction area free of water. The method of the water diversion shall be subjected to the approval of the Engineer and the cost shall be included with the cost of the Precast Concrete Box Culverts 12'x3'.
- Cost of Materials and Installation of CLSM, Geocomposite Wall Drain, Welded Studs, and Timber Lagging to be included under "Drilling and Setting Soldier Piles (In Soil)".

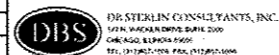
ABBREVIATIONS

F.F. = Front Face
B.F. = Back Face
E.F. = Each Face

ADDENDUM 1 7-18-14

PLOT DATE = \$DATE\$
FILE NAME = \$FILE\$

USER NAME *	DESIGNED - MBC	REVISED -
PLOT SCALE *	DRAWN - BA/DS	REVISED -
PLOT DATE *	CHECKED - WPK	REVISED -
FILE NAME *	DATE - 5/19/2014	REVISED -



**STATE OF ILLINOIS
DEPARTMENT OF TRANSPORTATION**

**STAGE CONSTRUCTION
STRUCTURE NO. 045-0260**

SHEET NO. S2 OF S6 SHEETS

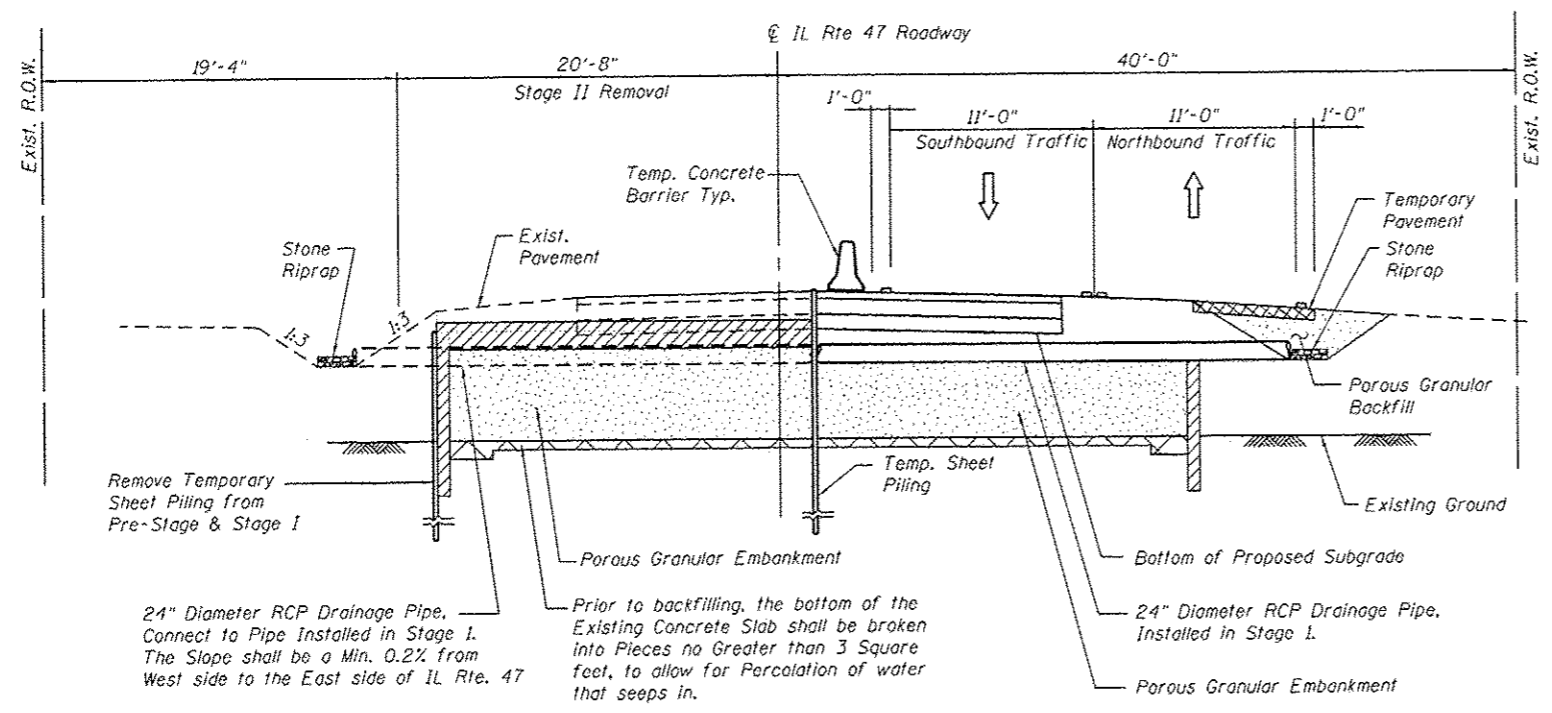
F.A.P. RTE.	SECTION	COUNTY	TOTAL SHEETS	SHEET NO.
345	106-S-N-2	KANE	147	99
CONTRACT NO. 60T09				
FED. ROAD DIST. NO. 1 ILLINOIS FED. AID PROJECT				

TOTAL BILL OF MATERIAL

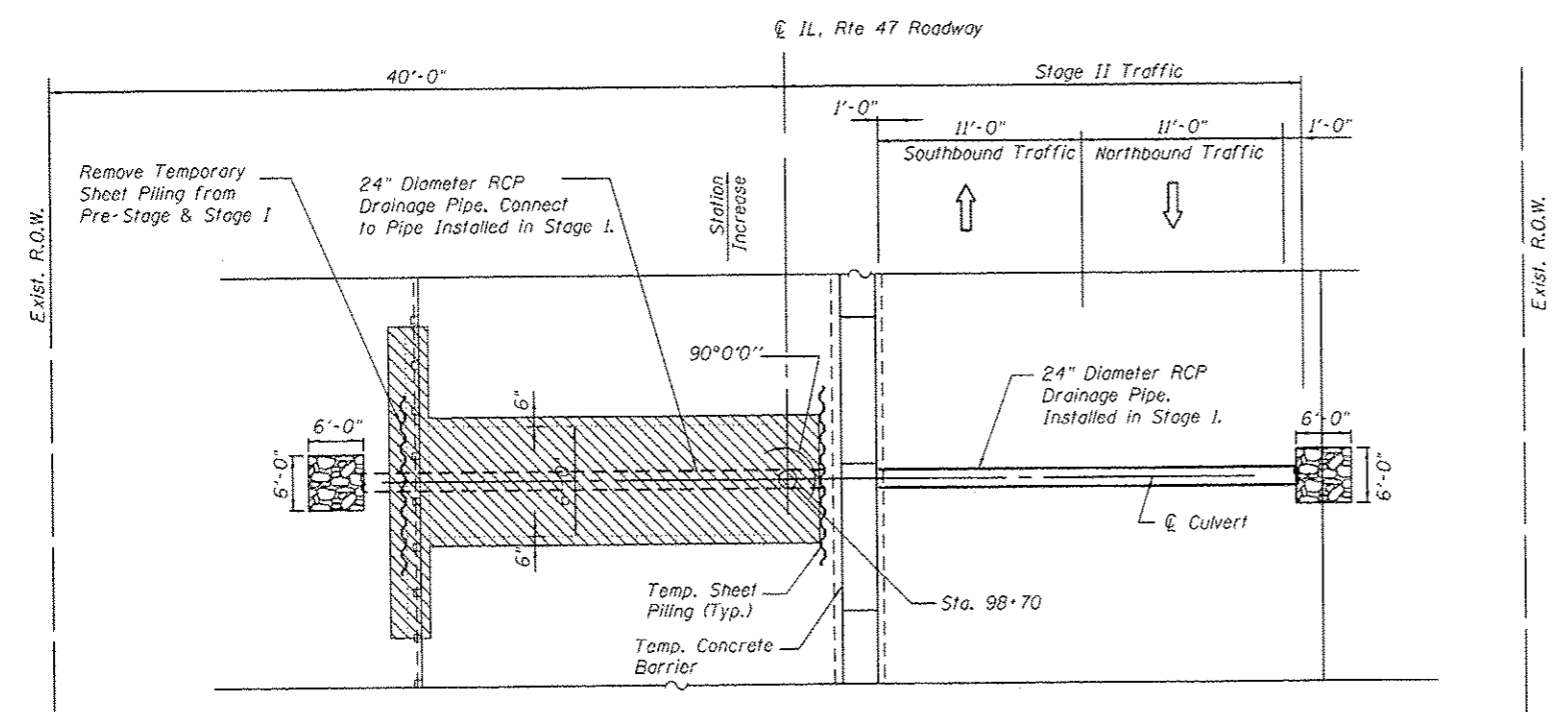
ITEM	UNIT	TOTAL
Porous Granular Embankment	Cu. Yd.	81
Porous Granular Backfill	Cu. Yd.	4.34
Stone Riprap, Class A4	Sq. Yd.	8
Removal of Existing Structures	Each	1
Structure Excavation	Cu. Yd.	38
Temporary Sheet Piling	Sq. Ft.	634

NOTES:

- See Roadway Plan for Temporary Pavement, Paving Details, Maintenance of Traffic, and additional Quantities.
- Limits for removal of the existing culvert include the entire Top Slab, the Headwalls, the Aprons and all wingwalls down to their Footings.
- The bottom of the box culvert shall be broken into pieces as shown in the plans to allow for percolation of water that seeps in. The Cost of this work shall be included in the item "Removal of Existing Structures" The remaining box culvert will be filled with PGE, and the new 24-inch RCP will lay on top of the PGE under the new pavement.
- The Invert of the Proposed 24-inch RCP should be raised to match the flow Line of the respective existing roadside ditches with a 0.2% minimum Slope from the West to the East side of the road.
- All Longitudinal Sections are looking North.
- Plan Dimintions on Details relative to existing plans are subject to nominal construction variations. The Contractor shall field verify existing dimensions and details affecting new construction and make necessary approved adjustments prior to construction or ordering of materials. Such variations shall not be cause for additional compensation for a change in scope of work. However, the Contractor will be paid for the quantity actually furnished at the unit price bid for the work.
- See roadway plans for proposed pavement construction.
- If the Contractor chooses to alter the temporary cantilevered sheet piling design requirements shown on the plans, a design submittal including plan details and calculations will be required for review and acceptance by the Engineer.



LONGITUDINAL SECTION STAGE II
Dimensions Perpendicular to IL Rte 47 Roadway



PLAN - STAGE II
Dimensions Perpendicular to IL Rte 47 Roadway

LEGEND

Removal of Existing Structure

PLOT DATE = 4/24/15
FILE NAME = \$FILEL\$

USER NAME *	DESIGNED - MBC	REVISED -
PLOT SCALE *	DRAWN - BA/DS	REVISED -
PLOT DATE *	CHECKED - WPK	REVISED -
FILE NAME *	DATE - 5/19/2014	REVISED -

DBS DB STERLIN CONSULTANTS, INC.
1221 N. WAGNER DR. SUITE 200
CHICAGO, ILLINOIS 60606
TEL: 312.963.1000 FAX: 312.963.1004

STATE OF ILLINOIS
DEPARTMENT OF TRANSPORTATION

CATTLE PASS REMOVAL DETAILS
STAGE II

SHEET NO. 52 OF 53 SHEETS

F.A.P. R.T.E. 345	SECTION 106-5-N-2	COUNTY KANE	TOTAL SHEETS 147	SHEET NO. 105
FED. ROAD DIST. NO. 1 ILLINOIS FED. AID PROJECT			CONTRACT NO. 60109	

ADDENDUM 1 7-18-14