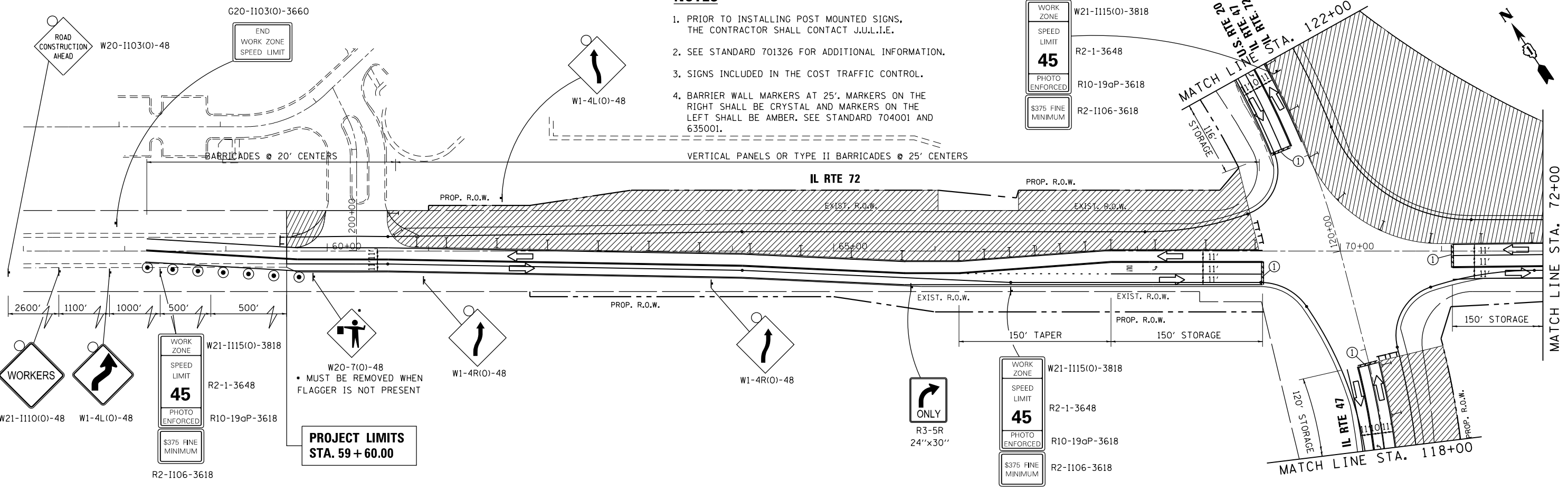


**NOTES**

1. PRIOR TO INSTALLING POST MOUNTED SIGNS, THE CONTRACTOR SHALL CONTACT J.U.L.I.E.
2. SEE STANDARD 701326 FOR ADDITIONAL INFORMATION.
3. SIGNS INCLUDED IN THE COST TRAFFIC CONTROL.
4. BARRIER WALL MARKERS AT 25'. MARKERS ON THE RIGHT SHALL BE CRYSTAL AND MARKERS ON THE LEFT SHALL BE AMBER. SEE STANDARD 704001 AND 635001.

VERTICAL PANELS OR TYPE II BARRICADES @ 25' CENTERS



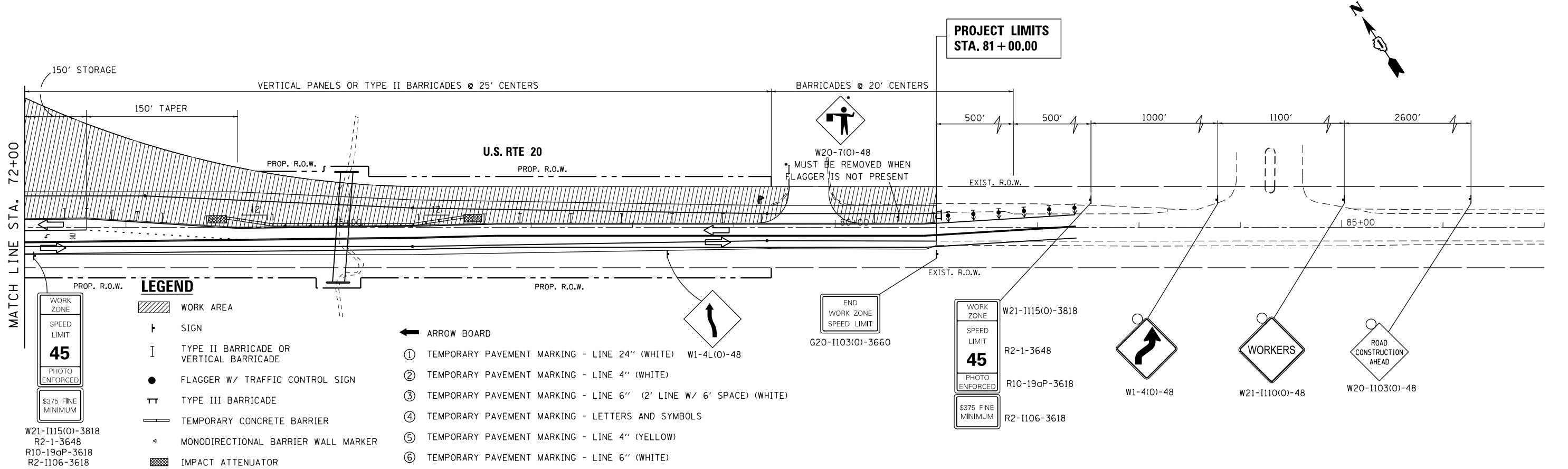
WORKERS

WORK ZONE  
SPEED LIMIT  
**45**  
PHOTO ENFORCED  
\$375 FINE MINIMUM

**PROJECT LIMITS  
STA. 59 + 60.00**

WORK ZONE  
SPEED LIMIT  
**45**  
PHOTO ENFORCED  
\$375 FINE MINIMUM

**PROJECT LIMITS  
STA. 81 + 00.00**



**LEGEND**

- WORK AREA
- SIGN
- TYPE II BARRICADE OR VERTICAL BARRICADE
- FLAGGER W/ TRAFFIC CONTROL SIGN
- TYPE III BARRICADE
- TEMPORARY CONCRETE BARRIER
- MONODIRECTIONAL BARRIER WALL MARKER
- IMPACT ATTENUATOR
- ARROW BOARD
- ① TEMPORARY PAVEMENT MARKING - LINE 24" (WHITE) W1-4L(0)-48
- ② TEMPORARY PAVEMENT MARKING - LINE 4" (WHITE)
- ③ TEMPORARY PAVEMENT MARKING - LINE 6" (2' LINE W/ 6' SPACE) (WHITE)
- ④ TEMPORARY PAVEMENT MARKING - LETTERS AND SYMBOLS
- ⑤ TEMPORARY PAVEMENT MARKING - LINE 4" (YELLOW)
- ⑥ TEMPORARY PAVEMENT MARKING - LINE 6" (WHITE)

W21-1115(0)-3818  
R2-1-3648  
R10-19aP-3618  
R2-1106-3618

WORK ZONE  
SPEED LIMIT  
**45**  
PHOTO ENFORCED  
\$375 FINE MINIMUM

W1-4(0)-48

W21-1110(0)-48

W20-1103(0)-48

**STATE OF ILLINOIS  
DEPARTMENT OF TRANSPORTATION**

**SUGGESTED MAINTENANCE OF TRAFFIC - STAGE 3  
US RTE 20 (SOUTH JUNCTION)**

F.A.P. RTE.	SECTION	COUNTY	TOTAL SHEETS	SHEET NO.
345	106-S-N-2	KANE	147	41
CONTRACT NO. 60T09				

SCALE: 1"=50' SHEET 1 OF 2 SHEETS STA. 59+60 TO STA. 81+00

G:\Projects\ILLINOIS Department of Transportation\PTB 162 - Item 7 - Various Various Work Order No. 11 (South) - US 20 at IL 47 & IL-72\Civil\Cadd Sheets\162T09-sht-staging.dgn