

F.A.P. RTE.	SECTION	COUNTY	TOTAL SHEETS	SHEET NO.
--	2014-019TS	COOK	90	1
		ILLINOIS	CONTRACT NO. 60Y05	

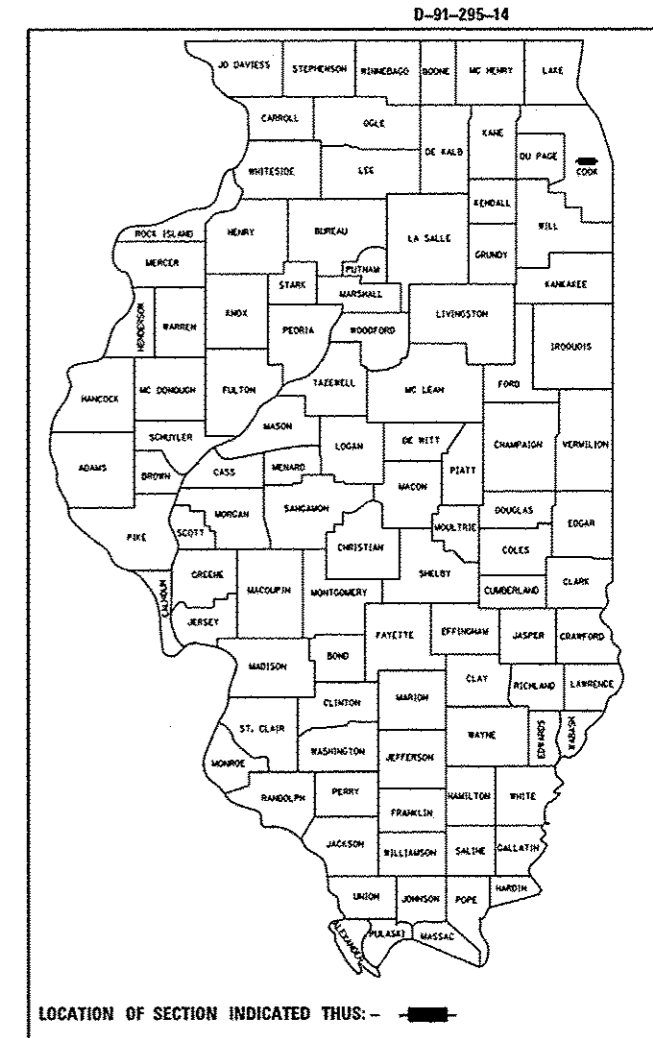
STATE OF ILLINOIS
DEPARTMENT OF TRANSPORTATION
DIVISION OF HIGHWAYS

FOR INDEX OF SHEETS, SEE SHEET NO. 2

PROPOSED
HIGHWAY PLANS

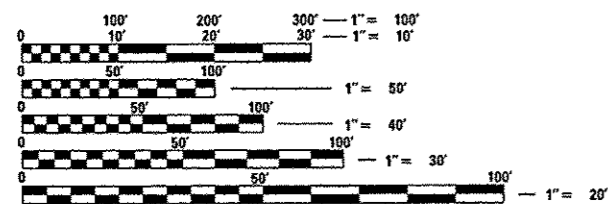
VARIOUS LOCATIONS IN CENTRAL COOK COUNTY /CONTRACT #4
LIGHT EMITTING DIODE (LED) INSTALLATION

2014-019TS
COOK COUNTY
C-91-295-14



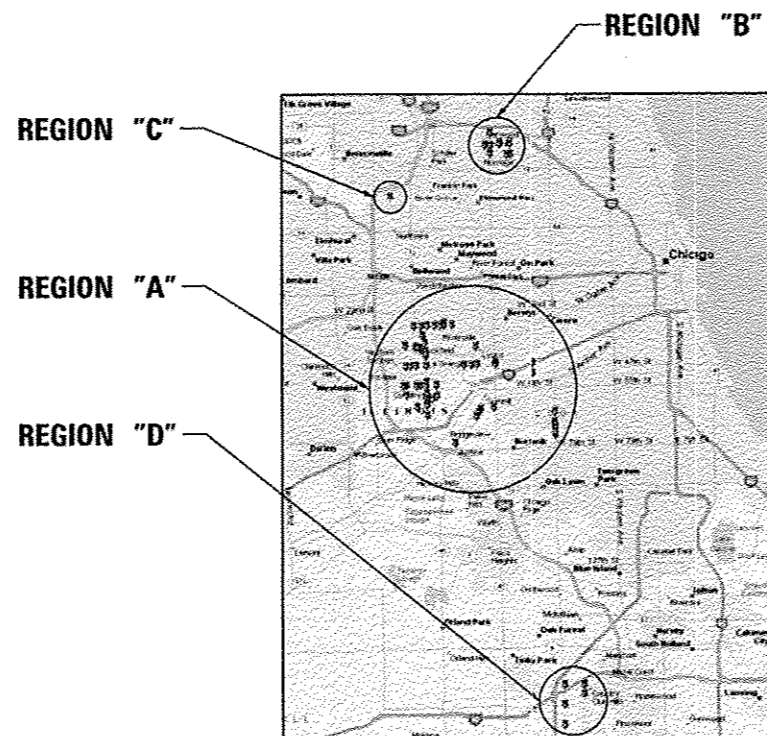
HIGHWAY STANDARDS

- 701006-05 OFF-ROAD OPERATIONS 2L, 2W, 15' (4.5 m) TO 24" (600 mm) FROM PAVEMENT EDGE
- 701101-04 OFF-ROAD OPERATIONS MULTILANE, 15' (4.5 m) TO 24" (600 mm) FROM PAVEMENT EDGE
- 701701-09 URBAN LANE CLOSURE MULTILANE INTERSECTION
- 701901-03 TRAFFIC CONTROL DEVICES
- 720001-01 SIGN PANEL MOUNTING DETAIL
- 720006-04 SIGN PANEL ERECTION DETAILS
- 857001-01 STANDARD PHASE DESIGNATION DIAGRAMS AND PHASE SEQUENCES
- 862001-01 UNINTERRUPTABLE POWER SUPPLY (UPS)
- 880001-01 SPAN WIRE MOUNTED SIGNALS AND FLASHING BEACON INSTALLATION
- 880006-01 TRAFFIC SIGNAL MOUNTING DETAILS



FULL SIZE PLANS HAVE BEEN PREPARED USING STANDARD ENGINEERING SCALES. REDUCED SIZED PLANS WILL NOT CONFORM TO STANDARD SCALES. IN MAKING MEASUREMENTS ON REDUCED PLANS, THE ABOVE SCALES MAY BE USED.

J.U.L.I.E.
JOINT UTILITY LOCATION INFORMATION FOR EXCAVATION
1-800-892-0123
OR 811



COOK COUNTY
LOCATION MAP
SEE SHEET NO. 3 & 4

PROJECT ENGINEER: SUDUD MAHMOUD
PROJECT MANAGER: DARYLE DREW

CONTRACT NO. 60Y05



Signed *Daniel Wirtorzak*
DANIEL WIRTORZAK, P.E. IL. Lic. No. 062-060950
Expires 11-30-2015
Date 5/13/14

STATE OF ILLINOIS
DEPARTMENT OF TRANSPORTATION
DIVISION OF HIGHWAYS

SUBMITTED May 16 20 14
John D. Baranzola
DEPUTY DIRECTOR OF HIGHWAYS, REGION ENGINEER

June 27 20 14
John D. Baranzola, P.E.
ENGINEER OF DESIGN AND ENVIRONMENT

June 27 20 14
Omer Osman, P.E.
DIRECTOR OF HIGHWAYS, CHIEF ENGINEER



PRINTED BY THE AUTHORITY
OF THE STATE OF ILLINOIS