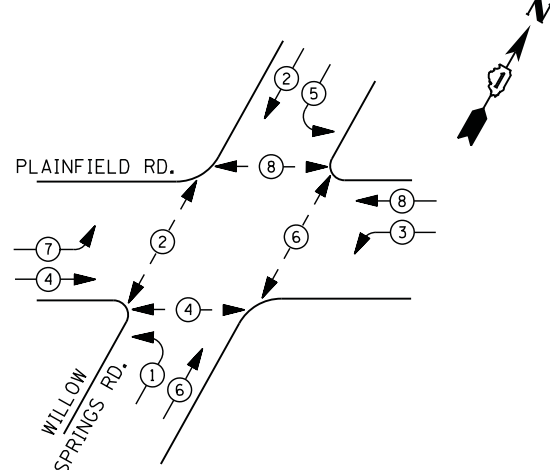
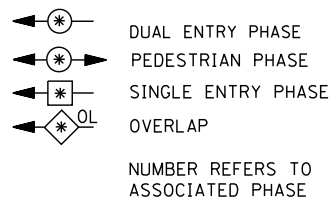




CONTROLLER SEQUENCE

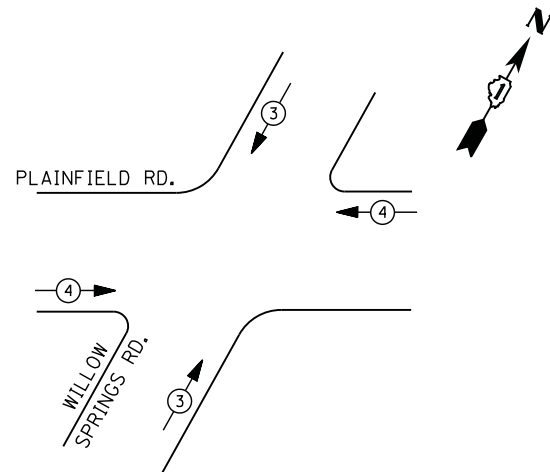


LEGEND



- ① REPLACE 10 FT. PAINTED POST. RE-USE EXISTING
TYPE A CONCRETE FOUNDATION.
- ② REPLACE 14 FT. PAINTED POST. RE-USE EXISTING
TYPE A CONCRETE FOUNDATION.
- ③ REPLACE 15 FT. PAINTED POST. RE-USE EXISTING
TYPE A CONCRETE FOUNDATION.
- ④ REPLACE 16 FT. PAINTED POST. RE-USE EXISTING
TYPE A CONCRETE FOUNDATION.
- ⑤ REPLACE 18 FT. PAINTED POST. RE-USE EXISTING
TYPE A CONCRETE FOUNDATION.

PHASE DESIGNATION DIAGRAM



EMERGENCY VEHICLE PREEMPTION SEQUENCE

| EMERGENCY VEHICLE PREEMPTORS | | |
|------------------------------|---|---|
| EMERGENCY VEHICLE PREEMPTOR | 3 | 4 |
| MOVEMENT | | |

**I. D. O. T.
TRAFFIC SIGNAL INSTALLATION
ELECTRICAL SERVICE REQUIREMENTS**

| TYPE | NO. LAMPS | WATTAGE | | % OPERATIONS | TOTAL WATTAGE |
|----------------|-----------|---------|-----|--------------|---------------|
| | | INCAND. | LED | | |
| SIGNAL (RED) | 8 | 135 | 17 | 0.50 | 68 |
| (YELLOW) | 8 | 135 | 25 | 0.25 | 50 |
| (GREEN) | 8 | 135 | 15 | 0.25 | 30 |
| ARROW | 16 | 135 | 12 | 0.10 | 20 |
| PED. SIGNAL | 8 | 90 | 25 | 1.00 | 200 |
| CONTROLLER | 1 | 100 | 100 | 1.00 | 100 |
| ILLUM. SIGN | | 252 | 25 | 0.05 | |
| VIDEO SYSTEM | | 150 | - | 1.00 | |
| TOTAL = | | | | | 468 |

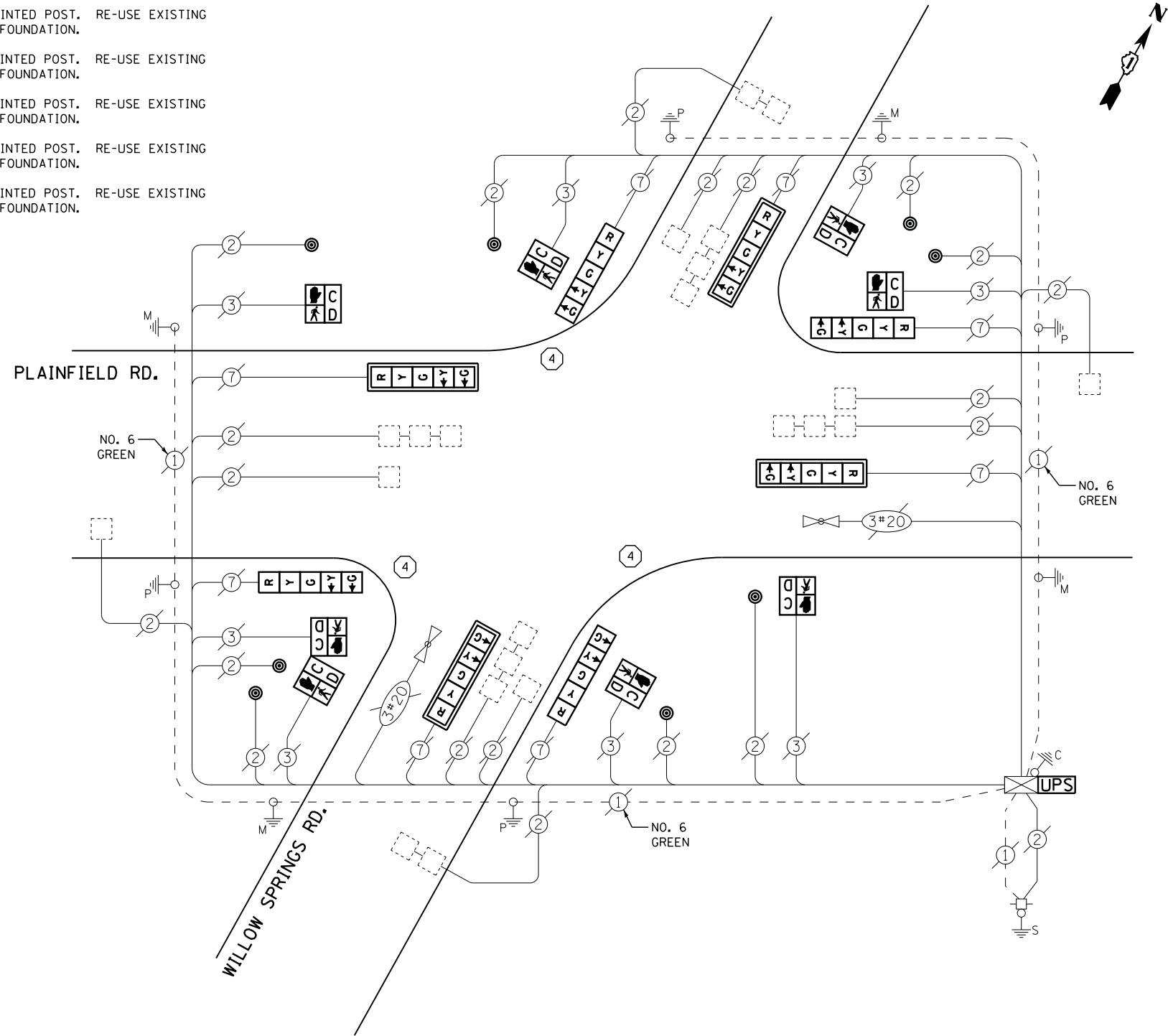
ENERGY COSTS- BILLED TO: IDOT DISTRICT 1
201 WEST CENTER COURT
SCHAUMBURG, IL 60196-1096

ENERGY SUPPLY - CONTACT ILYAS MOHIUDDIN
PHONE 708-235-2692
COMMONWEALTH EDISON

SCHEDULE OF QUANTITIES

| QUANTITY | UNIT | ITEM |
|----------|------|---------------------------------------------------------------------------|
| 1 | EACH | MAINTENANCE OF EXISTING TRAFFIC SIGNAL INSTALLATION |
| 3 | EACH | TRAFFIC SIGNAL POST, GALVANIZED STEEL 16 FT. |
| 4 | EACH | SIGNAL HEAD, LED, 1-FACE, 5-SECTION, BRACKET MOUNTED |
| 4 | EACH | SIGNAL HEAD, LED, 1-FACE, 5-SECTION, MAST-ARM MOUNTED |
| 6 | EACH | PEDESTRIAN SIGNAL HEAD, LED, 1-FACE, BRACKET MOUNTED WITH COUNTDOWN TIMER |
| 1 | EACH | PEDESTRIAN SIGNAL HEAD, LED, 2-FACE, BRACKET MOUNTED WITH COUNTDOWN TIMER |
| 4 | EACH | TRAFFIC SIGNAL BACKPLATE, LOUVERED, ALUMINUM |
| 8 | EACH | PEDESTRIAN PUSH-BUTTON |
| 1 | EACH | MODIFY EXISTING CONTROLLER CABINET |
| 1 | EACH | REMOVE EXISTING TRAFFIC SIGNAL EQUIPMENT |
| 2 | EACH | REMOVE AND REPLACE ANCHOR BOLTS |
| 1 | EACH | UNINTERRUPTABLE POWER SUPPLY, SPECIAL |

CABLE PLAN



REMOVAL OF EXISTING TRAFFIC SIGNAL EQUIPMENT

THE FOLLOWING ITEMS SHALL BE REMOVED BY THE CONTRACTOR AND SHALL BE DISPOSED OF BY THEM OUTSIDE THE RIGHT-OF-WAY AT THEIR EXPENSE. THE SALVAGE VALUE OF THE REMOVED EQUIPMENT SHALL BE REFLECTED IN THE CONTRACT BID PRICE.

| | | |
|---|------|--------------------------|
| 8 | EACH | SIGNAL HEAD, 5 - SECTION |
| 4 | EACH | TRAFFIC SIGNAL BACKPLATE |
| 8 | EACH | PEDESTRIAN SIGNAL HEAD |
| 8 | EACH | PEDESTRIAN PUSH-BUTTON |
| 3 | EACH | SIGNAL POST |

**STATE OF ILLINOIS
DEPARTMENT OF TRANSPORTATION**

**WILLOW SPRINGS ROAD AND PLAINFIELD ROAD
SCHEDULE OF QUANTITIES, CABLE PLAN, PHASE DESIGNATION DIAGRAM
AND EMERGENCY VEHICLE PREEMPTION SEQUENCE**

| F.A. RTE. | SECTION | COUNTY | TOTAL SHEETS | SHEET NO. |
|--------------------|------------|--------|--------------|-----------|
| | 2014-019TS | COOK | 90 | 44 |
| CONTRACT NO. 60Y05 | | | | |

TS #5935
COUNYSIDE

| | | |
|----------------------------|---------------|-----------|
| USER NAME = .USERNAME. | DESIGNED - DW | REVISED - |
| PLOT SCALE = 20.000' / in. | DRAWN - CC | REVISED - |
| PLOT DATE = 5/13/2014 | CHECKED - KMM | REVISED - |
| | DATE - | REVISED - |