

F.A.P. RTE.	SECTION	COUNTY	TOTAL SHEETS	SHEET NO.
	2014-032TS	COOK	68	1
		ILLINOIS	CONTRACT NO. 60Y18	

STATE OF ILLINOIS
DEPARTMENT OF TRANSPORTATION
DIVISION OF HIGHWAYS

PROPOSED
HIGHWAY PLANS

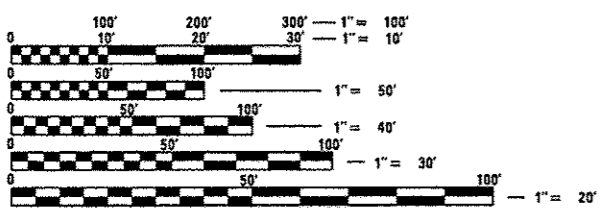
VARIOUS LOCATIONS IN CENTRAL COOK COUNTY #5
LIGHT EMITTING DIODE (LED) INSTALLATION
SECTION 2012-032TS
COOK COUNTY

C-91-309-14

FOR INDEX OF SHEETS, SEE SHEET NO. 2

HIGHWAY STANDARDS

- 701006-05 OFF-ROAD OPERATIONS, 2L, 2W, 15' (4.5m) TO 24" (600mm) FROM PAVEMENT EDGE
- 701101-04 OFF-ROAD OPERATIONS MULTILANE, 15' (4.5m) TO 24" (600mm) FROM PAVEMENT EDGE
- 701701-09 URBAN LANE CLOSURE MULTILANE INTERSECTION
- 701901-03 TRAFFIC CONTROL DEVICES
- 720001-01 SIGN PANEL MOUNTING DEVICES
- 720006-04 SIGN PANEL ERECTION DETAILS
- 857001-01 STANDARD PHASE DESIGNATION DIAGRAMS AND PHASE SEQUENCES
- 862001-01 UNINTERRUPTIBLE POWER SUPPLY (UPS)
- 880006-01 TRAFFIC SIGNAL MOUNTING DETAILS

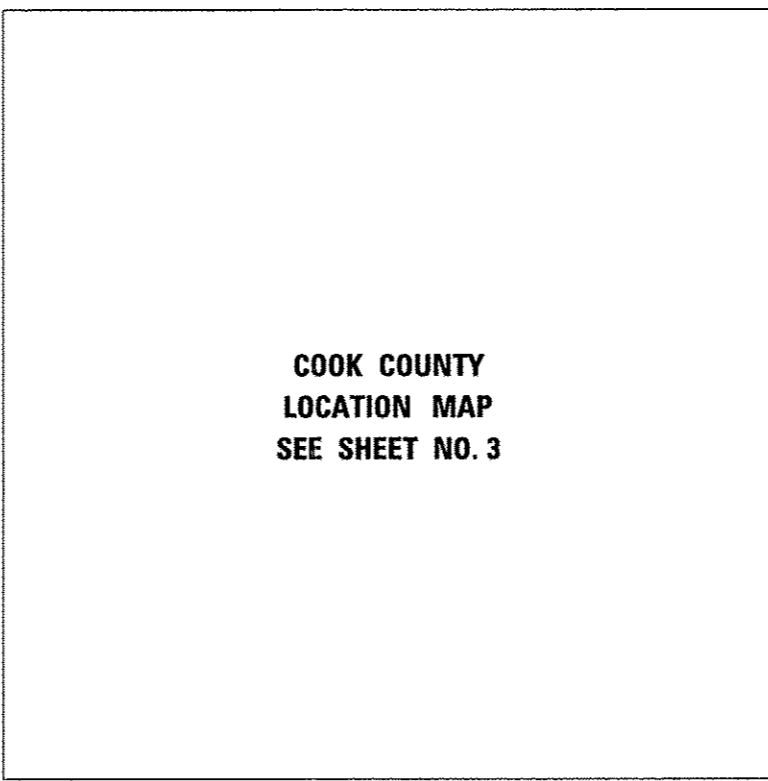


FULL SIZE PLANS HAVE BEEN PREPARED USING STANDARD ENGINEERING SCALES. REDUCED SIZED PLANS WILL NOT CONFORM TO STANDARD SCALES. IN MAKING MEASUREMENTS ON REDUCED PLANS, THE ABOVE SCALES MAY BE USED.

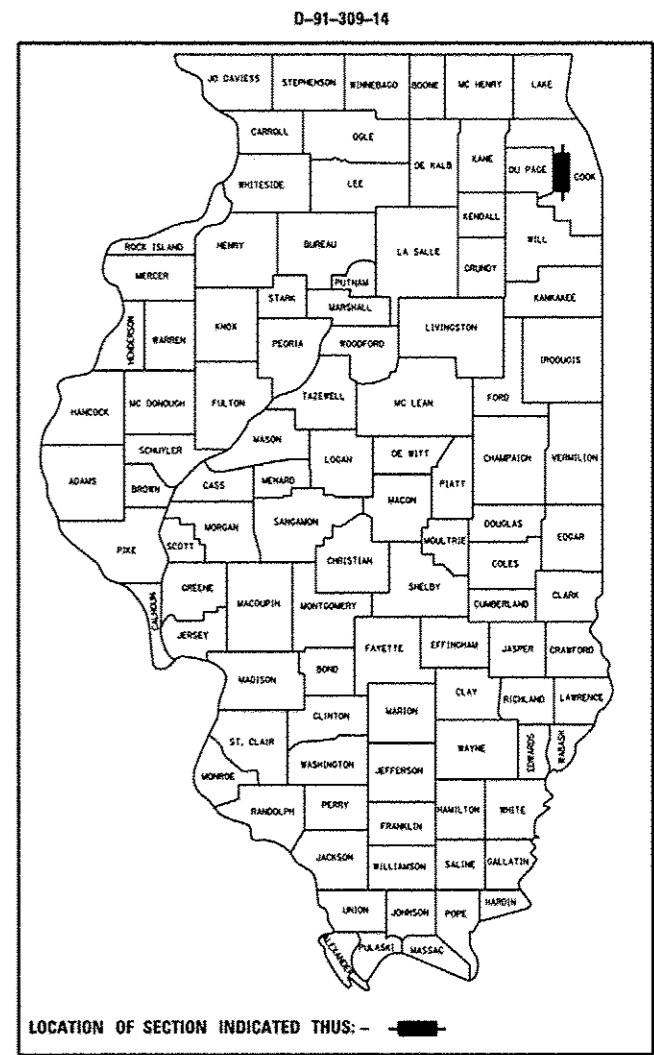
J.U.L.I.E.
 JOINT UTILITY LOCATION INFORMATION FOR EXCAVATION
 1-800-892-0123
 OR 811

PROJECT ENGINEER: SHAR-DAY SMITH
 PROJECT MANAGER: SUDUD MAHMOUD

CONTRACT NO. 60Y18



COOK COUNTY
 LOCATION MAP
 SEE SHEET NO. 3



SIGNED *Isaac Yun*
 ISAAC YUN, P.E. 062-062257
 EXP. 11-30-2015
 DATE 5/14/2014

STATE OF ILLINOIS
 DEPARTMENT OF TRANSPORTATION
 DIVISION OF HIGHWAYS

SUBMITTED *May 14 2014*
John J. Johnson
 DEPUTY DIRECTOR OF HIGHWAYS, REGION ENGINEER

June 27 2014
John D. Baranzelli P.E.
 ENGINEER OF DESIGN AND ENVIRONMENT

June 27 2014
Omer Osman P.E.
 DIRECTOR OF HIGHWAYS, CHIEF ENGINEER



**PRINTED BY THE AUTHORITY
 OF THE STATE OF ILLINOIS**