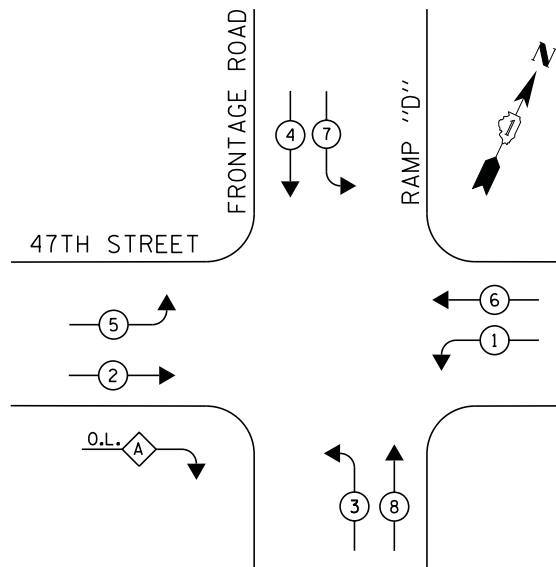
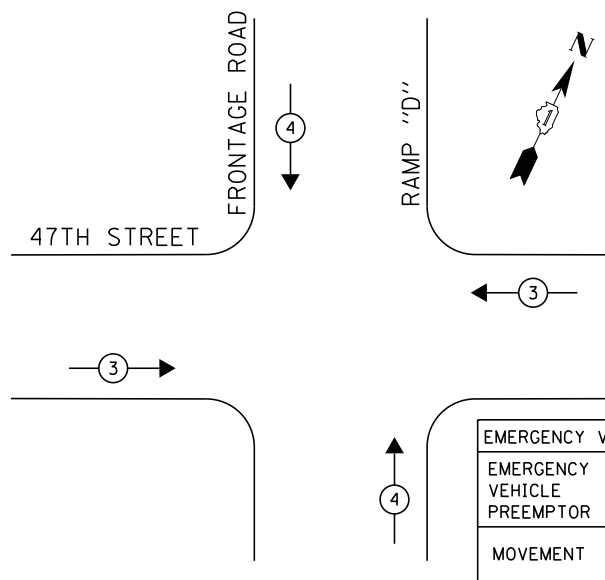


CONTROLLER SEQUENCE

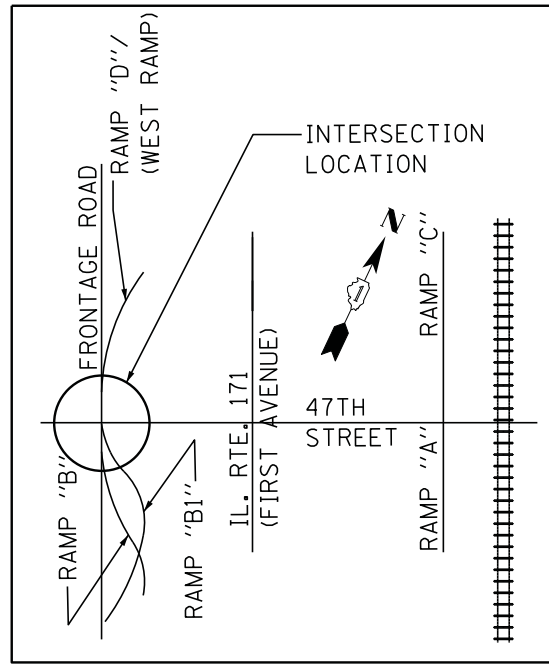


PHASE DESIGNATION DIAGRAM

EMERGENCY VEHICLE PREEMPTION SEQUENCE



EMERGENCY VEHICLE PREEMPTOR		
EMERGENCY VEHICLE PREEMPTOR	3	4
MOVEMENT	↔	↕



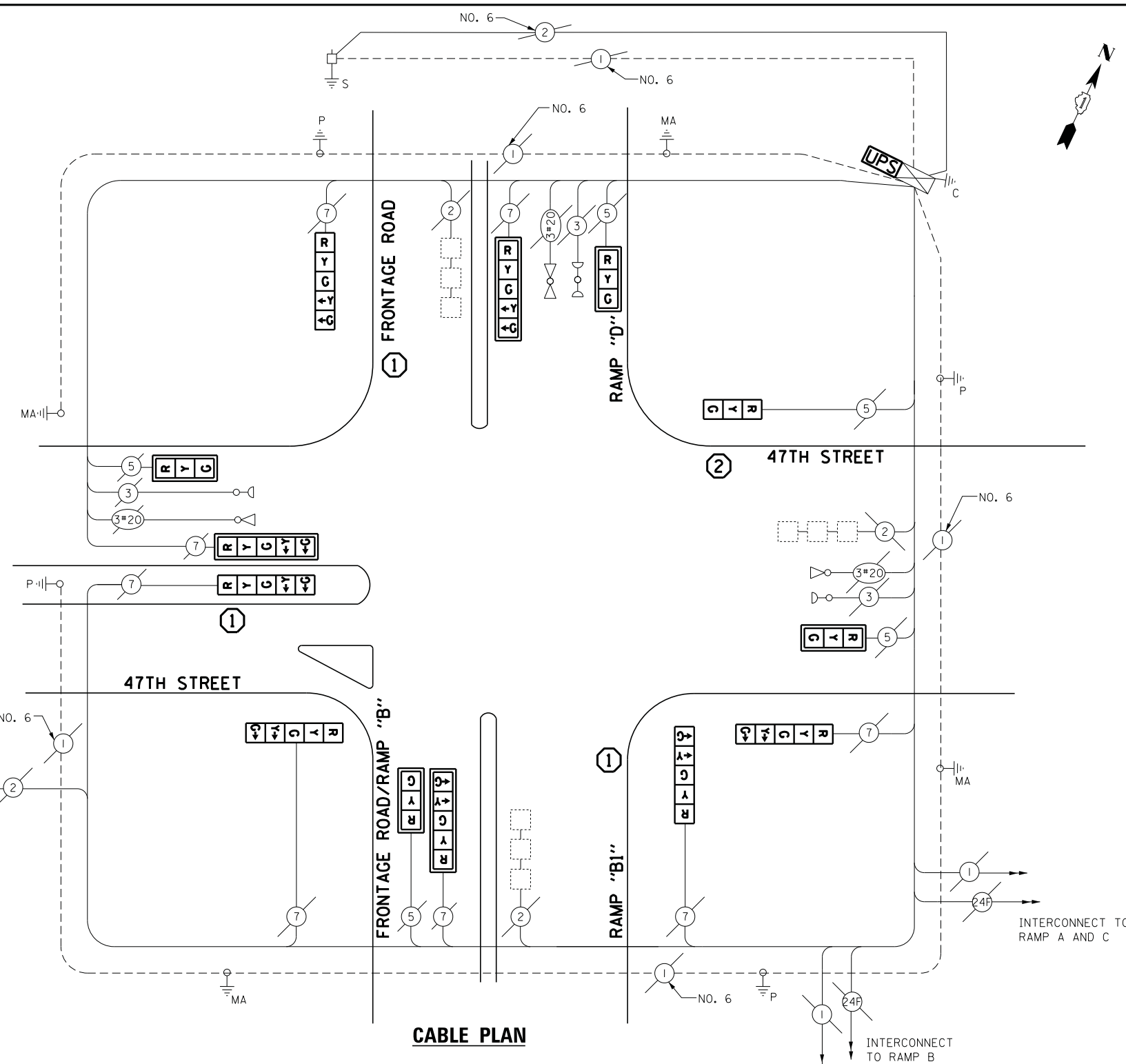
LOCATION MAP
N.T.S.

RIGHT TURN OVERLAP PHASE DESIGNATION

OVERLAP LETTER	PERMISSIVE PHASE	PROTECTED PHASE
A	= 2	+ 3

LEGEND

- ⊙ * DUAL ENTRY PHASE
 - ⊙ * SINGLE ENTRY PHASE
 - ◇ O.L. OVERLAP
 - ⊙ * PEDESTRIAN PHASE
 - * NUMBER REFERS TO ASSOCIATED PHASE
- ① REPLACE 16FT. PAINTED POST, RE-USE EXISTING FOUNDATION
- ② REPLACE 14FT. PAINTED POST, RE-USE EXISTING FOUNDATION



CABLE PLAN

REMOVAL OF EXISTING TRAFFIC SIGNAL EQUIPMENT

THE FOLLOWING ITEMS SHALL BE REMOVED BY THE CONTRACTOR AND SHALL BE DISPOSED OF BY THEM OUTSIDE THE RIGHT-OF-WAY AT THEIR EXPENSE. THE SALVAGE VALUE OF THE REMOVED EQUIPMENT SHALL BE REFLECTED IN THE CONTRACT BID PRICE.

4	EACH	TRAFFIC SIGNAL POST
8	EACH	SIGNAL HEAD, 5-SECTION
5	EACH	SIGNAL HEAD, 3-SECTION
7	EACH	TRAFFIC SIGNAL BACKPLATE

ECONOLITE ASC/2S-1000
CONTROLLER ON-SITE

TRAFFIC SIGNAL EQUIPMENT
SHALL BE ECONOLITE TO
MATCH THE ADJACENT
EXISTING SYSTEM

TS# 11805
MC COOK

I.D.O.T. TRAFFIC SIGNAL INSTALLATION ELECTRICAL SERVICE REQUIREMENTS					TOTAL WATTAGE
TYPE	NO LAMPS	WATTAGE		%OPERATION	
SIGNAL (RED)	13	INCAND.	LED	0.5	110.5
(YELLOW)	13			0.25	81.25
(GREEN)	13			0.25	48.75
ARROW	16			0.10	19.2
PED. SIGNAL	-			1.00	-
CONTROLLER	1			1.00	100
ILLUM. SIGN	-			0.05	-
VIDEO SYSTEM	-			1.00	-
FLASHER	-			-	-
ENERGY COSTS TO:					TOTAL = 359.70
ILLINOIS DEPARTMENT OF TRANSPORTATION 201 WEST CENTER COURT SCHAUMBURG, ILLINOIS 60196-1096 ENERGY SUPPLY CONTACT: ILYAS MOHIUDDIN PHONE: (708) 235-2692 COMPANY: COMMONWEALTH EDISON					

SCHEDULE OF QUANTITIES

QUANTITY	UNIT	ITEM
1	EACH	MAINTENANCE OF EXISTING TRAFFIC SIGNAL INSTALLATION
1	EACH	TRAFFIC SIGNAL POST, GALVANIZED STEEL 14 FT.
3	EACH	TRAFFIC SIGNAL POST, GALVANIZED STEEL 16 FT.
4	EACH	SIGNAL HEAD, LED, 1-FACE, 3-SECTION, MAST ARM MOUNTED
1	EACH	SIGNAL HEAD, LED, 1-FACE, 3-SECTION, BRACKET MOUNTED
5	EACH	SIGNAL HEAD, LED, 1-FACE, 5-SECTION, BRACKET MOUNTED
3	EACH	SIGNAL HEAD, LED, 1-FACE, 5-SECTION, MAST ARM MOUNTED
7	EACH	TRAFFIC SIGNAL BACKPLATE, LOUVERED, ALUMINUM
1	EACH	MODIFY EXISTING CONTROLLER CABINET
1	EACH	REMOVE EXISTING TRAFFIC SIGNAL EQUIPMENT
2	EACH	REMOVE AND REPLACE ANCHOR BOLTS
1	EACH	UNINTERRUPTABLE POWER SUPPLY, SPECIAL

STATE OF ILLINOIS
DEPARTMENT OF TRANSPORTATION

SCHEDULE OF QUANTITIES, CABLE PLAN, PHASE DESIGNATION DIAGRAM, AND
EMERGENCY VEHICLE PREEMPTION SEQUENCE
IL. 171 /1ST AVENUE FRONTAGE ROAD AND 47TH STREET WEST RAMP

SCALE: NTS SHEET NO. 1 OF 1 SHEETS STA. N/A TO STA. N/A

F.A.P. RTE.	SECTION	COUNTY	TOTAL SHEETS	SHEET NO.
	2014-032T5	COOK	68	19
CONTRACT NO. 60Y18				
ILLINOIS FED. AID PROJECT				

FILE NAME =	USER NAME = .USER.	DESIGNED -	M.A./V.O.	REVISED -	
J:\13155\Work Order 2\DCN\CADD Sheets\060Y18-sht-ts-03.11805.dgn		DRAWN -	Y.J./E.C.	REVISED -	
		CHECKED -	I.Y.	REVISED -	
		DATE -	5/16/2014	REVISED -	