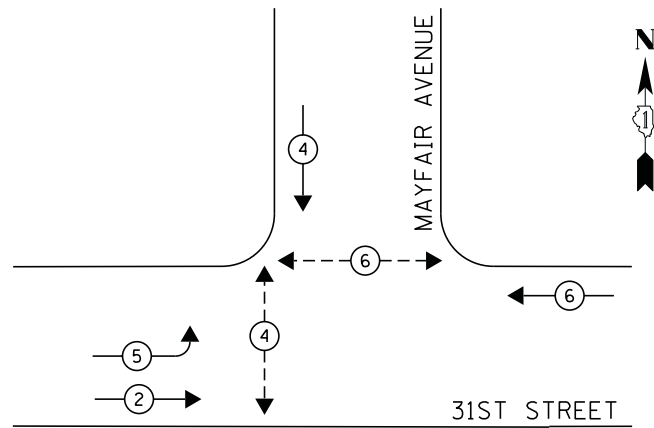
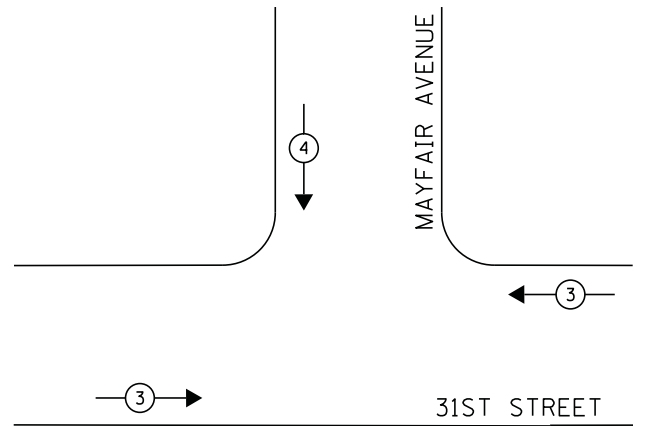


**CONTROLLER SEQUENCE**



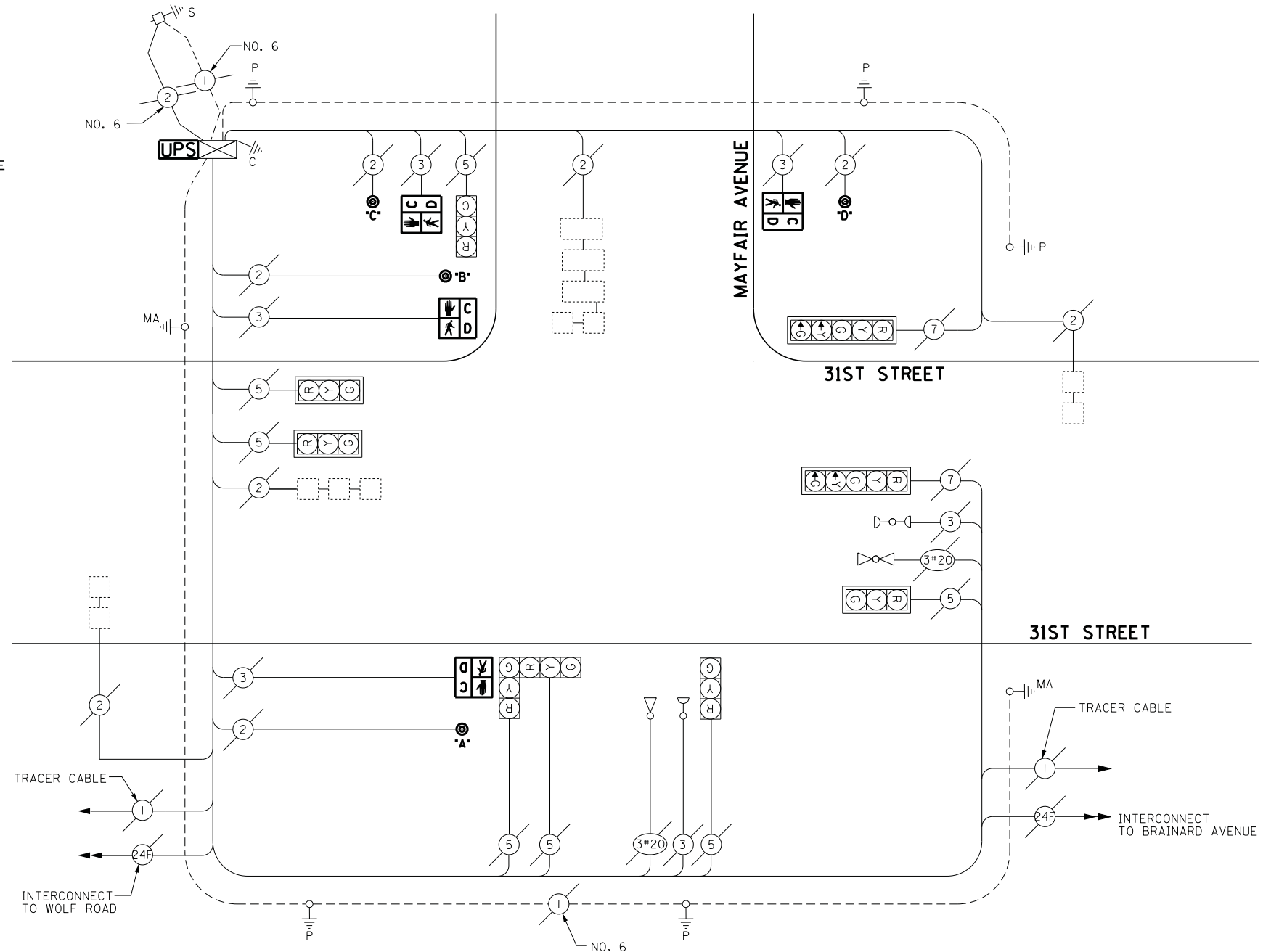
**PHASE DESIGNATION DIAGRAM**

**EMERGENCY VEHICLE PREEMPTION SEQUENCE**



PROPOSED EMERGENCY VEHICLE PREEMPTOR		
EMERGENCY VEHICLE PREEMPTOR	3	4
MOVEMENT	↔	↓

- LEGEND**
- ← \* → DUAL ENTRY PHASE
  - ← \* → SINGLE ENTRY PHASE
  - ◊ O.L. OVERLAP
  - ← \* → PEDESTRIAN PHASE  
NUMBER REFERS TO ASSOCIATED PHASE



**CABLE PLAN**

ECONOLITE ASC/2S-1000  
CONTROLLER ON-SITE

TRAFFIC SIGNAL EQUIPMENT  
SHALL BE ECONOLITE TO  
MATCH THE ADJACENT  
EXISTING SYSTEM

**NOTE:**

PUSH BUTTON "A & B" PLACES A CALL IN PHASE 4  
PUSH BUTTON "C & D" PLACES A CALL IN PHASE 6

QUANTITY	UNIT	ITEM
1	EACH	MAINTENANCE OF EXISTING TRAFFIC SIGNAL INSTALLATION
4	EACH	PEDESTRIAN SIGNAL HEAD, LED, 1-FACE, BRACKET MOUNTED WITH COUNTDOWN TIMER
1	EACH	MODIFY EXISTING CONTROLLER CABINET
1	EACH	REMOVE EXISTING TRAFFIC SIGNAL EQUIPMENT
1	EACH	UNINTERRUPTABLE POWER SUPPLY, SPECIAL
4	EACH	PEDESTRIAN PUSH-BUTTON, NON-LATCHING

**REMOVAL OF EXISTING TRAFFIC SIGNAL EQUIPMENT**

THE FOLLOWING ITEMS SHALL BE REMOVED BY THE CONTRACTOR AND SHALL BE DISPOSED OF BY THEM OUTSIDE THE RIGHT-OF-WAY AT THEIR EXPENSE. THE SALVAGE VALUE OF THE REMOVED EQUIPMENT SHALL BE REFLECTED IN THE CONTRACT BID PRICE.

- 4 EACH PEDESTRIAN SIGNAL HEAD
- 4 EACH PEDESTRIAN PUSH-BUTTON

I.D.O.T. TRAFFIC SIGNAL INSTALLATION ELECTRICAL SERVICE REQUIREMENTS					TOTAL WATTAGE
TYPE	NO LAMPS	WATTAGE		%OPERATION	
		INCAND.	LED		
SIGNAL (RED)	9		17	0.5	76.50
(YELLOW)	9		25	0.25	56.25
(GREEN)	9		15	0.25	33.75
ARROW	4		12	0.10	4.80
PED. SIGNAL	4		25	1.00	100
CONTROLLER	100		100	1.00	100
ILLUM. SIGN			-	-	-
VIDEO SYSTEM			-	-	-
FLASHER			-	-	-
ENERGY COSTS TO:					TOTAL = 371.30
ILLINOIS DEPARTMENT OF TRANSPORTATION 201 WEST CENTER COURT SCHAUMBURG, ILLINOIS 60196-1096 ENERGY SUPPLY CONTACT: JOE STACHO PHONE: (630) 424-5704 COMPANY: COMMONWEALTH EDISON					

FILE NAME =	USER NAME = .USER.	DESIGNED - M.A./V.O.	REVISED - I.Y. 6/2/2014
J:\13155\Work Order 2\DCN\CADD Sheets\Revision 1\DI60Y18-sht-ts-14.21175-rev1.dgn		DRAWN - Y.J./E.C.	REVISED -
		CHECKED - I.Y.	REVISED -
		DATE - 5/16/2014	REVISED -

STATE OF ILLINOIS  
DEPARTMENT OF TRANSPORTATION

SCHEDULE OF QUANTITIES, CABLE PLAN, PHASE DESIGNATION DIAGRAM, AND  
EMERGENCY VEHICLE PREEMPTION SEQUENCE  
31ST STREET AT MAYFAIR AVENUE

SCALE: NTS SHEET NO. 1 OF 1 SHEETS STA. N/A TO STA. N/A

F.A.P. RTE.	SECTION	COUNTY	TOTAL SHEETS	SHEET NO.
	2014-032T5	COOK	68	30
CONTRACT NO. 60Y18				
ILLINOIS FED. AID PROJECT				

TS# 21175  
WESTCHESTER