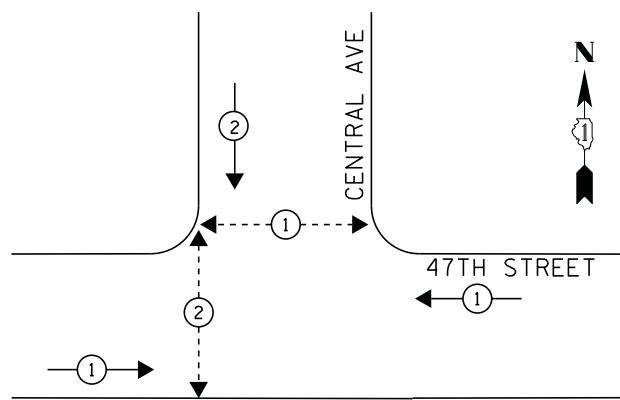
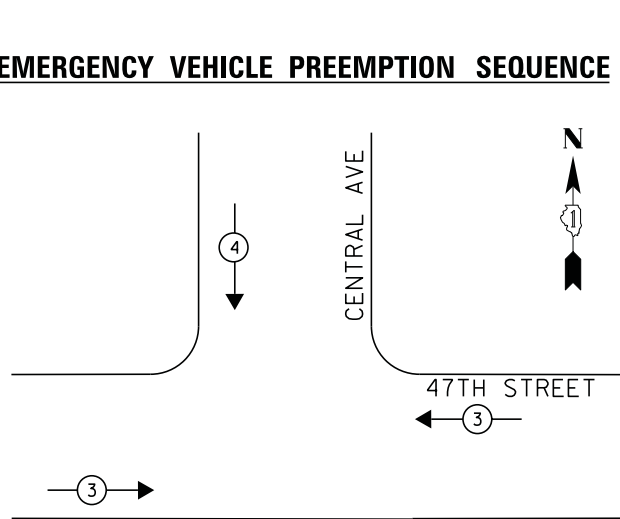


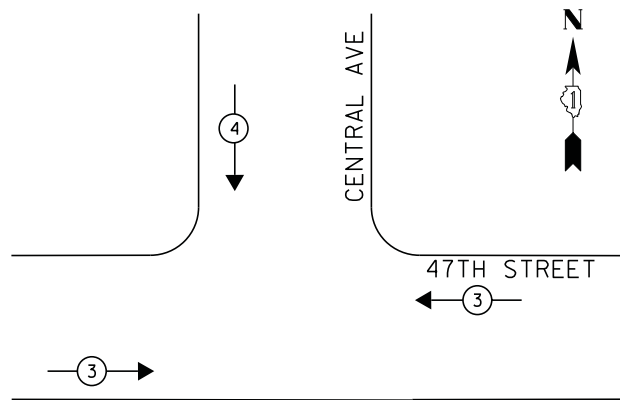
CONTROLLER SEQUENCE



PHASE DESIGNATION DIAGRAM



EMERGENCY VEHICLE PREEMPTION SEQUENCE



EMERGENCY VEHICLE PREEMPTOR		
EMERGENCY VEHICLE PREEMPTOR	3	4
MOVEMENT	↔	↓

- LEGEND**
- ⊙ DUAL ENTRY PHASE
 - ⊠ SINGLE ENTRY PHASE
 - ◇ O.L. OVERLAP
 - ⊙ PEDESTRIAN PHASE
 - * NUMBER REFERS TO ASSOCIATED PHASE

① REPLACE 14FT. PAINTED POST, RE-USE EXISTING FOUNDATION

NOTES:

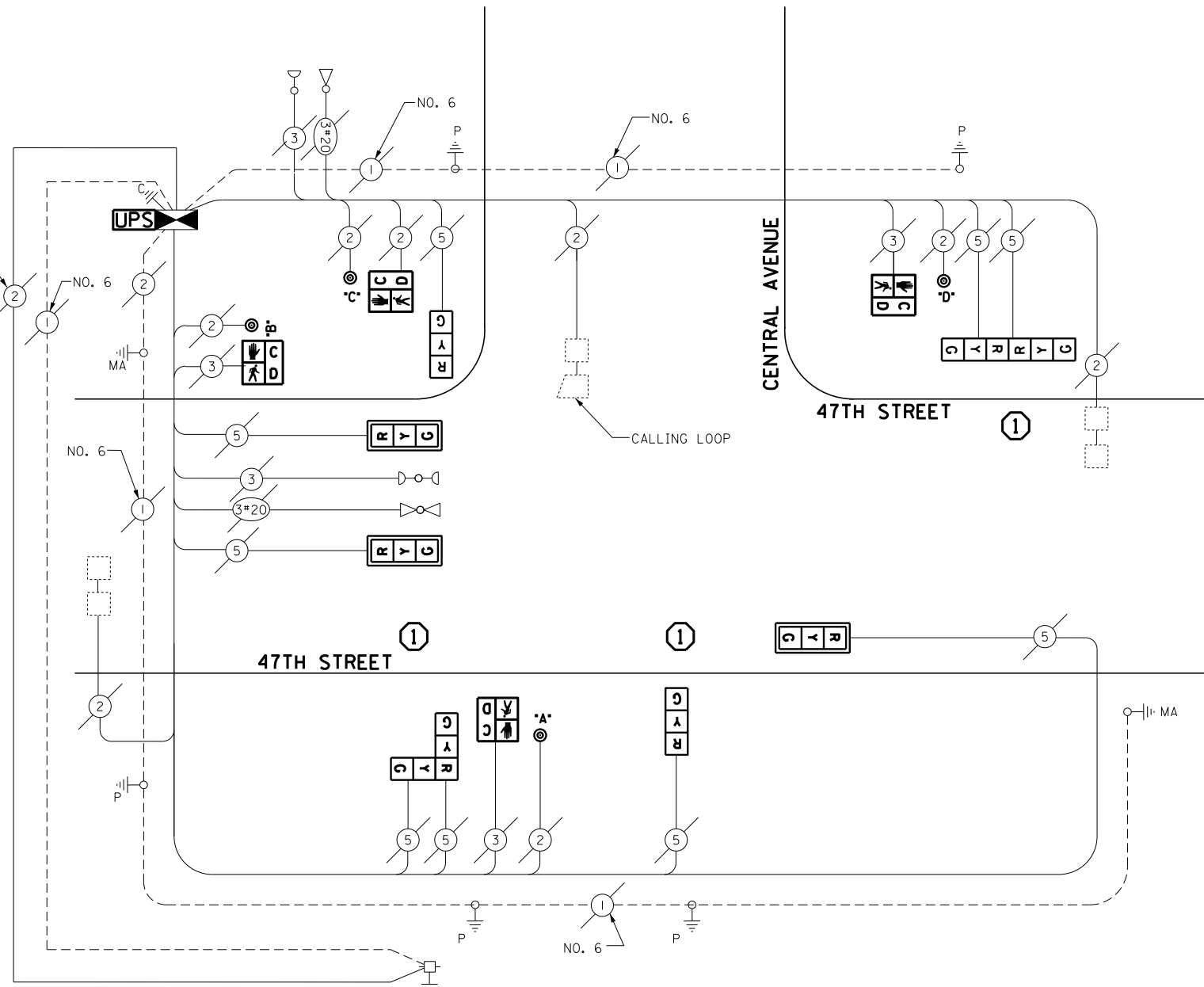
PUSH BUTTON "A & B" PLACES A CALL IN PHASE 2
PUSH BUTTON "C & D" PLACES A CALL IN PHASE 1

RELOCATION OF EMERGENCY VEHICLE PREEMPTION INCLUDED IN COST OF REPLACING SIGNAL POSTS

SCHEDULE OF QUANTITIES

QUANTITY	UNIT	ITEM
1	EACH	MAINTENANCE OF EXISTING TRAFFIC SIGNAL INSTALLATION
1	EACH	FULL-ACTUATED CONTROLLER AND TYPE IV CABINET
3	EACH	TRAFFIC SIGNAL POST, GALVANIZED STEEL 14 FT.
3	EACH	SIGNAL HEAD, LED, 1-FACE, 3-SECTION, MAST-ARM MOUNTED
2	EACH	SIGNAL HEAD, LED, 1-FACE, 3-SECTION, BRACKET MOUNTED
2	EACH	SIGNAL HEAD, LED, 2-FACE, 3-SECTION, BRACKET MOUNTED
4	EACH	PEDESTRIAN SIGNAL HEAD, LED, 1-FACE, BRACKET MOUNTED WITH COUNTDOWN TIMER
3	EACH	TRAFFIC SIGNAL BACKPLATE, LOUVERED, ALUMINUM
3	EACH	INDUCTIVE LOOP DETECTOR
1	EACH	REMOVE EXISTING TRAFFIC SIGNAL EQUIPMENT
2	EACH	REMOVE AND REPLACE ANCHOR BOLTS
1	EACH	UNINTERRUPTIBLE POWER SUPPLY, SPECIAL
4	EACH	PEDESTRIAN PUSH-BUTTON, NON-LATCHING

CABLE PLAN



REMOVAL OF EXISTING TRAFFIC SIGNAL EQUIPMENT

THE FOLLOWING ITEMS SHALL BE REMOVED BY THE CONTRACTOR AND SHALL BE DISPOSED OF BY THEM OUTSIDE THE RIGHT-OF-WAY AT THEIR EXPENSE. THE SALVAGE VALUE OF THE REMOVED EQUIPMENT SHALL BE REFLECTED IN THE CONTRACT BID PRICE.

4	EACH	PEDESTRIAN SIGNAL HEAD
4	EACH	PEDESTRIAN PUSH-BUTTON
3	EACH	TRAFFIC SIGNAL POST
9	EACH	TRAFFIC SIGNAL HEAD, 3-SECTION
3	EACH	SIGNAL BACKPLATE
1	EACH	TRAFFIC CONTROLLER AND CABINET (COMPLETE)

ECONOLITE ASC-8000
CONTROLLER ON-SITE

TRAFFIC SIGNAL EQUIPMENT
SHALL BE ECONOLITE TO
MATCH THE ADJACENT
EXISTING SYSTEM

TS# 22175
WILLOW SPRINGS

I.D.O.T. TRAFFIC SIGNAL INSTALLATION ELECTRICAL SERVICE REQUIREMENTS					TOTAL WATTAGE
TYPE	NO LAMPS	WATTAGE		%OPERATION	
		INCAND.	LED		
SIGNAL (RED)	9		17	0.5	76.5
(YELLOW)	9		25	0.25	56.25
(GREEN)	9		15	0.25	33.75
ARROW	-		12	0.10	30
PED. SIGNAL	4		25	1.00	100
CONTROLLER	1		100	1.00	100
ILLUM. SIGN			25	0.05	-
VIDEO SYSTEM			-	1.00	-
FLASHER			-	-	-
ENERGY COSTS TO:					TOTAL = 366.5
ILLINOIS DEPARTMENT OF TRANSPORTATION 201 WEST CENTER COURT SCHAUMBURG, ILLINOIS 60196-1096 ENERGY SUPPLY CONTACT: ILYAS MOHIUDDIN PHONE: (708) 235-2692 COMPANY: COMMONWEALTH EDISON					

FILE NAME =	USER NAME = .USER.	DESIGNED - M.A./V.O.	REVISED - I.Y. 6/2/2014
J:\13155\Work Order 2\DDN\CADD Sheets\Revision 1\160Y18-sht-ts-25.22175-rev1.dgn		DRAWN - Y.J./E.C.	REVISED -
		CHECKED - I.Y.	REVISED -
		DATE - 5/16/2014	REVISED -

STATE OF ILLINOIS
DEPARTMENT OF TRANSPORTATION

SCHEDULE OF QUANTITIES, CABLE PLAN, PHASE DESIGNATION DIAGRAM, AND EMERGENCY VEHICLE PREEMPTION SEQUENCE 47TH STREET AT CENTRAL AVENUE			
SCALE: NTS	SHEET NO. 1 OF 1 SHEETS	STA. N/A	TO STA. N/A

F.A.P. RTE.	SECTION	COUNTY	TOTAL SHEETS	SHEET NO.
	2014-03215	COOK	68	41
CONTRACT NO. 60Y18				
ILLINOIS FED. AID PROJECT				