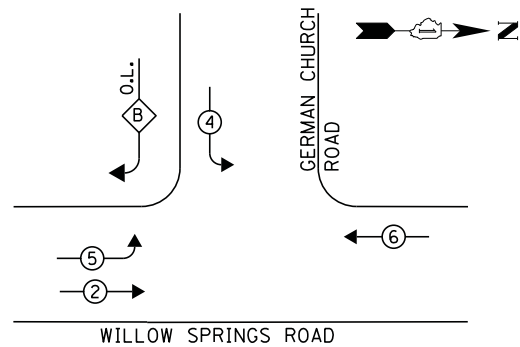
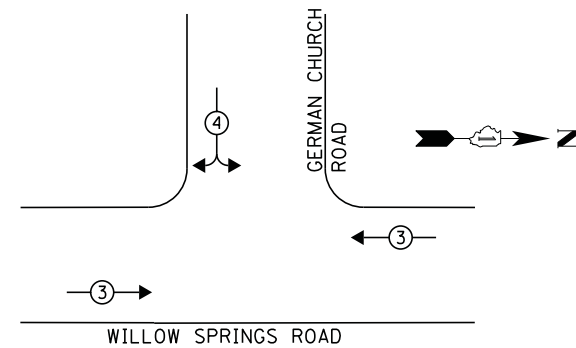


**CONTROLLER SEQUENCE**

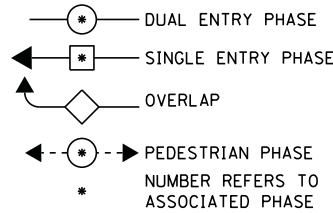


**PHASE DESIGNATION DIAGRAM**

**EMERGENCY VEHICLE PREEMPTION SEQUENCE**



**LEGEND**



**RIGHT TURN OVERLAP PHASE DESIGNATION**

OVERLAP LETTER	PERMISSIVE PHASE	PROTECTED PHASE
B	= 4	+ 5

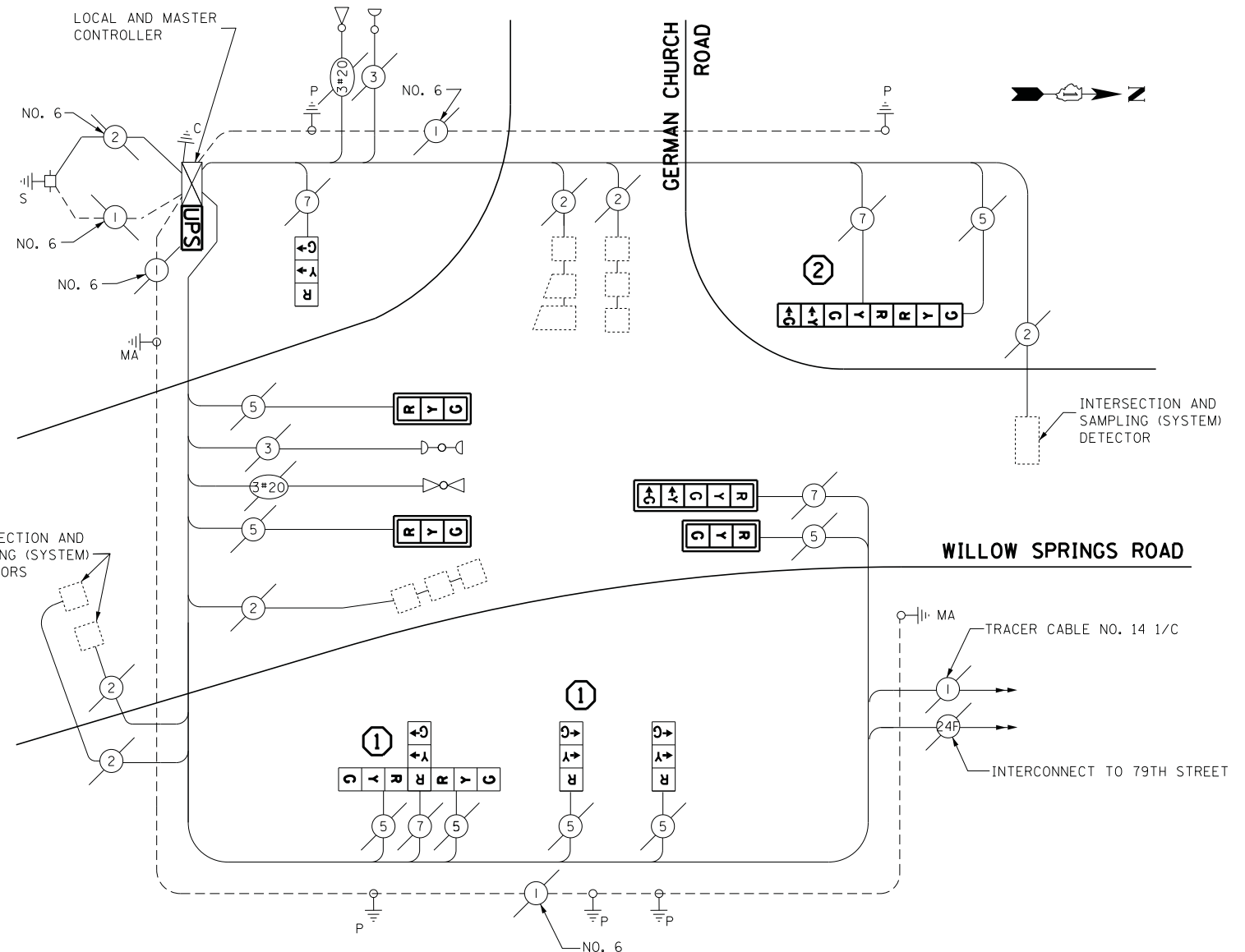
**FIRE PREEMPTION SEQUENCE OF OPERATION**

INTERVAL FROM NORMAL SEQUENCE OF OPERATION	1	4	6	EMERGENCY VEHICLE INTEREST		
FIRE PREEMPTION INTERVAL	1A	1B	1C	1D	1E	2
CHANGE TO	2	1C	2	1E	2	2
WILLOW SPRINGS RD. NORTHBOUND FAR LEFT AND SUPPLEMENTARY FAR LEFT SIGNALS	G	Y	R	R	R	G
WILLOW SPRINGS RD. NORTHBOUND FAR RIGHT SIGNAL	G	Y	R	R	R	G
WILLOW SPRINGS RD. SOUTHBOUND SIGNALS	R	Y	R	R	R	R
GERMAN CHURCH RD. EASTBOUND NEAR RIGHT AND FAR RIGHT SIGNALS	R	R	R	Y	R	R
GERMAN CHURCH RD. EASTBOUND FAR LEFT SIGNAL	R	R	R	Y	R	R
TIME-SECONDS-ADJUSTABLE	1-30	1-30	1-30	1-30	1-30	1-120

FIRE PREEMPTION SEQUENCE SHALL PROVIDE FOR THE PROPER CLEARANCE INTERVAL TO RESUME THE NORMAL SEQUENCE OF OPERATION (PHASE 2)

- ① REPLACE 14FT. PAINTED POST, RE-USE EXISTING FOUNDATION
- ② REPLACE 16FT. PAINTED POST, RE-USE EXISTING FOUNDATION

EMERGENCY VEHICLE PREEMPTOR		
EMERGENCY VEHICLE PREEMPTOR	3	4
MOVEMENT	↔	↔



**CABLE PLAN**

**SCHEDULE OF QUANTITIES**

QUANTITY	UNIT	ITEM
1	EACH	MAINTENANCE OF EXISTING TRAFFIC SIGNAL INSTALLATION
2	EACH	TRAFFIC SIGNAL POST, GALVANIZED STEEL 14 FT.
1	EACH	TRAFFIC SIGNAL POST, GALVANIZED STEEL 16 FT.
3	EACH	SIGNAL HEAD, LED, 1-FACE, 3-SECTION, BRACKET MOUNTED
3	EACH	SIGNAL HEAD, LED, 1-FACE, 3-SECTION, MAST-ARM MOUNTED
1	EACH	SIGNAL HEAD, LED, 1-FACE, 5-SECTION, MAST-ARM MOUNTED
1	EACH	SIGNAL HEAD, LED, 2-FACE, 1-3 SECTION, 1-5 SECTION, BRACKET MOUNTED
1	EACH	SIGNAL HEAD, LED, 3-FACE, 3-SECTION, BRACKET MOUNTED
4	EACH	TRAFFIC SIGNAL BACKPLATE, LOUVERED, ALUMINUM
4	EACH	RELOCATE EXISTING SIGNAL HEAD
1	EACH	MODIFY EXISTING CONTROLLER CABINET
1	EACH	REMOVE EXISTING TRAFFIC SIGNAL EQUIPMENT
2	EACH	REMOVE AND REPLACE ANCHOR BOLTS
1	EACH	UNINTERRUPTIBLE POWER SUPPLY, SPECIAL

**REMOVAL OF EXISTING TRAFFIC SIGNAL EQUIPMENT**

THE FOLLOWING ITEMS SHALL BE REMOVED BY THE CONTRACTOR AND SHALL BE DISPOSED OF BY THEM OUTSIDE THE RIGHT-OF-WAY AT THEIR EXPENSE. THE SALVAGE VALUE OF THE REMOVED EQUIPMENT SHALL BE REFLECTED IN THE CONTRACT BID PRICE.

- 4 EACH SIGNAL HEAD, 3-SECTION
- 2 EACH SIGNAL HEAD, 5-SECTION
- 3 EACH TRAFFIC SIGNAL POST
- 4 EACH TRAFFIC SIGNAL BACKPLATE

ECONOLITE  
ASC/2S-1000 & ASC/2M-1000  
CONTROLLERS ON-SITE

TRAFFIC SIGNAL EQUIPMENT  
SHALL BE ECONOLITE TO  
MATCH THE ADJACENT  
EXISTING SYSTEM

TS# 3573  
WILLOW SPRINGS

I.D.O.T. TRAFFIC SIGNAL INSTALLATION ELECTRICAL SERVICE REQUIREMENTS					TOTAL WATTAGE
TYPE	NO LAMPS	WATTAGE		%OPERATION	
		INCAND.	LED		
SIGNAL (RED)	12		17	0.5	102
(YELLOW)	12		25	0.25	75
(GREEN)	12		15	0.25	45
ARROW	4		12	0.10	4,8
PED. SIGNAL	-		25	1.00	-
CONTROLLER ILLUM. SIGN	1		100	1.00	100
VIDEO SYSTEM			25	0.05	-
FLASHER					-
ENERGY COSTS TO:				TOTAL =	326.8

ILLINOIS DEPARTMENT OF TRANSPORTATION  
201 WEST CENTER COURT  
SCHAUMBURG, ILLINOIS 60196-1096  
ENERGY SUPPLY CONTACT: ILYAS MOHIUDDIN  
PHONE: (708) 235-2692  
COMPANY: COMMONWEALTH EDISON

DESIGNED - M.A./V.O.	REVISED -
DRAWN - Y.J./E.C.	REVISED -
CHECKED - I.Y.	REVISED -
DATE - 5/16/2014	REVISED -

STATE OF ILLINOIS  
DEPARTMENT OF TRANSPORTATION

SCHEDULE OF QUANTITIES, CABLE PLAN, PHASE DESIGNATION DIAGRAM, AND EMERGENCY VEHICLE PREEMPTION SEQUENCE WILLOW SPRINGS ROAD AT GERMAN CHURCH ROAD			
SCALE: NTS	SHEET NO. 1 OF 1 SHEETS	STA. N/A	TO STA. N/A

F.A.P. RTE.	SECTION	COUNTY	TOTAL SHEETS	SHEET NO.
	2014-0321S	COOK	68	46
CONTRACT NO. 60Y18				
ILLINOIS FED. AID PROJECT				