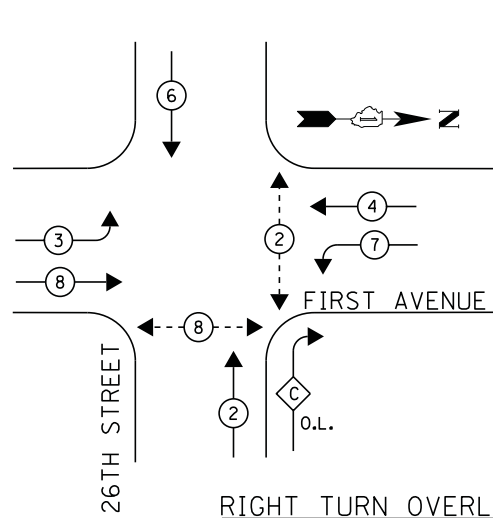


**CONTROLLER SEQUENCE**



**LEGEND**

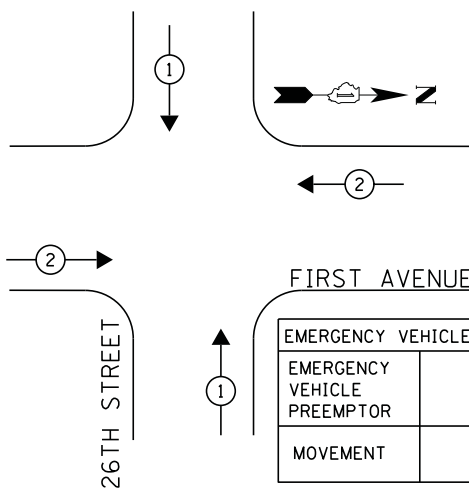
- ← (circle with dot) DUAL ENTRY PHASE
- ← (square) SINGLE ENTRY PHASE
- ◊ O.L. OVERLAP
- ← (circle with dot) PEDESTRIAN PHASE
- \* NUMBER REFERS TO ASSOCIATED PHASE

**RIGHT TURN OVERLAP PHASE DESIGNATION**

OVERLAP LETTER	PERMISSIVE PHASE	PROTECTED PHASE
C	= 2	+ 7

**PHASE DESIGNATION DIAGRAM**

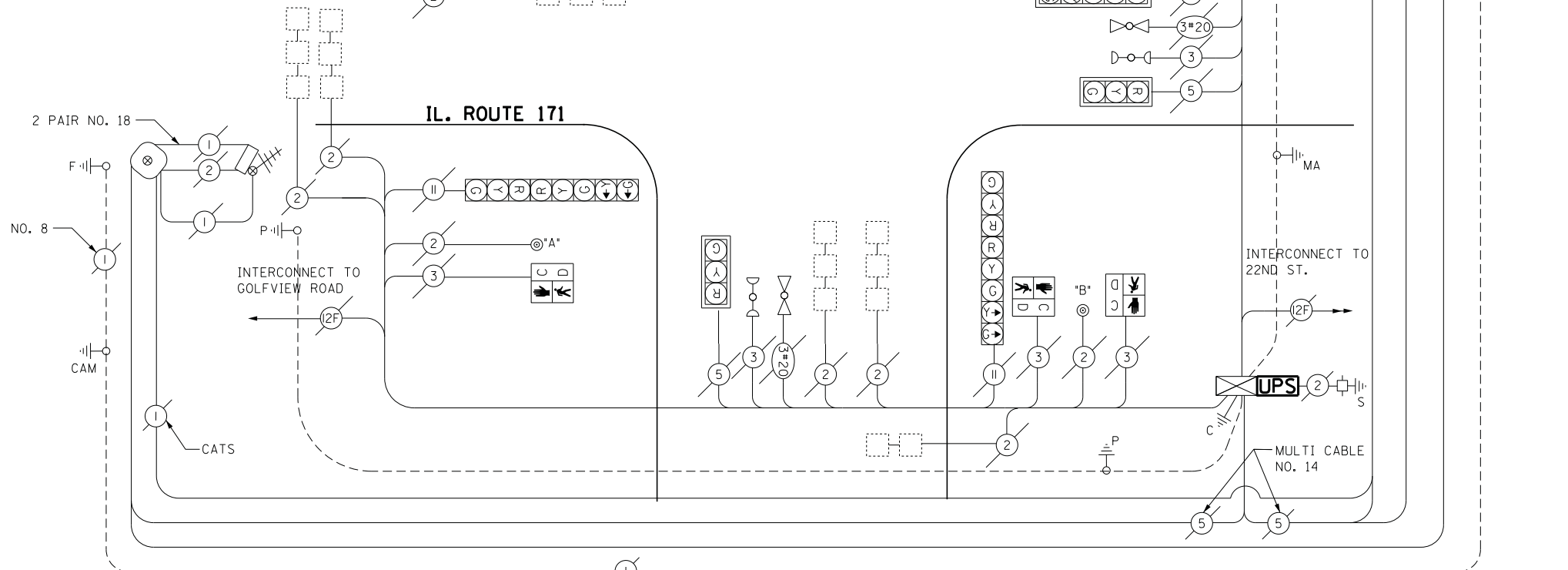
**EMERGENCY VEHICLE PREEMPTION SEQUENCE**



EMERGENCY VEHICLE PREEMPTOR		
EMERGENCY VEHICLE PREEMPTOR	1	2
MOVEMENT	↑↓	→←

I.D.O.T. TRAFFIC SIGNAL INSTALLATION ELECTRICAL SERVICE REQUIREMENTS					
TYPE	NO LAMPS	WATTAGE		%OPERATION	TOTAL WATTAGE
		INCAND.	LED		
SIGNAL (RED)	15		17	0.5	127.5
(YELLOW)	15		25	0.25	93.75
(GREEN)	15		15	0.25	56.25
ARROW	12		12	0.10	14.4
PED. SIGNAL	4		25	1.00	100
CONTROLLER	1		100	1.00	100
ILLUM. SIGN				0.05	-
VIDEO SYSTEM				1.00	-
FLASHER				-	-
ENERGY COSTS TO:					TOTAL = 491.9
ILLINOIS DEPARTMENT OF TRANSPORTATION 201 WEST CENTER COURT SCHAUMBURG, ILLINOIS 60196-1096 ENERGY SUPPLY CONTACT: JOE STACHO PHONE: (630) 424-5704 COMPANY: COMMONWEALTH EDISON					

- +++ FMS AP ANTENNA BOX (FMS) FLUSH MOUNTED
- o/# SENSOR (# INDICATES SENSOR NUME)
- ⊗ CAMERA ENCLOSURE
- ⊗ MINI CAMERA W/FLASH & P.M.C.
- ⊗ FLASH
- ⊗ REDFLEX SERVICE INSTALLATION WITH DISCONNECT
- ⊗ GROUND ROD AT CAMERA POLE
- ⊗ GROUND ROD AT FLASH POLE



**NOTE:**

- PUSH BUTTON "A" PLACES A CALL IN PHASE 8
- PUSH BUTTON "B" PLACES A CALL IN PHASE 8 & 2
- PUSH BUTTON "C" PLACES A CALL IN PHASE 2

**SCHEDULE OF QUANTITIES**

QUANTITY	UNIT	ITEM
1	EACH	MAINTENANCE OF EXISTING TRAFFIC SIGNAL INSTALLATION
1	EACH	MODIFY EXISTING CONTROLLER CABINET
1	EACH	UNINTERRUPTABLE POWER SUPPLY, SPECIAL

ECONOLITE ASC/2-2100  
CONTROLLER ON-SITE

TRAFFIC SIGNAL EQUIPMENT  
SHALL BE ECONOLITE TO  
MATCH THE ADJACENT  
EXISTING SYSTEM

RED LIGHT PHOTO ENFORCED  
INTERSECTION VENDOR:  
REDFLEX TRAFFIC SYSTEMS

TS# 3585  
NORTH RIVERSIDE