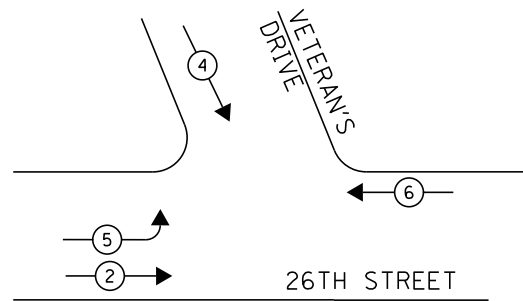
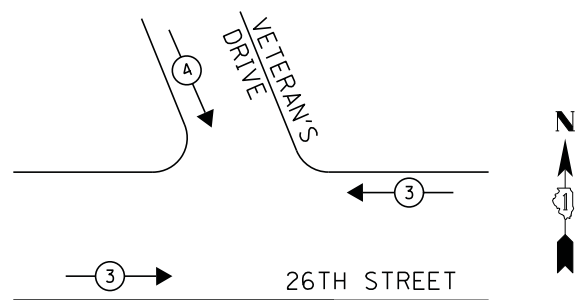


**CONTROLLER SEQUENCE**

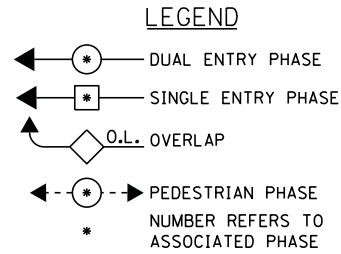


**PHASE DESIGNATION DIAGRAM**

**EMERGENCY VEHICLE PREEMPTION SEQUENCE**



EMERGENCY VEHICLE PREEMPTOR		
EMERGENCY VEHICLE PREEMPTOR	3	4
MOVEMENT	↔	↓



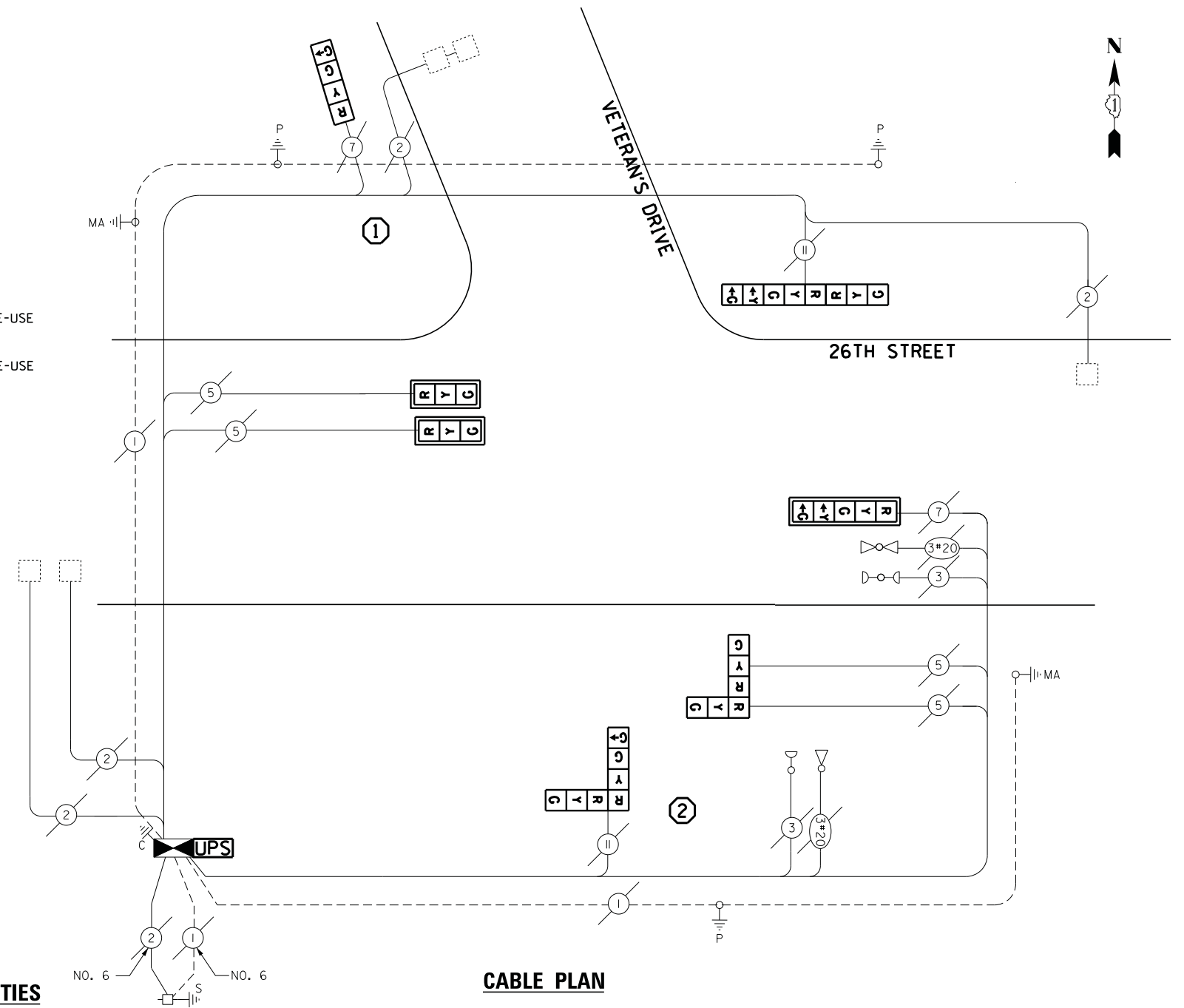
- ① REPLACE 15FT, PAINTED POST, RE-USE EXISTING FOUNDATION
- ② REPLACE 18FT, PAINTED POST, RE-USE EXISTING FOUNDATION

- NOTES:**
- RELOCATION OF EMERGENCY VEHICLE PREEMPTION SYSTEM, DETECTOR UNIT, IS INCLUDED IN COST OF REPLACING SIGNAL POSTS.
  - RELOCATION OF EMERGENCY VEHICLE PREEMPTION SYSTEM, PHASING UNIT, IS INCLUDED IN COST OF CONTROLLER CABINET.

**SCHEDULE OF QUANTITIES**

QUANTITY	UNIT	ITEM
1	EACH	MAINTENANCE OF EXISTING TRAFFIC SIGNAL INSTALLATION
1	EACH	FULL-ACTUATED CONTROLLER AND TYPE IV CABINET
1	EACH	TRAFFIC SIGNAL POST, GALVANIZED STEEL 15 FT.
1	EACH	TRAFFIC SIGNAL POST, GALVANIZED STEEL 18 FT.
1	EACH	SIGNAL HEAD, LED, 1-FACE, 4-SECTION, BRACKET MOUNTED
1	EACH	SIGNAL HEAD, LED, 2-FACE, 3-SECTION, BRACKET MOUNTED
1	EACH	SIGNAL HEAD, LED, 2-FACE, 1-3 SECTION, 1-4 SECTION, BRACKET MOUNTED
1	EACH	SIGNAL HEAD, LED, 2-FACE, 1-3 SECTION, 1-5 SECTION, BRACKET MOUNTED
3	EACH	TRAFFIC SIGNAL BACKPLATE, LOUVERED, ALUMINUM
4	EACH	INDUCTIVE LOOP DETECTOR
1	EACH	REMOVE EXISTING TRAFFIC SIGNAL EQUIPMENT
1	EACH	REMOVE AND REPLACE ANCHOR BOLTS
1	EACH	UNINTERRUPTABLE POWER SUPPLY, SPECIAL

**CABLE PLAN**



**REMOVAL OF EXISTING TRAFFIC SIGNAL EQUIPMENT**

THE FOLLOWING ITEMS SHALL BE REMOVED BY THE CONTRACTOR AND SHALL BE DISPOSED OF BY THEM OUTSIDE THE RIGHT-OF-WAY AT THEIR EXPENSE. THE SALVAGE VALUE OF THE REMOVED EQUIPMENT SHALL BE REFLECTED IN THE CONTRACT BID PRICE.

- 2 EACH SIGNAL HEAD, 5-SECTION
- 2 EACH TRAFFIC SIGNAL POST
- 3 EACH TRAFFIC SIGNAL BACKPLATE
- 6 EACH SIGNAL HEAD, 3-SECTION
- 2 EACH SIGNAL HEAD, 4-SECTION
- 1 EACH CONTROLLER AND CABINET (COMPLETE)

TRAFFIC SIGNAL EQUIPMENT SHALL BE ECONOLITE TO MATCH THE ADJACENT EXISTING SYSTEM

TS# 3750  
NORTH RIVERSIDE

I.D.O.T. TRAFFIC SIGNAL INSTALLATION ELECTRICAL SERVICE REQUIREMENTS				TOTAL WATTAGE
TYPE	NO LAMPS	WATTAGE	%OPERATION	
		INCAND.	LED	
SIGNAL (RED)	10	17	0.5	85
(YELLOW)	10	25	0.25	62.5
(GREEN)	10	15	0.25	37.5
ARROW	6	12	0.10	7.2
PED. SIGNAL	-	25	1.00	-
CONTROLLER	1	100	1.00	100
ILLUM. SIGN	-	25	0.05	-
VIDEO SYSTEM	-	-	1.00	-
FLASHER	-	-	-	-
ENERGY COSTS TO:				TOTAL = 292.2
ILLINOIS DEPARTMENT OF TRANSPORTATION 201 WEST CENTER COURT SCHAUMBURG, ILLINOIS 60196-1096 ENERGY SUPPLY CONTACT: JOE STACHO PHONE: (630) 424-5704 COMPANY: COMMONWEALTH EDISON				

FILE NAME = J:\13155\Work Order 2\DDN\CADD Sheets\060Y18-sht-ts-41.3750.dgn	USER NAME = .USER.	DESIGNED - M.A./V.O.	REVISED -
PLOT SCALE = 20.0000' / in.		DRAWN - Y.J./E.C.	REVISED -
PLOT DATE = 5/14/2014		CHECKED - I.Y.	REVISED -
		DATE - 5/16/2014	REVISED -

STATE OF ILLINOIS  
DEPARTMENT OF TRANSPORTATION

SCHEDULE OF QUANTITIES, CABLE PLAN, PHASE DESIGNATION DIAGRAM, AND EMERGENCY VEHICLE PREEMPTION SEQUENCE 26TH AVENUE AT VETERAN'S DRIVE			
SCALE: NTS	SHEET NO. 1 OF 1 SHEETS	STA. N/A	TO STA. N/A

F.A.P. RTE.	SECTION	COUNTY	TOTAL SHEETS	SHEET NO.
	2014-032TS	COOK	68	57
CONTRACT NO. 60Y18				
ILLINOIS FED. AID PROJECT				