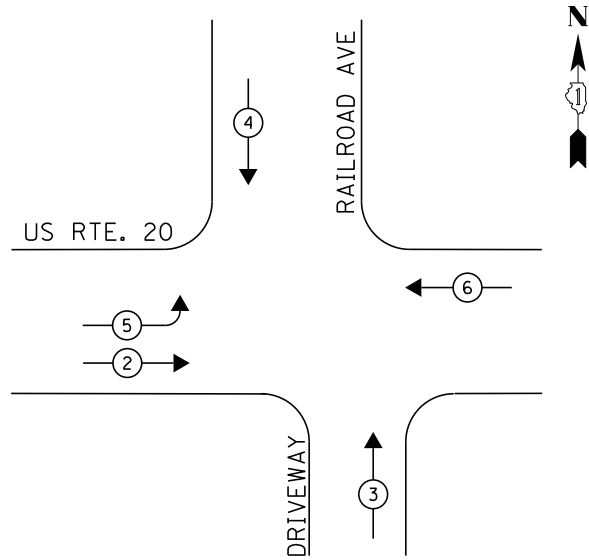
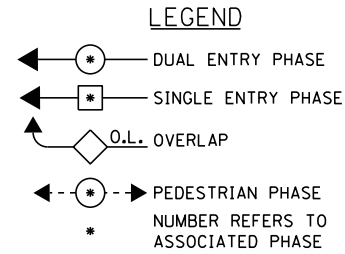
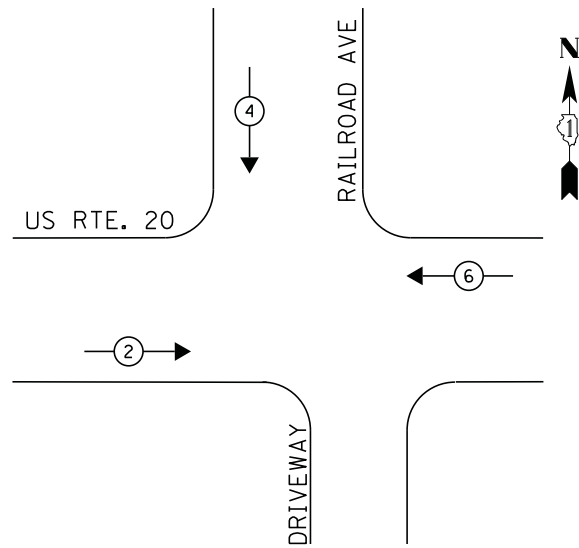


CONTROLLER SEQUENCE



PHASE DESIGNATION DIAGRAM

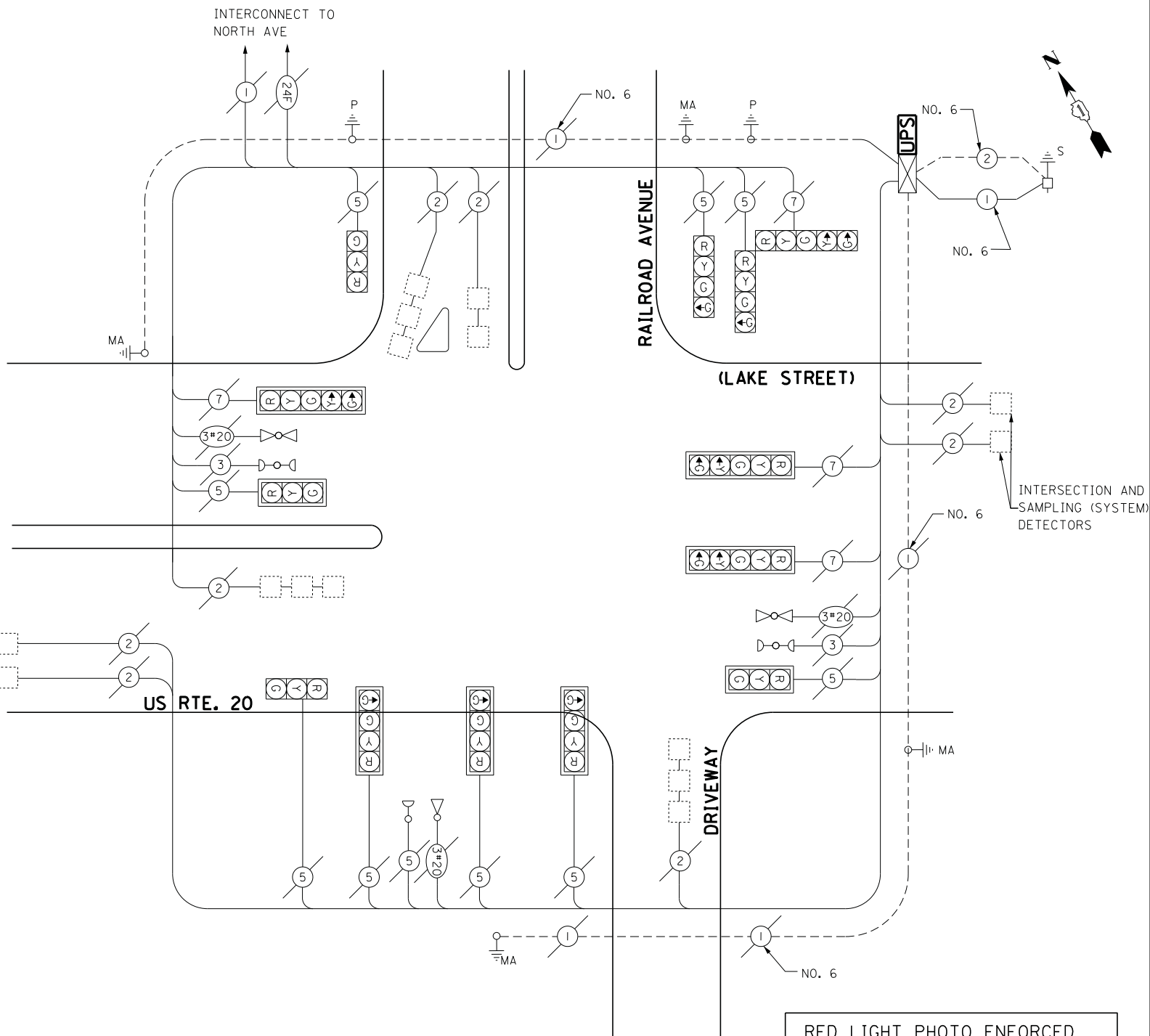
EMERGENCY VEHICLE PREEMPTION SEQUENCE



EMERGENCY VEHICLE PREEMPTOR		
EMERGENCY VEHICLE PREEMPTOR	3	4
MOVEMENT	↔	↓

SCHEDULE OF QUANTITIES

QUANTITY	UNIT	ITEM
1	EACH	MAINTENANCE OF EXISTING TRAFFIC SIGNAL INSTALLATION
1	EACH	MODIFY EXISTING CONTROLLER CABINET
1	EACH	UNINTERRUPTABLE POWER SUPPLY, SPECIAL



CABLE PLAN

RED LIGHT PHOTO ENFORCED
INTERSECTION VENDOR:
REDFLEX TRAFFIC SYSTEMS

ECONOLITE ASC/2S-2100
CONTROLLER ON-SITE

TRAFFIC SIGNAL EQUIPMENT
SHALL BE ECONOLITE TO
MATCH THE ADJACENT
EXISTING SYSTEM

TS# 3067
NORTHLAKE

I.D.O.T. TRAFFIC SIGNAL INSTALLATION ELECTRICAL SERVICE REQUIREMENTS					TOTAL WATTAGE
TYPE	NO LAMPS	WATTAGE		%OPERATION	
		INCAND.	LED		
SIGNAL (RED)	13		17	0.5	110.5
(YELLOW)	13		25	0.25	81.3
(GREEN)	13		15	0.25	48.8
ARROW	13		12	0.10	15.6
PED. SIGNAL	-		25	1.00	-
CONTROLLER	1		100	1.00	100
ILLUM. SIGN			25	0.05	-
VIDEO SYSTEM			-	1.00	-
FLASHER			-	-	-
ENERGY COSTS TO:					TOTAL = 356.2

ILLINOIS DEPARTMENT OF TRANSPORTATION
201 WEST CENTER COURT
SCHAUMBURG, ILLINOIS 60196-1096
ENERGY SUPPLY CONTACT: JOE STACHO
PHONE: (630) 424-5704
COMPANY: COMMONWEALTH EDISON

FILE NAME =	USER NAME = .USER.	DESIGNED - M.A./V.O.	REVISED -
J:\13155\Work Order 2\DCN\CADD Sheets\060Y18-sht-ts-48_3067.dgn		DRAWN - Y.J./E.C.	REVISED -
	PLOT SCALE = 20.0000' / in.	CHECKED - I.Y.	REVISED -
	PLOT DATE = 5/14/2014	DATE - 5/16/2014	REVISED -

STATE OF ILLINOIS
DEPARTMENT OF TRANSPORTATION

SCHEDULE OF QUANTITIES, CABLE PLAN, PHASE DESIGNATION DIAGRAM, AND EMERGENCY VEHICLE PREEMPTION SEQUENCE IL. RTE 20 (LAKE STREET) AT RAILROAD AVENUE			
SCALE: NTS	SHEET NO. 1	OF 1 SHEETS	STA. N/A TO STA. N/A

F.A.P. RTE.	SECTION	COUNTY	TOTAL SHEETS	SHEET NO.
	2014-032TS	COOK	68	64
CONTRACT NO. 60Y18				
ILLINOIS FED. AID PROJECT				