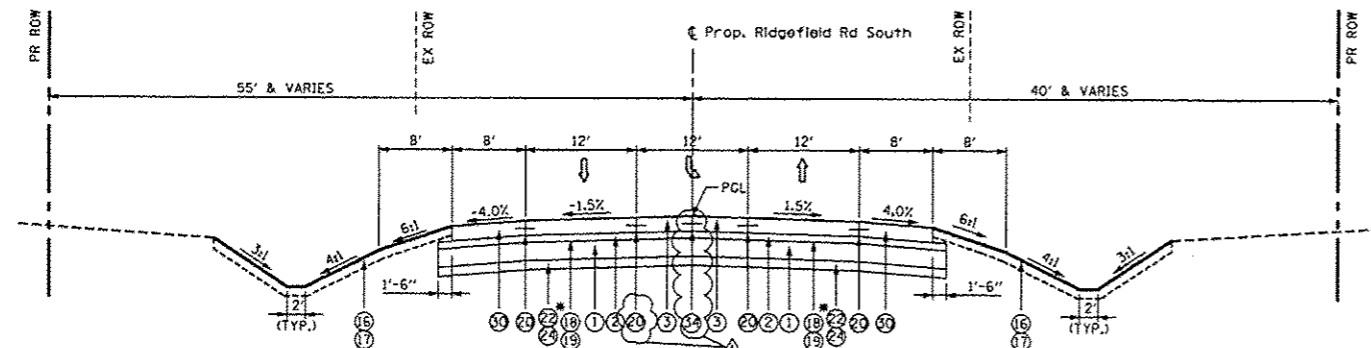
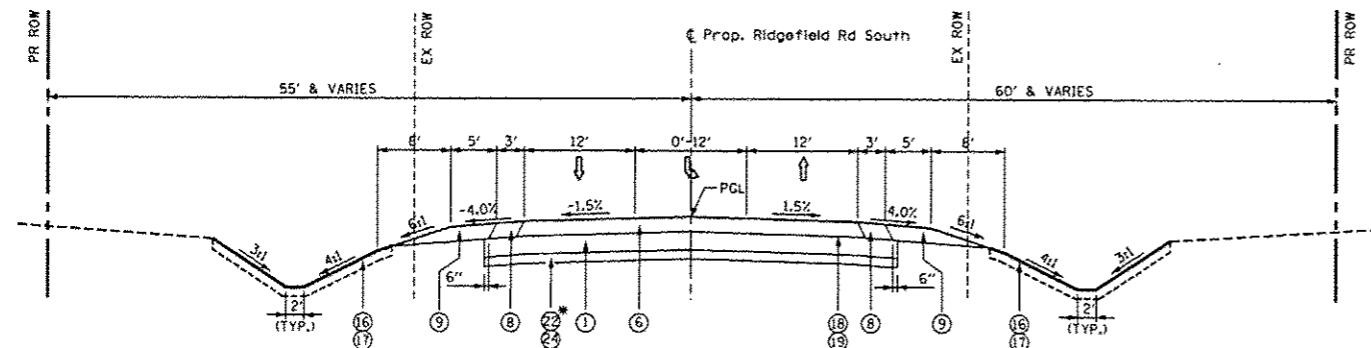


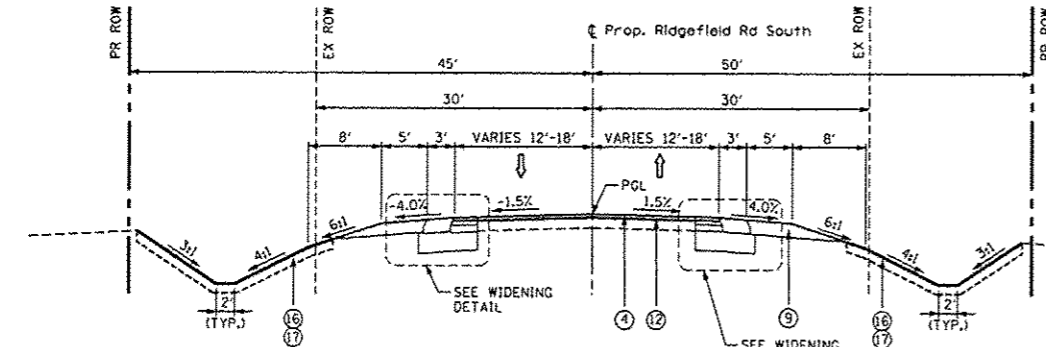
**TYPICAL EXISTING CROSS SECTION
RIDGEFIELD ROAD SOUTH
STA. 900+00 TO STA. 907+07.80**



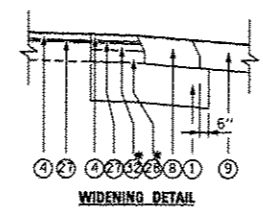
**TYPICAL PROPOSED CROSS SECTION
RIDGEFIELD ROAD SOUTH
STA. 900+00 TO STA. 901+77.55
* SEE PGES LIMITS ON SHEET 18**



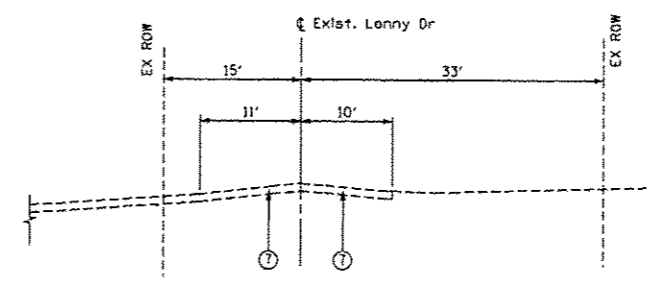
**TYPICAL PROPOSED CROSS SECTION
RIDGEFIELD ROAD SOUTH
STA. 901+77.55 TO STA. 904+25.00
* SEE PGES LIMITS ON SHEET 18**



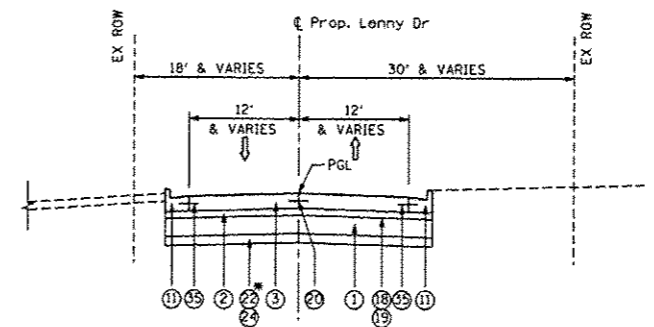
**TYPICAL PROPOSED CROSS SECTION
RIDGEFIELD ROAD SOUTH
STA. 904+25 TO STA. 907+07.80**



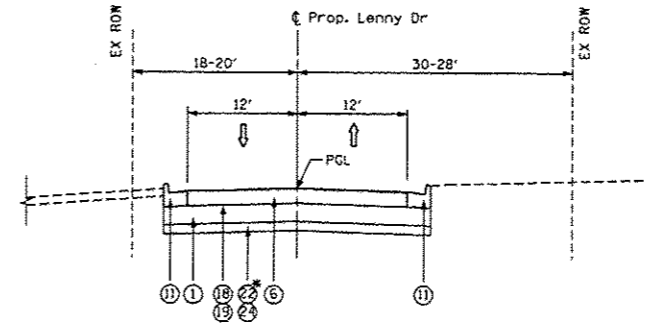
**WIDENING DETAIL
* SEE NOTE 8 ON SHEET 16.**



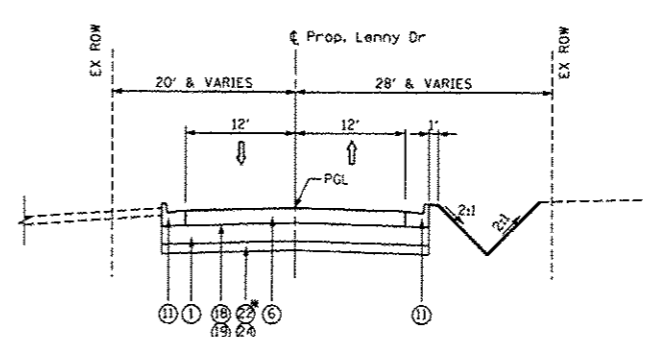
**TYPICAL EXISTING CROSS SECTION
LENNY DRIVE
STA. 0+00 TO STA. 4+18.12**



**TYPICAL PROPOSED CROSS SECTION
LENNY DRIVE
STA. 0+00 TO STA. 1+27.35
* SEE PGES LIMITS ON SHEET 18**



**TYPICAL PROPOSED CROSS SECTION
LENNY DRIVE
STA. 1+27.35 TO STA. 2+45.27
* SEE PGES LIMITS ON SHEET 18**



**TYPICAL PROPOSED CROSS SECTION
LENNY DRIVE
STA. 2+45.27 TO STA. 4+18.12
* SEE PGES LIMITS ON SHEET 18**

EXISTING LEGEND

- 1 EXISTING HMA PAVEMENT, 9"
- 2 EXISTING PORTLAND CEMENT CONCRETE, 4.75" - 6.75"
- 3 EXISTING AGGREGATE SHOULDER
- 4 EXISTING COMBINATION CURB AND GUTTER, TYPE B-6.12
- 5 EXISTING COMBINATION CURB AND GUTTER, TYPE B-6.24
- 6 EXISTING PORTLAND CEMENT CONCRETE SIDEWALK
- 7 EXISTING HMA PAVEMENT 5"

PROPOSED LEGEND

- 1 AGGREGATE SUBGRADE IMPROVEMENT 12"
- 2 STABILIZED SUBBASE - HOT-MIX ASPHALT, 4 1/2"
- 3 PORTLAND CEMENT CONCRETE PAVEMENT 9 3/4" (JOINTED)
- 4 HOT-MIX ASPHALT SURFACE COURSE, MIX "D", N70, 1 1/2"
- 5 POLYMERIZED HOT-MIX ASPHALT SURFACE COURSE, MIX "F", N90, 1 3/4"
- 6 HOT-MIX ASPHALT PAVEMENT (FULL-DEPTH), 9"
- 7 HOT-MIX ASPHALT SURFACE REMOVAL, 2 1/2"
- 8 HOT-MIX ASPHALT SHOULDERS, 9"
- 9 AGGREGATE SHOULDERS, TYPE B 9"
- 10 COMBINATION CONCRETE CURB AND GUTTER, TYPE B-6.12
- 11 COMBINATION CONCRETE CURB AND GUTTER, TYPE B-6.24
- 12 HOT-MIX ASPHALT SURFACE REMOVAL, 2 1/4"
- 13 CONCRETE MEDIAN SURFACE, 4 INCH
- 14 M.C.C.D. BIKETRAIL (SEE NOTE 3 ON SHEET 16)
- 15 PORTLAND CEMENT CONCRETE SIDEWALK 5 INCH
- 16 PROPOSED TOPSOIL, 6" (SEE NOTE 6 ON SHEET 16)
- 17 SEEDING, CLASS 2A
- 18 BITUMINOUS MATERIALS (PRIME COAT)
- 19 AGGREGATE (PRIME COAT)
- 20 LONGITUDINAL CONSTRUCTION JOINT, WITH NO. 6 EPOXY COATED TIE BARS 30" LONG AT 24" CTS
- 21 TOPSOIL FURNISH AND PLACE, 24"
- 22 POROUS GRANULAR EMBANKMENT
- 23 COURSE AGGREGATE FILL
- 24 REMOVAL AND DISPOSAL OF UNSUITABLE MATERIAL
- 25 ADDITIONAL 1 FOOT PAVEMENT RECONSTRUCTION
- 26 SODDING, SALT TOLERANT
- 27 POLYMERIZED LEVELING BINDER (MACHINE METHOD), IL-4.75, N50 3/4"
- 28 HOT-MIX ASPHALT BASE COURSE WIDENING, 4 1/2"
- 29 HOT-MIX ASPHALT BASE COURSE WIDENING, 9 3/4"
- 30 PORTLAND CEMENT CONCRETE SHOULDERS 9 3/4"
- 31 HOT-MIX ASPHALT BINDER COURSE, IL-19.0, N90 (2 1/4")
- 32 HOT-MIX ASPHALT BINDER COURSE, IL-19.0, N70 2 1/4"
- 33 CONCRETE MEDIAN, TYPE SB (SPECIAL)
- 34 LONGITUDINAL SAWED JOINT, WITH NO. 6 EPOXY COATED TIE BARS 30" LONG AT 30" CTS
- 35 NO. 6 EPOXY COATED TIE BARS 24" LONG @ 24" CTS

FILE NAME = S:\1606\CADD Sheets\VD162517-ht-typical	USER NAME = JUSERNAME	DESIGNED - JPW	REVISED - 7/14/2014 HWL
Addendum - V8Ldgn	DRAWN - JPW	CHECKED - MGZ	REVISED -
PLOT SCALE = 20,000 / 1"	DATE - 10/15/2013		
PLOT DATE = 7/14/2014			

**STATE OF ILLINOIS
DEPARTMENT OF TRANSPORTATION**

TYPICAL SECTIONS		F.A. R.T.E.	SECTION	COUNTY	TOTAL SHEETS	SHEET NO.
RIDGEFIELD ROAD SOUTH & LENNY DRIVE		305	27R-3	MCHENRY	431	15
SCALE:	SHEET NO. 15 OF 431 SHEETS	STA.	TO STA.	ILLINOIS FED. AID PROJECT CONTRACT NO. 62517		