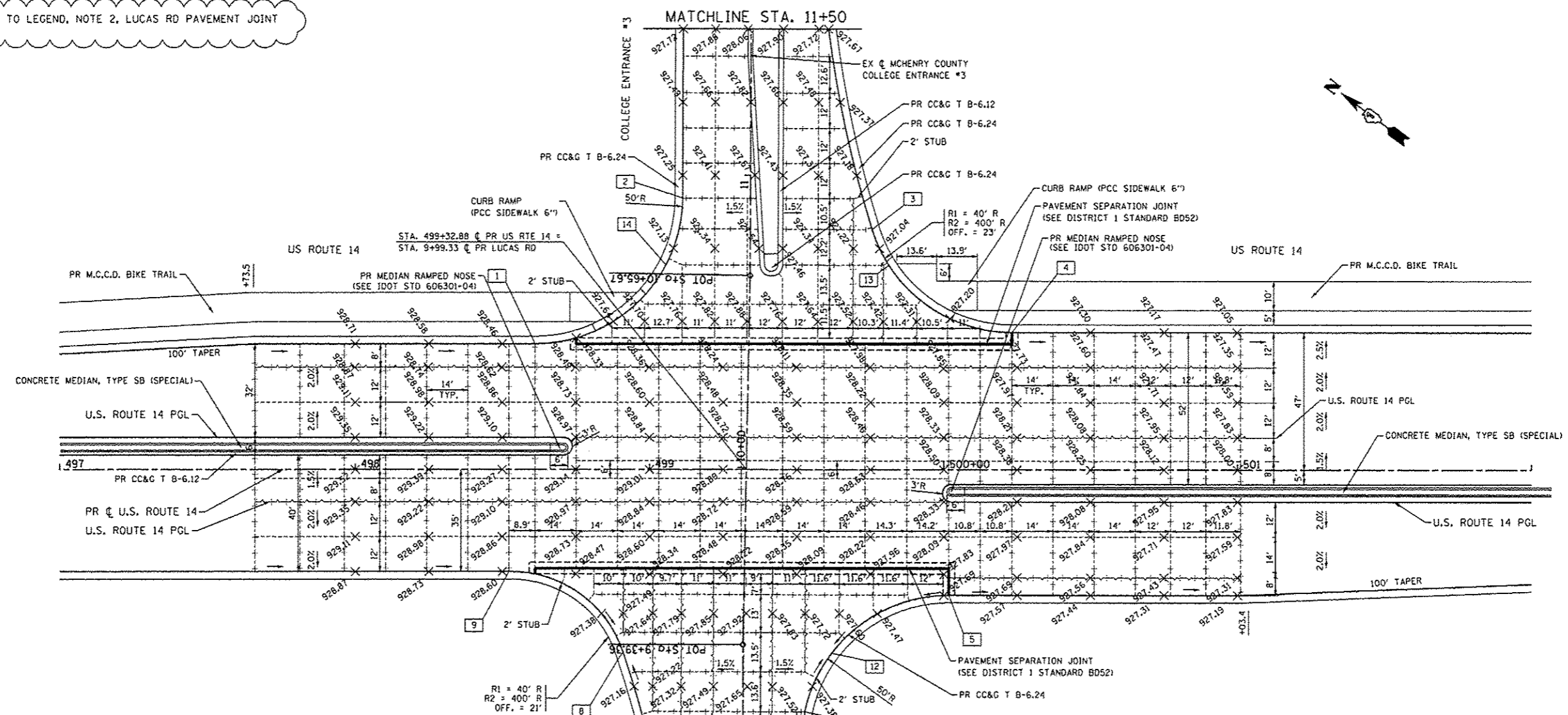


REVISIONS TO LEGEND, NOTE 2, LUCAS RD PAVEMENT JOINT TYPES.



EDGE OF PAVEMENT ELEVATIONS

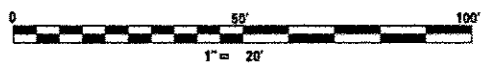
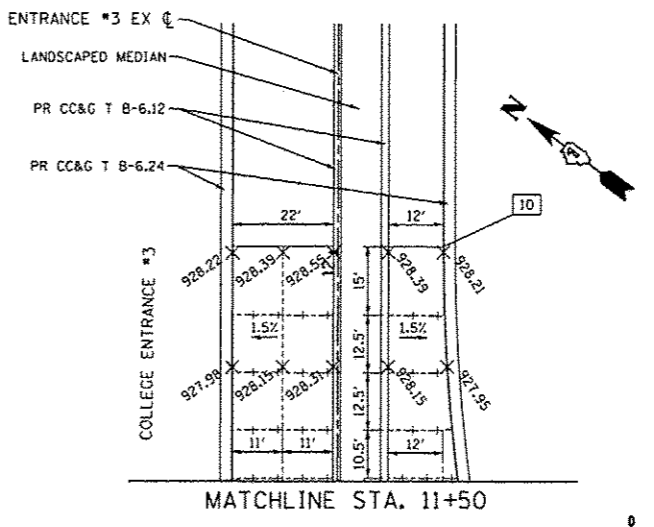
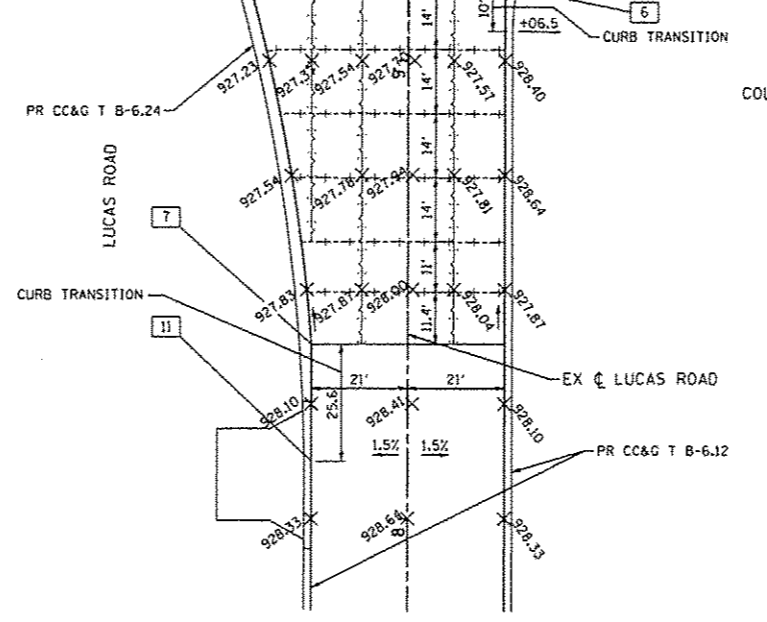
ALIGNMENT	STATION	OFFSET TO EOP (FT)	EOP ELEV	REMARK
1	LUCAS RD	498+66.12	43.00 LT	928.37 PT
2	LUCAS RD	499+16.12	92.91 LT	927.16 PC
3	LUCAS RD	499+72.72	74.39 LT	927.00 PCC
4	ROUTE 14	500+10.68	47 LT	927.50 PC
5	ROUTE 14	500+01.38	43 RT	927.69 PT
6	LUCAS RD	9+36.46	21 RT	927.70 PC
7	LUCAS RD	8+38.08	21 LT	927.97 PT
8	LUCAS RD	9+36.36	40.74 LT	926.90 PCC/LOW
9	ROUTE 14	498+52.31	35 RT	928.59 PC
10	LUCAS RD	12+01.30	23 RT	928.27 PT
11	LUCAS RD	8+12.51	21 LT	928.21 PC
12	LUCAS RD	9+36.55	30.03 RT	927.27 LOW
13	COL. ENTR #3	10+10.12	47.08 RT	927.00 LOW
14	COL. ENTR #3	10+68.80	28.60 LT	927.10 LOW

LEGEND

- LONGITUDINAL SAWED JOINT
- +---+--- TRANSVERSE CONTRACTION JOINT
- ~~~~~ LONGITUDINAL CONSTRUCTION JOINT

NOTES:

1. ADDITIONAL JOINTS MAY BE REQUIRED IN THE FIELD, AS DIRECTED BY THE ENGINEER. EXACT LOCATIONS TO BE VERIFIED IN THE FIELD, AND APPROVED BY THE ENGINEER.
2. SEE HIGHWAY STD 420101-04, 420106-04, 420111-03, 483001-04 AND DISTRICT 1 DETAIL B052 FOR ADDITIONAL PAVEMENT JOINT DETAILS.
3. LONGITUDINAL CONSTRUCTION JOINTS WITH TIE BARS SHALL BE PLACED BETWEEN PCC PAVEMENT AND PCC SHOULDERS. NOT SHOWN FOR CLARITY.
4. FOR DETAIL ON CURB RAMP, SEE IDOT STD 424006-01.
5. FOR DETAIL ON MEDIAN RAMPED NOSE, SEE IDOT STD 606301-04.



FILE NAME = S:\1086\VCADD Sheets\10162017-shr-intersec	USER NAME = JUSERNAME	DESIGNED - JPW	REVISED - 7/14/2014 HNL
	Addendum.dgn	DRAWN - JPW	REVISED -
	PLOT SCALE = 40.0000' / IN.	CHECKED - MG2	REVISED -
	PLOT DATE = 7/14/2014	DATE - 10/15/2013	REVISED -

STATE OF ILLINOIS  
DEPARTMENT OF TRANSPORTATION

INTERSECTION JOINTING DETAILS  
LUCAS ROAD /COLLEGE ENTRANCE #3 & U.S. ROUTE 14  
SCALE: 1"=20' SHEET NO. 210 OF 431 SHEETS STA. TO STA.

F.A.P. RTE. 305	SECTION 27R-3	COUNTY MCHENRY	TOTAL SHEETS 431	SHEET NO. 210
				CONTRACT NO. 62517
ILLINOIS FED. AID PROJECT				