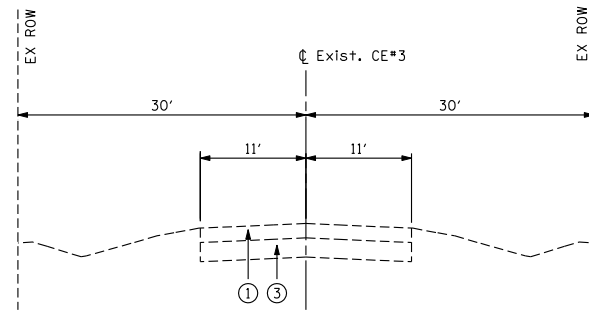
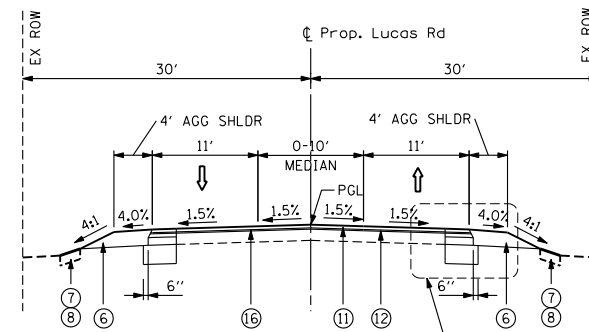


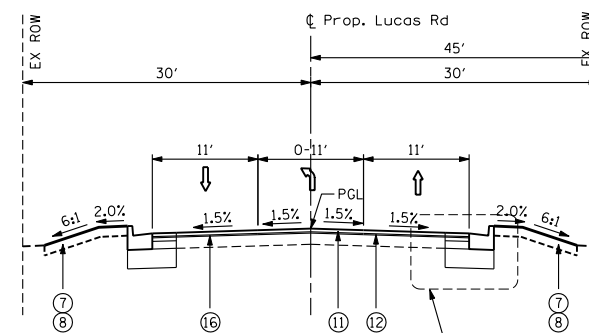
**TYPICAL EXISTING CROSS SECTION
LUCAS ROAD**
STA. 4+00.49 TO STA. 9+07.00



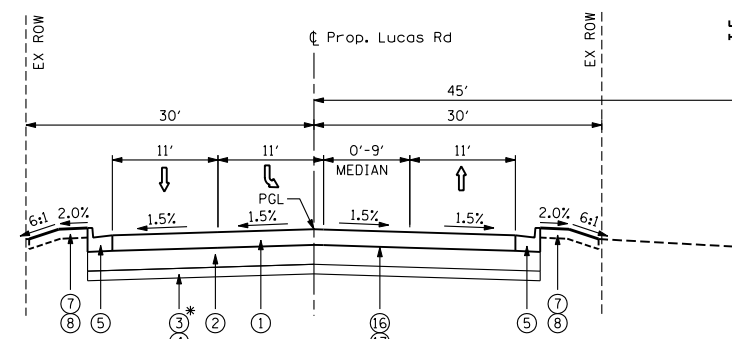
**TYPICAL EXISTING CROSS SECTION
COLLEGE ENTRANCE #3 (TARTON DR)**
STA. 10+92.20 TO STA. 13+70.73



**TYPICAL PROPOSED CROSS SECTION
LUCAS ROAD**
STA. 3+27.60 TO STA. 6+00.00

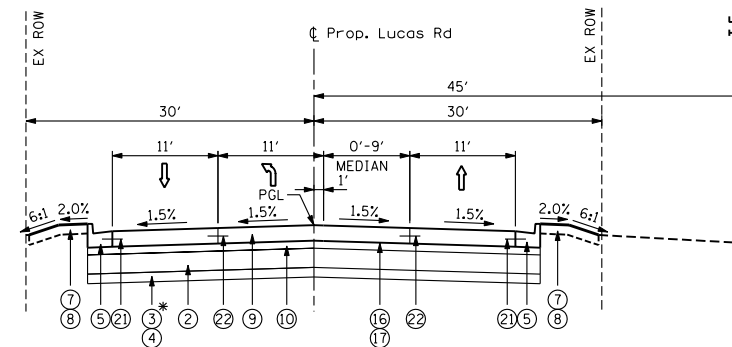


**TYPICAL PROPOSED CROSS SECTION
LUCAS ROAD**
STA. 6+00.00 TO STA. 6+50.00



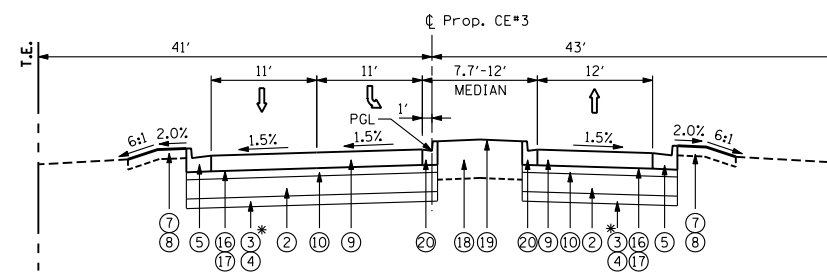
**TYPICAL PROPOSED CROSS SECTION
LUCAS ROAD**
STA. 6+50.00 TO STA. 8+38.10

* PGE WITHIN US RTE 14 MAINLINE PAVEMENT



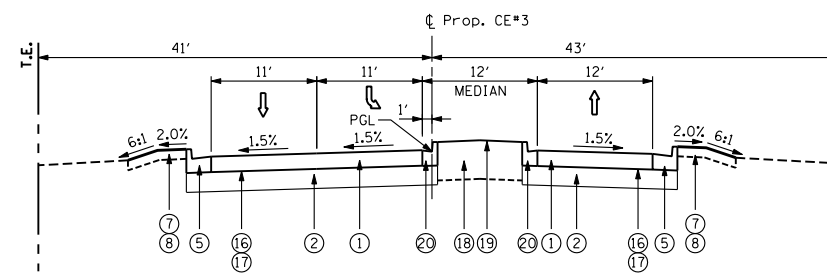
**TYPICAL PROPOSED CROSS SECTION
LUCAS ROAD / COLLEGE ENTRANCE #3 (TARTON DR)**
STA. 8+38.10 TO STA. 10+67.00

* PGE WITHIN US RTE 14 MAINLINE PAVEMENT

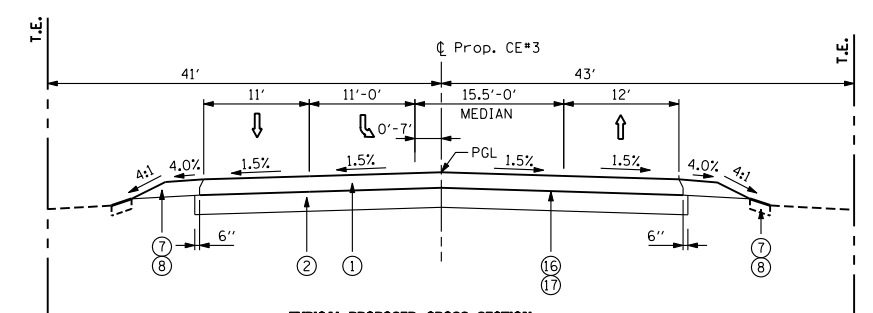


**TYPICAL PROPOSED CROSS SECTION
COLLEGE ENTRANCE #3 (TARTON DR)**
STA. 10+67.00 TO STA. 12+01.30

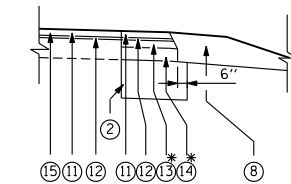
* PGE WITHIN US RTE 14 MAINLINE PAVEMENT



**TYPICAL PROPOSED CROSS SECTION
COLLEGE ENTRANCE #3 (TARTON DR)**
STA. 12+01.30 TO STA. 13+01.00

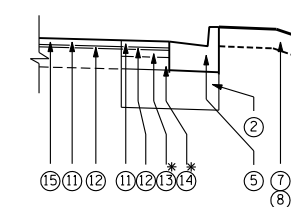


**TYPICAL PROPOSED CROSS SECTION
COLLEGE ENTRANCE #3 (TARTON DR)**
STA. 13+01.00 TO STA. 15+76.30



WIDENING DETAIL A

* SEE NOTE 8 ON SHEET 16



WIDENING DETAIL B

* SEE NOTE 8 ON SHEET 16

EXISTING LEGEND

- ① EXISTING HMA PAVEMENT, (COLLEGE ENTRANCE #3 - 5", LUCAS RD - 9")
- ② EXISTING AGGREGATE SHOULDER, 6"
- ③ EXISTING AGGREGATE SUBGRADE, 12"

PROPOSED LEGEND

- ① HOT-MIX ASPHALT PAVEMENT (FULL-DEPTH), 9"
- ② AGGREGATE SUBGRADE IMPROVEMENT 12"
- ③ POROUS GRANULAR EMBANKMENT
- ④ REMOVAL AND DISPOSAL OF UNSUITABLE MATERIAL
- ⑤ COMBINATION CONCRETE CURB AND GUTTER, TYPE B-6.24
- ⑥ AGGREGATE SHOULDERS, TYPE B 9"
- ⑦ PROPOSED TOPSOIL, 6" (SEE NOTE 6 ON SHEET 16)
- ⑧ SEEDING, CLASS 2A
- ⑨ PORTLAND CEMENT CONCRETE PAVEMENT 9 3/4" (JOINTED)
- ⑩ STABILIZED SUBBASE - HOT-MIX ASPHALT, 4 1/2"
- ⑪ HOT-MIX ASPHALT SURFACE COURSE, MIX "D", N70, 1 1/2"
- ⑫ POLYMERIZED LEVELING BINDER (MACHINE METHOD), IL-4.75, N50 - 3/4"
- ⑬ HOT-MIX ASPHALT BINDER COURSE, IL-19.0, N70 2 1/4"
- ⑭ HOT-MIX ASPHALT BASE COURSE WIDENING, 4 1/2"
- ⑮ HOT-MIX ASPHALT SURFACE REMOVAL, 2 1/4"
- ⑯ BITUMINOUS MATERIALS (PRIME COAT)
- ⑰ AGGREGATE (PRIME COAT)
- ⑱ TOPSOIL FURNISH AND PLACE, 24"
- ⑲ SEEDING, CLASS 2A
- ⑳ COMBINATION CONCRETE CURB AND GUTTER, TYPE B-6.12
- ㉑ NO. 6 EPOXY COATED TIE BARS 24" LONG @ 24" CTS
- ㉒ LONGITUDINAL CONSTRUCTION JOINT, WITH NO. 6 EPOXY COATED TIE BARS 30" LONG AT 24" CENTERS

FILE NAME =	USER NAME = .USERNAME.	DESIGNED - JPW	REVISED -
S:\1606\CADD Sheets\0162517-sht-typical.dgn		DRAWN - JPW	REVISED -
	PLOT SCALE = 20.000' / IN.	CHECKED - MGZ	REVISED -
	PLOT DATE = 10/14/2013	DATE - 10/15/2013	REVISED -

**STATE OF ILLINOIS
DEPARTMENT OF TRANSPORTATION**

**TYPICAL SECTIONS
LUCAS RD & COLLEGE ENTRANCE #3 (TARTON DR)**

SCALE: SHEET NO. 14 OF 431 SHEETS STA. TO STA.

F.A. RTE.	SECTION	COUNTY	TOTAL SHEETS	SHEET NO.
305	27R-3	MCHENRY	431	14
CONTRACT NO. 62517				
ILLINOIS FED. AID PROJECT				