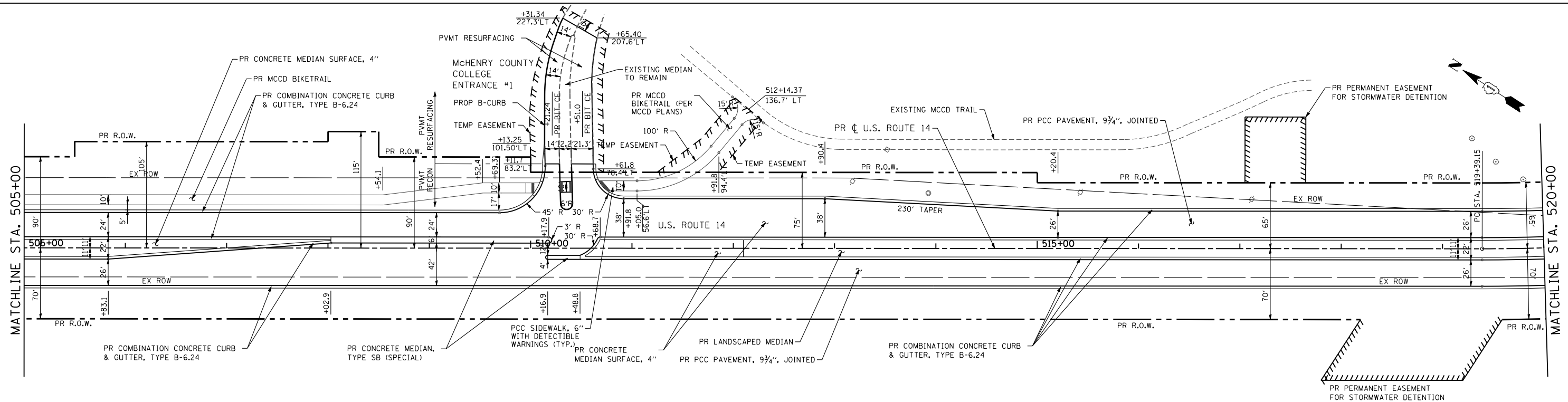


REMOVAL LEGEND

	DRIVEWAY PAVEMENT REMOVAL		AGGREGATE SHOULDER REMOVAL
	PAVEMENT REMOVAL		HOT-MIX ASPHALT SURFACE REMOVAL, 2 1/4"
	MEDIAN REMOVAL		LINEAR ITEM REMOVAL
	SIDEWALK REMOVAL		6" TREE REMOVAL - DIAMETER
	PAVED SHOULDER REMOVAL		

NOTE:
AGGREGATE SHOULDER REMOVAL TO BE PAID FOR AS EARTHWORK EXCAVATION.



PROPOSED LEGEND

	PAVEMENT WIDENING
	WETLAND SITE IMPACT
	TEMPORARY EASEMENT

0 50' 100'
1" = 50'

FILE NAME = S:\1606\CADD Sheets\0162517-sht-plan.dgn	USER NAME = _USERNAME_	DESIGNED - JPW	REVISED -	STATE OF ILLINOIS DEPARTMENT OF TRANSPORTATION	PLAN US ROUTE 14	F.A.P. RTE. 305	SECTION 27R-3	COUNTY MCHENRY	TOTAL SHEETS 431	SHEET NO. 33		
PLOT SCALE = 100.0000' / IN.	CHECKED - MGZ	REVISIED -	REVISIED -			SCALE: 1"=50'	SHEET NO. 33 OF 431 SHEETS	STA. 505+00.00 TO STA. 520+00.00	CONTRACT NO. 62517		ILLINOIS FED. AID PROJECT	
PLOT DATE = 10/14/2013	DATE - 10/15/2013	REVISIED -	REVISIED -									