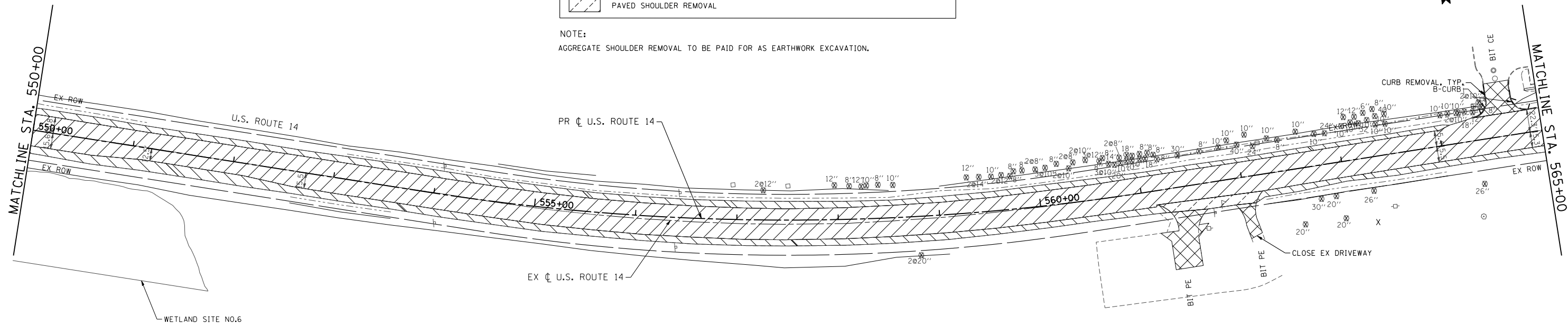


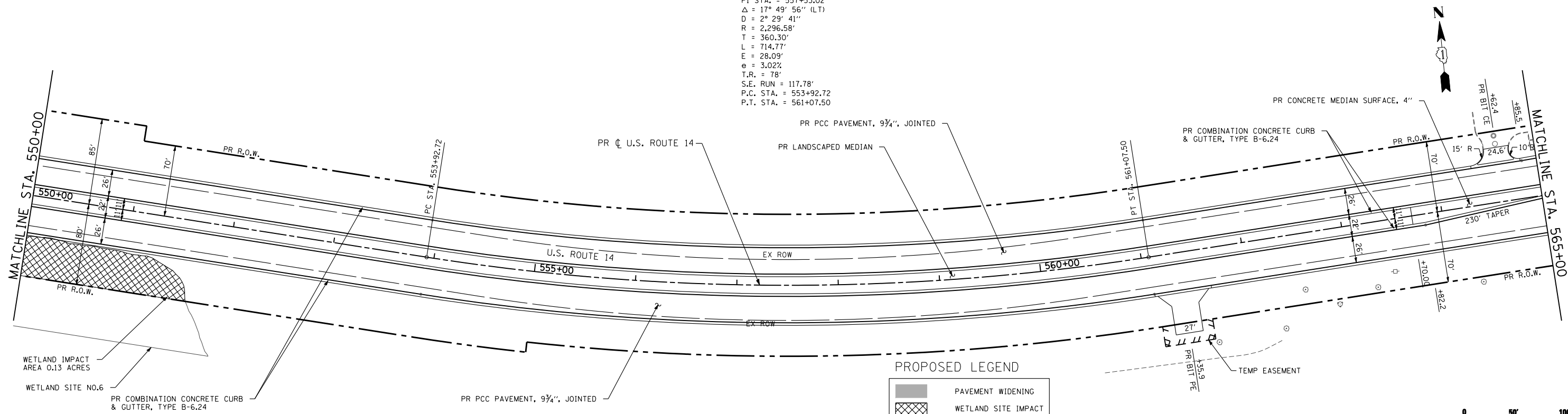
REMOVAL LEGEND

	DRIVEWAY PAVEMENT REMOVAL		AGGREGATE SHOULDER REMOVAL
	PAVEMENT REMOVAL		LINEAR ITEM REMOVAL
	MEDIAN REMOVAL		TREE REMOVAL - DIAMETER
	SIDEWALK REMOVAL		
	PAVED SHOULDER REMOVAL		

NOTE:  
AGGREGATE SHOULDER REMOVAL TO BE PAID FOR AS EARTHWORK EXCAVATION.



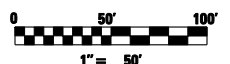
PROP. CURVE P.AL14-6  
 PI STA. = 557+53.02  
 Δ = 17° 49' 56" (LT)  
 D = 2° 29' 41"  
 R = 2,296.58'  
 T = 360.30'  
 L = 714.77'  
 E = 28.09'  
 e = 3.02%  
 T.R. = 78'  
 S.E. RUN = 117.78'  
 P.C. STA. = 553+92.72  
 P.T. STA. = 561+07.50



PROPOSED LEGEND

	PAVEMENT WIDENING
	WETLAND SITE IMPACT
	TEMPORARY EASEMENT

NOTE:  
1. SEE SHEET 220 FOR SUPERELEVATION TRANSITION DETAILS.



FILE NAME = S:\1606\CADD Sheets\0162517-sht-plan.dgn	USER NAME = _USERNAME_	DESIGNED - JPW	REVISED -
		DRAWN - JPW	REVISED -
	PLOT SCALE = 100.0000' / IN.	CHECKED - MGZ	REVISED -
	PLOT DATE = 10/14/2013	DATE - 10/15/2013	REVISED -

STATE OF ILLINOIS  
DEPARTMENT OF TRANSPORTATION

SCALE: 1"=50' SHEET NO. 36 OF 431 SHEETS STA. 550+00.00 TO STA. 565+00.00

PLAN  
US ROUTE 14

F.A.P. RTE. 305	SECTION 27R-3	COUNTY MCHENRY	TOTAL SHEETS 431	SHEET NO. 36
				CONTRACT NO. 62517
ILLINOIS FED. AID PROJECT				