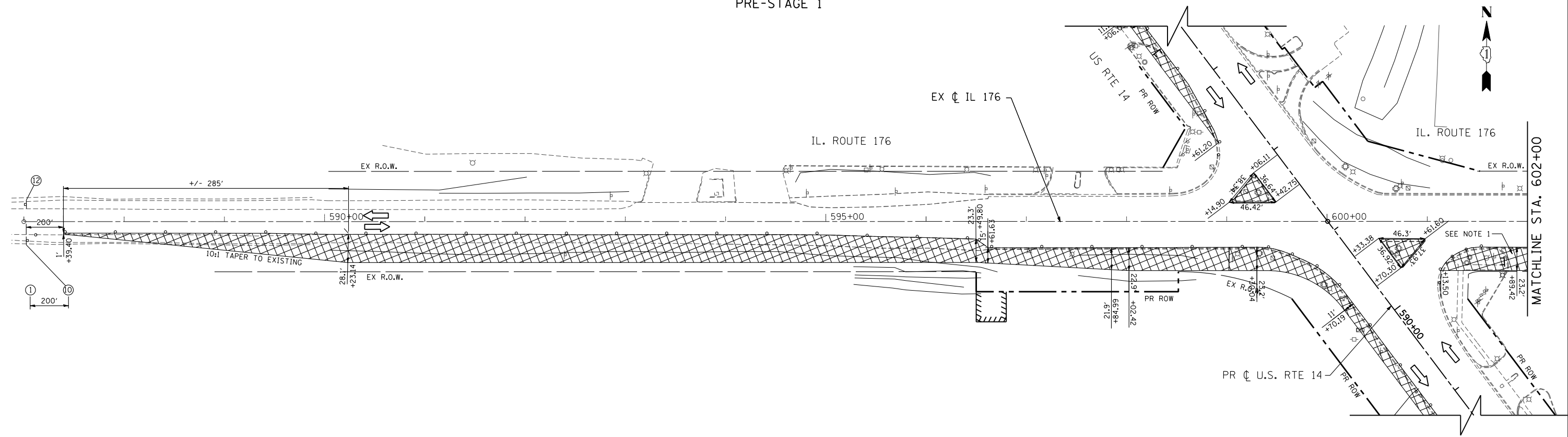
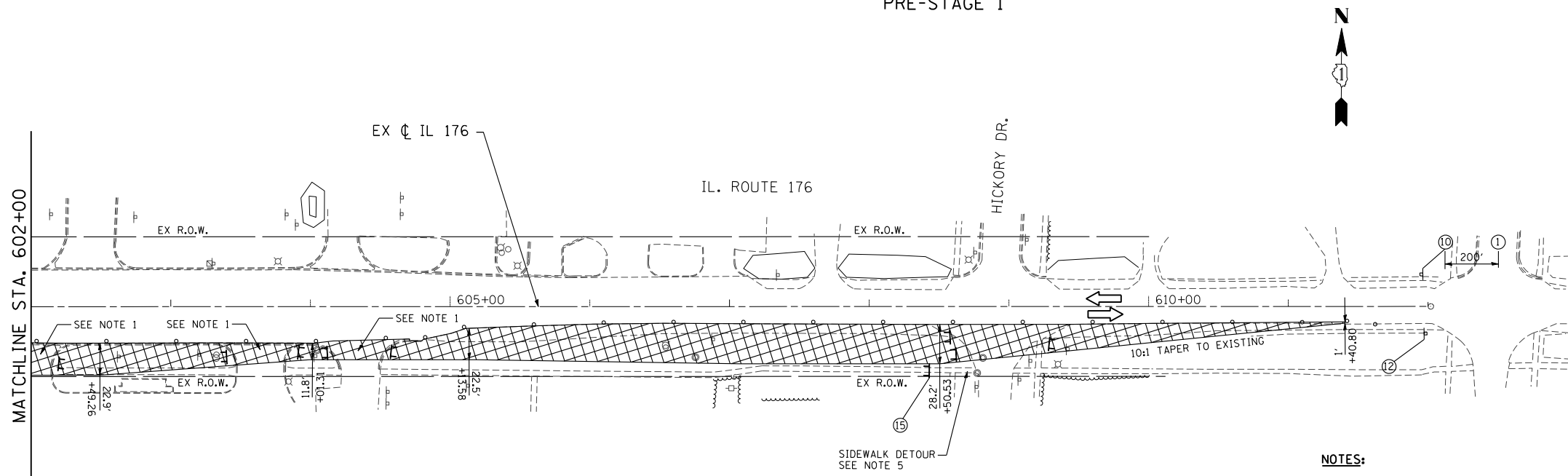


PRE-STAGE 1

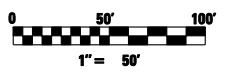


PRE-STAGE 1



NOTES:

1. MAINTAIN ACCESS DURING CONSTRUCTION.
2. SEE SHEET 59 FOR MAINTENANCE OF CONSTRUCTION GENERAL NOTES, SEQUENCE OF CONSTRUCTION AND TEMPORARY TRAFFIC SIGN LEGEND.
3. UTILIZE THE EXISTING SPEED LIMIT SIGNS WITHIN CONSTRUCTION LIMITS UNLESS NOTED OTHERWISE. THE SIGNS SIZES SHALL MATCH THE SIZES OF THE EXISTING SIGNS IN FIELD.
4. SEE IL 176 AND US RTE 14 INTERSECTION TEMPORARY TRAFFIC SIGNALS SHEET.
5. PEDESTRIAN TRAFFIC WILL BE DETOURED ON IL 176 WEST OF HICKORY DR AND ON US 14 NORTH OF HICKORY DRIVE. PEDESTRIAN TRAFFIC WILL BE DIRECTED TO USE HICKORY DR SIDEWALK DURING STAGES PRE-STAGE 1 THRU 2. UTILIZE STANDARD 701801.
6. UTILIZE EXISTING PAVEMENT MARKINGS.



FILE NAME =	USER NAME = .USERNAME.	DESIGNED - JPW	REVISED -
S:\1606\CADD Sheets\0162517-sht-stagingP	ev.dgn	DRAWN - JPW	REVISED -
PLOT SCALE = 100.0000' / IN.	CHECKED - MGZ	REVISOR -	REVISED -
PLOT DATE = 10/14/2013	DATE - 10/15/2013	REVISOR -	REVISED -

STATE OF ILLINOIS
DEPARTMENT OF TRANSPORTATION

MAINTENANCE OF TRAFFIC PLAN
IL 176 PRE-STAGE 1

SCALE: 1"=50' SHEET NO. 65 OF 431 SHEETS STA. 587+39.40 TO STA. 611+40.80

F.A. RTE.	SECTION	COUNTY	TOTAL SHEETS	SHEET NO.
305	27R-3	MCHENRY	431	65
CONTRACT NO. 62517			ILLINOIS FED. AID PROJECT	