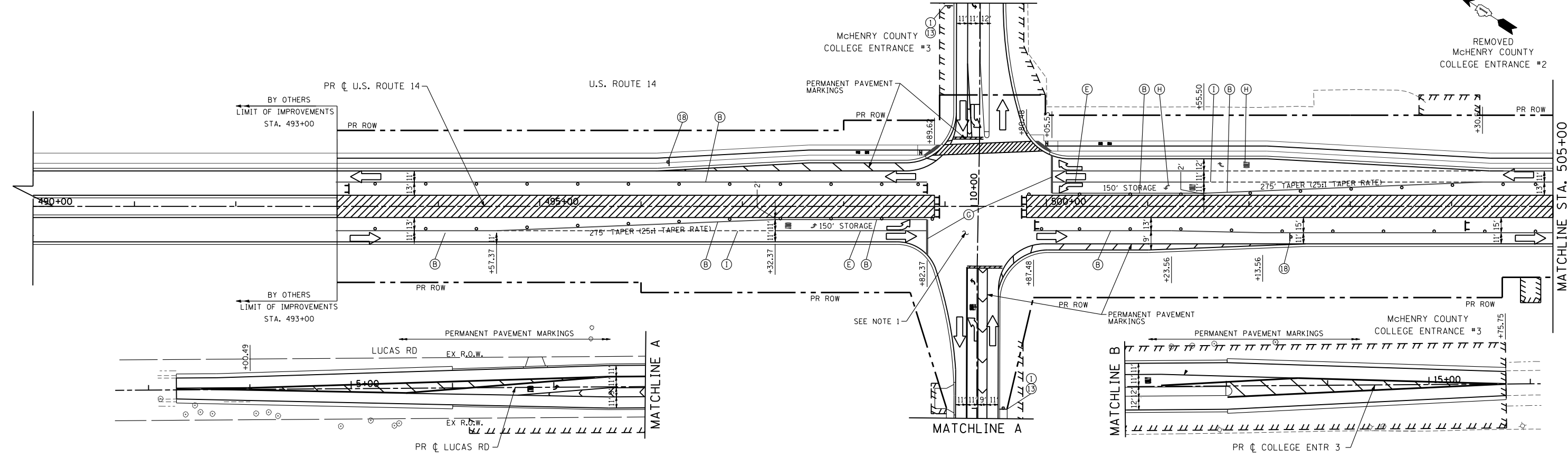
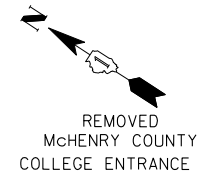
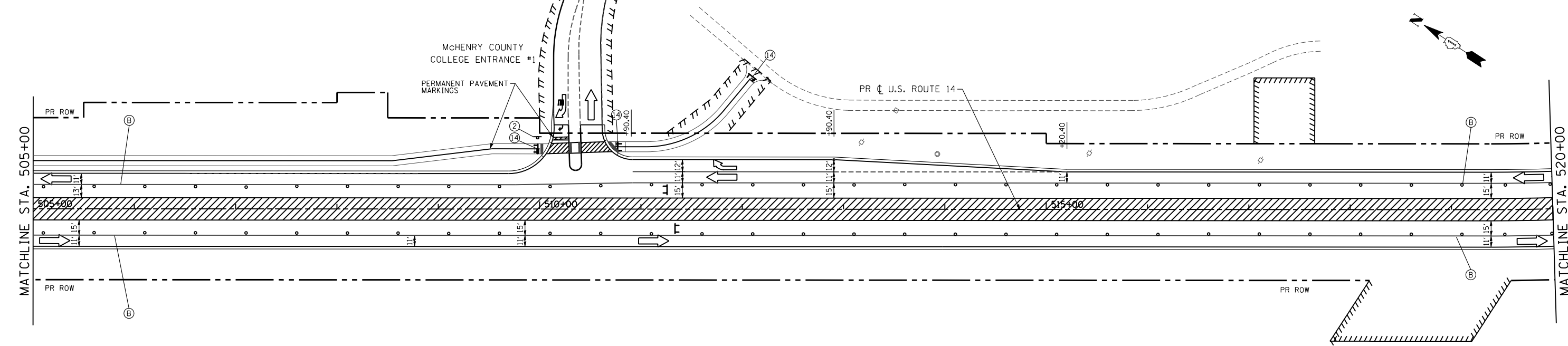


STAGE 3

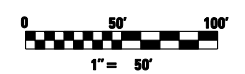
MATCHLINE B



STAGE 3



- NOTES:**
1. TRAFFIC SIGNAL AT COLLEGE ENTRANCE NO. 3 MUST BE OPERATIONAL PRIOR TO STAGE 3.
 2. SEE SHEET 59 FOR MAINTENANCE OF CONSTRUCTION GENERAL NOTES, SEQUENCE OF CONSTRUCTION AND TEMPORARY TRAFFIC SIGN LEGEND.
 3. UTILIZE THE EXISTING SPEED LIMIT SIGNS WITHIN CONSTRUCTION LIMITS UNLESS NOTED OTHERWISE. THE SIGNS SIZES SHALL MATCH THE SIZES OF THE EXISTING SIGNS IN FIELD.



FILE NAME = s:\1606\cadd sheets\0162517-sht-staging3.dgn	USER NAME = _USERNAME_	DESIGNED - JPW	REVISED -
		DRAWN - JPW	REVISED -
	PLOT SCALE = 100.0000' / IN.	CHECKED - MGZ	REVISED -
	PLOT DATE = 10/9/2013	DATE - 10/15/2013	REVISED -

**STATE OF ILLINOIS
DEPARTMENT OF TRANSPORTATION**

**MAINTENANCE OF TRAFFIC PLAN
US ROUTE 14 - STAGE 3**

SCALE: 1"=50' SHEET NO. 89 OF 431 SHEETS STA. 490+00 TO STA. 520+00

F.A. RTE.	SECTION	COUNTY	TOTAL SHEETS	SHEET NO.
305	27R-3	MCHENRY	431	89
CONTRACT NO. 62517			ILLINOIS FED. AID PROJECT	