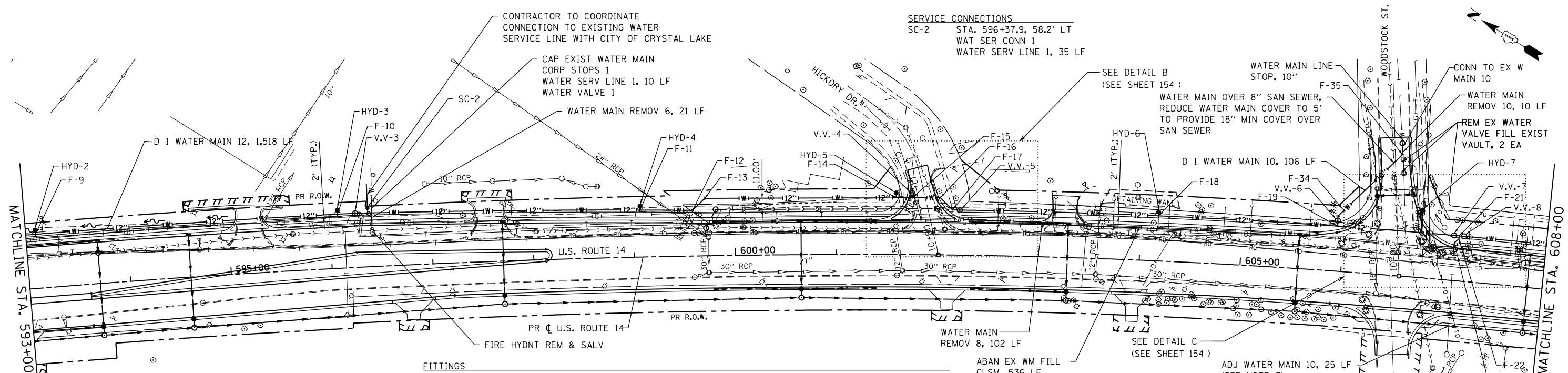


PLAN	SURVEYED	DATE
	PLOTTED	BY
	ALIGNED	
	CHECKED	
	FILED	
	NO.	

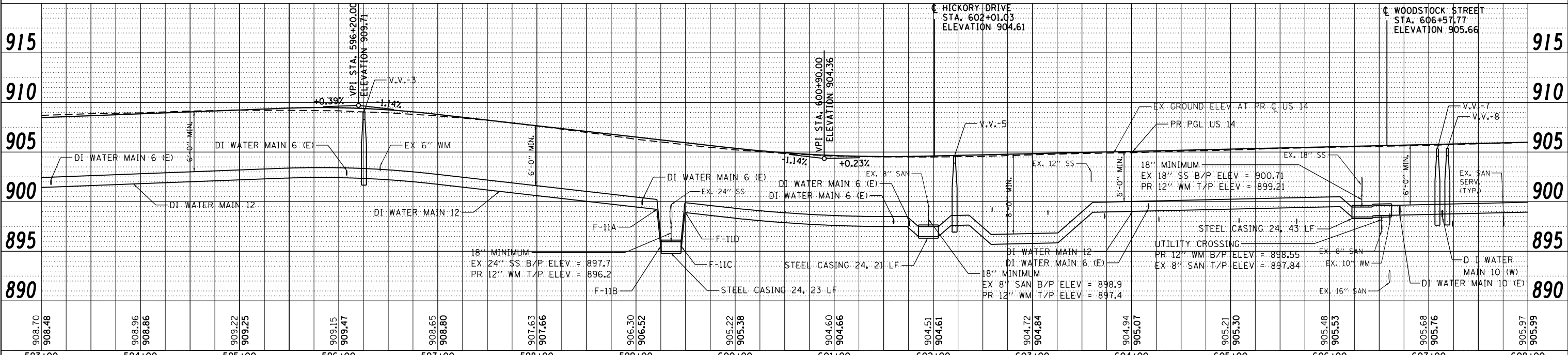
PROFILE	SURVEYED	DATE
	PLOTTED	BY
	GRADES	
	CHECKED	
	STRUCTURE	
	NOTATIONS	
	CHFD	
	NO.	



FITTINGS					
F-9	STA. 593+09.6, 53.6' LT	F-12	STA. 599+58.3, 45.3' LT	F-19	STA. 605+93.5, 44.6' LT
	DI WAT MN TEE, 12 X 6		DI WT MNF 12 45.0 DB		DI WAT MN TEE, 12 X 10
F-10	STA. 596+08.0, 53.6' LT	F-13	STA. 599+70.4, 56.9' LT	F-20	STA. 606+75.7, 44.6' LT
	DI WAT MN TEE, 12 X 6		DI WT MNF 12 45.0 DB		DI WAT MN TEE, 12 X 6
F-11	STA. 599+06.2, 46.6' LT	F-14	STA. 601+59.0, 56.3' LT	F-21	STA. 607+13.7, 44.6' LT
	DI WAT MN TEE, 12 X 6		DI WAT MN TEE, 12 X 6		DI WT MNF 10 45.0 DB
F-11A	STA. 599+19.6, 46.2' LT	F-15	STA. 601+74.4, 56.3' LT	F-22	STA. 607+13.7, 41.6' LT
	DI WT MNF 12 45.0 DB		DI WAT MN TEE, 12 X 6		DI WT MNF 10 45.0 DB
F-11B	STA. 599+23.9, 46.1' LT	F-16	STA. 602+02.1, 56.6' LT	F-23	STA. 607+09.5, 37.4' LT
	DI WT MNF 12 45.0 DB		DI WT MNF 12 45.0 DB		DI WT MNF 10 45.0 DB
F-11C	STA. 599+46.9, 45.5' LT	F-17	STA. 602+14.4, 44.6' LT	F-34	STA. 606+93.5, 54.7' LT
	DI WT MNF 12 45.0 DB		DI WT MNF 12 45.0 DB		DI WT MNF 10 45.0 DB
F-11D	STA. 599+50.9, 45.4' LT	F-18	STA. 604+17.1, 44.6' LT	F-35	STA. 606+51.8, 119.9' LT
	DI WT MNF 12 45.0 DB		DI WAT MN TEE, 12 X 6		DI WT MNF 10 45.0 DB

- NOTES**
- THE LOCATION OF EXISTING UTILITIES IS APPROXIMATE. FIELD VERIFY LOCATION PRIOR TO CONSTRUCTION.
 - WATER MAIN AND SERVICE LINES SHALL BE PLACED 6'-0" MINIMUM BELOW THE PROPOSED GRADE ABOVE THE CENTER OF THE PROPOSED MAIN OR LINE UNLESS OTHERWISE NOTED.
 - SEPARATION BETWEEN WATER MAIN AND SEWERS TO BE PROVIDED PER CITY OF CRYSTAL LAKE STANDARDS. THE CONTRACTOR SHALL CONTACT THE CITY OF CRYSTAL LAKE PUBLIC WORKS DEPARTMENT AT (815) 356-3614 24 HOURS NOTICE TO ANY WATER MAIN SHUTDOWN.

HYDRANTS			
HYD-2	STA. 593+09.6, 57.6' LT	HYD-5	STA. 601+58.8, 61.2' LT
	FIRE HYD W/AUX V & VB		FIRE HYD W/AUX V & VB
	D I WATER MAIN 6, 4 LF		D I WATER MAIN 6, 6 LF
HYD-3	STA. 596+08.0, 57.6' LT	HYD-6	STA. 604+17.1, 48.6' LT
	FIRE HYD W/AUX V & VB		FIRE HYD W/AUX V & VB
	D I WATER MAIN 6, 4 LF		D I WATER MAIN 6, 4 LF
HYD-4	STA. 599+06.3, 50.6' LT	HYD-7	STA. 606+75.7, 66.8' LT
	FIRE HYD W/AUX V & VB		FIRE HYD W/AUX V & VB
	D I WATER MAIN 6, 4 LF		D I WATER MAIN 6, 17 LF



FILE NAME =	USER NAME =	DESIGNED -	REVISED -	STATE OF ILLINOIS		WATER MAIN PLAN & PROFILE		F.A.P. R.T.E.	SECTION	COUNTY	TOTAL SHEETS
S:\1606\CADD Sheets\162517-shr-water.dgn	_USERNAME_	JWM	-	DEPARTMENT OF TRANSPORTATION		US ROUTE 14		305	27R-3	MCHENRY	431
		DRAWN -	REVISED -					CONTRACT NO. 62517			
		JWM	-					ILLINOIS FED. AID PROJECT			
		CHECKED -	REVISED -								
		MGZ	-								
		DATE -	REVISED -								
		10/15/2013	-								