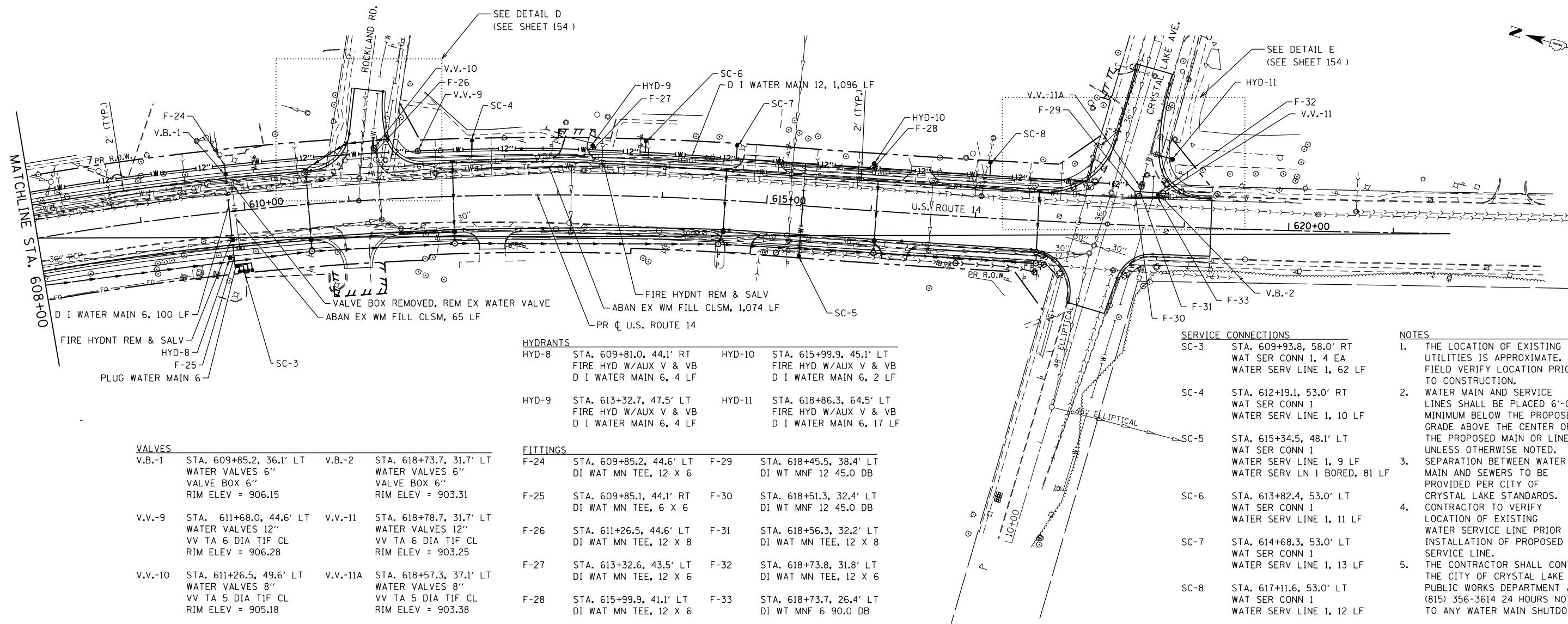


DATE	
BY	
PLAN	SURVEYED
	PLOTTED
	ALIGNED
	CHECKED
	FILED
	NO.
	NO.
	NO.

DATE	
BY	
PROFILE	SURVEYED
	PLOTTED
	GRADES CHECKED
	STRUCTURE NOTATIONS CHECKED
	NO.
	NO.
	NO.



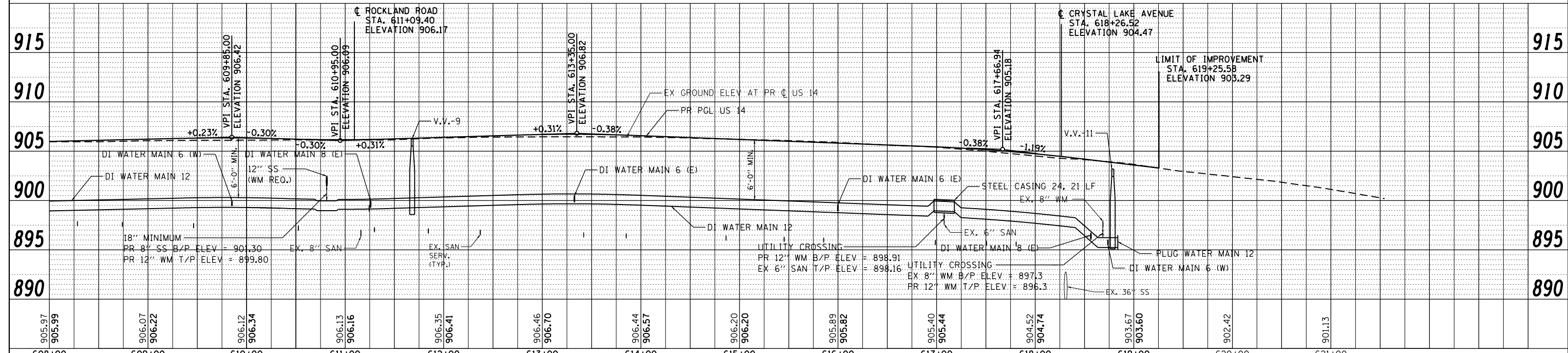
VALVES			
V.B.-1	STA. 609+85.2, 36.1' LT	V.B.-2	STA. 618+73.7, 31.7' LT
	WATER VALVES 6"		WATER VALVES 6"
	VALVE BOX 6"		VALVE BOX 6"
	RIM ELEV = 906.15		RIM ELEV = 903.31
V.V.-9	STA. 611+68.0, 44.6' LT	V.V.-11	STA. 618+78.7, 31.7' LT
	WATER VALVES 12"		WATER VALVES 12"
	VV TA 6 DIA TIF CL		VV TA 6 DIA TIF CL
	RIM ELEV = 906.28		RIM ELEV = 903.25
V.V.-10	STA. 611+26.5, 49.6' LT	V.V.-11A	STA. 618+57.3, 37.1' LT
	WATER VALVES 8"		WATER VALVES 8"
	VV TA 5 DIA TIF CL		VV TA 5 DIA TIF CL
	RIM ELEV = 905.18		RIM ELEV = 903.38

HYDRANTS			
HYD-8	STA. 609+81.0, 44.1' RT	HYD-10	STA. 615+99.9, 45.1' LT
	FIRE HYD W/AUX V & VB		FIRE HYD W/AUX V & VB
	DI WATER MAIN 6, 4 LF		DI WATER MAIN 6, 2 LF
HYD-9	STA. 613+32.7, 47.5' LT	HYD-11	STA. 618+86.3, 64.5' LT
	FIRE HYD W/AUX V & VB		FIRE HYD W/AUX V & VB
	DI WATER MAIN 6, 4 LF		DI WATER MAIN 6, 17 LF

FITTINGS			
F-24	STA. 609+85.2, 44.6' LT	F-29	STA. 618+45.5, 38.4' LT
	DI WAT MN TEE, 12 X 6		DI WT MNF 12 45.0 DB
F-25	STA. 609+85.1, 44.1' RT	F-30	STA. 618+51.3, 32.4' LT
	DI WAT MN TEE, 6 X 6		DI WT MNF 12 45.0 DB
F-26	STA. 611+26.5, 44.6' LT	F-31	STA. 618+56.3, 32.2' LT
	DI WAT MN TEE, 12 X 8		DI WAT MN TEE, 12 X 8
F-27	STA. 613+32.6, 43.5' LT	F-32	STA. 618+73.8, 31.8' LT
	DI WAT MN TEE, 12 X 6		DI WAT MN TEE, 12 X 6
F-28	STA. 615+99.9, 41.1' LT	F-33	STA. 618+73.7, 26.4' LT
	DI WAT MN TEE, 12 X 6		DI WT MNF 6 90.0 DB

SERVICE CONNECTIONS	
SC-3	STA. 609+93.8, 58.0' RT WAT SER CONN 1, 4 EA WATER SERV LINE 1, 62 LF
SC-4	STA. 612+19.1, 53.0' RT WAT SER CONN 1 WATER SERV LINE 1, 10 LF
SC-5	STA. 615+34.5, 48.1' LT WAT SER CONN 1 WATER SERV LN 1 BORED, 81 LF
SC-6	STA. 613+82.4, 53.0' LT WAT SER CONN 1 WATER SERV LINE 1, 11 LF
SC-7	STA. 614+68.3, 53.0' LT WAT SER CONN 1 WATER SERV LINE 1, 13 LF
SC-8	STA. 617+11.6, 53.0' LT WAT SER CONN 1 WATER SERV LINE 1, 12 LF

- NOTES**
1. THE LOCATION OF EXISTING UTILITIES IS APPROXIMATE. FIELD VERIFY LOCATION PRIOR TO CONSTRUCTION.
 2. WATER MAIN AND SERVICE LINES SHALL BE PLACED 6'-0" MINIMUM BELOW THE PROPOSED GRADE ABOVE THE CENTER OF THE PROPOSED MAIN OR LINE UNLESS OTHERWISE NOTED.
 3. SEPARATION BETWEEN WATER MAIN AND SEWERS TO BE PROVIDED PER CITY OF CRYSTAL LAKE STANDARDS.
 4. CONTRACTOR TO VERIFY LOCATION OF EXISTING WATER SERVICE LINE PRIOR TO INSTALLATION OF PROPOSED SERVICE LINE.
 5. THE CONTRACTOR SHALL CONTACT THE CITY OF CRYSTAL LAKE PUBLIC WORKS DEPARTMENT AT (815) 356-3614 24 HOURS NOTICE TO ANY WATER MAIN SHUTDOWN.



FILE NAME = S:\1606\CADD Sheets\0162517-shr-water.dgn	USER NAME = .JWM	DESIGNED - JWM	REVISED -	STATE OF ILLINOIS DEPARTMENT OF TRANSPORTATION	WATER MAIN PLAN & PROFILE US ROUTE 14			F.A.P. RTE. 305	SECTION 27R-3	COUNTY MCHENRY	TOTAL SHEETS 431	SHEET NO. 153
PLOT SCALE = 100.0000' / 1"	CHECKED - MGZ	REVISIED -	SCALE: 1"=50'		SHEET NO. 153 OF 431 SHEETS			STA. 608+00.00 TO STA. 619+25.58			CONTRACT NO. 62517	
PLOT DATE = 6/4/2014	DATE - 10/15/2013	REVISIED -	ILLINOIS FED. AID PROJECT									