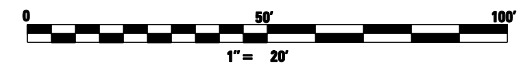
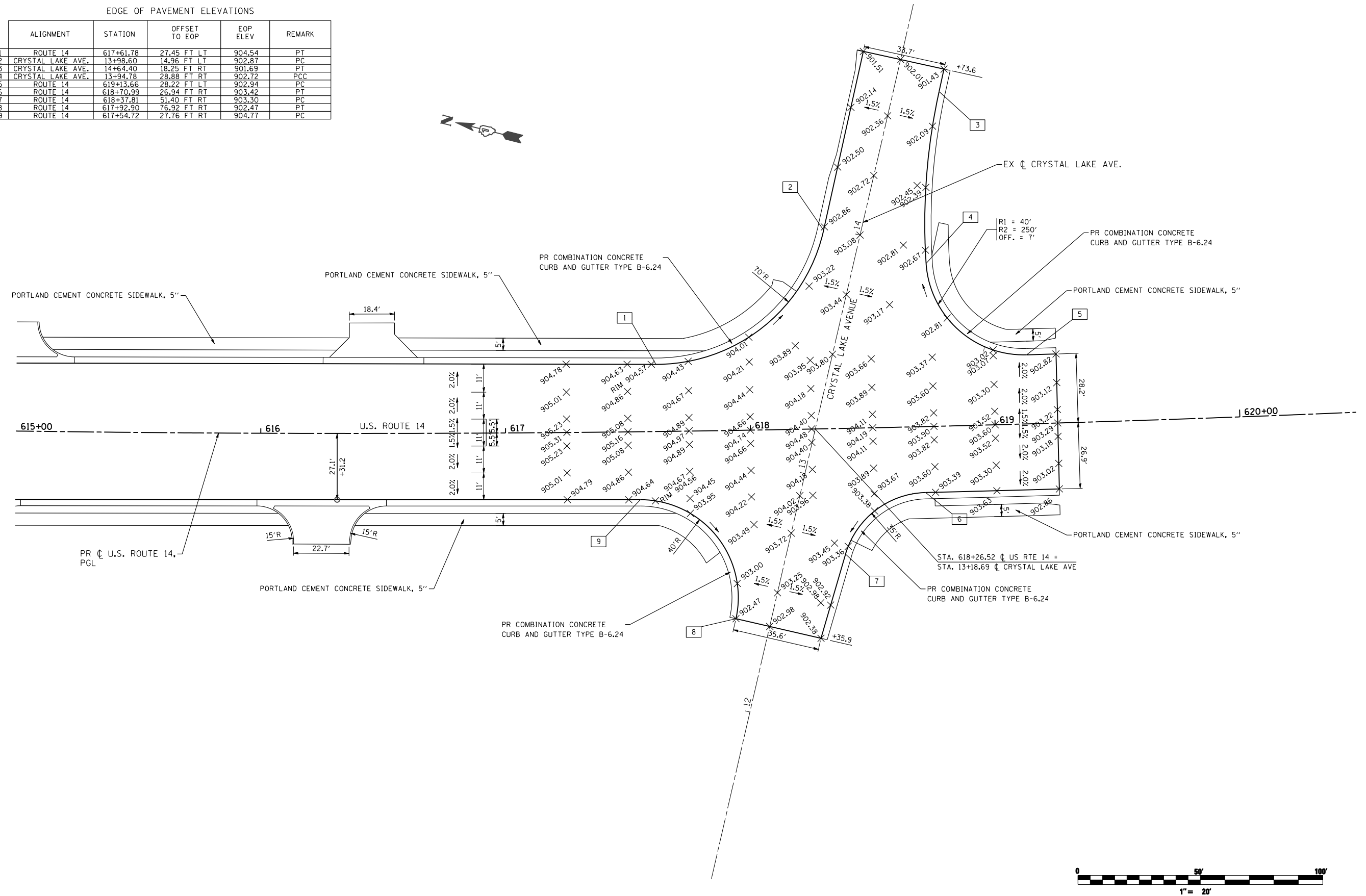


EDGE OF PAVEMENT ELEVATIONS

	ALIGNMENT	STATION	OFFSET TO EOP	EOP ELEV	REMARK
1	ROUTE 14	617+61.78	27.45 FT LT	904.54	PT
2	CRYSTAL LAKE AVE.	13+98.60	14.96 FT LT	902.87	PC
3	CRYSTAL LAKE AVE.	14+64.40	18.25 FT RT	901.69	PT
4	CRYSTAL LAKE AVE.	13+94.78	28.88 FT RT	902.72	PCC
5	ROUTE 14	619+13.66	28.22 FT LT	902.94	PC
6	ROUTE 14	618+70.99	26.94 FT RT	903.42	PT
7	ROUTE 14	618+37.81	51.40 FT RT	903.30	PC
8	ROUTE 14	617+92.90	76.92 FT RT	902.47	PT
9	ROUTE 14	617+54.72	27.76 FT RT	904.77	PC



FILE NAME =	USER NAME = .USERNAME.	DESIGNED - CGC	REVISED -
S:\1606\CADD Sheets\0162517-sht-intersec.dgn		DRAWN - CGC	REVISED -
	PLOT SCALE = 40.0000' / IN.	CHECKED - MGZ	REVISED -
	PLOT DATE = 10/9/2013	DATE - 10/15/2013	REVISED -

**STATE OF ILLINOIS
DEPARTMENT OF TRANSPORTATION**

INTERSECTION JOINTING DETAILS	
CRYSTAL LAKE ROAD & U.S. ROUTE 14	
SCALE: 1"=20'	SHEET NO. 218 OF 431 SHEETS
STA.	TO STA.

F.A.P. RTE.	SECTION	COUNTY	TOTAL SHEETS	SHEET NO.
305	27R-3	MCHENRY	431	218
CONTRACT NO. 62517				
ILLINOIS FED. AID PROJECT				