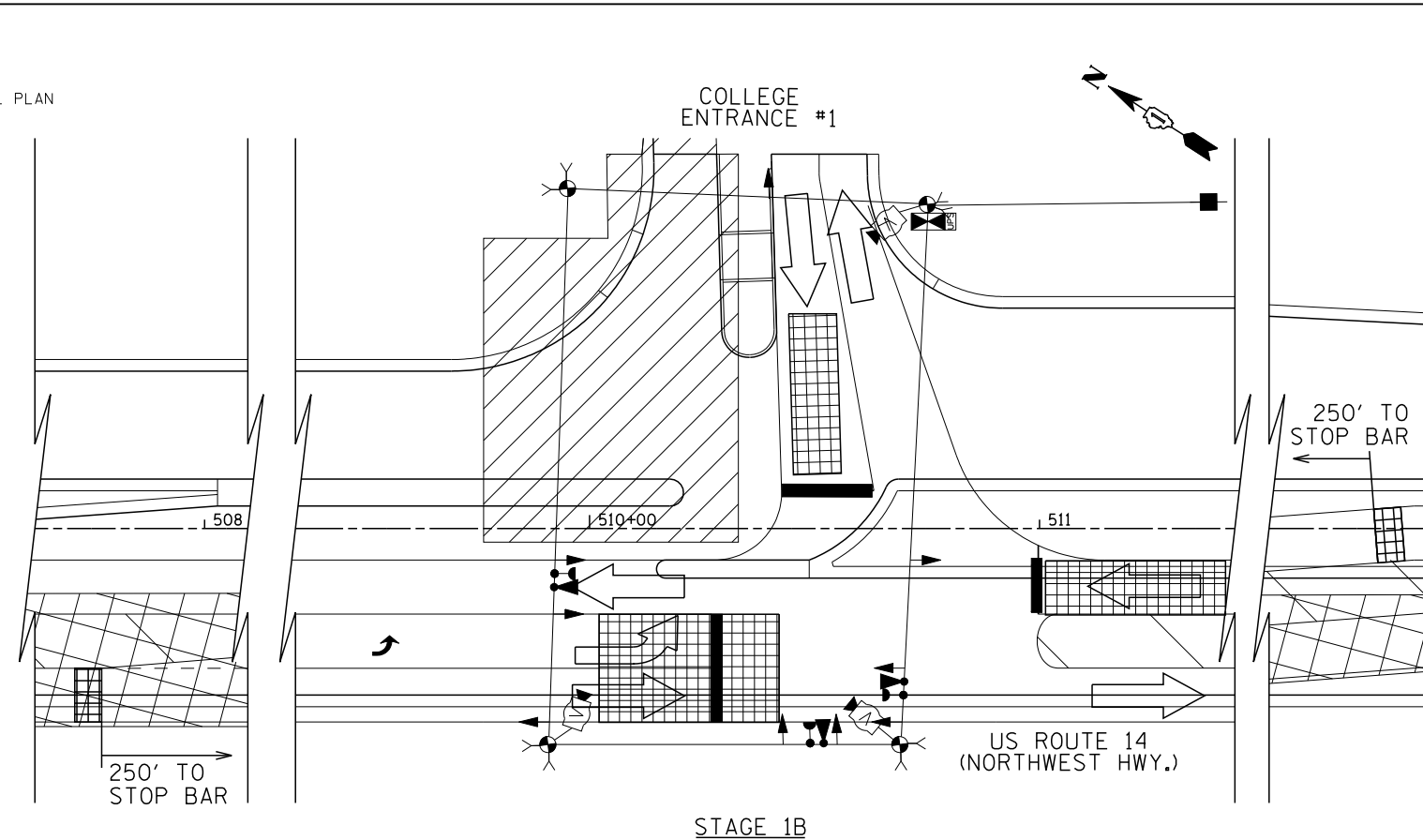
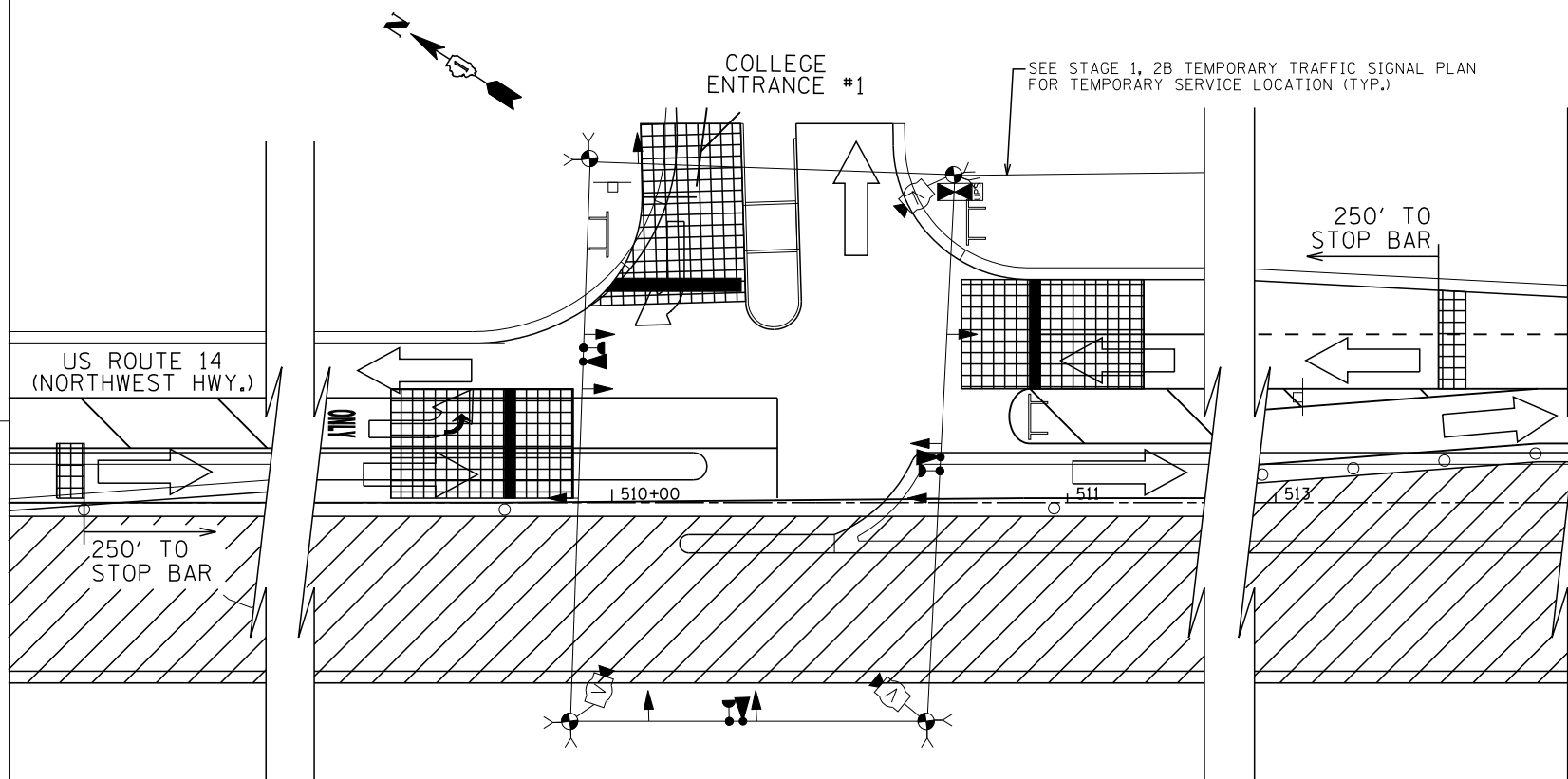


STAGE 1A



STAGE 1B



STAGE 2, 2A

NOTE:

THE PERMANENT TRAFFIC SIGNAL INSTALLATION AT COLLEGE ENTRANCE #3 SHALL BE FULLY OPERATIONAL PRIOR TO THE START OF STAGE 3 CONSTRUCTION. THE CONTRACTOR SHALL DEACTIVATE AND REMOVE THE TEMPORARY TRAFFIC SIGNAL AT COLLEGE ENTRANCE #1 UPON ACTIVATION OF THE PERMANENT TRAFFIC SIGNAL INSTALLATION AT COLLEGE ENTRANCE #3. QUANTITIES FOR THE TEMPORARY TRAFFIC SIGNAL AND REMOVAL OF THE EXISTING TRAFFIC SIGNAL INSTALLATION AT COLLEGE ENTRANCE #1 ARE SHOWN IN THE SCHEDULE OF QUANTITIES FOR COLLEGE ENTRANCE #3.

EJM ENGINEERING, INC.
411 South Wells Street Suite 1000
Chicago, Illinois 60607



FILE NAME = ...\\D162517-SHT-TS12.dgn	USER NAME = rswanson	DESIGNED - GR	REVISED -
		DRAWN - AB	REVISED -
	PLOT SCALE = 20:1	CHECKED - BS	REVISED -
	PLOT DATE = 10/8/2013	DATE - 10/15/2013	REVISED -

STATE OF ILLINOIS
DEPARTMENT OF TRANSPORTATION

TEMPORARY TRAFFIC SIGNAL INSTALLATION PLAN
US RTE. 14 AND COLLEGE ENTRANCE NO. 1

SCALE: 20:1 SHEET NO. OF SHEETS STA. TO STA.

F.A.P. RTE.	SECTION	COUNTY	TOTAL SHEETS	SHEET NO.
305	27R-3	MCHENRY	431	288
FED. ROAD DIST. NO. 1 ILLINOIS FED. AID PROJECT			CONTRACT NO. 62517	