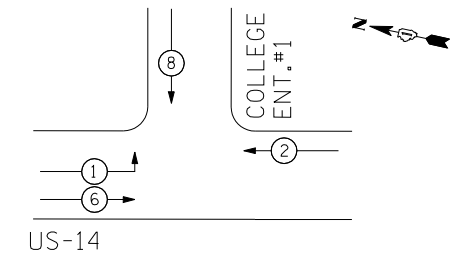


TEMPORARY CABLE PLAN

TEMPORARY CONTROLLER SEQUENCE

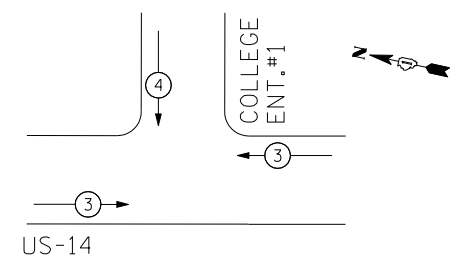


TEMPORARY PHASE DESIGNATION DIAGRAM ALL STAGES

LEGEND

- ◉ DUAL ENTRY PHASE
- ◻ SINGLE ENTRY PHASE
- OL OVERLAP
- ◉ PEDESTRIAN PHASE
- NUMBER REFERS TO ASSOCIATED PHASE

TEMPORARY EMERGENCY VEHICLE PREEMPTION SEQUENCE



PROPOSED EMERGENCY VEHICLE PREEMPTORS	
EMERGENCY VEHICLE PREEMPTOR	3 4
MOVEMENT	↔ ↓

I.D.O.T.
TRAFFIC SIGNAL INSTALLATION
ELECTRICAL SERVICE REQUIREMENTS

TYPE	NO. OF LAMPS	WATTAGE		% OPERATIONS	TOTAL WATTAGE
		INCAND.	LED		
SIGNAL (RED)	9	135	17	0.50	76.50
(YELLOW)	9	135	25	0.25	56.25
(GREEN)	9	135	15	0.25	33.75
ARROW	4	135	12	0.10	4.80
CONTROLLER	1	100	100	1.00	100.00
VIDEO SYSTEM	1	150	150	1.00	150.00

ENERGY COSTS TO: TOTAL = 421.30

MCHENRY COUNTY COLLEGE

8900 US ROUTE 14
CRYSTAL LAKE, ILLINOIS 60012

ENERGY SUPPLY: CONTACT: MIKE WIDHALM
PHONE: (815) 263-5624
COMPANY: COMED

EJM ENGINEERING, INC.
411 South Wells Street Suite 1000
Chicago, Illinois 60607



FILE NAME = ... \D162517-SHT-TS13.dgn	USER NAME = rswanson	DESIGNED - GR	REVISED -
		DRAWN - AB	REVISED -
		CHECKED - BS	REVISED -
		DATE - 10/15/2013	REVISED -

**STATE OF ILLINOIS
DEPARTMENT OF TRANSPORTATION**

**TEMPORARY CABLE PLAN, PHASE DESIGNATION DIAGRAM, AND
EMERGENCY VEHICLE PREEMPTION SEQUENCE
US RTE. 14 AND COLLEGE ENTRANCE NO. 1**

SCALE: NONE SHEET NO. OF SHEETS STA. TO STA.

F.A.P. RTE.	SECTION	COUNTY	TOTAL SHEETS	SHEET NO.
305	27R-3	MCHENRY	431	289
FED. ROAD DIST. NO. 1 ILLINOIS FED. AID PROJECT			CONTRACT NO. 62517	