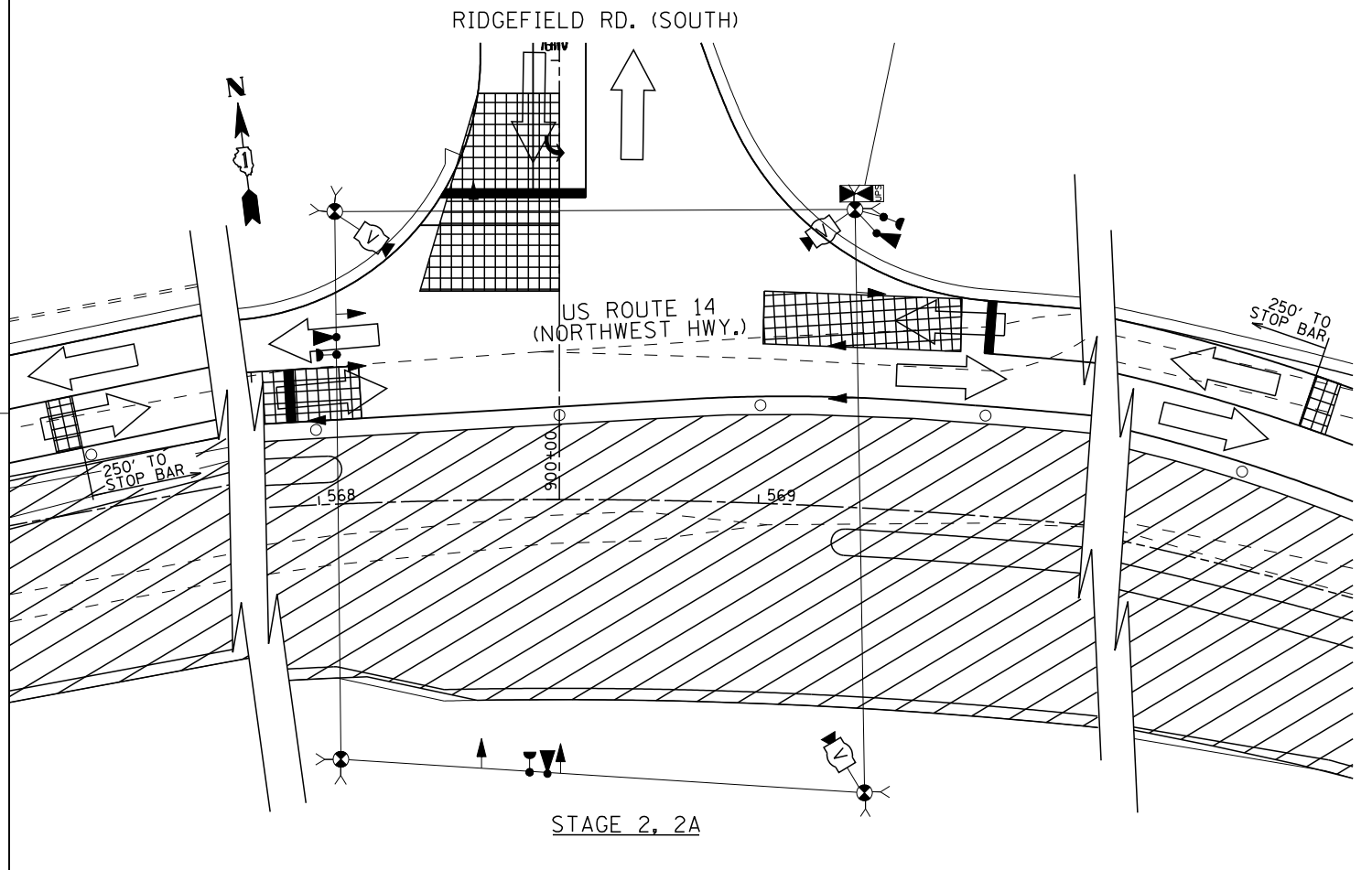
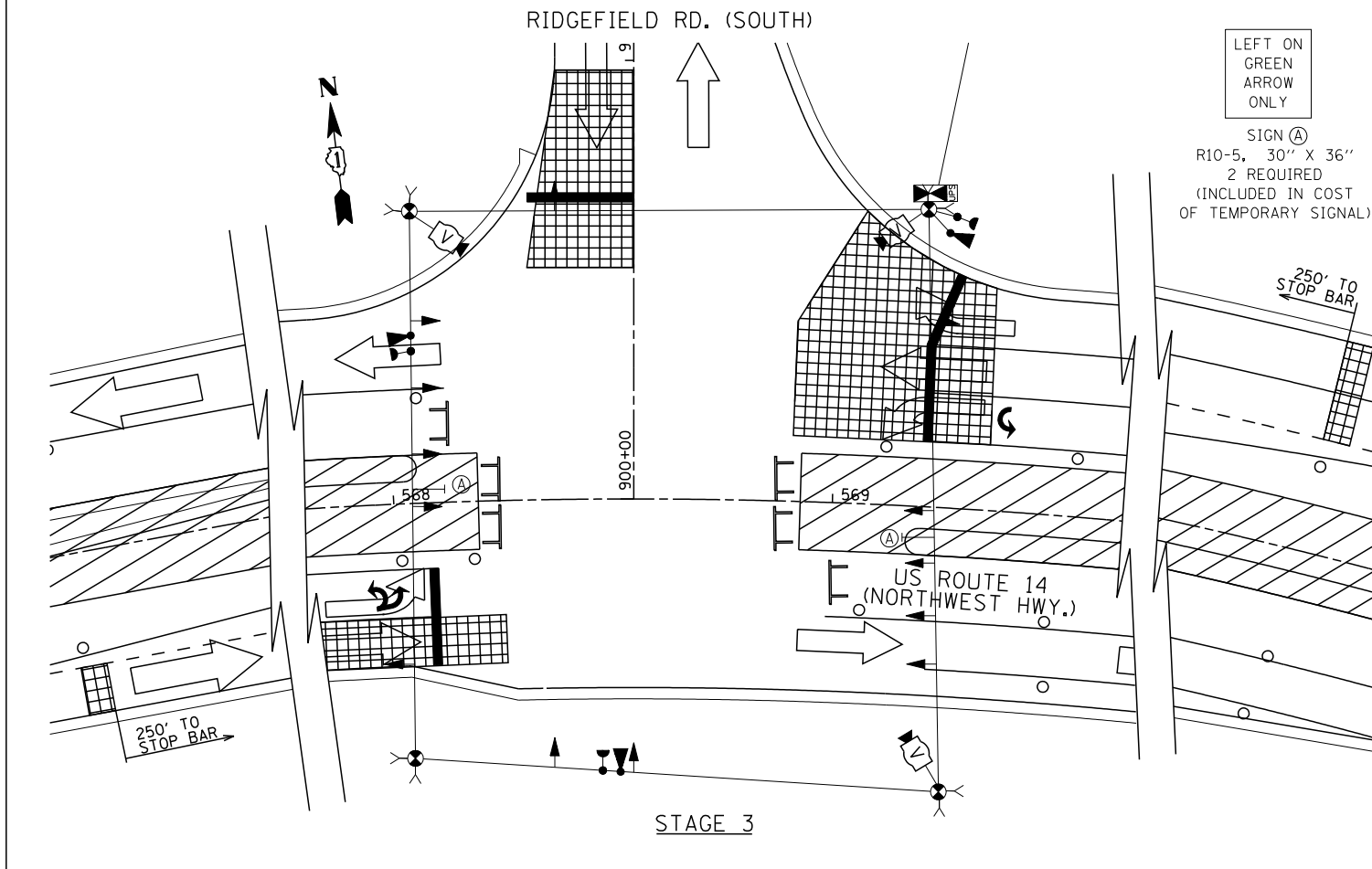


- NOTES
1. THE CONTRACTOR SHALL DEACTIVATE AND REMOVE THE STAGE 1 TEMPORARY SIGNAL INSTALLATION, AS NOTED FOR REMOVAL, UPON OPENING STAGE 1A TO TRAFFIC. CONTRACTOR SHALL RETAIN WOOD POLE AND CONTROLLER CABINET COMPLETE AND CONNECTION TO SERVICE INSTALLATION.
 2. THE CONTRACTOR SHALL ACTIVATE THE STAGE 1A TEMPORARY SIGNAL SHOWN UPON DEACTIVATION OF THE STAGE 1 TEMPORARY SIGNAL INSTALLATION. TRAFFIC SIGNAL OPERATIONS SHALL BE CONTINUOUS DURING THE TRANSITION FROM STAGE 1 TO STAGE 1A TRAFFIC, OR AS DIRECTED BY THE ENGINEER.
 3. THE FAR OUT LIGHT DETECTOR ON US 14 MUST BE MAINTAINED DURING ALL STAGES OF CONSTRUCTION. SEE TEMPORARY TRAFFIC SIGNAL PLAN FOR STAGE 1 FOR LOCATION.
 4. 24" X 24" R3-2 "NO LEFT TURN" SIGNS SHALL BE RELOCATED FROM THE STAGE TEMPORARY TRAFFIC SIGNAL, AND SHALL REMAIN IN PLACE UNTIL STAGE 2A. THE SIGNS SHALL BE REMOVED DURING STAGE 3. THE COST OF THE SIGNS AND THEIR RELOCATION AND REMOVAL IS INCLUDED IN THE PRICE OF THE TEMPORARY TRAFFIC SIGNAL INSTALLATION.

STAGE 1A, 1B



STAGE 2, 2A



STAGE 3

LEFT ON GREEN ARROW ONLY
SIGN (A)
R10-5, 30" X 36"
2 REQUIRED
(INCLUDED IN COST OF TEMPORARY SIGNAL)

EJM ENGINEERING, INC.
411 South Wells Street Suite 1000
Chicago, Illinois 60607

FILE NAME = ... \D162517-SHT-TS22.dgn	USER NAME = rswanson	DESIGNED - JW	REVISED -
		DRAWN - AB	REVISED -
		CHECKED - BS	REVISED -
		DATE - 10/15/2013	REVISED -

**STATE OF ILLINOIS
DEPARTMENT OF TRANSPORTATION**

**TEMPORARY TRAFFIC SIGNAL INSTALLATION PLAN
US RTE. 14 AND RIDGEFIELD RD. (SOUTH)**

SCALE: 20:1

SHEET NO.	OF SHEETS	STA.	TO STA.
-----------	-----------	------	---------

F.A.P. RTE.	SECTION	COUNTY	TOTAL SHEETS	SHEET NO.
305	27R-3	MCHENRY	431	294
FED. ROAD DIST. NO. 1 ILLINOIS FED. AID PROJECT			CONTRACT NO. 62517	