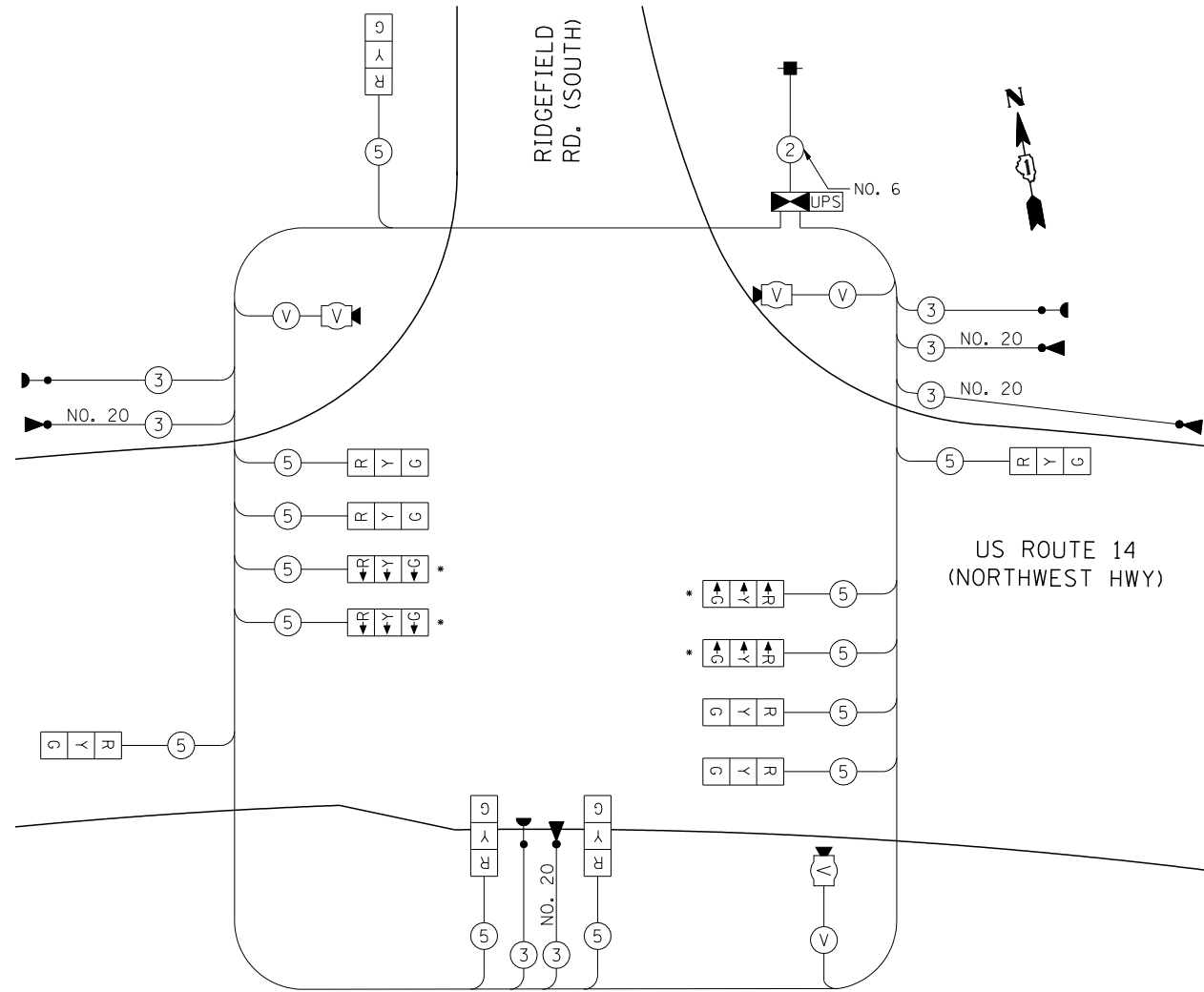


EJM ENGINEERING, INC.
 411 South Wells Street Suite 1000
 Chicago, Illinois 60607



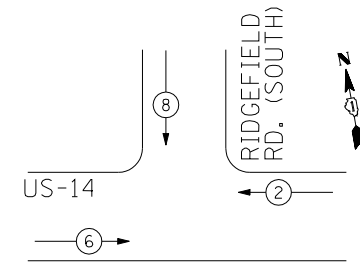
I.D.O.T. TRAFFIC SIGNAL INSTALLATION ELECTRICAL SERVICE REQUIREMENTS					
TYPE	NO. OF LAMPS	WATTAGE		% OPERATIONS	TOTAL WATTAGE
		INCAND.	LED		
SIGNAL (RED)	13	135	17	0.50	110.5
(YELLOW)	13	135	25	0.25	81.25
(GREEN)	13	135	15	0.25	48.75
ARROW		135	12	0.10	
CONTROLLER	1	100	100	1.00	100
VIDEO SYSTEM		150	150		150
ENERGY COSTS TO: TOTAL = 490.5					
ILLINOIS DEPARTMENT OF TRANSPORTATION DIVISION OF HIGHWAY/DISTRICT 1 201 WEST CENTER COURT/SCHAUMBURG, ILLINOIS 60196-1096					
ENERGY SUPPLY: CONTACT: <u>MIKE WIDHALM</u> PHONE: <u>(815) 263-5624</u> COMPANY: <u>COMED</u>					
FILE NAME = ...\\D162517-SHT-TS23.dgn	USER NAME = rswanson	DESIGNED - JW	REVISED -		
		DRAWN - AB	REVISED -		
		PLOT SCALE = 20:1	REVISIED -		
		DATE - 10/15/2013	REVISIED -		



TEMPORARY CABLE PLAN

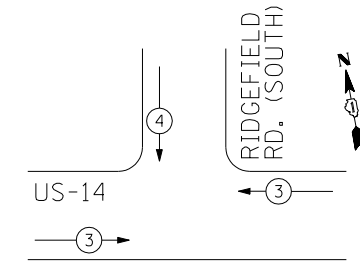
NOTE:
 SIGNAL HEADS DENOTED WITH A * SHALL NOT BE ACTIVATED UNTIL STAGE 3. IF THE CONTRACTOR ELECTS TO INSTALL THEM PRIOR TO STAGE 3, THEY SHALL BE BAGGED AND DEACTIVATED UNTIL STAGE 3.

TEMPORARY CONTROLLER SEQUENCE



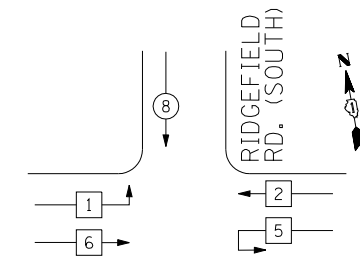
TEMPORARY PHASE DESIGNATION DIAGRAM
STAGES 1A-2A

TEMPORARY EMERGENCY VEHICLE PREEMPTION SEQUENCE
STAGES 1A-2A



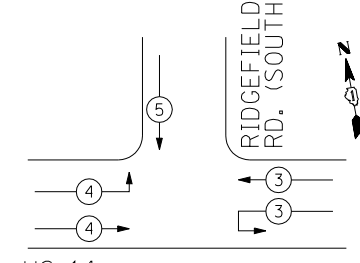
PROPOSED EMERGENCY VEHICLE PREEMPTORS		
EMERGENCY VEHICLE PREEMPTOR	3	4
MOVEMENT	↕	↓

TEMPORARY CONTROLLER SEQUENCE



TEMPORARY PHASE DESIGNATION DIAGRAM
STAGE 3

TEMPORARY EMERGENCY VEHICLE PREEMPTION SEQUENCE
STAGE 3



PROPOSED EMERGENCY VEHICLE PREEMPTORS			
EMERGENCY VEHICLE PREEMPTOR	3	4	5
MOVEMENT	↕	↕	↓

LEGEND
 ○ DUAL ENTRY PHASE
 □ SINGLE ENTRY PHASE
 ◇ OL OVERLAP
 ○ PEDESTRIAN PHASE
 * NUMBER REFERS TO ASSOCIATED PHASE

LEGEND
 ○ DUAL ENTRY PHASE
 □ SINGLE ENTRY PHASE
 ◇ OL OVERLAP
 ○ PEDESTRIAN PHASE
 * NUMBER REFERS TO ASSOCIATED PHASE

STATE OF ILLINOIS
 DEPARTMENT OF TRANSPORTATION

TEMPORARY CABLE PLAN, PHASE DESIGNATION DIAGRAM,
 AND EMERGENCY VEHICLE PREEMPTION SEQUENCE
 US RTE. 14 AND RIDGEFIELD ROAD (SOUTH)

SCALE: NONE SHEET NO. OF SHEETS STA. TO STA.

F.A.P. RTE.	SECTION	COUNTY	TOTAL SHEETS	SHEET NO.
305	27R-3	MCHENRY	431	295
FED. ROAD DIST. NO. 1 ILLINOIS FED. AID PROJECT			CONTRACT NO. 62517	