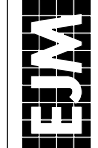


EJM ENGINEERING, INC.
 411 South Wells Street Suite 1000
 Chicago, Illinois 60607



I.D.O.T.
 TRAFFIC SIGNAL INSTALLATION
 ELECTRICAL SERVICE REQUIREMENTS

TYPE	NO. OF LAMPS	WATTAGE		% OPERATIONS	TOTAL WATTAGE
		INCAND.	LED		
SIGNAL (RED)	12	135	17	0.50	102
(YELLOW)	12	135	25	0.25	75
(GREEN)	12	135	15	0.25	45
ARROW	8	12	12	0.10	9.6
PED. SIGNAL	6	90	25	1.00	150
CONTROLLER	1	100	100	1.00	100
VIDEO SYSTEM		150	150		150

ENERGY COSTS TO: TOTAL = 631.6

CITY OF CRYSTAL LAKE
 100 WEST WOODSTOCK ST
 CRYSTAL LAKE, ILLINOIS 60014

ENERGY SUPPLY: CONTACT: MIKE WIDHALM
 PHONE: (815) 263-5624
 COMPANY: COMED

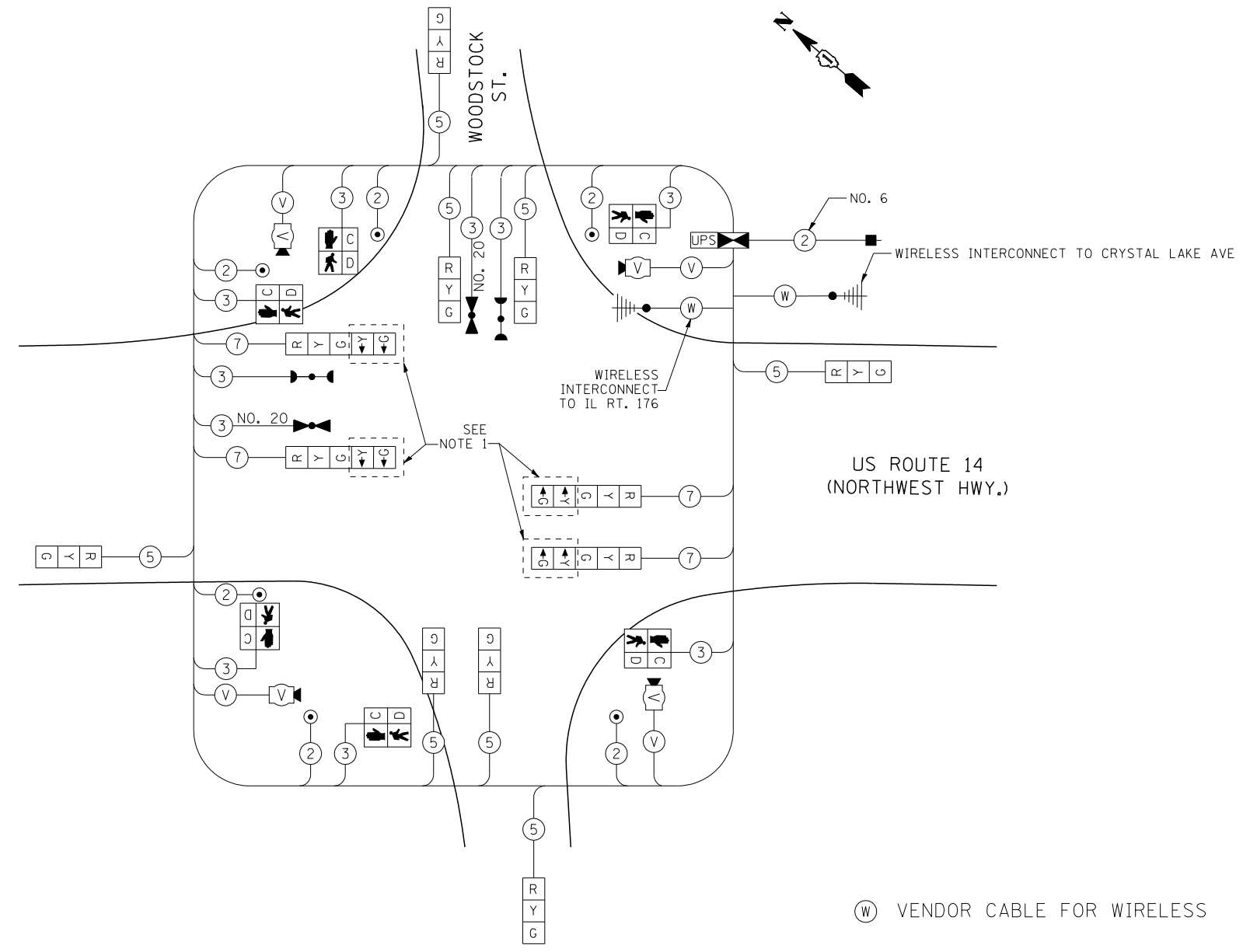
FILE NAME = ...\\D162517-SHT-TS43.dgn	USER NAME = rswanson	DESIGNED - JW	REVISED -
		DRAWN - AB	REVISED -
		CHECKED - BS	REVISED -
		DATE - 10/15/2013	REVISED -

**STATE OF ILLINOIS
 DEPARTMENT OF TRANSPORTATION**

**TEMPORARY CABLE PLAN, PHASE DESIGNATION DIAGRAM, AND
 EMERGENCY VEHICLE PREEMPTION SEQUENCE
 US RTE. 14 AND WOODSTOCK ST.**

SCALE: NONE SHEET NO. OF SHEETS STA. TO STA.

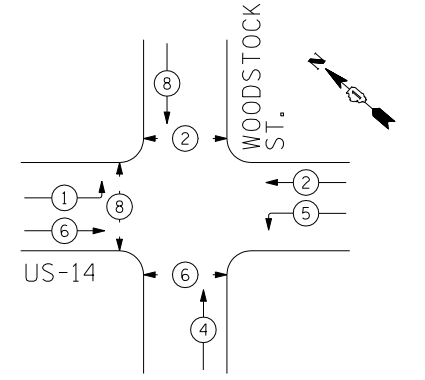
F.A.P. RTE.	SECTION	COUNTY	TOTAL SHEETS	SHEET NO.
305	27R-3	MCHENRY	431	306
FED. ROAD DIST. NO. 1 ILLINOIS FED. AID PROJECT			CONTRACT NO. 62517	



TEMPORARY CABLE PLAN

(W) VENDOR CABLE FOR WIRELESS

TEMPORARY CONTROLLER SEQUENCE

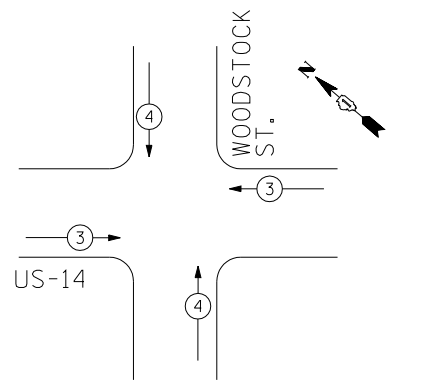


TEMPORARY PHASE DESIGNATION DIAGRAM

- LEGEND
- ◉ DUAL ENTRY PHASE
 - ◻ SINGLE ENTRY PHASE
 - ◊ OL OVERLAP
 - ◉ PEDESTRIAN PHASE
 - * NUMBER REFERS TO ASSOCIATED PHASE

NOTES:
 1. PHASES 1 AND 5 SHALL NOT BE ACTIVATED UNTIL LEFT-TURN LANES HAVE BEEN ESTABLISHED ON US RTE 14 DURING STAGE 1. THE CORRESPONDING LEFT-TURN ARROW SECTIONS SHALL BE BAGGED AND DEACTIVATED WHILE PHASES 1 AND 5 ARE DEACTIVATED.

TEMPORARY EMERGENCY VEHICLE PREEMPTION SEQUENCE



PROPOSED EMERGENCY VEHICLE PREEMPTORS		
EMERGENCY VEHICLE PREEMPTOR	3	4
MOVEMENT	↔	↕