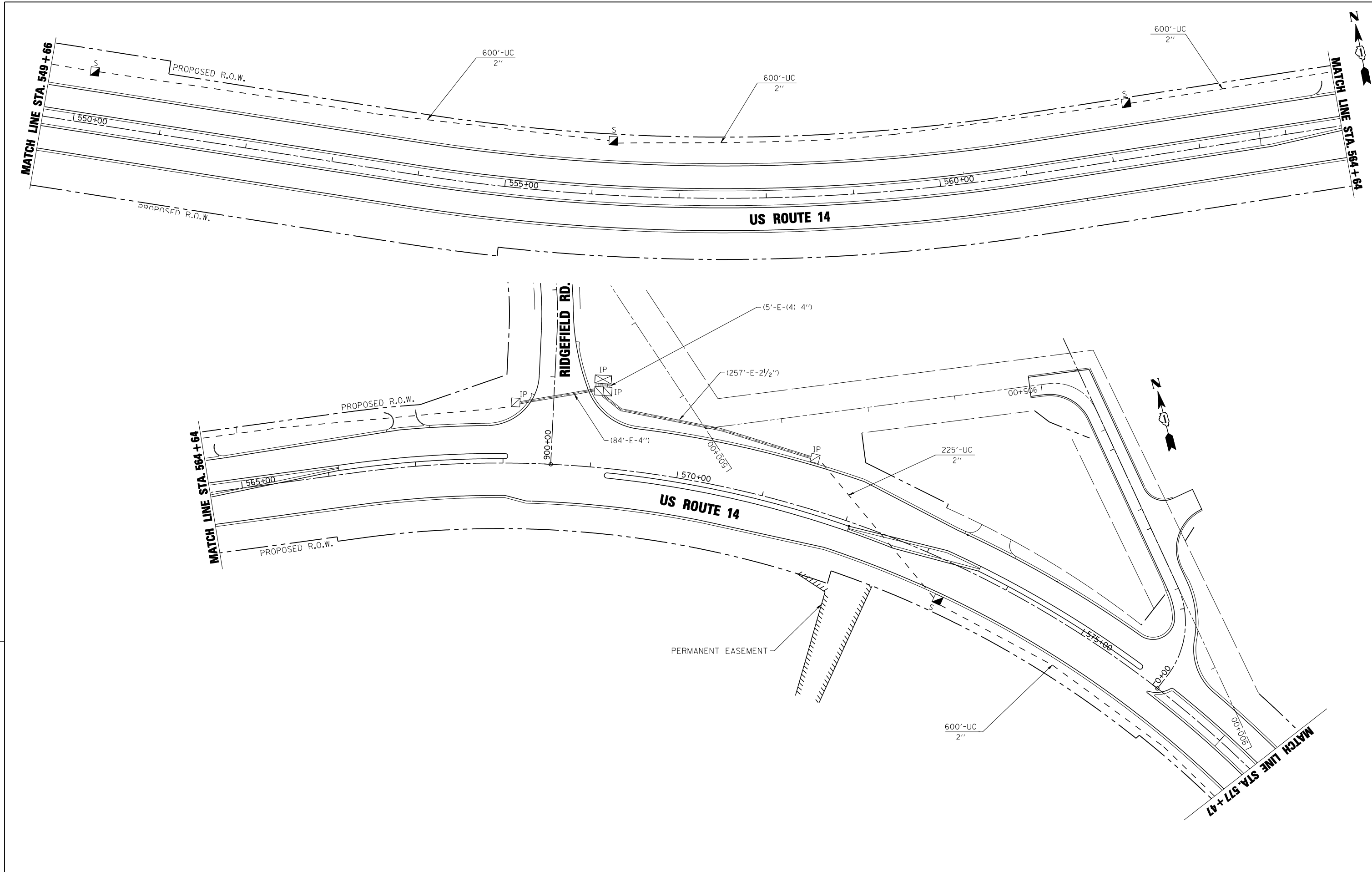


EJM ENGINEERING, INC.
 411 South Wells Street Suite 1000
 Chicago, Illinois 60607



FILE NAME = ...\\D162517-SHT-1C03.dgn
 USER NAME = rswanson
 PLOT SCALE = 20:1
 PLOT DATE = 10/10/2013

DESIGNED - GR
 DRAWN - GR
 CHECKED - RS
 DATE - 10/15/2013

REVISED -
 REVISED -
 REVISED -
 REVISED -

**STATE OF ILLINOIS
 DEPARTMENT OF TRANSPORTATION**

**US RTE. 14
 TRAFFIC SIGNAL INTERCONNECT PLAN**
 SCALE: 50:1 SHEET NO. 3 OF 5 SHEETS STA. 549+66 TO STA. 577+47

F.A.P. RTE.	SECTION	COUNTY	TOTAL SHEETS	SHEET NO.
305	27R-3	MCHENRY	431	316
FED. ROAD DIST. NO. 1 ILLINOIS FED. AID PROJECT			CONTRACT NO. 62517	